

## SERVICE BULLETIN

<b>Reference number:</b>	<b>SB-30-1497</b>	<b>Issued: 22 February, 2021</b>
<b>Subject:</b>	<b>Connector Repair Process for Weak GPS Signal</b>	
<b>Model(s):</b>	<b>DBX (up to VIN: V01738)</b>	
<b>Applicable to:</b>	<b>All Dealers</b>	
<b>Distribute to:</b>	<b>After Sales Manager</b> <b>Executive Manager</b> <b>Service Manager</b> <b>Sales Manager</b>	<b>Warranty Staff</b> <b>Technician(s)</b> <b>Parts Staff</b>

### Reason for this Service Bulletin

If a vehicle is reported to have a weak GPS signal, do the workshop procedure that follows to install harness repair tape and copper tape to the applicable connector locations. This will prevent interference and improve the GPS signal.

To identify the connectors that need to be reworked, refer to the DBX Splice and Connector references that follow in Technical Hub:

### DBX Connector References

<b>C-ref</b>	<b>Description</b>	<b>Splice and Connector View Harness</b>
C23.3	Inline Centre Stack - Facia (FAKRA)	Facia/Centre stack Harness
C39.9	Inline Facia - HVAC Link (FAKRA)	Centre Stack Link Harness
M41.1	Instrument Panel - Display Module (DISP_C )	Centre Stack Link
M42.2	Instrument Cluster - Module (IC)	Facia Harness
M55.11	Head Unit Module (HU)	Centre Stack Link Harness

**Table 1**

### Workshop Procedure

1. Remove the instrument cluster (refer to Workshop Manual procedure 64.02.AA).
2. Remove the infotainment display screen (refer to Workshop Manual procedure 64.02.BB).
3. Remove the head unit (refer to Workshop Manual procedure 64.03.AG).
4. Remove the HVAC ECU (refer to Workshop Manual procedure 55.04.CD).
5. Refer to the list of connectors in Table 1 and do the steps that follow.

**Note: Only disconnect one terminal before you start the next terminal. This will make sure the terminals are installed in the correct position.**

6. Remove the connector from the applicable connector housing (refer to Figure 1).  
**Note: This image shows a connector before any tape is installed.**

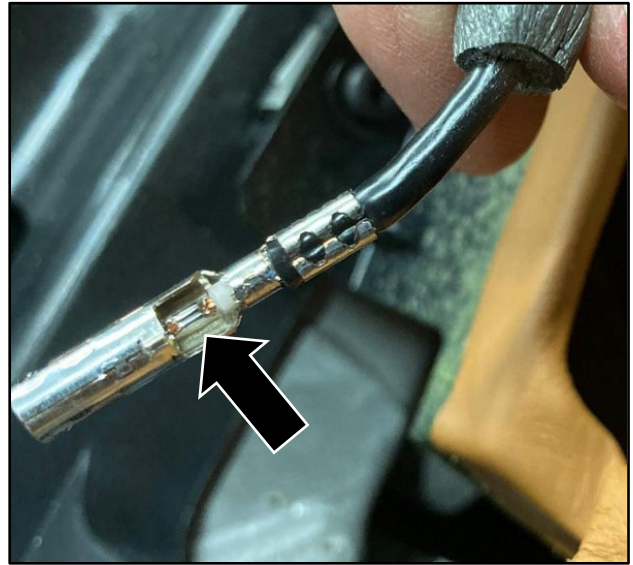


Figure 1

7. Install harness repair tape to the area shown on the applicable cable.  
Care must be taken not to damage the inner core and no gaps are shown (refer to Figure 2).  
**Note: The harness repair tape must be installed before the copper tape.**

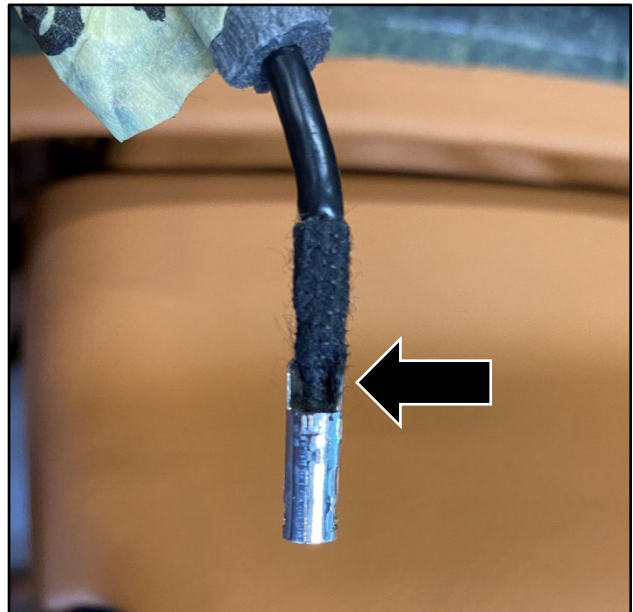


Figure 2

8. Install copper tape to the area shown (refer to Figure 3).

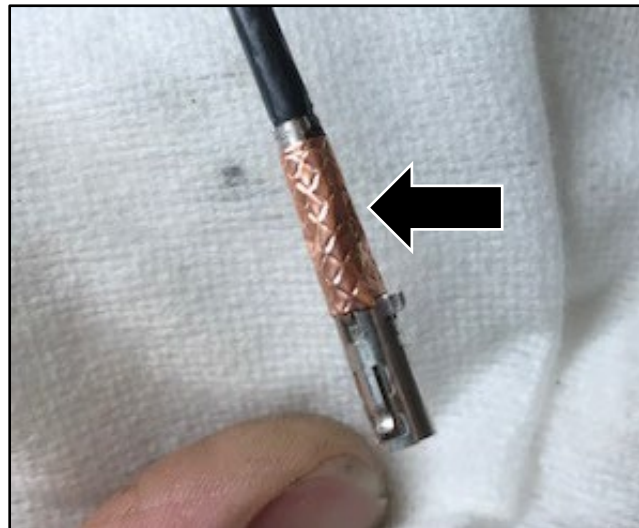


Figure 3

9. Install the connector in the applicable connector housing.

10. Do steps 6 through 9 for each connector listed in Table 1.
11. Install the HVAC ECU (refer to Workshop Manual procedure 55.04.CD).
12. Install the head unit (refer to Workshop Manual procedure 64.03.AG).
13. Install the infotainment display screen (refer to Workshop Manual procedure 64.02.BB).
14. Install the instrument cluster (refer to Workshop Manual procedure 64.02.AA).
15. Do a road test of the vehicle with the navigation system active for a minimum of 30 minutes. This is necessary to calibrate the navigation GPS signal.

### Part Data

Description	Quantity
Harness Tape (roll) (included in wiring harness repair kit or local supply)	1
Copper Tape (roll) (to order start a SpotLight case)	1

### Warranty Data

#### Procedure and Labour Time

Description	Labour Time	ROT Code
Connector Repair Process for Weak GPS Signal	6.7 hours	30.14.AA

If you have any questions related to this document, please refer to the 'Contact Us' link on this webpage or contact your local Dealer or After Sales Manager.

The English version of this Service Bulletin is written in Simplified Technical English to ASD-STE100™.