



SERVICE BULLETIN

Classification: FA21-001	Reference: NTB21-013	Date: February 26, 2021
-----------------------------	-------------------------	----------------------------

PREVENT FRONT AXLE THREAD DAMAGE DURING NUT REMOVAL

APPLIED VEHICLES: 2019-2021 Altima (L34)
2018-2021 Kicks (P15)
2018-2021 LEAF (ZE1)
2021 Rogue (T33)
2020-2021 Sentra (B18)
2020-2021 Versa (N18)

SERVICE INFORMATION

If an Applied Vehicle needs to have a front axle nut removed, for any reason, the staking of the nut into the axle keyway must first be removed. The essential tool (part number # J-52982, Figure 1) required to remove the nut staking, is called out as a “Cape Chisel” in the Electronic Service Manual (ESM), and must be used to prevent thread damage to the axle (see Figure 2 on page 2).

- The Cape Chisel arrived at dealers in December of 2020.
- Damaged threads, due to improper removal of the stake placed in the nut, will not be covered by warranty.

For information on using the Cape Chisel, refer to the Electronic Service Manual (ESM): Section **TRANSMISSION & DRIVELINE > FRONT AXLE > REMOVAL AND INSTALLATION > FRONT DRIVE SHAFT > LH/RH.**



Figure 1

Nissan Bulletins are intended for use by qualified technicians, not 'do-it-yourselfers'. Qualified technicians are properly trained individuals who have the equipment, tools, safety instruction, and know-how to do a job properly and safely. **NOTE:** If you believe that a described condition may apply to a particular vehicle, DO NOT assume that it does. See your Nissan dealer to determine if this applies to your vehicle.

- Figure 2 is an example of threads damaged by improper axle nut removal.

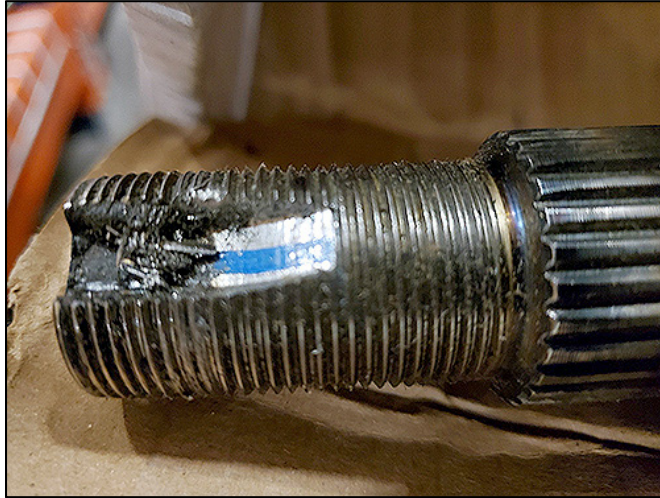


Figure 2

AMENDMENT HISTORY

PUBLISHED DATE	REFERENCE	DESCRIPTION
February 26, 2021	NTB21-013	Original bulletin published