

Classification:

Reference:

 COPYRIGHT© NISSAN NORTH AMERICA, INC.
 Date:

DA19-012b

ITB19-013b

February 3, 2021



AEB WARNING LIGHT BLINKING

This bulletin has been amended. See **AMENDMENT HISTORY** on the last page.
 Please discard previous versions of this bulletin.

APPLIED VEHICLES: 2015-2021 Q50 (V37) 2019-2021 QX50 (J55)
 2015-2018 Q50 Hybrid (HV37) 2015-2020 QX60 (L50)
 2017-2021 Q60 (CV37) 2015-2019 QX60 Hybrid (L50H)
 2015-2019 Q70 (Y51) 2015-2021 QX80 (Z62)
 2015-2018 Q70 Hybrid (HY51)

APPLIED SYSTEMS: Vehicles equipped with a lane camera (see Figure 1)

SERVICE INFORMATION

If the AEB warning light  or  is blinking (but not illuminated steadily) or the customer states it is blinking, and there are no related DTCs, inspect the windshield.

A blinking AEB warning light may occur under the following conditions:

- When contamination or foreign material adhere to the lane camera viewing window on the windshield
- When driving while it is snowing or when frost forms on the lane camera viewing window on the windshield
- When the lane camera viewing window on the windshield is temporarily fogged up

NOTE:

- If DTCs are present in any of the following related systems:

- Laser/Radar,
- ICC/ADAS, or
- Lane Camera,

Refer to the related Electronic Service Manual (ESM) for diagnosis.

- Refer to the following pages for further information.

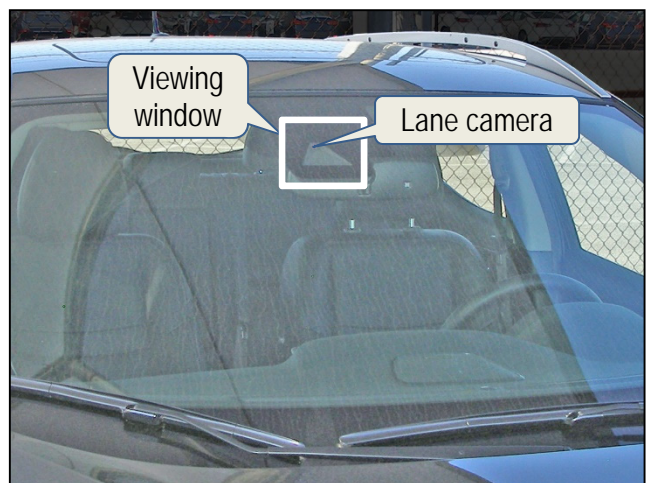
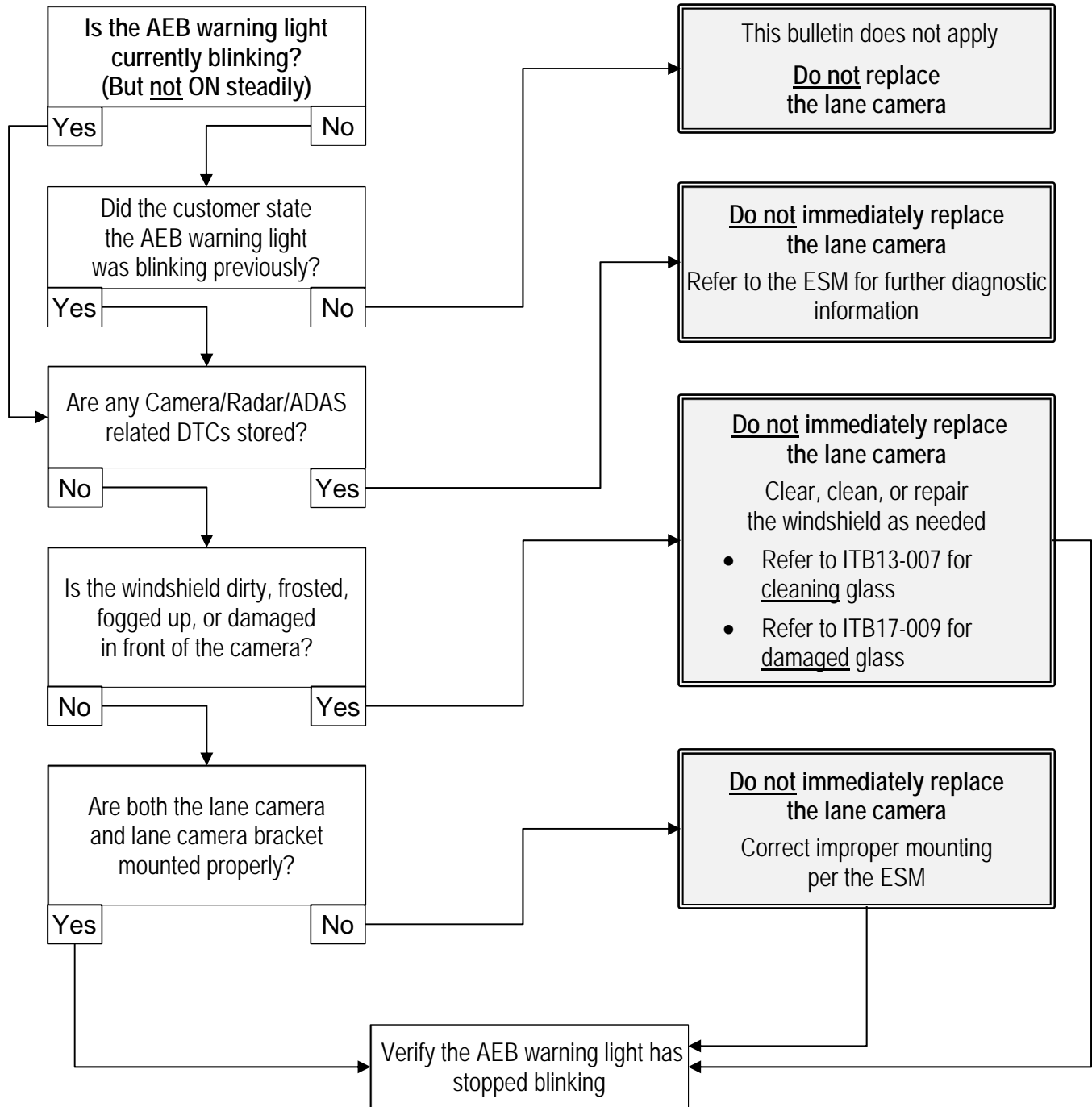


Figure 1

Infiniti Bulletins are intended for use by qualified technicians, not 'do-it-yourselfers'. Qualified technicians are properly trained individuals who have the equipment, tools, safety instruction, and know-how to do a job properly and safely. **NOTE:** If you believe that a described condition may apply to a particular vehicle, DO NOT assume that it does. See your Infiniti retailer to determine if this applies to your vehicle.

FLOW CHART



Inform the customer the following conditions may cause the AEB warning light to blink:

- When contamination or foreign material adhere to the lane camera viewing window on the windshield
- When driving while it is snowing or when frost forms on the lane camera viewing window on the windshield
- When the lane camera viewing window on the windshield is temporarily fogged up

Explain to the customer the difference between contamination detection and a malfunction.

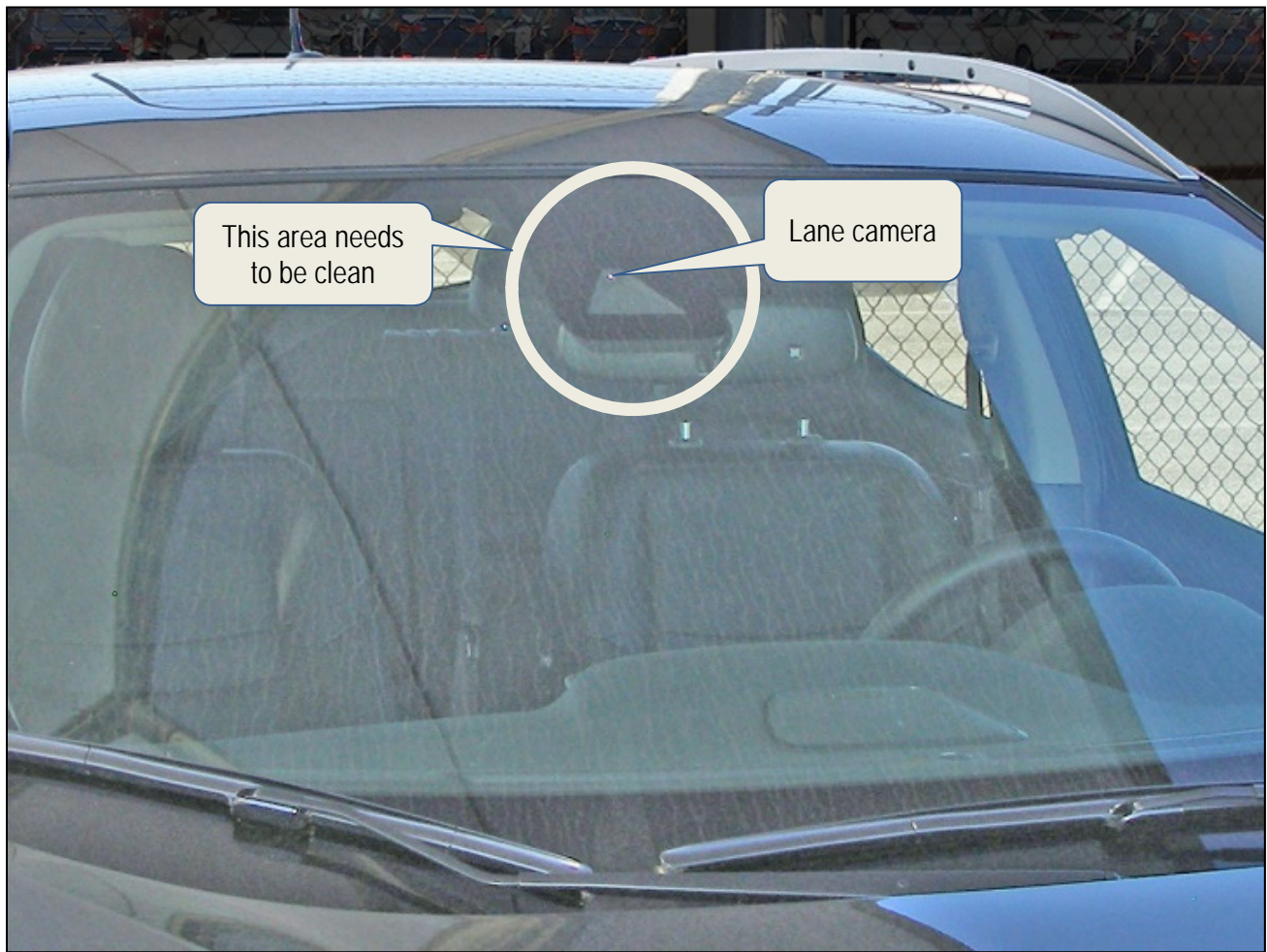


Figure 2

AMENDMENT HISTORY

PUBLISHED DATE	REFERENCE	DESCRIPTION
May 22, 2019	ITB19-013	Original bulletin published
November 5, 2020	ITB19-013a	APPLIED VEHICLES updated
February 3, 2021	ITB19-013b	Classification number updated