



Subject: DOOR SASH MOLDING INTERFERENCE	Service Alert No.: SA-018/21
	Last Issued: 02/25/2021

BULLETIN NOTES

This service alert supersedes the previously issued service alert listed below. The changes are noted in Red text.

Previous Service Alert	Date(s) Issued:
SA-056/20	07/10/20

APPLICABLE MODEL(S)/VINS

2019-2021 Mazda3 4-door SD

DESCRIPTION

Some customers or technicians (during PDI) may have concerns with the front doors sticking (especially on hot days) and/or poor appearance, fitment, alignment or gaps with the front and rear door sash molding. These concerns may be related to the door sash molding interference between the front and rear doors.

Follow the repair procedure to correct this concern.

REPAIR PROCEDURE

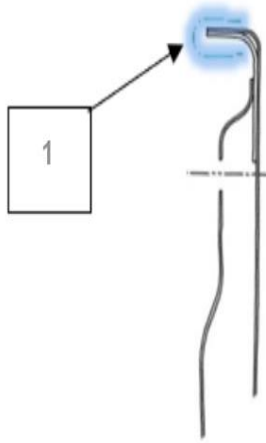
1. If necessary, remove any adhesive, tape or grease from the vehicle.
2. Remove the REAR DOOR GARNISH and replace it with a new one according to the the instructions on MGSS (REAR DOOR GARNISH REMOVAL/INSTALLATION)
NOTE: If the vehicle is equipped with Mazda Genuine Accessory Side Window Deflectors, DO NOT attempt repairs at this time.
3. Remove the front door garnish according to the the instructions on MGSS (FRONT DOOR GARNISH REMOVAL/INSTALLATION)
4. Remove the front door glass run-channel according to the the instructions on MGSS (FRONT DOOR GLASS RUN-CHANNEL REMOVAL/INSTALLATION)

CONSUMER NOTICE: The information and instructions in this bulletin are intended for use by skilled technicians. Mazda technicians utilize the proper tools/equipment and take training to correctly and safely maintain Mazda vehicles. These instructions should not be performed by "do-it-yourselfers." Customers should not assume this bulletin applies to their vehicle or that their vehicle will develop the described concern. To determine if the information applies, customers should contact their nearest authorized Mazda dealership. Mazda North American Operations reserves the right to alter the specifications and contents of this bulletin without obligation or advance notice. All rights reserved. No part of this bulletin may be reproduced in any form or by any means, electronic or mechanical---including photocopying and recording and the use of any kind of information storage and retrieval system ---without permission in writing.

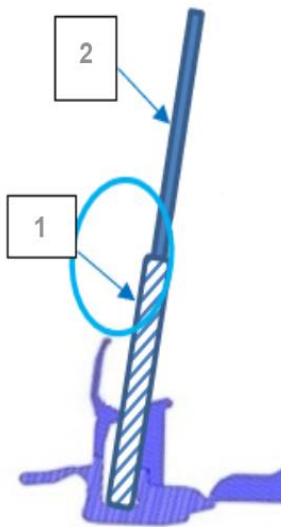
NOTE: Remove any existing tape or adhesive from the front door glass run-channel.

5. Install a new front door glass run-channel.

a. Clean and degrease the new front door glass run-channel top and bottom mounting surfaces on the door side, a little wider than the adhesive application (about 200mm or more from the door edge) as shown (1).



b. To degrease the glass run-channel side, use a shop rag (1) soaked in degreaser wrapped around a screwdriver (2).



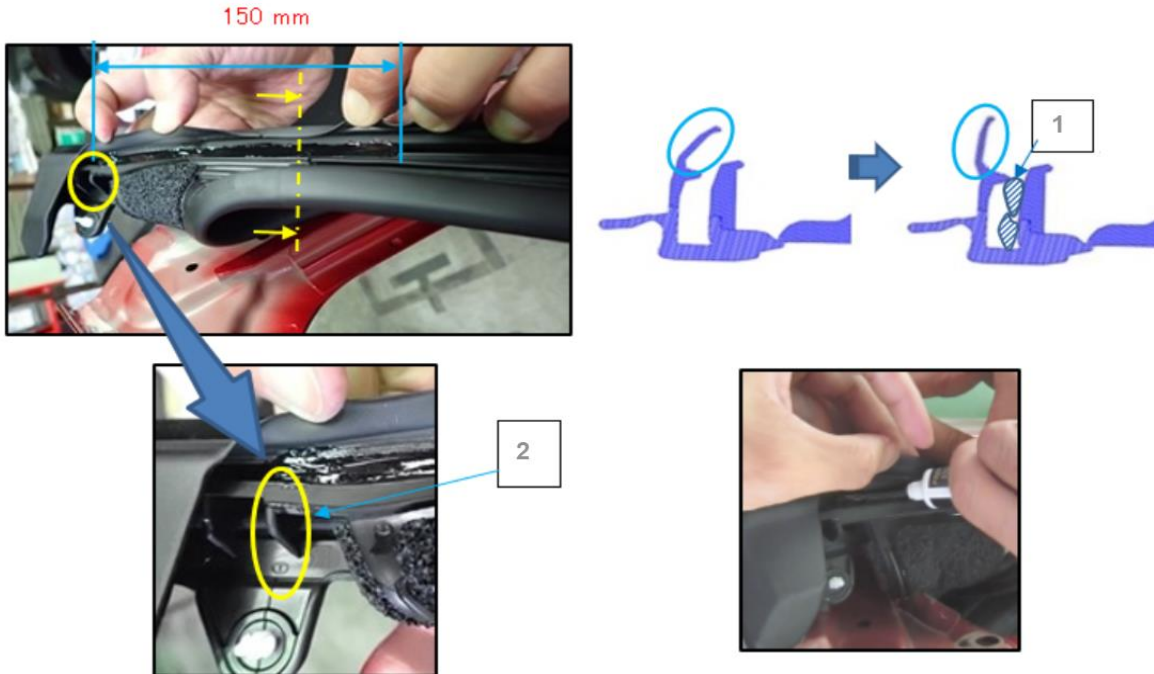
Section view of GLASS RUN-CHANNEL

CONSUMER NOTICE: The information and instructions in this bulletin are intended for use by skilled technicians. Mazda technicians utilize the proper tools/equipment and take training to correctly and safely maintain Mazda vehicles. These instructions should not be performed by "do-it-yourselfers." Customers should not assume this bulletin applies to their vehicle or that their vehicle will develop the described concern. To determine if the information applies, customers should contact their nearest authorized Mazda dealership. Mazda North American Operations reserves the right to alter the specifications and contents of this bulletin without obligation or advance notice. All rights reserved. No part of this bulletin may be reproduced in any form or by any means, electronic or mechanical---including photocopying and recording and the use of any kind of information storage and retrieval system ---without permission in writing.

c. Apply adhesive to the front door glass run-channel (2 people recommended).

NOTE:

- Apply the adhesive with care so that the adhesive does not adhere to the lip of the run-channel. Apply twice to the same route.
- If the adhesive adheres to any part other than the application area (lip, etc.), wipe it off immediately.
- Spread the lip to make it easier to apply the adhesive (1).
- Use the run channel rib as a guide, starting the application at the position shown (2).
- Estimated usage is 4 to 5g.



d. Attach the glass run channel from the corner of the door on the B pillar side. Refer to the instructions on MGSS (FRONT DOOR GLASS RUN-CHANNEL REMOVAL/INSTALLATION)

6. Install a new front door garnish according to the instruction on MGSS (FRONT DOOR GARNISH REMOVAL/INSTALLATION)

7. Install new side window deflectors (installed vehicles only).

8. After closing the door glass, let the vehicle sit for 24 hours and then check for any abnormality in the mounting condition.

CONSUMER NOTICE: The information and instructions in this bulletin are intended for use by skilled technicians. Mazda technicians utilize the proper tools/equipment and take training to correctly and safely maintain Mazda vehicles. These instructions should not be performed by "do-it-yourselfers." Customers should not assume this bulletin applies to their vehicle or that their vehicle will develop the described concern. To determine if the information applies, customers should contact their nearest authorized Mazda dealership. Mazda North American Operations reserves the right to alter the specifications and contents of this bulletin without obligation or advance notice. All rights reserved. No part of this bulletin may be reproduced in any form or by any means, electronic or mechanical---including photocopying and recording and the use of any kind of information storage and retrieval system ---without permission in writing.

PARTS INFORMATION

Use the GEPC with the VIN to look up parts to ensure they are correct for the vehicle.

Required parts are:

- Front door glass run-channel
- Front door garnish
- 3M Black Super Weatherstrip and Gasket Adhesive (locally sourced)
- "R" parts such as clips
- Any parts that were damaged by the concern

CONSUMER NOTICE: The information and instructions in this bulletin are intended for use by skilled technicians. Mazda technicians utilize the proper tools/equipment and take training to correctly and safely maintain Mazda vehicles. These instructions should not be performed by "do-it-yourselfers." Customers should not assume this bulletin applies to their vehicle or that their vehicle will develop the described concern. To determine if the information applies, customers should contact their nearest authorized Mazda dealership. Mazda North American Operations reserves the right to alter the specifications and contents of this bulletin without obligation or advance notice. All rights reserved. No part of this bulletin may be reproduced in any form or by any means, electronic or mechanical---including photocopying and recording and the use of any kind of information storage and retrieval system ---without permission in writing.