



GROUP
ENG

MODEL
2020MY
Multiple Models
(see table on p. 7)

NUMBER
213 (Rev 1, 02/03/2021)

DATE
January 2020

TECHNICAL SERVICE BULLETIN

SUBJECT:

**DATA COLLECTION: EXTRACT CALIFORNIA
EMISSIONS DATA FROM ECU (DC20)**

* NOTICE

This bulletin has been revised to include additional information. New/revised sections of this bulletin are indicated by a black bar in the margin area.

This bulletin provides information related to extracting “in use performance tracking” emissions data from the Engine Control Unit (ECU) of certain vehicles sold in California. The California Air Resources Board (CARB) requires the emissions data from vehicles with a minimum of 3,000 accumulated miles without reprogramming or resetting. To facilitate collection of this data at the dealer level, KDS screenshots will allow the capture of relevant parameters. Note that a “**Web Based**” KDS IUMPR Data Collection procedure is outlined. Reference TSB [SST064](#).

* NOTICE

If the vehicle meets the criteria below, California dealers must perform this data collection on vehicles whenever an affected vehicle is in the shop for any maintenance or repair.

This data collection does not apply to vehicles or dealers operating outside of California.

Once sufficient data is collected, individual line items per model may be closed without updates to the TSB. Once a line item is closed on DCS, no further data collection is required. Data collections initiated after a line item is closed are subject to chargeback.

For vehicles listed on DCS as requiring this procedure, follow the instructions in this bulletin after confirming that the following criteria are met:

- WebDCS shows this as an open Data Collection code DC20XXXX (depending on model; see table on page 8) for the vehicle.
- Vehicle has more than 3,000 accumulated miles on its odometer.
- Vehicle repair history does not show battery replacement/disconnection/reset or an ECU update done in the last 3,000 miles, because IUMPR (In Use Monitor Performance Ratio) data would have been cleared by such an event.
- Vehicle does not have the check engine light on.

Printed TSB copy is for reference only; information may be updated at any time.
Always refer to KGIS for the latest information.

Circulate To: General Manager Service Manager Parts Manager
 Service Advisors Technicians Body Shop Manager Fleet Repair

SUBJECT: DATA COLLECTION: EXTRACT CALIFORNIA EMISSIONS DATA FROM ECU (DC20)

*** NOTICE**

If a vehicle meets the above criteria, collect data prior to any other campaign or repair-related activities.

*** IMPORTANT**

A number of received data submittals are incomplete and are therefore not usable. Examples: Invalid R/O number, incomplete VECI label Group number, no mileage reported, etc. In order to ensure 100% complete and valid data submittals as well as to ensure related warranty claims will be processed without delay and not be subject to chargebacks, carefully review and adhere to the updated process steps below.

KDS Service Procedure:

*** NOTICE**

Starting on May 31, 2019 with the release of KDS Internet Update M-N-K-01-00-0135, the new IUMPR function will be loaded onto the KDS. Once installed, all IUMPR data will be electronically transmitted by KDS when connected to internet.

1. Open the engine compartment and locate the Vehicle Emission Control Information label located on the underside of the hood.

Record the 11-digit "Group" number (A) for later entry into screen.

	KIA MOTORS CORPORATION VEHICLE EMISSION CONTROL INFORMATION	
Conforms to regulations :	20XX MY	
U.S.EPA : T3B125LDV	OBD : CA II	Fuel : Gasoline
California : LEV III ULEV125PC	CA II	Fuel : Gasoline
No adjustments needed.	HO2S/HO2S/WU-TWC/TC/CAC	
Group : JKMXV02.04X6	AA22	32431-2CCA1
Evap. : JKMXR0140DYE		

2. Connect the VCI-II to the OBD-II connector, located under the driver's side of the instrument panel.



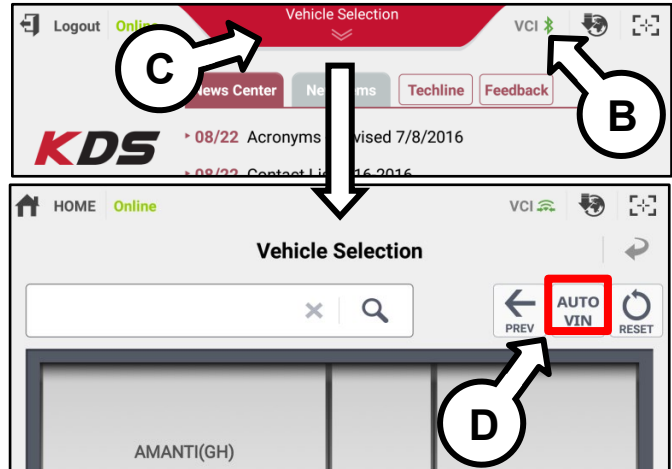
3. With the ignition ON, turn ON the KDS tablet. Select **KDS** from the home screen.



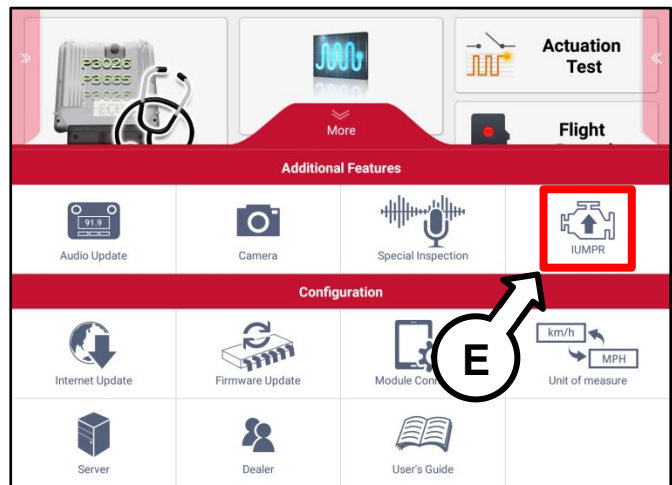
SUBJECT:

DATA COLLECTION: EXTRACT CALIFORNIA EMISSIONS DATA FROM ECU (DC20)

- Confirm communication with VCI (B) and then configure the vehicle (C) using the **AUTO VIN** (D) feature.

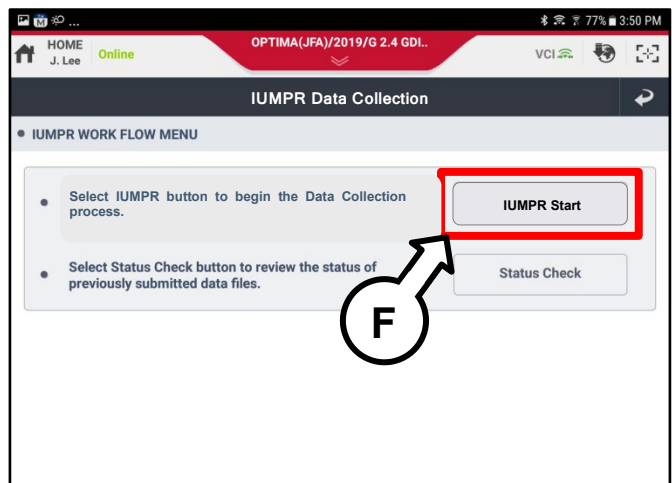


- Select the **IUMPR** function (E) from the **More** section after pulling it up from the bottom of the screen.



- Select **IUMPR Start** (F).

*** NOTICE**
 Make sure KDS is connected to the internet. It must be able to confirm the vehicle has an open DC 20 Data Collection.



SUBJECT:

DATA COLLECTION: EXTRACT CALIFORNIA EMISSIONS DATA FROM ECU (DC20)

- The IUMPR Data Collection screen should open in the event the vehicle has an open DC 20 data collection.

* NOTICE

You may receive an error screen if vehicle does not have an open DC 20 Data Collection, or if any of the other conditions specified on page 1 does not apply.

- Enter the applicable information (G) accurately into each field.

* NOTICE

Test Group is found on the engine underhood emission label. Refer to the step 1, on page 2.

- The following screen confirms your entered information and the first page of collected IUMPR data.

* NOTICE

Confirm the correct VIN (H) was successfully captured by the initial KDS Auto VIN.

Sensor Name(33)	Module ID	Value	Unit
OBD Monitoring Conditions Encountered Counts	E8	7	Count
Ignition Counter	E8	380	Count
Catalyst Monitor Completion Counts-Bank1	E8	4	Count
Catalyst Monitor Conditions Encountered Counts-Bank1	E8	7	Count
Catalyst Monitor Completion Counts-Bank2	E8	0	Count

SUBJECT:

DATA COLLECTION: EXTRACT CALIFORNIA EMISSIONS DATA FROM ECU (DC20)

10. Scroll the screen down to the second page until the **Send (I)** button appears.

Select **Send (I)** to transmit collected data to Kia's server.

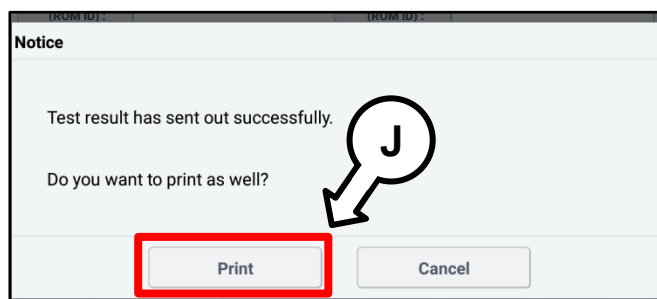
Sensor Name(33)	Module ID	Value	Unit
Air Fuel Ratio Imbalance Monitor Completion Counts Bank 2	E8	0	Count
Air Fuel Ratio Imbalance Monitor Conditions Encountered Counts Bank 2	E8	0	Count
Particulate Filter Monitor Completion Counts Bank 1	E8	0	Count
Particulate Filter Monitor Conditions Encountered Counts Bank 1	E8	0	Count
Particulate Filter Monitor Completion Counts Bank 2	E8	0	Count
Particulate Filter Monitor Conditions Encountered Counts Bank 2	E8	0	Count
Certification Test Group/Engine Family Number	E8	KKMXV02.4DH3	-
Ignition Counter (Recent)	E8	0	Count
Total Distance Traveled (Recent)	E8	0	km
Positive Kinetic Energy (Recent)	E8	0	km/h2
Total Propulsion System Active Time (Recent)	E8	0	Sec

I

Previous
Send

11. This screen will confirm KDS has successfully electronically transmitted the vehicle's IUMPR data to Kia's server.

Select **Print (J)** to get a record of the IUMPR data collection to attach to the repair order as evidence of collection.



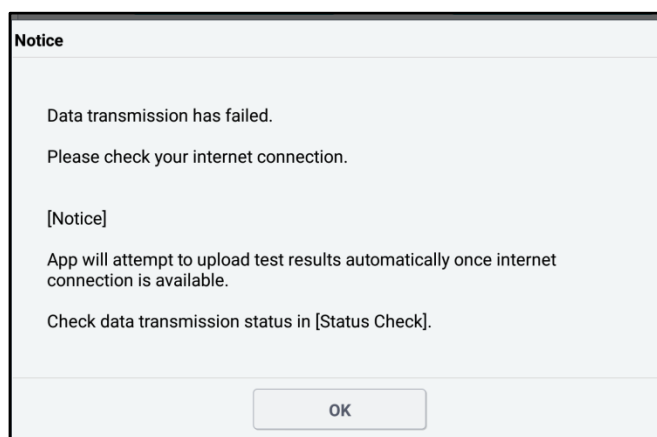
* NOTICE

Submission of screenshots by KDS Feedback is no longer required for claim payment. The data will be transmitted electronically by KDS.

12. If the event of an unsuccessful transmission of data, the following error screen may occur:

a) Refer to **Checking IUMPR Data Transmission Status** on page 6 to confirm if status shows **pending** meaning that the data has been captured by KDS and will automatically be sent when internet is later restored.

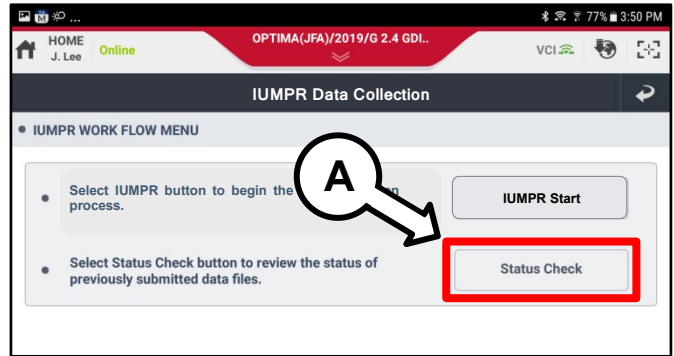
b) Should **Checking IUMPR Data Transmission Status** not show a status of **pending** or **sent** for the applicable VIN, then the above collection procedure steps 1-11 will need to be repeated.



SUBJECT: DATA COLLECTION: EXTRACT CALIFORNIA EMISSIONS DATA FROM ECU (DC20)

Checking IUMPR Data Transmission Status:

1. Select **Status Check (A)** from the **DC Data Collection** screen.

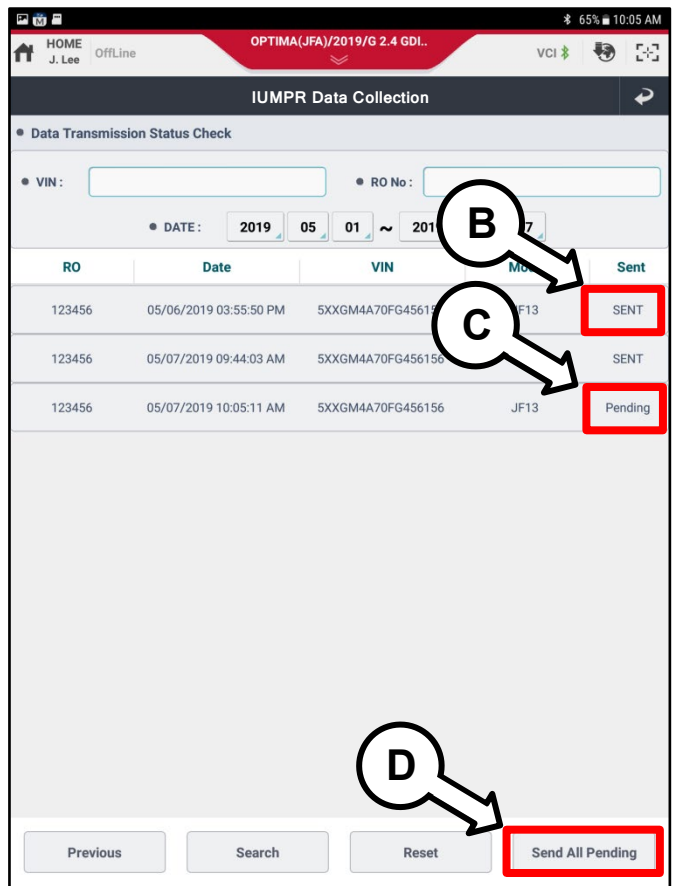


2. The **Data Transmission Status Check** screen will display the following:

(B) **Sent** indicates IUMPR data has been sent successfully to Kia’s server.

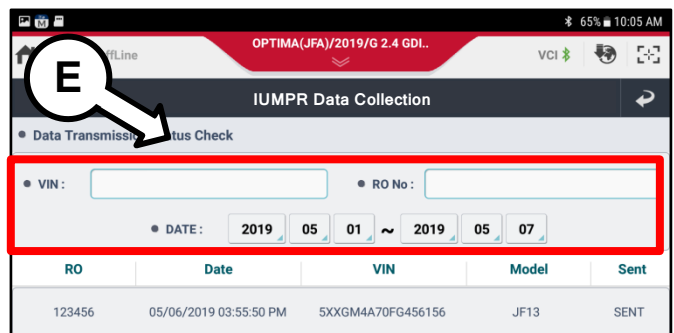
(C) **Pending** indicates IUMPR data was collected and saved in KDS, but remains to be sent automatically to the Kia server once an internet connection is later established.

*** NOTICE**
 You may try **Send All Pending** if you have just connected to the internet, otherwise it will be sent automatically once internet is restored. You can confirm transmission status later.



3. A particular VIN or R/O number or Date range (E) can be entered at the top search section to find past collected data sent from the KDS.

*** NOTICE**
 To display past collected data, select any case on the list to view it.



SUBJECT:

DATA COLLECTION: EXTRACT CALIFORNIA EMISSIONS DATA FROM ECU (DC20)

AFFECTED VEHICLE RANGE:

Model	Production Date Range
Rio (SC) 1.6L	2020MY (Sold in California only)
Sportage (QL) 2.0L-T, 2.4L	
Sedona (YP) 3.3L	
Sorento (UM) 2.4L, 3.3L	
K900 (RJ) 3.3L-T	
Optima (JF/JFa) 1.6L-T, 2.0L-T, 2.4L, Optima Hybrid (JF HEV) 2.0L, Optima Plug-in Hybrid (JF PHEV) 2.0L	
Forte (BDm) 1.6L-T, 2.0L	
Soul (SK3) 1.6L-T, 2.0L	
Cadenza (YG) 3.3L	
Niro (DE P/HEV) 1.6L	
Stinger (CK) 2.0L-T, 3.3L-T	
Telluride (ON) 3.8L	

WARRANTY INFORMATION:

N Code: N99 C Code: C99

Campaign ID	Claim Type	Causal P/N	Qty.	Repair Description	Labor Op Code	Op Time	Replacement P/N	Qty.
DC20BD1	V	100CA EM999	0	Forte (BD) 2.0 SULEV	20BD20S1	0.4 M/H	N/A	0
DC20BD2				Forte (BD) 2.0 ULEV	20BD20U1			
DC20BD3				Forte (BD) 1.6-T ULEV	20BD16U1			
DC20CK1				Stinger (CK) 2.0-T ULEV	20CK20U1			
DC20CK2				Stinger (CK) 3.3-T ULEV	20CK33U1			
DC20DEH1				Niro (DE) HEV 1.6 ULEV	20DE16U1			
DC20DEP1				Niro (DE) PHEV 1.6 ULEV	20DE16U2			
DC20JF1				Optima (JFa) 2.4 SULEV	20JF24S1			
DC20JF2				Optima (JFa) 2.4 ULEV	20JF24U1			
DC20JF3				Optima (JF) 1.6-T ULEV	20JF16U1			
DC20JF4				Optima (JF) HEV 2.0 ULEV	20JF20U1			
DC20JF5				Optima (JF) PHEV 2.0 ULEV	20JF20U2			
DC20JF6				Optima (JFa) 2.0-T ULEV	20JF20U3			
DC20ON1				Telluride (ON) 3.8 ULEV	20ON38U1			
DC20QL1				Sportage (QL) 2.4 SULEV	20QL24S1			
DC20QL2				Sportage (QL) 2.4 ULEV	20QL24U1			
DC20QL3				Sportage (QL) 2.0-T ULEV	20QL20U1			
DC20RJ1				K900 (RJ) 3.3-T ULEV	20RJ33U1			
DC20SC1				Rio (SC) 1.6 ULEV	20SC16U1			
DC20SK31				Soul (SK3) 2.0 SULEV	20SK20S1			
DC20SK34				Soul (SK3) 2.0 ULEV	20SK20U3			
DC20SK33				Soul (SK3) 1.6-T ULEV	20SK16U1			
DC20UM1				Sorento (UMa) 2.4 ULEV	20UM24U1			
DC20UM2				Sorento (UMa) 3.3 ULEV	20UM33U1			
DC20YG1				Cadenza (YG) 3.3 ULEV	20YG33U1			
DC20YP1				Sedona (YP) 3.3 ULEV	20YP33U1			