

**Symptom in Vehicle Interior - Water Noise (Sloshing) During Acceleration/Braking or Water Leaking Into Rear Footwell (224/20)**

Model Line: **Taycan (Y1A)**

Model Year: **As of 2020 up to 2021**

Concerns: **Water drains on the high-voltage battery protective plate**

Symptom: Water noise audible in the underbody area during acceleration and braking.  
In addition, water leaking into rear-seat footwells.

Cause: Dirt particles can cause the water drains on the high-voltage battery protective plate to become blocked and result in water not draining away.

Action required: Remove water drains and remove the integral membranes.



**Information**

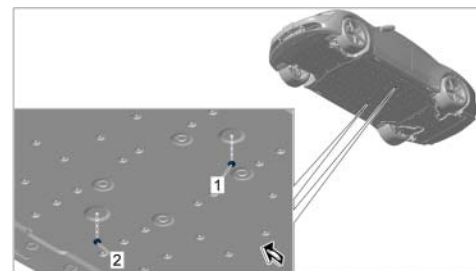
Optimized water drains are still being developed at present and are not yet available.  
Replacing the water drains will therefore not correct the problem.

**Preparatory work**

Work Procedure: 1 Raise the vehicle, see ⇒ *Workshop Manual '4X00IN Lifting the vehicle'*.

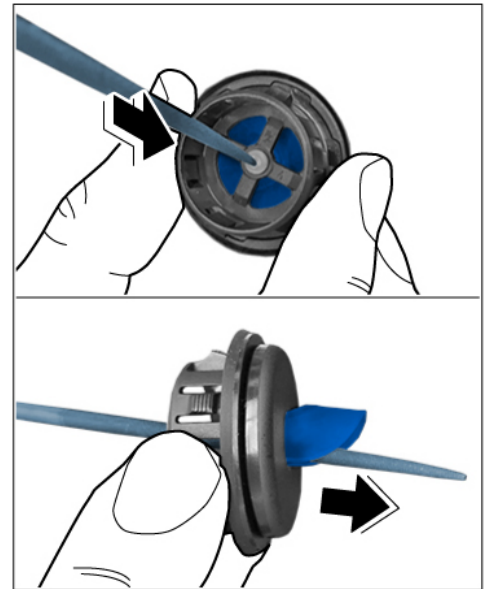
**Reworking water drains**

Work Procedure: 1 Remove both water drains ⇒ *Water drain on protective plate -1-* and ⇒ *Water drain on protective plate -2-* from the high-voltage battery protective plate using a suitable tool.



*Water drain on protective plate*

2 Press integral ⇒ *Water drain -top-* membrane out of the water drain from the inside out using a suitable tool.



*Water drain*

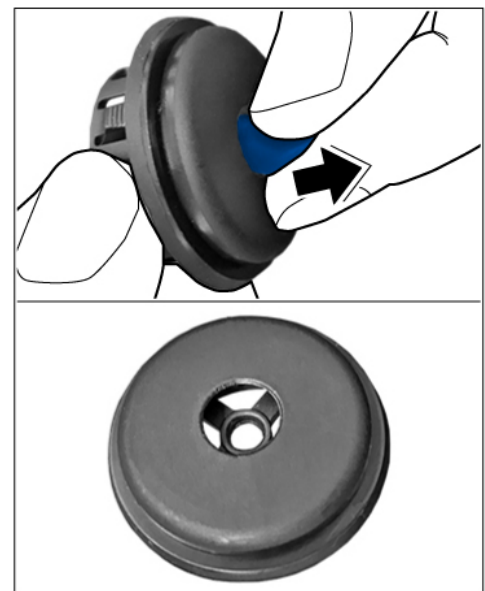
- 3 Remove integral membrane from the water drain ⇒ *Water drain -bottom-*.



#### Information

Complete Steps 2 and 3 on **both** water drains.

- 4 Re-install water drain **without** membrane in the high-voltage battery protective plate.



*Water drain without membrane*

## Concluding work

Work Procedure: 1 Lower the vehicle, see ⇒ *Workshop Manual '4X00IN Lifting the vehicle'*.

## Invoicing

Invoicing: For documentation and warranty invoicing, enter the labor operations and PQIS coding specified below in the warranty claim:

APOS	Labor operation	I No.
51934900	Reworking center cover	

PQIS coding:

Location (FES5)	51930	Center cover
Damage type (SA4)	1221	missing part

References: ⇒ *Workshop Manual '4X00IN Lifting the vehicle'*

**Important Notice:** Technical Bulletins issued by Porsche Cars North America, Inc. are intended only for use by professional automotive technicians who have attended Porsche service training courses. They are written to inform those technicians of conditions that may occur on some Porsche vehicles, or to provide information that could assist in the proper servicing of a vehicle. Porsche special tools may be necessary in order to perform certain operations identified in these bulletins. Use of tools and procedures other than those Porsche recommends in these bulletins may be detrimental to the safe operation of your vehicle, and may endanger the people working on it. Properly trained Porsche technicians have the equipment, tools, safety instructions, and know-how to do the job properly and safely. Part numbers listed in these bulletins are for reference only. The work procedures updated electronically in the Porsche PIWIS diagnostic and testing device take precedence and, in the event of a discrepancy, the work procedures in the PIWIS Tester are the ones that must be followed.

© 2021 Porsche Cars North America, Inc.