

FLA COE
FLB COE
FLD Conventional
Business Class
FLC 112 Conventional

Century Class Conventional
Argosy
Cargo
Columbia
122SD and Coronado

Business Class M2
Cascadia
108SD/114SD
> New Cascadia

**Freightliner
Service Bulletin**

General Information

New Cascadia vehicles built from September 9, 2019 through October 1, 2020, with the tire pressure monitoring system (TPMS) modules communicating on the J1939 500K baud rate (part numbers BW K138367 or BW K165667) and stamped with the TPMS housing date codes from February 2019 to June 2019, may experience water intrusion into the TPMS module.

Water entering the TPMS module can affect the internal components resulting in the following symptoms:

- TPMS does not communicate.
- TPMS disrupting the J1939 500K communication.

If the vehicle has either of the listed symptoms and the TPMS module is stamped with a date code of February 2019 to June 2019, it is recommended that the module be replaced. Ensure the connection at the module is not damaged; replace any damaged parts.

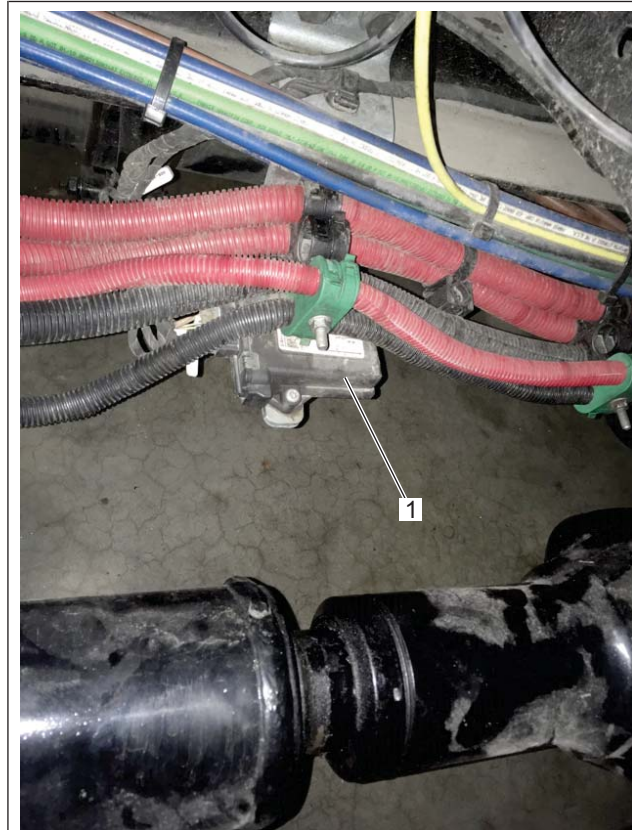
Replacement of the TPMS Module

1. Park the vehicle on a level surface, shut down the engine, and set the parking brakes. Chock the tires.
2. Locate the TPMS module mounted below the left frame rail as shown in [Fig. 1](#).

FLA COE
FLB COE
FLD Conventional
Business Class
FLC 112 Conventional

Century Class Conventional
Argosy
Cargo
Columbia
122SD and Coronado

Business Class M2
Cascadia
108SD/114SD
> New Cascadia



01/15/2021

f547451

1. TPMS Module

Fig. 1, Location of the TPMS Module

3. Disconnect the wiring harness connector from the TPMS module. See [Fig. 2](#).

FLA COE
FLB COE
FLD Conventional
Business Class
FLC 112 Conventional

Century Class Conventional
Argosy
Cargo
Columbia
122SD and Coronado

Business Class M2
Cascadia
108SD/114SD
> New Cascadia

Freightliner
Service Bulletin

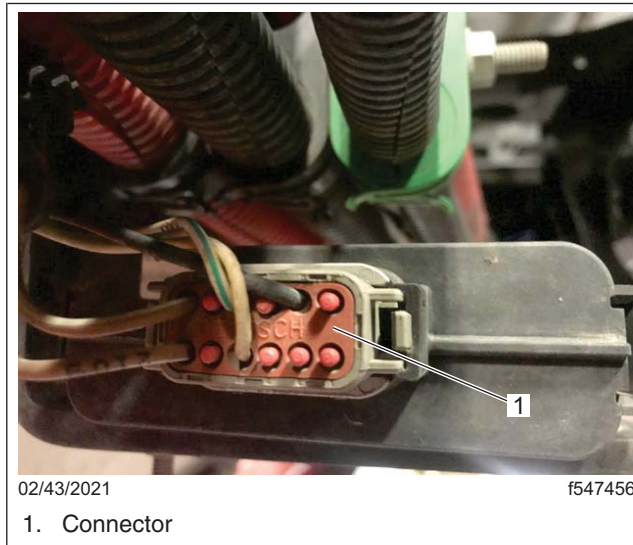


Fig. 2, TPMS Module Connector

4. Remove the two M6 x 1 capscrews and flange-head nuts from the mounting bracket, then remove the TPMS module. See [Fig. 3](#).

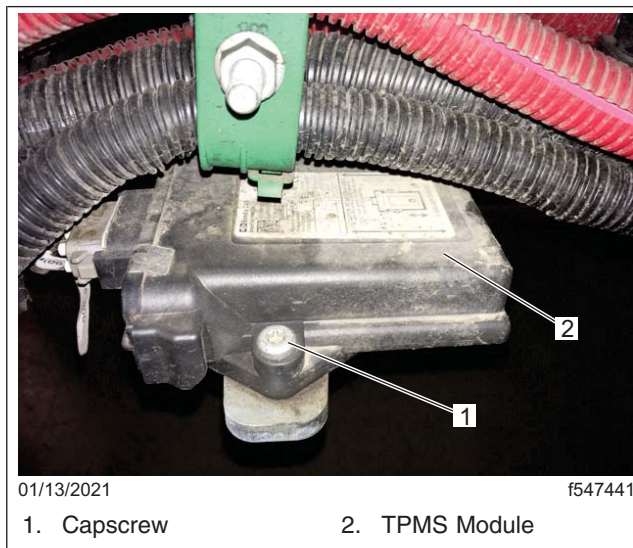


Fig. 3, Fastener Removal

5. Inspect the TPMS housing date code. If the date is between February 2019 and June 2019, replace the TPMS module. See [Fig. 4](#) for the location of the date code.

FLA COE
FLB COE
FLD Conventional
Business Class
FLC 112 Conventional

Century Class Conventional
Argosy
Cargo
Columbia
122SD and Coronado

Business Class M2
Cascadia
108SD/114SD
> New Cascadia



Fig. 4, TPMS Housing Date Code

6. Install the new TPMS module on the vehicle mounting bracket and tighten the capscrews 90 lbf-in (113 N-cm).
7. Connect the wiring harness to the main connector on the receiver. Make sure that the harness (wire) connected to the TPMS has a drip loop and is securely fastened to the connector with the tie strap as shown in [Fig. 5](#).

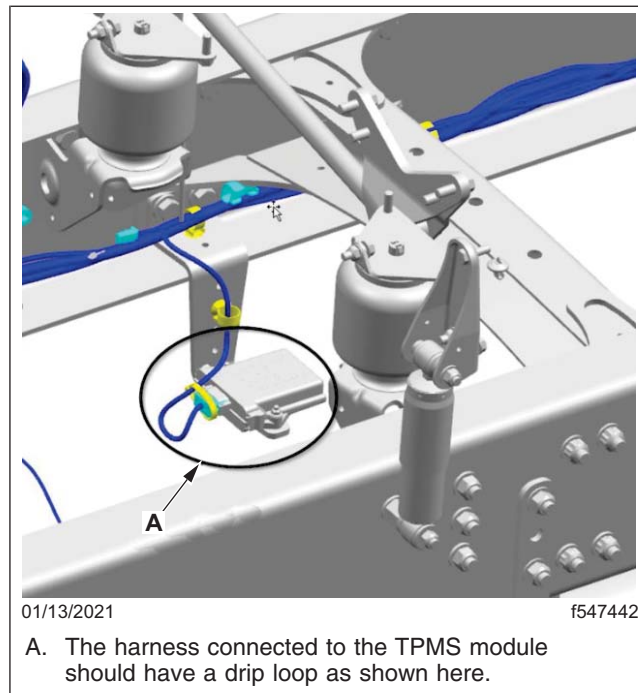


Fig. 5, Securing the Harness

FLA COE
 FLB COE
 FLD Conventional
 Business Class
 FLC 112 Conventional

Century Class Conventional
 Argosy
 Cargo
 Columbia
 122SD and Coronado

Business Class M2
 Cascadia
 108SD/114SD
 > New Cascadia

**Freightliner
 Service Bulletin**

Warranty

This procedure is warrantable only if the described condition exists and the repair is performed within the applicable base or extended coverage warranty period. If a failure is not found, this procedure is considered preventive and warranty does not apply.

Normal warranty applies. See [Table 1](#) for OWL VMRS codes and labor allowance information. Enter this service bulletin number in the *Service Bulletin #* field.

OWL VMRS Codes and Labor Allowance					
Primary Failed Part	Component Code	Cause Code	SRT Code	Description	Time: Hours
TPMS Module	017-009-030	06	489-5001A	TPMS Module, Tire Pressure Monitoring System ECU, R/R, (SB 54-341)	0.3

Table 1, OWL VMRS Codes and Labor Allowance