

# TMMBC Tacoma 8T0 Blue Paint Flaking or Peeling of Factory-Applied Paint Clear Coat Layer

**Service Category** Vehicle Exterior

**Section** Paint/Coatings

**Market** USA

Toyota Supports  
ASE Certification 

## Applicability

YEAR(S)	MODEL(S)	ADDITIONAL INFORMATION
2017	Tacoma	WMI(s): 3TM

### REVISION NOTICE

January 12, 2021 Rev1:

- The Service Bulletin title has been updated.
- The Vehicle Inspection section has been updated.

Any previous printed versions of this bulletin should be discarded.

## Introduction

Some 2017 model year Tacoma vehicles painted with 8T0 Blue Metallic may exhibit clear-coat peeling on one or more panels. The peeling occurs in the clear coat layer, exposing the base coat to the sunlight and fading the color to white. The affected panel(s) will require prepping and repainting to address this condition. The paint repair may need to be sublet to a body shop.

## Production Change Information

This bulletin applies to vehicles produced **WITHIN** the Affected Production Date Range shown below.

MODEL	PLANT	COLOR	DATE: AFFECTED PRODUCTION RANGE
Tacoma	TMMBC	8T0 Blue Metallic	1/24/2017 – 3/8/2017

## TMMBC Tacoma 8T0 Blue Paint Flaking or Peeling of Factory-Applied Paint Clear Coat Layer

### Warranty Information

CLAIM TYPE	OP CODE	DESCRIPTION	TIME	OFP	T1	T2
Paint	P + (Applicable T-3 Code)	Condition Confirmed – Sublet to Body Shop	0.0	N/A	69	82

#### NOTE

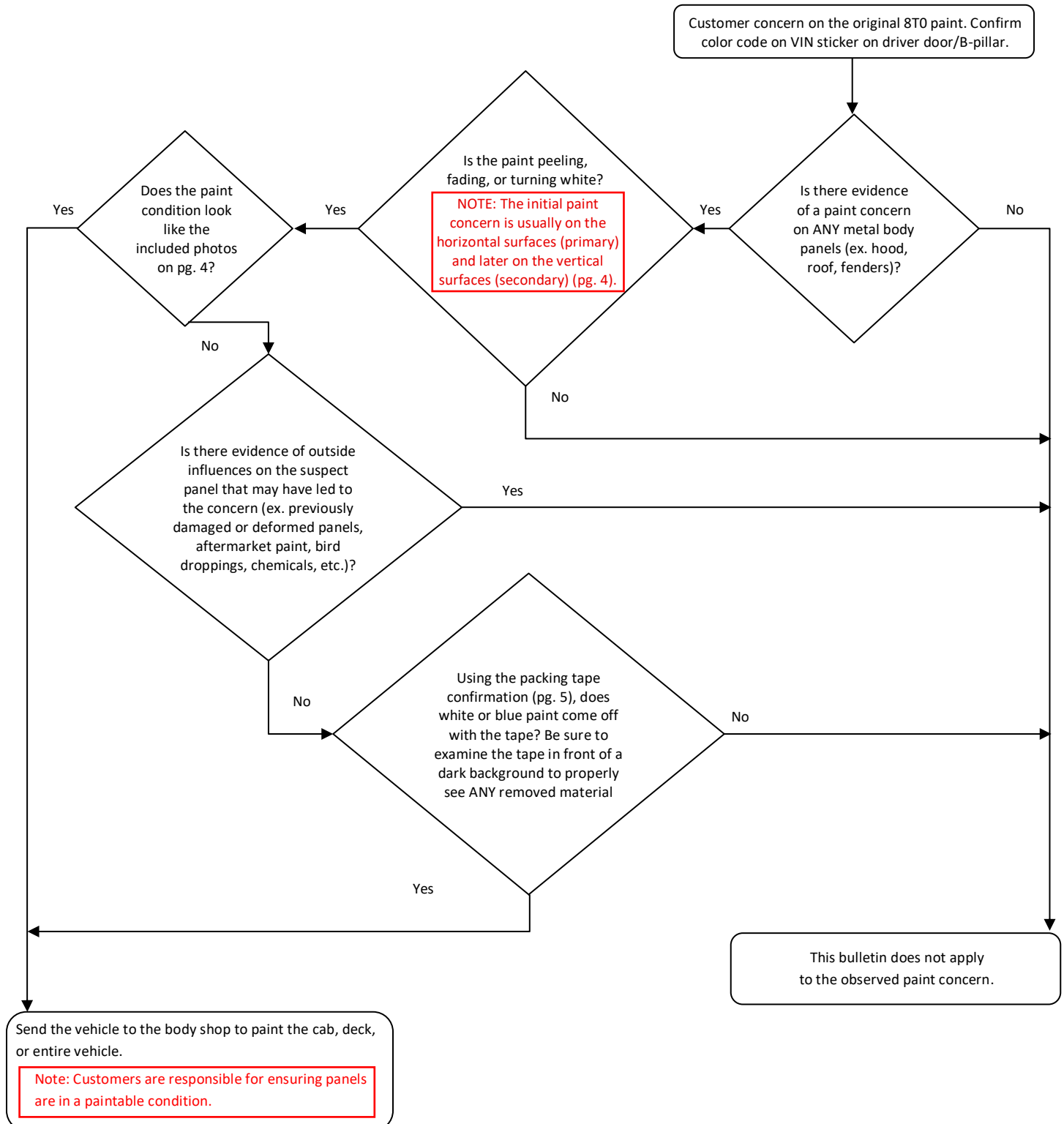
- Use sublet type "PT" for body shop repairs. Invoice required to be attached to the warranty claim.
- Select all **applicable T-3 position codes** and submit 1 claim for all positions on the vehicle.
- If Genuine Toyota parts are needed, claim under replacements parts.
- See Warranty Policy 4.12 for additional information on paint claim submission.

#### APPLICABLE WARRANTY

- This repair is covered under the Toyota Basic Warranty. This warranty is in effect for 36 months or 36,000 miles, whichever occurs first, from the vehicle's in-service date.
- Warranty application is limited to occurrence of the specified condition described in this bulletin.

# TMMBC Tacoma 8T0 Blue Paint Flaking or Peeling of Factory-Applied Paint Clear Coat Layer

## Vehicle Inspection

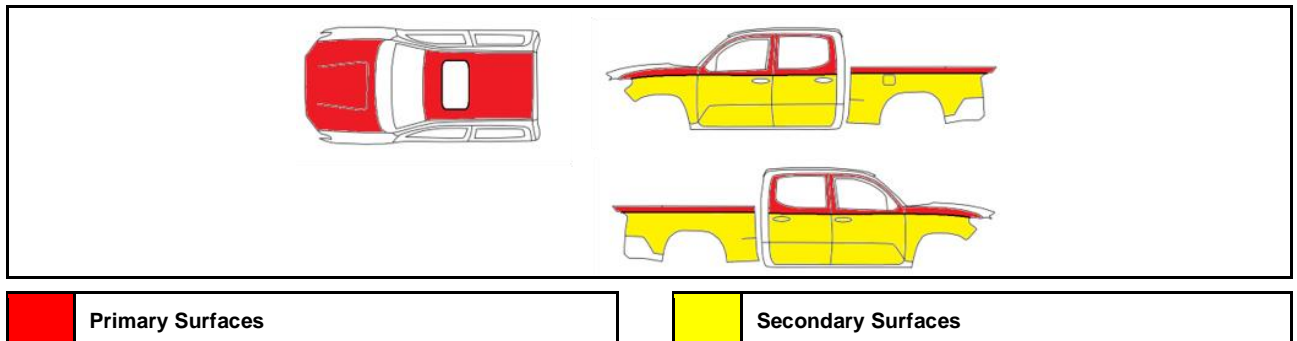


# TMMBC Tacoma 8T0 Blue Paint Flaking or Peeling of Factory-Applied Paint Clear Coat Layer

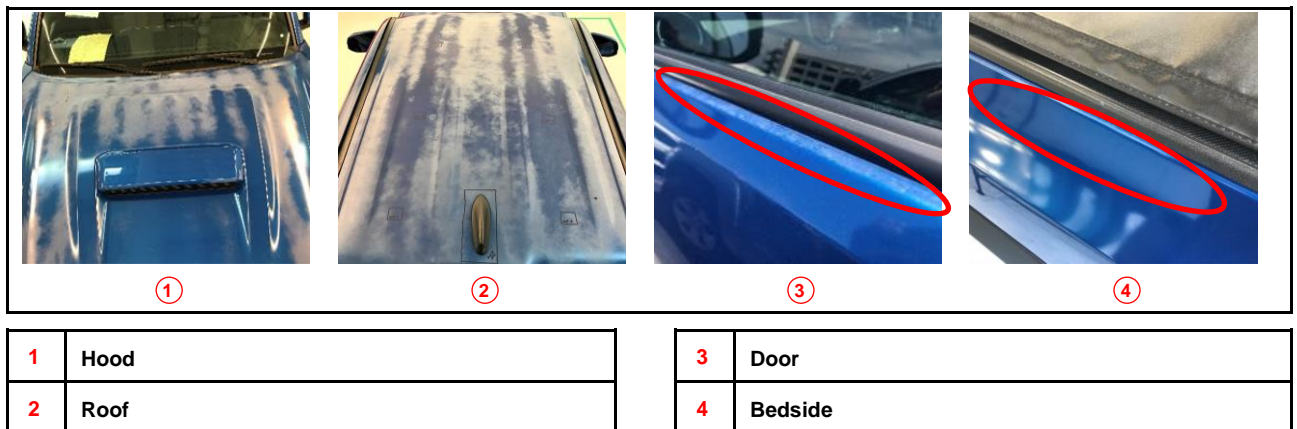
## Repair Procedure

### Supporting Visual Aids

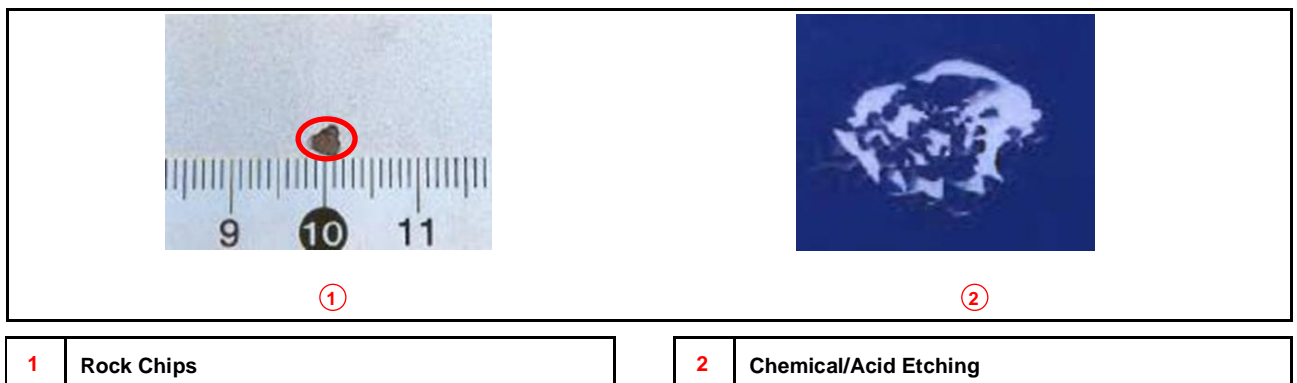
**Figure 1. Exposed Substrate**



**Figure 2. Examples of Clear Coat Peeling That Are Applicable to This Service Bulletin**



**Figure 3. Examples of Paint Conditions That Are Not Applicable to This Service Bulletin**



# TMMBC Tacoma 8T0 Blue Paint Flaking or Peeling of Factory-Applied Paint Clear Coat Layer

## Repair Procedure (continued)

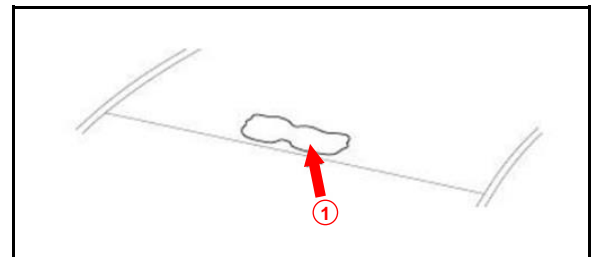
### Packing Tape Confirmation

1. Confirm the location of the concern area.

#### NOTE

Concern area is peeling, fading, and/or whitening.

Figure 4.

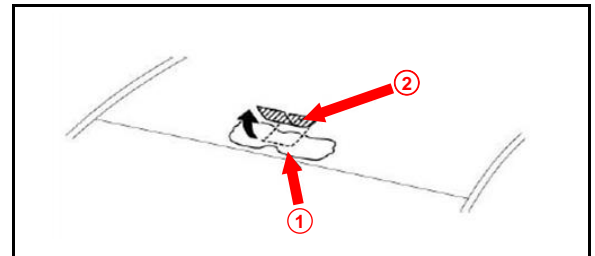


1

Peeling, Fading, Whitening Concern Area

2. Wash/rinse the area to clean off ANY dirt, sand, or debris.

Figure 5.



1

Peeling, Fading, Whitening Concern Area

2

Packing Tape

3. Take a clean dry cloth and dry the concern area.
4. Move the vehicle inside or under shade. Avoid working under direct sunlight and high temperatures (above 90°F).
5. Adhere a NEW piece of packing tape over the concern area and cover a minimum of 2 in. across the painted surface of the panel. Ensure you have continuous adhesion between the tape and panel.
6. Beginning with the end of the concern area side, quickly pull the packing tape at a 45-degree angle until the tape is completely removed.
7. Did the packing tape remove ANY white or blue paint particles?
  - **YES** — Send the vehicle to the body shop. If cab panel(s) are peeling, repaint cab. If deck panel(s) are peeling, repaint deck.
  - **NO** — This bulletin does NOT apply. Continue diagnosis using the applicable Repair Manual.