



INSTRUCTION TO SERVICE

ITS: 59144

SECTION:	400 Structures
WRITTEN BY:	Mike Pearson
SUBJECT:	Relocate rear shelf drain hole

ITS59144

THIS ITS DOCUMENT SHOULD BE RETAINED AND REFERED TO FOR FUTURE MAINTENANCE UNTIL THE NEW FLYER PARTS AND/OR SERVICE MANUAL IS UPDATED TO REFLECT WORK DONE AS A RESULT OF THIS DOCUMENT. ENSURE THAT THIS DOCUMENT IS AVAILABLE FOR PARTS AND MAINTENANCE STAFF GOING FORWARD.

THIS DOCUMENT AND THE CONTENTS DISCUSSED HEREIN ARE THE CONFIDENTIAL AND PROPRIETARY INFORMATION OF NEW FLYER INDUSTRIES CANADA ULC AND NEW FLYER OF AMERICA INC. AND ARE DISCLOSED BY NEW FLYER IN CONFIDENCE. THIS DOCUMENT AND THE CONTENTS HEREIN ARE NOT TO BE DISCLOSED BY THE INTENDED RECIPIENT WITHOUT THE PRIOR WRITTEN AUTHORIZATION OF NEW FLYER. ANY UNAUTHOIZED DISCLOSURE, REPRODUCTION OR OTHER DISTRIBUTION OF THIS DOCUMENT OR INFORMATION IS STRICTLY PROHIBITED AND MAY RESULT IN ACTION BEING TAKEN AGAINST THE PARTY MAKING THE UNAUTHORIZED DISCLOSURE. THIS DOCUMENT AND ALL COPIES HEREOF MUST BE RETURNED TO NEW FLYER UPON REQUEST.

PROCEDURE:

1. Turn the main battery disconnect switch to the "OFF" position.
2. Open the rear engine access door.
3. Locate the switch box as shown in Figure 1 and examine the existing rotary run knob, if cracked or degraded replace with new knob p/n 831315.

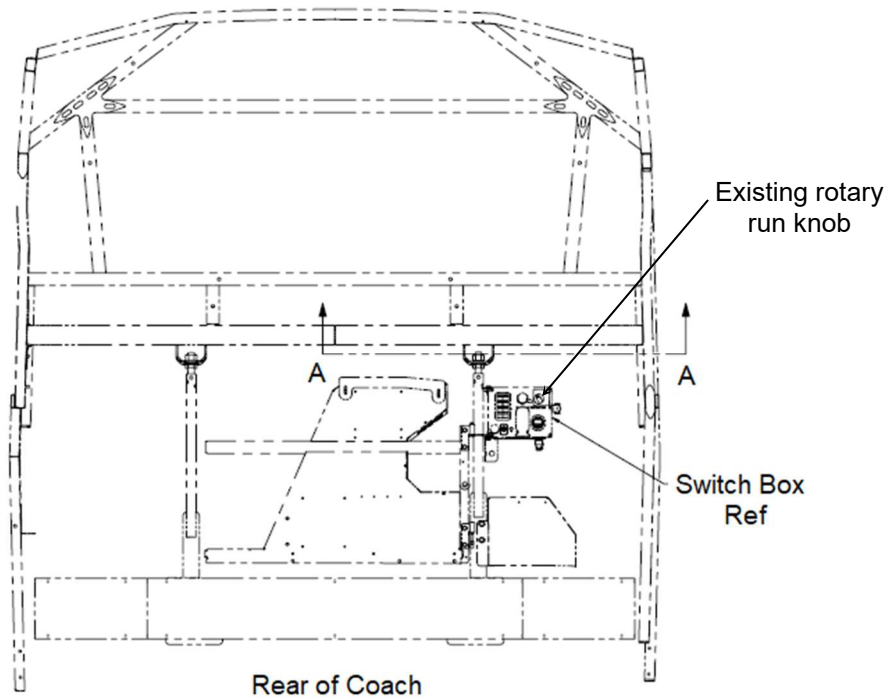


Figure 1: Switch Box Location

4. Run a continuous bead of Sika sealant p/n 242702 in and around the existing drain hole, plug using p/n 116508.
5. Drill a 0.50 Ø hole in the rear shelf structural tube above the switch box at dimensions shown in Figure 2.

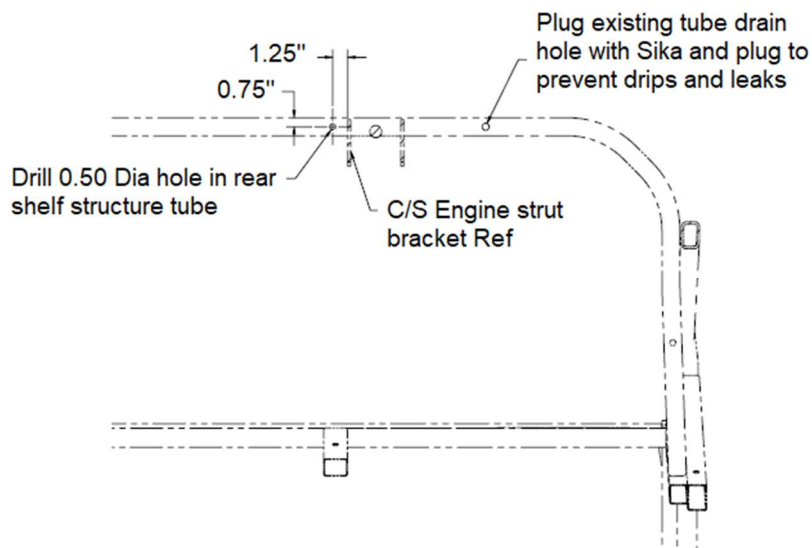


Figure 2: New Drain Hole Location



NEW FLYER

LABOUR ESTIMATE

	Operation	Men	Hours	Labour Time M X HR
1	Relocate rear shelf drain hole	1	0.25	0.25

PARTS REQUIRED

Item	Part Number	Description	Qty. per Coach	Units	Notes
1	242702	Adhesive-Sika 221 White	4	ML	
2	116508	Plug-Plastic #13	1	EA	
3	831315	Knob-Rotary Switch	1	EA	As needed