

ATTENTION:

- GENERAL MANAGER
- PARTS MANAGER
- CLAIMS PERSONNEL
- SERVICE MANAGER

IMPORTANT - All Service Personnel Should Read and Initial in the boxes provided, right.

© 2018 Subaru of America, Inc. All rights reserved.



QUALITY DRIVEN® SERVICE

SERVICE INFORMATION BULLETIN

APPLICABILITY: 2000 – 2014MY Legacy and Outback
 2003 – 2007MY Baja
 2001 – 2018MY Impreza
 2013 – 2018MY Crosstrek
 2001 – 2018MY Forester
 2002 – 2005MY WRX

NUMBER: 03-82-18R

DATE: 10/26/18

REVISED: 01/12/21

SUBJECT: Clutch Release (Throw-Out) Bearing-Design Change

INTRODUCTION:

This Service Information bulletin announces a design change to the clutch release bearing used on the models as listed above. During assembly of the bearing, a different type of grease is used which has a higher resistance to heat. In cases where the operator keeps a foot on the clutch pedal for extended periods, an increased amount of heat is generated which can cause the grease inside the bearing to deteriorate. In a case of prolonged clutch pedal application, seizure of the bearing can occur with potential damage to other related components.

PRODUCTION CHANGE INFORMATION:

The new release bearings were incorporated into production as per the table below:

Model	Starting VIN
Legacy	H1068448
Outback	H1389250
Impreza 4-Door	H1620092
Impreza 5-Door	H1739055
Crosstrek	HG250241
Forester	HG553016

Continued...

CAUTION: VEHICLE SERVICING PERFORMED BY UNTRAINED PERSONS COULD RESULT IN SERIOUS INJURY TO THOSE PERSONS OR TO OTHERS.

Subaru Service Bulletins are intended for use by professional technicians ONLY. They are written to inform those technicians of conditions that may occur in some vehicles, or to provide information that could assist in the proper servicing of the vehicle. Properly trained technicians have the equipment, tools, safety instructions, and know-how to do the job correctly and safely. If a condition is described, DO NOT assume that this Service Bulletin applies to your vehicle, or that your vehicle will have that condition.

Subaru of America, Inc. is ISO 14001 Compliant

ISO 14001 is the international standard for excellence in Environmental Management Systems. Please recycle or dispose of automotive products in a manner that is friendly to our environment and in accordance with all local, state and federal laws and regulations.

PART INFORMATION:

The new release bearing part numbers are **30502AA121** and **30502AA150**. Always order the most updated part number based on the specific VIN. Comparison images for identification purposes are supplied below.



SERVICE PROCEDURE / INFORMATION:

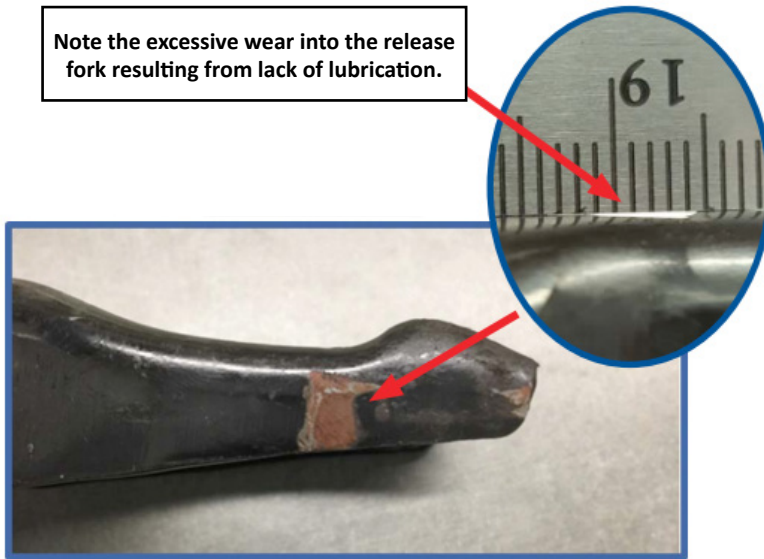
IMPORTANT REMINDERS:

- Customer satisfaction and retention starts with performing quality repairs.
- The service procedures for replacing the release bearing remain unchanged. Always refer to the applicable Service Manual and review the full requirements of the repair being performed. The Service Manual procedures contain information critical to performing an effective repair the first time and every time. This includes but is not limited to: important SAFETY precautions, proper inspection criteria, necessary special tools and related one-time-use parts needed for a complete and lasting repair.
- To avoid customer concerns of a post-repair creaking, squeaking or clicking sound possibly accompanied by increased pedal effort (stiffness) when operating the clutch pedal, always thoroughly clean, inspect for signs of wear and re-lubricate the clutch release components. Any worn components identified should be replaced. For example: see the photos below which show excessive wear on areas of the release fork which was the root cause of a squeaking sound heard while the engine was running.

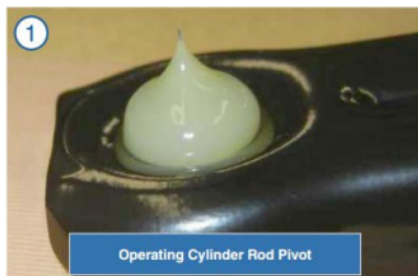
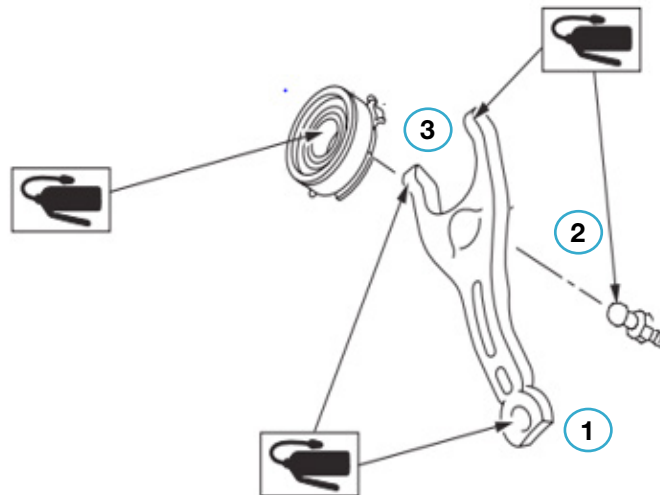


Continued...

Note the excessive wear into the release fork resulting from lack of lubrication.



- Cleaning the transmission case surrounding the clutch assembly is also necessary to prevent dirt or debris from contaminating the lubricant and interfering with release lever or bearing operation.
- Where applicable, the release lever (fork), shaft, pivot ball / stud, ends of the operating cylinder rod, release bearing contact points on both the release lever and pressure plate along with the input shaft splines should all be properly lubricated with the grease specified in the Service Manual (Nichimoly N-130, Conoco-Philips Multiplex Red #2 or Subaru p.n. 000041000) then checked closely for smooth operation before reinstalling the transmission. It is also important to apply the grease **sparingly** as shown below, especially on the transmission input shaft splines to avoid grease contamination of the clutch disc's friction material.



Continued...

IMPORTANT REMINDERS:

- SOA strongly discourages the printing and/or local storage of service information as previously released information and electronic publications may be updated at any time.
- Always check for any open recalls or campaigns anytime a vehicle is in for servicing.
- Always refer to STIS for the latest service information before performing any repairs.