

FLA COE
FLB COE
FLD Conventional
Business Class
FLC 112 Conventional

Century Class Conventional
Argosy
Cargo
Columbia
122SD and Coronado

Business Class M2
Cascadia
108SD/114SD
> New Cascadia

**Freightliner
Service Bulletin**

General Information

The integrative predictive powertrain control (IPPC) module programming should be updated to the newest software (D1.04.01 or later) on New Cascadia vehicles built from September 15, 2019 through August 30, 2020.

If the ignition short-cycles on these vehicles with the previous software, there is a risk that the IPPC module will not have time to write EEPROM data in the controller. If this occurs, the IPPC will set check sum fault 520208/19 and will require programming to clear it.

Software is now available to update the IPPC.

Work Instructions

1. Park the vehicle on a level surface, shut down the engine, and set the parking brake. Chock the tires.
2. Connect the power supply to the computer before programming.
3. Ensure that the computer does not go into sleep mode or power down during programming. (This may cause an increased time to program the module.)
4. Connect DiagnosticLink.
5. Turn the ignition ON: Key ON, Engine OFF.
6. Go to "Identification" at the left side of the screen and verify the start of the "Hardware Part Number" is A000 446 34 75. See [Fig. 1](#).

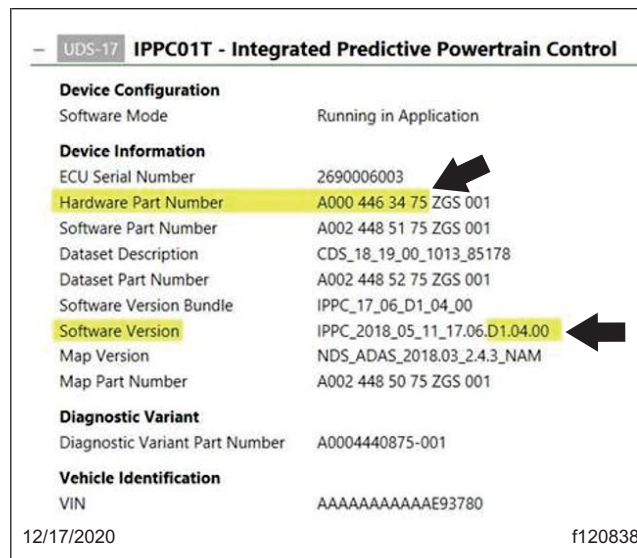


Fig. 1, IPPC Identification Screen

This service bulletin doesn't apply if the "Hardware Part Number" is other than A000 446 34 75.

7. If the hardware is A000 446 34 75, check the software version. The updated software version is D1.04.01 or later. See [Fig. 1](#).

If the software version is earlier than D1.04.01, such as D1.04.00 as in this example, the software needs to be updated.

8. To update the software, go to the "Program Device" tab on the left side of the screen.
9. Connect to the server to download the latest software. See [Fig. 2](#).

08/13/2020 f120807

- A. Select IPPC01T as the device to program.
- B. Check the circle for "Replace device settings with Server Configuration."
- C. Click on "Vehicle plant configuration."
- D. Click the "Next" button.

Fig. 2, Program Device Screen

- 9.1 In the center box select IPPC01T as the device to program.
 - 9.2 Select the circle for "Replace device settings with Server Configuration."
 - 9.3 Click on "Vehicle plant configuration."
 - 9.4 Click the "Next" button.
10. A popup window with a warning will show; disregard this message and click "OK."

Update the Programming of the Integrative Predictive Powertrain Control (IPPC) Module

54-339

Freightliner Service Bulletin

FLA COE
FLB COE
FLD Conventional
Business Class
FLC 112 Conventional

Century Class Conventional
Argosy
Cargo
Columbia
122SD and Coronado

Business Class M2
Cascadia
108SD/114SD
> New Cascadia

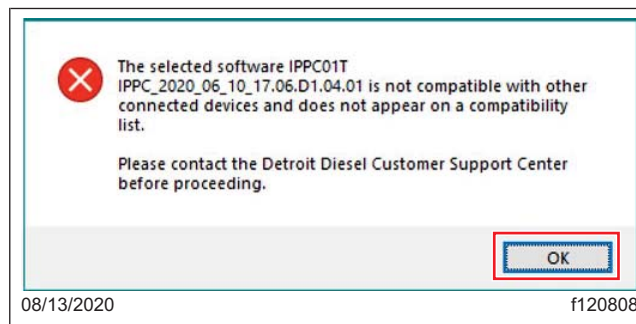


Fig. 3, Compatibility Popup Warning.

11. The screen will populate to start programming the IPPC01T module. Highlighted is the current IPPC software (in this example it is D1.04.00) and the target IPPC software (in this example it is D1.04.01). Click the “Start” button to proceed with programming.

Update the Programming of the Integrative Predictive Powertrain Control (IPPC) Module

54-339

FLA COE
FLB COE
FLD Conventional
Business Class
FLC 112 Conventional

Century Class Conventional
Argosy
Cargo
Columbia
122SD and Coronado

Business Class M2
Cascadia
108SD/114SD
> New Cascadia

Freightliner
Service Bulletin

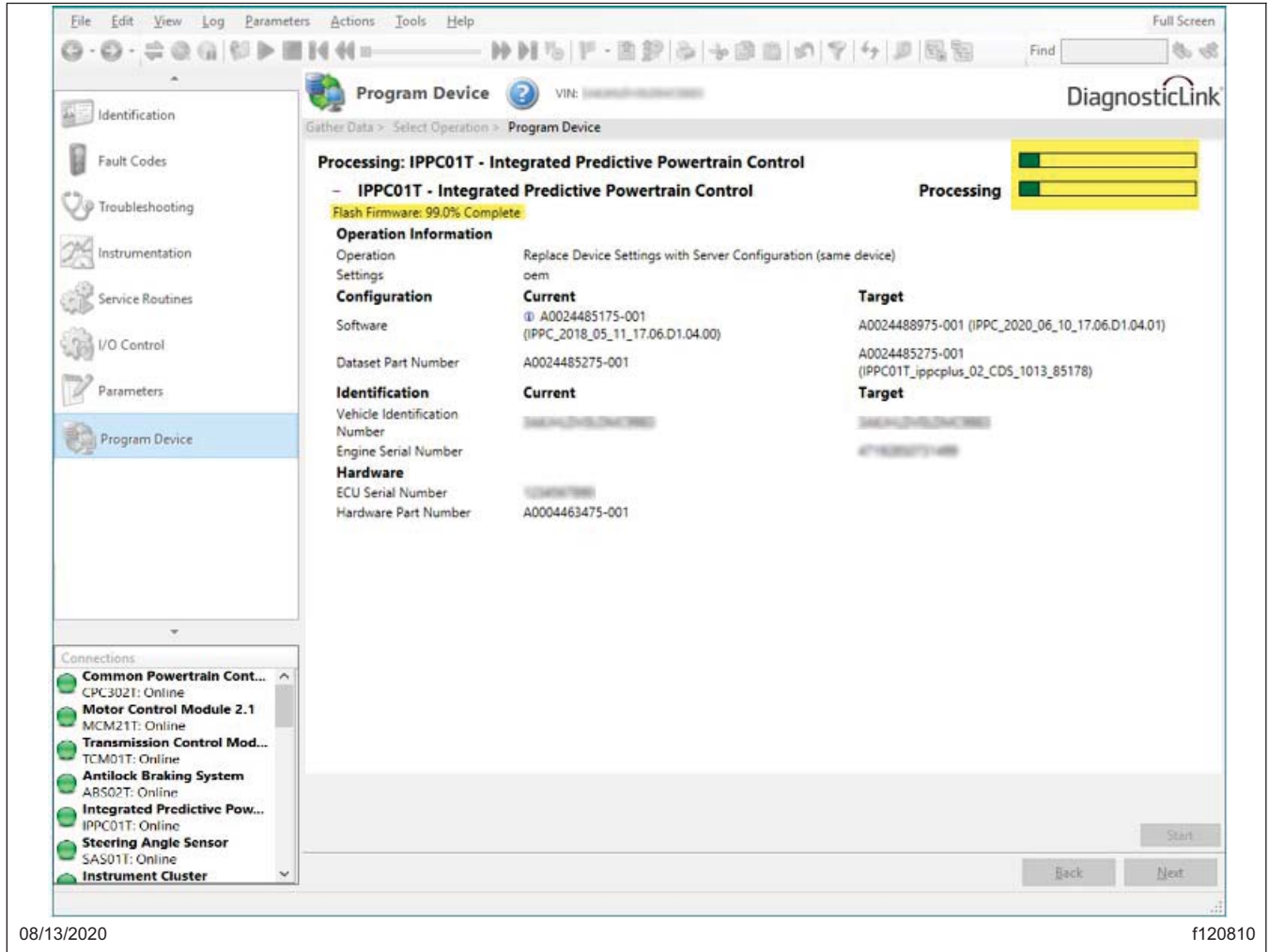


Fig. 5, Programming In Progress

13. Before the programming finishes, a second popup window with a warning will appear; disregard this message and click "OK."

FLA COE
FLB COE
FLD Conventional
Business Class
FLC 112 Conventional

Century Class Conventional
Argosy
Cargo
Columbia
122SD and Coronado

Business Class M2
Cascadia
108SD/114SD
> New Cascadia

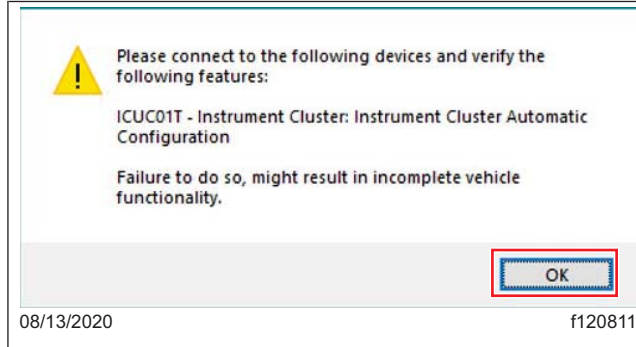


Fig. 6, ICUCO1T Popup Warning

14. The screen will indicate in the top right hand corner that the programming event has completed successfully. Click on the "Finish" button.

Update the Programming of the Integrative Predictive Powertrain Control (IPPC) Module

54-339

FLA COE
FLB COE
FLD Conventional
Business Class
FLC 112 Conventional

Century Class Conventional
Argosy
Cargo
Columbia
122SD and Coronado

Business Class M2
Cascadia
108SD/114SD
> New Cascadia

Freightliner Service Bulletin

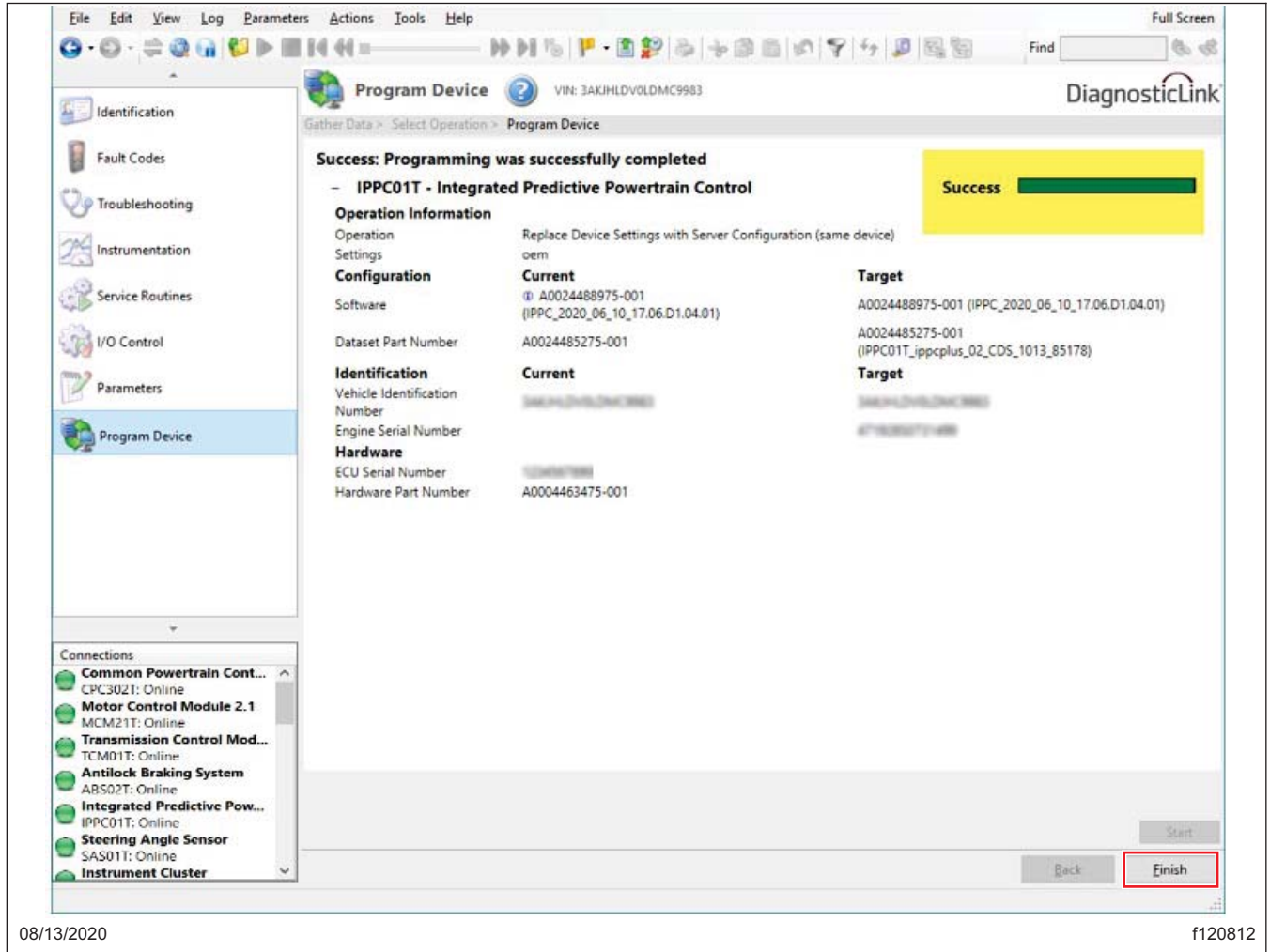


Fig. 7, Programming Successful Screen

15. Select "Identification" on the left side, then scroll down to the IPPC and confirm the software update to D1.04.01 or newer.

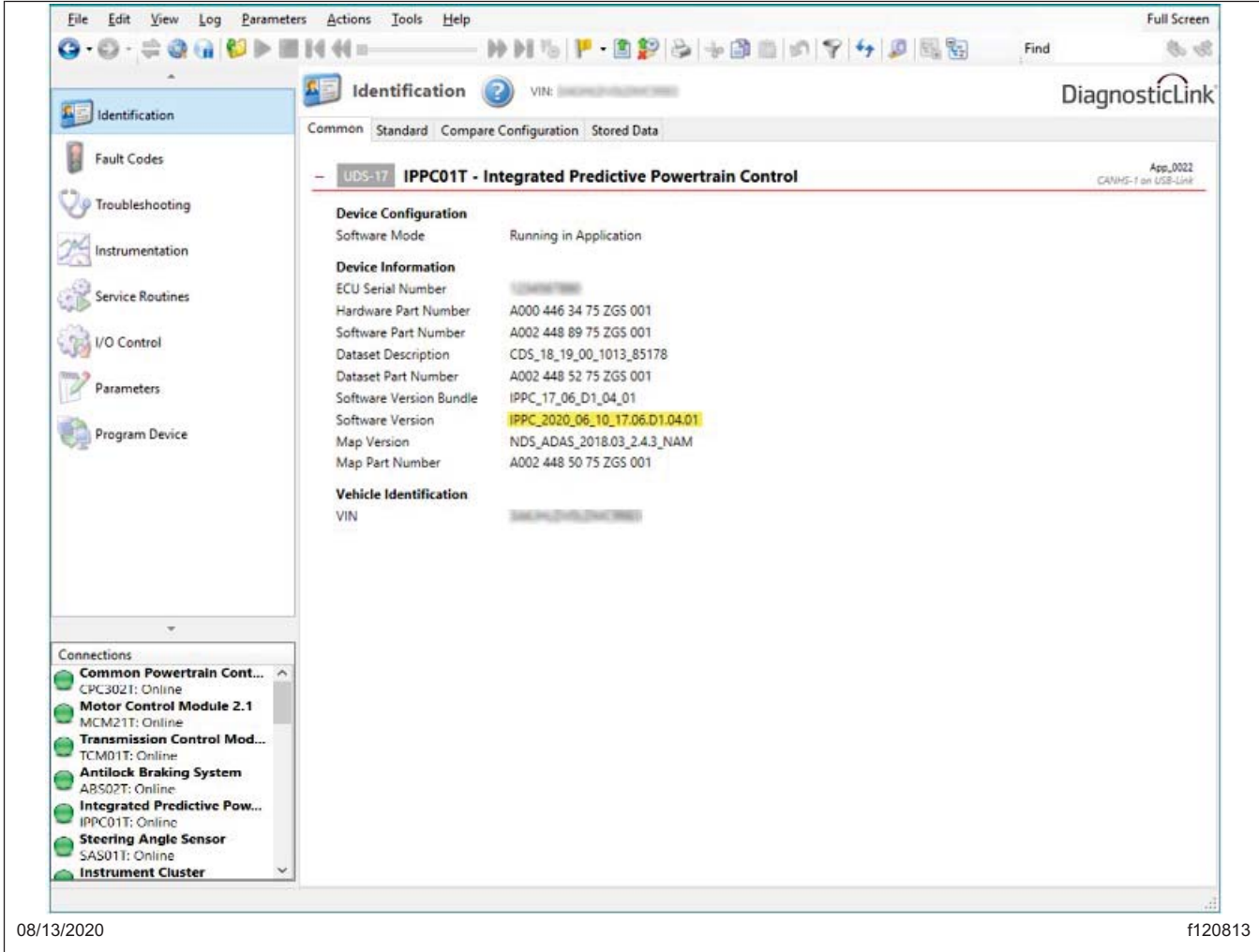


Fig. 8, Checking the Software Version to Confirm the Software Update

Warranty

Normal warranty applies. See [Table 1](#) for OWL VMRS codes and labor allowance information. Enter the bulletin number in the *Service Bulletin #* field.

OWL VMRS Codes and Labor Allowance					
Primary Failed Part	VMRS Code	Cause Code	SRT Code	Description	Time: Hours
MDL-IPM/IPPC-PLUS ECU, Part # A 000 446 34 75	044-011-052	95	149-5002A	IPPC, UPDATE PROGRAMMING, (SB 54-339)	0.3

Table 1, OWL VMRS Codes and Labor Allowance