

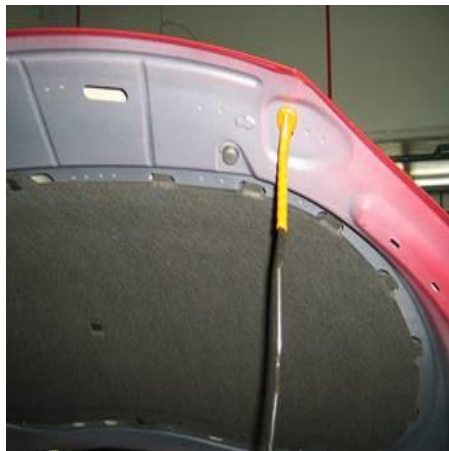


Condition

Applicable Vehicles					
Model(s)	Year	Eng. Code	Trans. Code	VIN Range From	VIN Range To
All (except Routan)	2005-2021	All	All	All	All

Revision Table			
Instance Number	Published Date	Version Number	Reason For Update
2021354/7	1/14/21	55-15-03	Include additional models and model year applicability.
2021354/2	10/27/09	V550903	Include U.S. market.
2021354/1	9/16/09	V550902	Original publication.

The paint color and/or finish of the engine compartment and underside of hood may not match the exterior paint color of the vehicle.



Example 1. Under Hood



Example 2. Under Hood



Example 3. Engine Compartment



Example 4. Engine Compartment



Note:

All pictures are from Tiguan engine compartment. This condition is considered normal.

Technical Background

Depending on vehicle model and production plant, the color of the engine compartment and underside hood may not match the vehicle body color.



Tip:

This condition is a result of production process and is not considered a technical defect.

Possible variations of engine compartment and under hood paint finish:

- Inner surface color may match exterior paint color with clear coat.
- Inner surface color may match exterior paint color without clear coat.
- Inner surface color may not match exterior paint color with clear coat.
- Inner surface color may not match exterior paint color without clear coat.

Production Solution

Not applicable.

Service

Please inform your customers that these body surfaces (engine compartment and underside of hood) are not directly visible (exposed) and therefore do not require the same finish as visible, exterior surfaces.

Warranty

Information only.



55-15-03 - Hood, Under Hood Not Painted Body Color

Release date: 1/13/2021

Required Parts and Tools

No Special Parts required.

No Special Tools required.

Additional Information

All part and service references provided in this Technical Bulletin are subject to change and/or removal. Always check with your Parts Dept. and Repair Manuals for the latest information.