



## Generator Plenum Installation

<b>Bulletin Type:</b>	SRP	<b>Publication Date:</b>	January 2021
<b>Bulletin #(s):</b>	20-031	<b>Make(s):</b>	Jayco Class A Entegra Class A
<b>Job Code(s):</b>	0301083	<b>Model(s):</b>	Jayco Precept Prestige Jayco Precept Entegra Emblem Entegra Vision Entegra Vision XL
<b>Flat Rate(s):</b>	.5 Labor		<b>Model Year(s):</b>
<i>** If affected unit has warranty remaining, submit your claim following the normal process.</i>			

<b>Incident:</b>	<b>Generator Overheating</b>
<b>Affected Units:</b>	Jayco Precept Prestige Jayco Precept Entegra Emblem Entegra Vision Entegra Vision XL
<b>Parts List:</b>	<p><b>Parts Needed Per Model:</b></p> <p><b>2" Generator Plenum (Jayco Part # 2016574)</b> Jayco Precept Prestige Class A Entegra Emblem Class A</p> <p><b>5" Generator Plenum (Jayco part # 2016573)</b> Jayco Precept Class A Entegra Vision Class A (N/A for M3AX-26X Floorplan) Entegra Vision XL Class A</p> <p><b>All models Need:</b> (1) - Generator Close-off Angle (Jayco part # 2017984) (1) - 3' foam tape (Jayco part # 0181972) (12) - ¼" self-tapping screws (Jayco part # 0173766)</p>
<b>Misc. Tools &amp; Supplies:</b>	Screw gun with a ¼" socket Isopropyl Alcohol and a shop rag

## INSPECTION

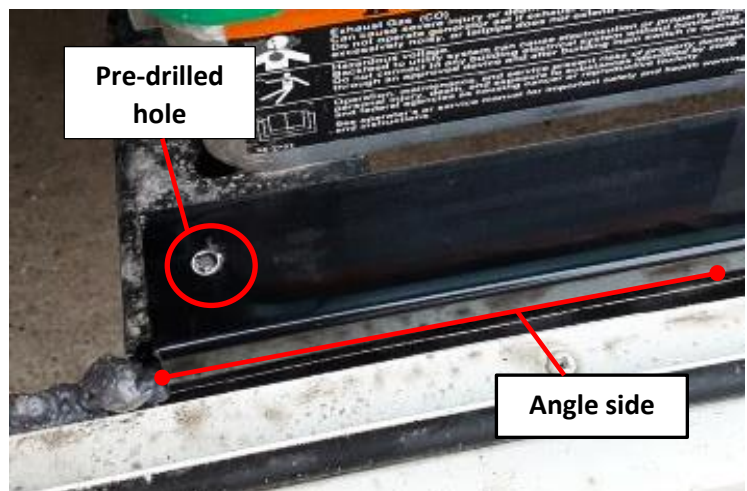
Confirm that the generator is overheating. If the generator is overheating inspect the unit for the generator plenum. If the unit does not have the generator plenum installed, proceed to the repair instructions.

## INSTRUCTIONS

**Repair Time:** ½ hour

### Installing the close-off angle

1. Access the generator through the access door. Locate the gap between the generator frame and the door frame.
2. Center the close-off angle with the pre-drilled screw holes on the top of the generator frame. The (side) of angle should be directed down and against the door frame.

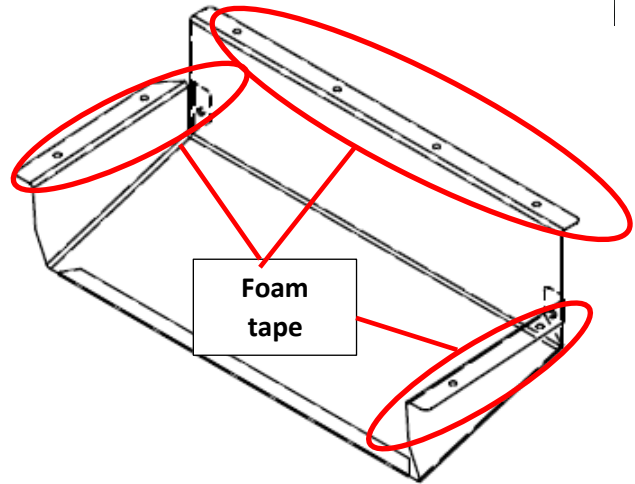


3. Install (1) self-tapping screw at each end of the angle in the pre-drilled hole.



### **Installing the Generator Plenum**

1. Clean the top and sides of the generator plenum with isopropyl alcohol. Allow the area to dry. Apply foam tape to the top (back and sides) of the plenum.



2. Locate the generator intake screen under the generator. Center the plenum over the intake screen with the opening towards the outside of the unit.



- Place the front of the plenum against the sidewall of the unit. Install (2) self-tapping screws on each end of the plenum in the pre-drilled holes. Install (4) self-tapping screws in the pre-drilled holes on the back of the plenum.



*Jayco's sole obligation under our limited warranty is to repair or replace defective materials and/or workmanship deemed our responsibility as determined by Jayco in our sole discretion. Jayco reserves the right to use new and/or remanufactured parts or materials of similar quality to complete any work, and to make parts and/or design changes as appropriate without notice to anyone. Jayco designs and/or materials changes are done without obligation to incorporate such changes in previously manufactured product. Jayco makes every reasonable effort to ensure field remedies will not adversely affect performance and/or safety of the unit. This field remedy is not intended to extend to future performance of this RV, or any of its materials, components or parts beyond the standard warranty period. The RV owner's obligation to notify Jayco, or one of its independent, authorized dealers, of a claimed defect does not modify any obligation placed on the RV owner to contact Jayco directly when attempting to pursue remedies under state or federal law. Jan. 2019.*

903 South Main Street • P.O. Box 460 • Middlebury, IN 46540