



| | |
|---------------|-----------------|
| GROUP | NUMBER |
| INTERIOR | 20-BD-003G |
| DATE | MODEL(S) |
| February 2020 | G80 (DH) |

Technical Service Bulletin

SUBJECT: SEAT BACKBOARD CLIP REPLACEMENT

This TSB supersedes TSB#19-BD-004G-1 to provide seat backboard clip location.

Description: Certain 2019-2020 G80 (DH) vehicles may have a condition where the seat backboard comes loose. This bulletin describes the procedure to replace the seat backboard clip.



Applicable Vehicles: 2019MY-2020MY G80 (DH)

Parts Information:

| Parts Name | Part Number | Qty. |
|---------------|---|------|
| CLIP ASSEMBLY |  | 1 |
| | 88399-B1000FFF | |

Circulate To: General Manager, Service Manager, Parts Manager, Warranty Manager, Service Advisors, Technicians, Body Shop Manager, Fleet Repair

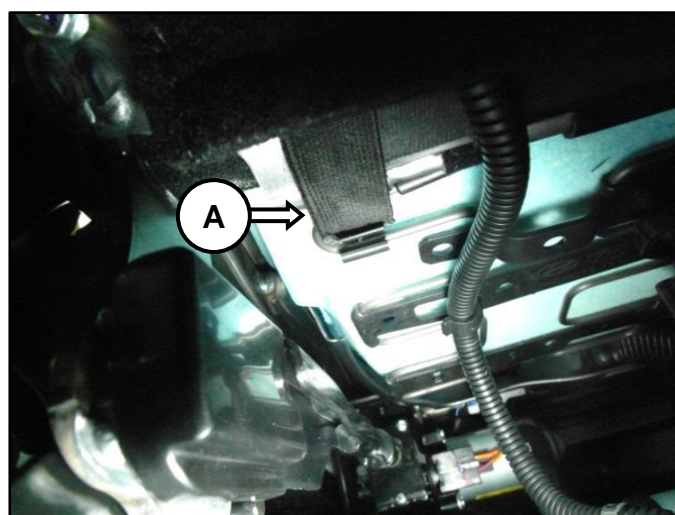
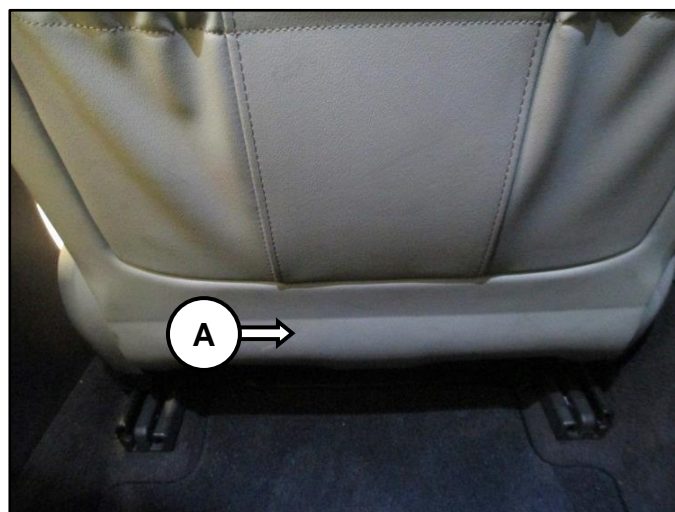
Warranty Information:

| Model | Op. Code | Operation | Op. Time | Causal Part | Nature Code | Cause Code |
|----------|----------|--|----------|------------------------------------|-------------|------------|
| G80 (DH) | 88399F00 | SEAT BACKBOARD MOUNTING CLIP REPLACEMENT (1~2EA) | 0.3 | 88380-B1000-*** 88380-B1100-*** | I86 | ZZ6 |
| | 88399F01 | SEAT BACKBOARD MOUNTING CLIP REPLACEMENT (3~4EA) | 0.5 | | | |

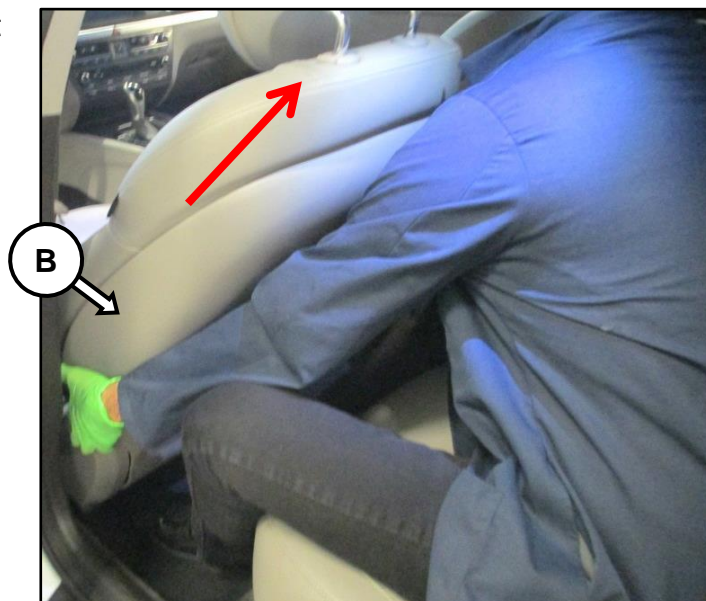
Note: *** = include color designation to part number when submitting claim.

Service Procedure:

1. Remove the protector (A) bottom straps located under the seat.



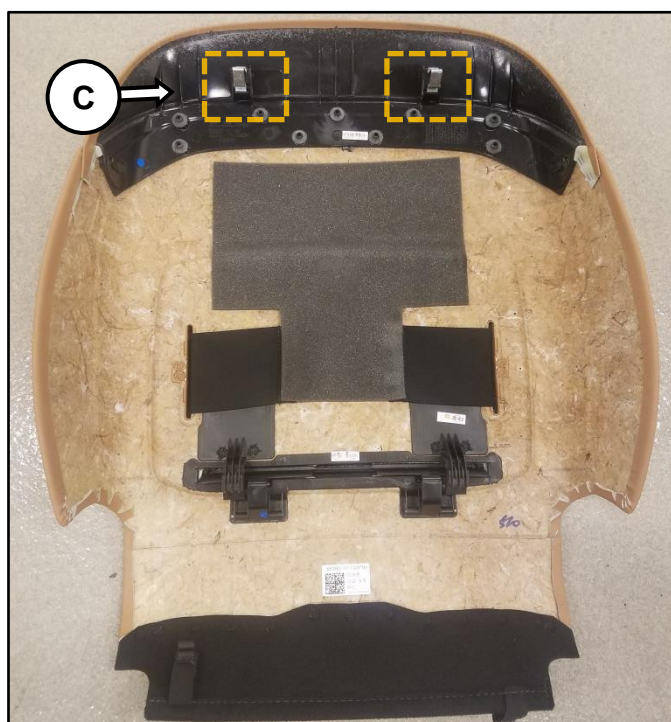
2. Place both hands at the bottom of the seat backboard (B), and lift to remove the backboard from the seat assembly.

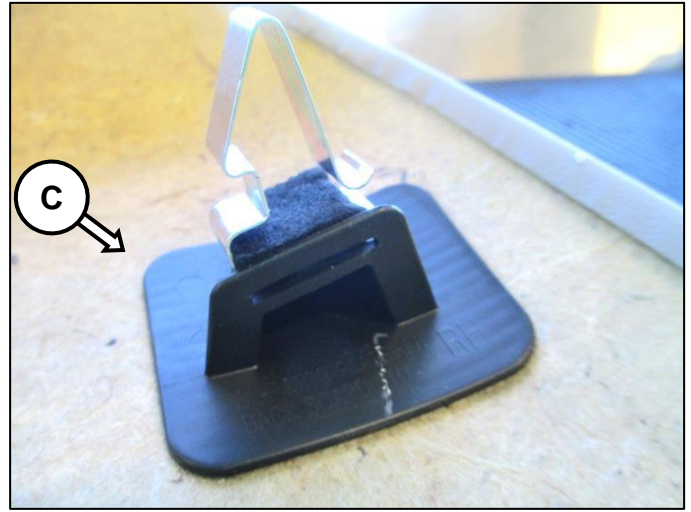
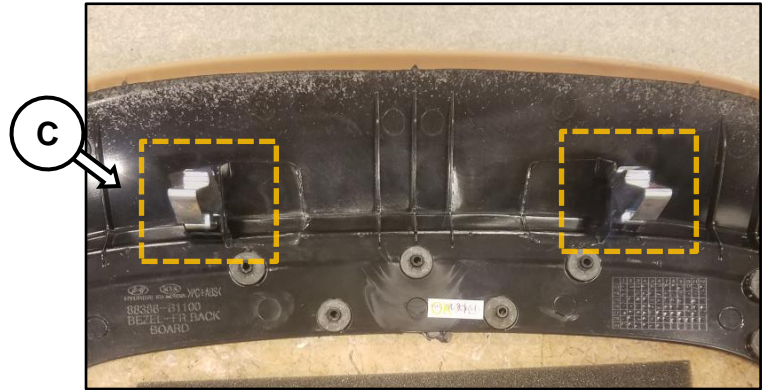
**⚠ CAUTION**

When removing, ensure not to damage bottom seat back retention hooks.



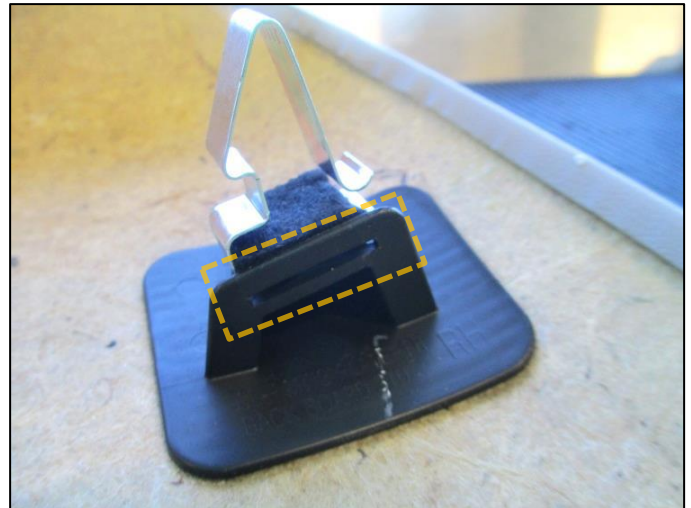
3. Lay the seat backboard on a clean workbench and locate the base clips (C).



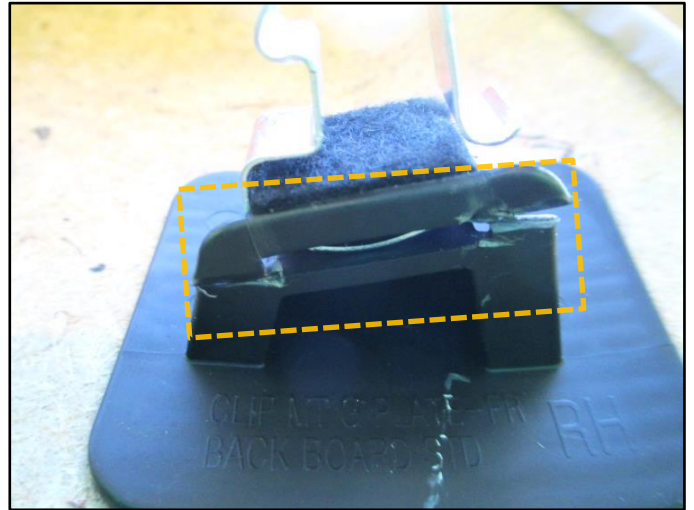


4. Inspect the base clips.

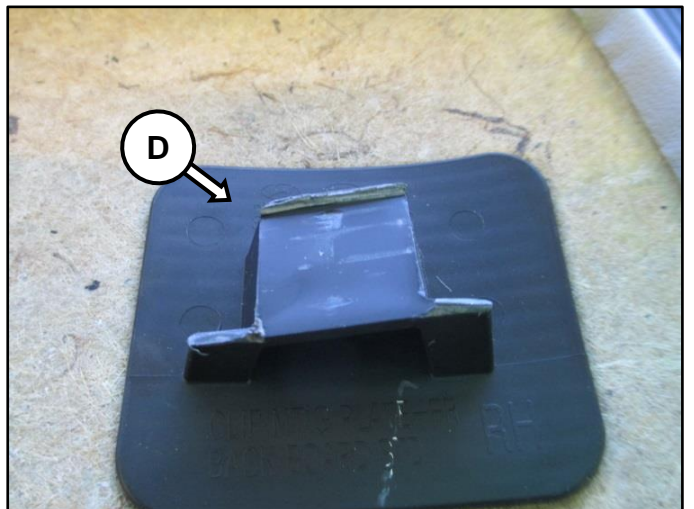
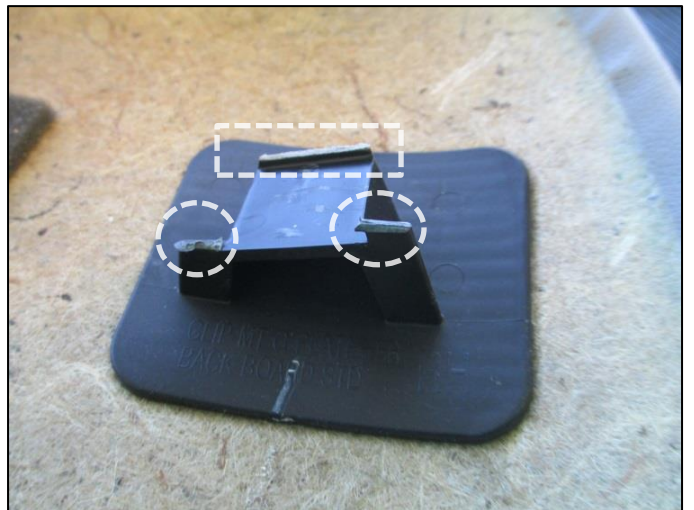
The base clip is normal.



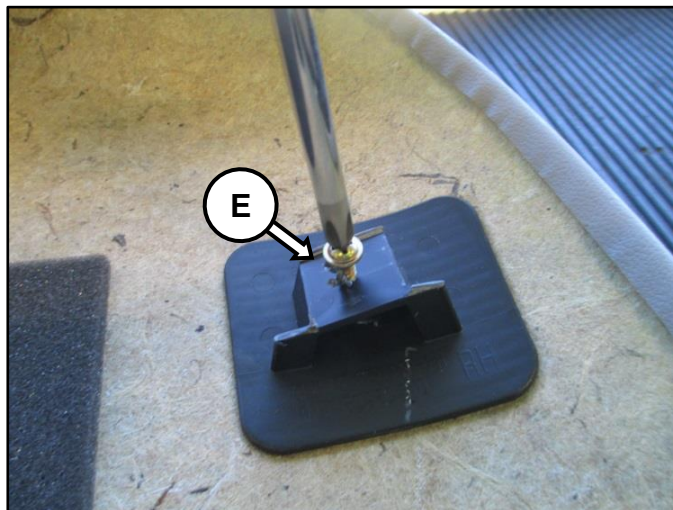
The base clip is broken.



5. Remove the broken base clip, and remove excess plastic to ensure base (D) is flat.



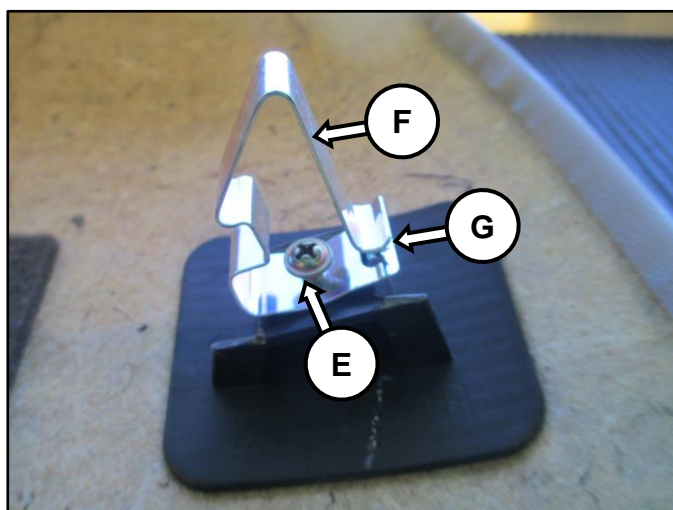
6. Tighten the supplied screw (E) to half screw length in the center of the base.



7. Assemble the screw (E) into the supplied new clip (F) and fully tighten to base.

NOTICE

Ensure opening (G) of clip is facing upward.



8. Reinstall the seat backboard to the seat assembly and reattach the protector straps.

