

STAR ONLINE PUBLICATION

Case Number: S1908000083 Rev. A

Release Date: 12/17/2020

Symptom/Vehicle Issue: Check Engine Light Illuminated, Stop Start Function Inoperative

Diagnosis: Customer concern is check engine light is on and Stop/Start lamp on, Stop/Start function inoperative.

- If one or more of DTC's P1050, P1053, P1052, P1055, P0010, and P0013 sets, inspect the G927A ground location (Engine Rear) on the injector harness as shown in **Fig1** for any looseness or damaged ground eyelet. Follow repair instructions below.
- If one or more of DTC's P1056, P1059, P1058, P105B, P0020, and P0023 sets. Inspect the G914A ground location (Engine Rear) on the injector harness as shown in **Fig1** for any looseness or damaged ground eyelet. Follow repair instructions below.

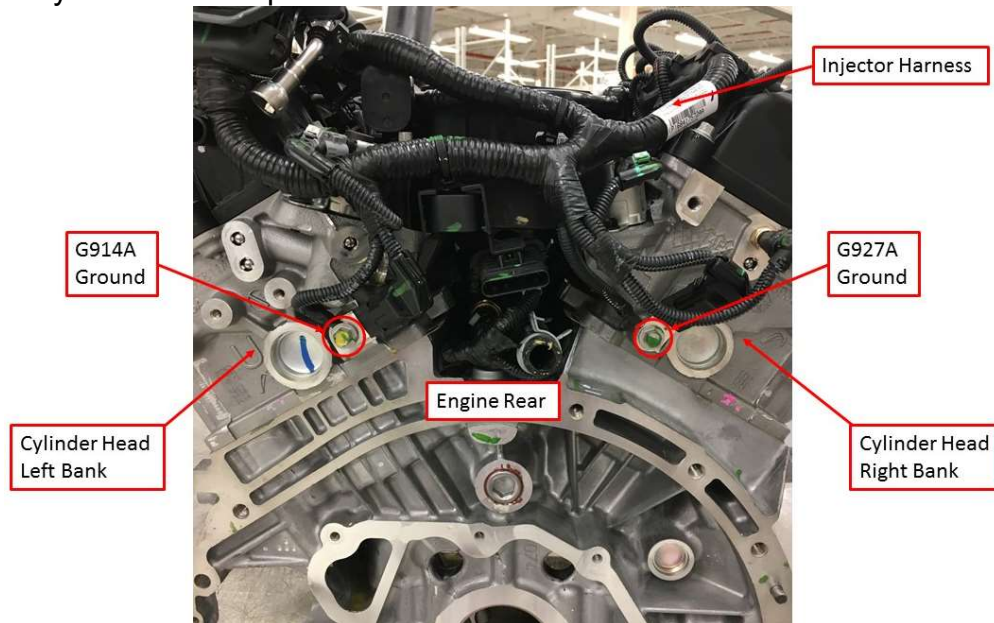


Fig1

This document does not authorize warranty repairs. This communication documents a record of past experiences. STAR Online does not provide any conclusions about what is wrong with the vehicle. Rather, it captures all previous cases known that appear to be similar or related to the vehicle symptom / condition. You are the expert, and you are responsible for deciding on the appropriate course of action.

Contact STAR Center, or your Technical Assistance Center Via TechCONNECT or eCONTACT ticket if no solution is found

STAR ONLINE PUBLICATION

Repair Procedure:

- 1- Loosen and remove the suspect ground bolt. Clean ground or replace harness as necessary.
- 2- Inspect the ground and capacitor bolt hole threads and repair if needed. See Fig2.

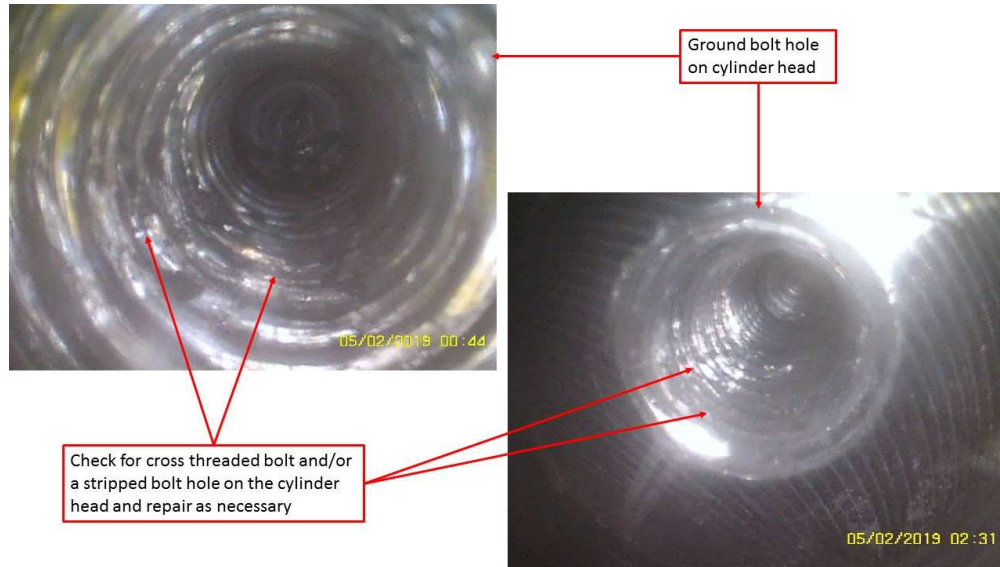


Fig2

- 3- Obtain new capacitor bolt. Place bolt through ground wire eyelet. See Fig3.

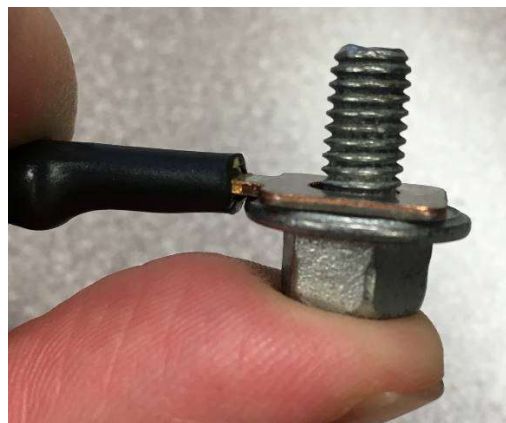


Fig3

This document does not authorize warranty repairs. This communication documents a record of past experiences. STAR Online does not provide any conclusions about what is wrong with the vehicle. Rather, it captures all previous cases known that appear to be similar or related to the vehicle symptom / condition. You are the expert, and you are responsible for deciding on the appropriate course of action.

Contact STAR Center, or your Technical Assistance Center Via TechCONNECT or eCONTACT ticket if no solution is found

STAR ONLINE PUBLICATION

4- Place bolt (with ground wire already on) through capacitor eyelet. Make sure the heat shrink insulation on the ground wire does not get trapped between the bolt and capacitor eyelet. DO NOT disconnect the capacitor from the wire harness. See Fig4.

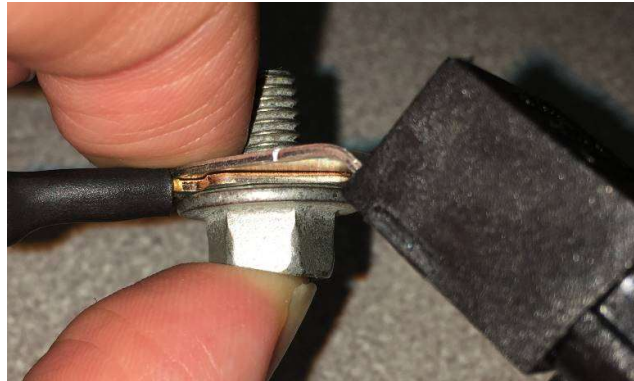


Fig4

5- Hand start the capacitor bolt (with the ground wire and capacitor still on) into the head.

6- Hold the capacitor flush against the back to the head, against the resting tab. Hold the ground wire in place ~90 degrees to the side. Zero torque the capacitor bolt. See Fig5

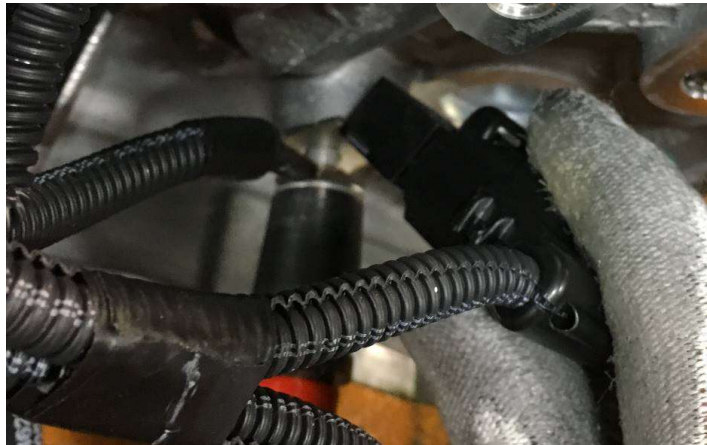


Fig5

7- Obtain the 10 Nm clicker torque wrench and torque the capacitor bolt.

This document does not authorize warranty repairs. This communication documents a record of past experiences. STAR Online does not provide any conclusions about what is wrong with the vehicle. Rather, it captures all previous cases known that appear to be similar or related to the vehicle symptom / condition. You are the expert, and you are responsible for deciding on the appropriate course of action.

Contact STAR Center, or your Technical Assistance Center Via TechCONNECT or eCONTACT ticket if no solution is found