

Transaxle Assembly and ECM (PCM) Software Confirmation

Service Category Engine/Hybrid System

Section Engine Control

Market USA

Toyota Supports
 ASE Certification 

Applicability

YEAR(S)	MODEL(S)	ADDITIONAL INFORMATION
2018	Camry	

REVISION NOTICE

December 11, 2020 Rev2:

- The entire bulletin has been updated.

November 15, 2018 Rev1:

- The Production Change Confirmation Procedure section has been updated.
- Any previous printed versions of this bulletin should be discarded.

Introduction

When completing a transaxle assembly replacement, Engine Control Module (ECM) (SAE term: Powertrain Control Module/PCM) replacement, or ECM (PCM) reprogram, ensure the correct ECM (PCM) software is matched with the transaxle assembly hardware. Some 2018 model year Camry vehicles require different ECM (PCM) software based on the transaxle assembly hardware installed in the vehicle.

NOTICE

Mismatched transaxle assembly hardware and ECM (PCM) software combinations may result in a harsh shift or shift flare. If this occurs after the original repair, additional ECM (PCM) replacement and reprogramming will be required. This additional ECM (PCM) replacement/reprogramming is NOT covered under warranty.

Use the information in this Service Bulletin to confirm that the correct ECM (PCM) hardware and software are used based on the transaxle assembly part number and serial number.

Transaxle Assembly and ECM (PCM) Software Confirmation

Warranty Information

OP CODE	DESCRIPTION	TIME	OFF	T1	T2
N/A	Refer to Applicable Warranty Box Below	–	–	–	–

APPLICABLE WARRANTY

- Warranty coverage is based on the Original Failed Part (OFF).
- For additional information regarding warranty coverage and flat rate time, please refer to the applicable TSB, Warranty Policy and Procedures Manual, and/or electronic Flat Rate Manual.

Parts Information

Table 1.

JUDGEMENT	PART NUMBER	PART NAME	QTY
Before	30510-####0-84	Reman ATM	1
	30500-####0	Transaxle, Assy	1
After	30510-####1-84	Reman ATM	1
	30500-####1	Transaxle, Assy	1

Table 2.

PART NUMBER		PART NAME	QTY
PREVIOUS	NEW		
	00451-00001-LBL	Authorized Modifications Labels	1

NOTE

Authorized Modifications Labels may be ordered in packages of 25 from the Materials Distribution Center (MDC) through *Dealer Daily – Parts – Dealer Support Materials Orders*.

Transaxle Assembly and ECM (PCM) Software Confirmation

Required Tools & Equipment

REQUIRED EQUIPMENT	SUPPLIER	PART NUMBER	QTY
Techstream ADVi*	ADE	TSADVUNIT	1
Techstream 2.0		TS2UNIT	
Techstream Lite		TSLITEPDLR01	
Techstream Lite (Green Cable)		TSLP2DLR01	

*Essential SST.

NOTE

- Only ONE of the Techstream units listed above is required.
- Software version 15.30.027 or later is required.
- Additional Techstream units may be ordered by calling Approved Dealer Equipment (ADE) at 1-800-368-6787.
- Use Techstream or an approved J2534 interface to perform flash reprogramming updates. Visit techinfo.toyota.com for more information regarding J2534 reprogramming.

SPECIAL SERVICE TOOLS (SST)	PART NUMBER	QTY
Battery Diagnostic Tool*	DCA-8000P T	1

*Essential SST.

NOTE

Additional SSTs may be ordered by calling 1-800-933-8335.

NOTE

- The battery diagnostic tool MUST be used in Power Supply Mode to maintain battery voltage at 13.5V while flash reprogramming the vehicle.
- For details on how to use the battery diagnostic tool, refer to the [DCA-8000 Instruction Manual](#) located at *TIS – Diagnostics – Tools & Equipment – Battery Diagnostics*.

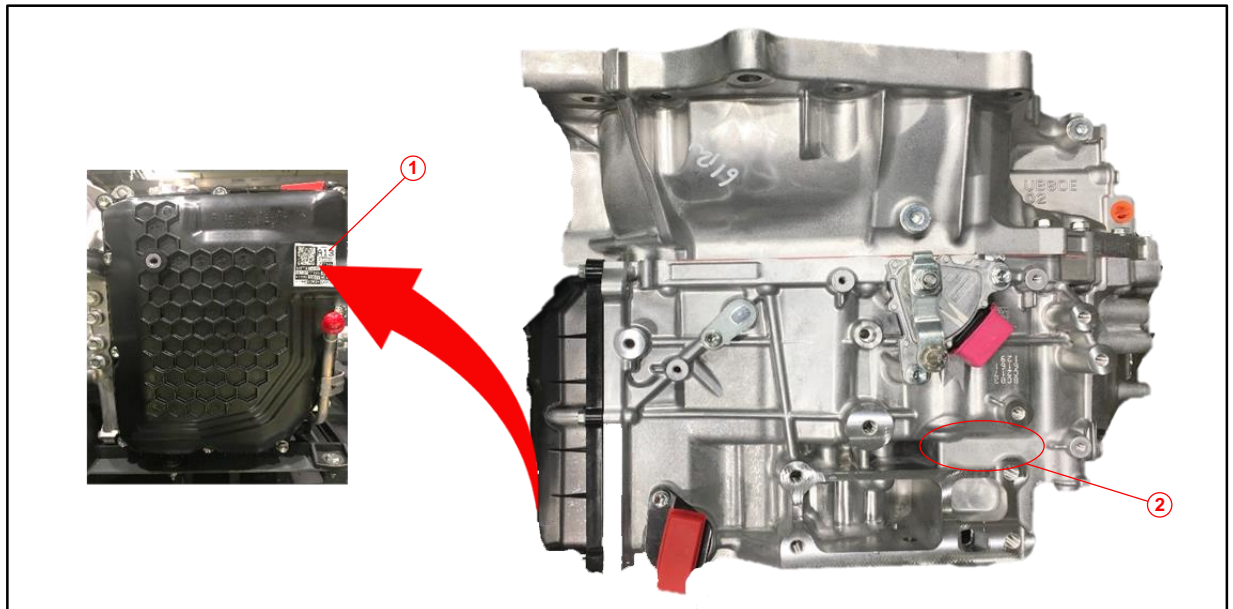
Transaxle Assembly and ECM (PCM) Software Confirmation

Production Change Confirmation Procedure

Confirmation by Production Change Effective Serial Number

1. Locate the transaxle serial number, found on the sticker located on the transaxle assembly side cover or on the engraved location as shown. Serial number decoders are also provided below.

Figure 1. Serial Number Sticker and Engraved Serial Number Location



1	Serial Number Sticker
2	Engraved Serial Number Location

Figure 2. AW Plant Serial Number Decoder

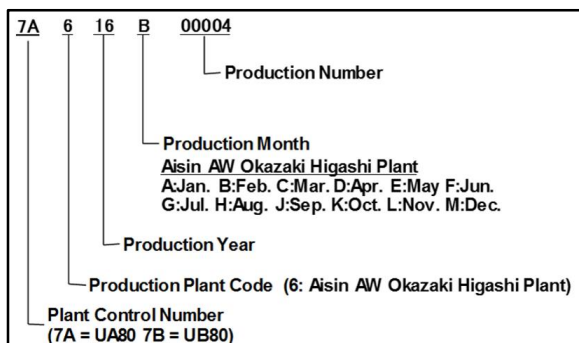
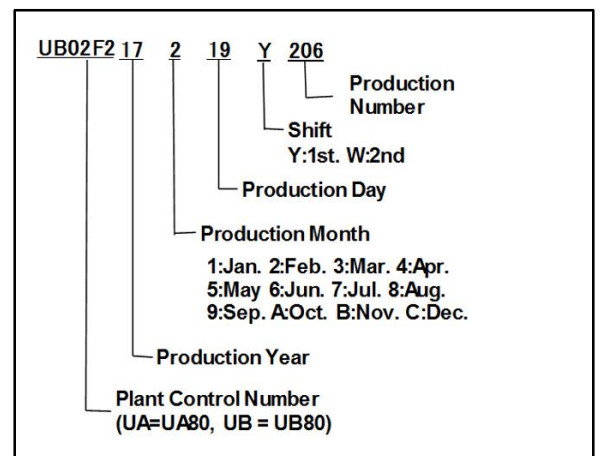


Figure 3. Kinuura Plant Serial Number Decoder

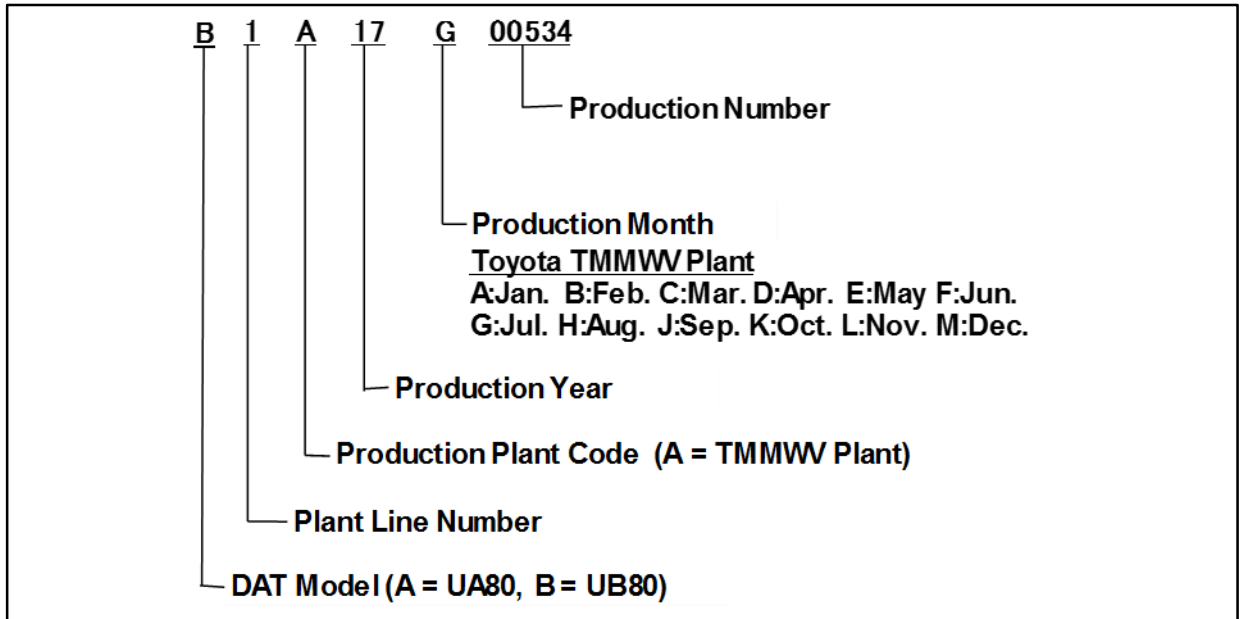


Transaxle Assembly and ECM (PCM) Software Confirmation

Production Change Confirmation Procedure (continued)

Confirmation by Production Change Effective Serial Number (continued)

Figure 4. TMMWV Plant Serial Number Decoder



- Use the table below to determine if the vehicle has a transaxle assembly produced before or after the production change effective serial numbers.

This bulletin applies to vehicles equipped with both old AND new type UB80/UA80* transmissions. Use Table 3 below to determine what type of (B1 clutch) is installed.

For units built BEFORE the production change effective serial numbers shown below, use the table in the Calibration information section to determine the correct calibration file to use based on transmission identification information.

Table 3.

PLANT	PRODUCTION CHANGE EFFECTIVE SERIAL NUMBER
AW	7B617J24024 7A617M22012
Kinuura	UB#####17919Y206 UA#####17C21Y206
TMMWV 1	B1A17K10678
TMMWV 2	B2A17K10697
AWTEC (REMAN)	17AZ0612P

Using the judgement from the table above, refer to the Engine Control Computer (ECM/PCM) Replacement Information and Calibration Information sections.

Transaxle Assembly and ECM (PCM) Software Confirmation

Engine Control Computer (ECM/PCM) Replacement Information

Based on the judgment of the transaxle serial number, use Table 4 below to ensure that the correct ECM (PCM) is installed or ordered for ANY replacements needed.

Table 4.

JUDGMENT	PLANT	ENGINE	PART NUMBER	
			PREVIOUS	NEW
Before	Tsutsumi	4L	89661-33T40 89661-33T41 89661-33T42	89661-33T30
			89661-06X50 89661-06X51 89661-06X52	89661-06Y00
	TMMK	V6	89661-06Y20 89661-06Y21 89661-06Y22	89661-06Y23
			89661-33T40 89661-33T41 89661-33T42	89661-33T43
After	Tsutsumi	4L	89661-06X50 89661-06X51 89661-06X52	89661-06X53
			TMMK	V6

Transaxle Assembly and ECM (PCM) Software Confirmation

Calibration Information

Based on the judgment of the transaxle serial number, use the table below to ensure the correct calibration file is used for ANY ECM (PCM) reprogramming procedures being performed.

JUDGMENT	ENGINE	ECU TYPE	CALIBRATION ID	
			PREVIOUS	NEW
Before	A25A-FKS	Engine	8966333P4300 8966333P4200 8966333P4100 8966333P4000 8966333P3100 8966333P3000	8966333P3200/ 896653356100
		Transmission	896653379100 896653379000 896653356000	
	2GR-FKS	Engine	8966306L5200 8966306L5100 8966306L5000	8966306L5300/ 896650644100
		Transmission	896650644000	
After	A25A-FKS	Engine	8966333P4500 8966333P4400 8966333P4300 8966333P4200 8966333P4100 8966333P4000	8966333P4600/ 896653379300
		Transmission	896653379200 896653379100 896653379000	
	2GR-FKS	Engine	8966306L4200 8966306L4100 8966306L4000	8966306L4300/ 896650654100
		Transmission	896650654000	

Transaxle Assembly and ECM (PCM) Software Confirmation

Repair Procedure

1. Does the ATM (B1 clutch) type match the ECM (PCM) hardware?
 - **YES** — Go to step 3.
 - **NO** — Continue to step 2.

2. Replace the ECM (PCM) hardware with the latest correct part and then go to step 6.
Refer to TIS, applicable model and model year Repair Manual:
 - 2018 Camry:
*PowerSource/Network – Networking – “Networking: Network Gateway ECU:
[Removal](#) / [Installation](#)”*

Transaxle Assembly and ECM (PCM) Software Confirmation

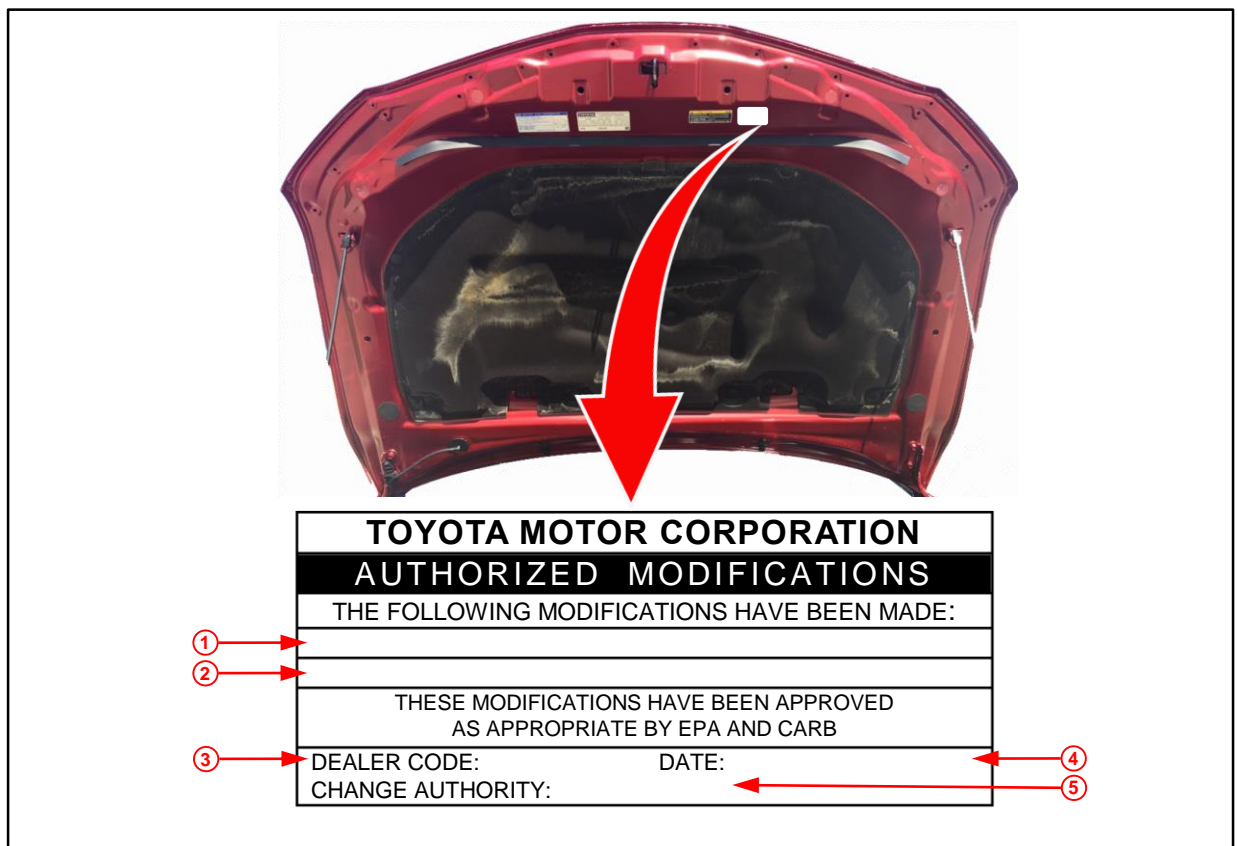
Repair Procedure (continued)

- Check for the Authorized Modifications Label affixed to the vehicle in the applicable location shown below in Figure 5.

Is the calibration ID listed the latest ECM (PCM) calibration?

- YES** — This bulletin does NOT apply. Continue diagnosis using the applicable Repair Manual.
- NO** — Continue to step 4.

Figure 5. Location of Authorized Modifications Label for 2018 Camry



1	Replacement ECM (PCM) Part Number (e.g., 89661-33T30)
2	New Calibration ID (e.g., 8966333P3000)
3	Dealer Code

4	Date Completed
5	This SB Number

Transaxle Assembly and ECM (PCM) Software Confirmation

Repair Procedure (continued)

4. Flash reprogram the ECM (PCM).

NOTE

- The battery diagnostic tool **MUST** be used in Power Supply Mode to maintain battery voltage at 13.5V while flash reprogramming the vehicle.
- For details on how to use the battery diagnostic station, refer to the [DCA-8000 Instruction Manual](#) located at *TIS – Diagnostics – Tools & Equipment – Battery Diagnostics*.

Follow the procedures outlined in Service Bulletin No. [T-SB-0134-16](#) *Techstream ECU Flash Reprogramming Procedure*, and flash the ECM (PCM) with the NEW calibration file update.

5. Prepare and install the Authorized Modifications Label.

A. Using a permanent marker, enter the following information on the label:

- ECM (PCM) part number [Refer to the **Parts Information** section for *the NEW PART NUMBER*].
- Calibration ID [Refer to the **Calibration Information** section for the **NEW CALIBRATION ID**].
- Dealer Code.
- Repair Date.
- Change Authority [***This bulletin number***].

B. Affix the Authorized Modifications Label to the vehicle at the location shown in Figure 5. The Authorized Modifications Label is available through the MDC, P/N 00451-00001-LBL.

6. Test-drive the vehicle to confirm proper vehicle operation.