

MIL ON With DTC P261093

Service Category Engine/Hybrid System

Section Engine Control

Market USA

Toyota Supports
ASE Certification 

Applicability

YEAR(S)	MODEL(S)	ADDITIONAL INFORMATION
2018	Camry, Camry HV	
2017 - 2018	Prius Prime, Sienna	
2016 - 2018	Prius, Tacoma	

REVISION NOTICE

December 11, 2020 Rev1:

- The entire bulletin has been updated.

Any previous printed versions of this bulletin should be discarded.

Introduction

Some 2016 – 2018 model year Prius and Tacoma, 2017 – 2018 model year Prius Prime and Sienna, and 2018 model year Camry and Camry Hybrid vehicles may exhibit a MIL ON condition with Diagnostic Trouble Code (DTC) P261093 (ECM/PCM Engine Off Timer Performance No Operation) present. The Engine Control Module (ECM) (SAE term: Powertrain Control Module/PCM) logic has been modified to reduce the possibility of this condition. Follow the Repair Procedure in this bulletin to address this condition.

MIL ON With DTC P261093

Warranty Information

OP CODE	DESCRIPTION	TIME	OFF	T1	T2
800269	Reprogram ECM (PCM)	0.7	89661-#####*	8A	99

*Warranty claim MUST be submitted with the correct 10-digit OFFP. Choose the correct OFFP for the vehicle being repaired.

NOTE

- For Sienna vehicles ONLY:
Due to a hardware change, refer to [T-SB-0001-18](#), *Transaxle Assembly and ECM (PCM) Software Confirmation* to determine the correct OFFP.
- For Camry vehicles ONLY:
Due to a hardware change, refer to [T-SB-0010-18](#), *Transaxle Assembly and ECM (PCM) Software Confirmation* to determine the correct OFFP.

APPLICABLE WARRANTY

- This repair is covered under the Toyota Federal Warranty. This warranty is in effect for 96 months or 80,000 miles, whichever occurs first, from the vehicle's in-service date.
- For 2004 – 2017 model year Prius and Prius Prime vehicles that are registered and normally operated in California, Arizona (2012 model year only), Connecticut (starting with 2005 model year), Maine (starting with 2004 model year), Maryland (starting with 2011 model year), Massachusetts (starting with 2004 model year), New Hampshire (2005 model year – 2009 model year only), New Jersey (starting with 2005 model year), New Mexico (2010 model year – 2011 model year only), New York (beginning with 2004 model year with ZE models only; all models starting with 2016 model year), Oregon (starting with 2008 model year), Rhode Island (starting with 2005 model year), and Vermont (starting with 2004 model year) – Partial Zero Emission Vehicle (PZEV) Emission Warranty Coverage is in effect for 15 years or 150,000 miles, from the vehicle's in-service date, whichever occurs first. (Please reference Warranty Policy Bulletin POL14-09 for additional information).
- Warranty application is limited to occurrence of the specified condition described in this bulletin.

MIL ON With DTC P261093

Parts Information

Table 1. Sienna

MODEL YEAR	DRIVETRAIN	TIMING	PART NUMBER		PART NAME	QTY
			PREVIOUS	NEW		
2017	2WD	Before Hardware Change*	89661-08160	89661-08167	Computer, Engine Control (ECM)	-
			89661-08163			
	89661-08164					
	89661-08165					
2017	4WD	After Hardware Change*	89661-08530	89661-08532		
			Before Hardware Change*	89661-08440		
	89661-08443					
	89661-08444					
89661-08445						
2018	2WD	After Hardware Change*	89661-08540	89661-08542		
			Before Hardware Change*	89661-08400	89661-08402	
	4WD	After Hardware Change*		88961-08580	89661-08582	
			Before Hardware Change*	89661-08460	89661-08462	
89661-08590	89661-08592					

*To determine whether the vehicle is before or after hardware change, reference [T-SB-0001-18](#), *Transaxle Assembly and ECM (PCM) Software Confirmation*.

MIL ON With DTC P261093

Parts Information (continued)

Table 2. Camry

MODEL YEAR	ENGINE	TIMING	PART NUMBER		PART NAME	QTY
			PREVIOUS	NEW		
2018	A25A-FKS	Before Hardware Change* (NAP)	89661-06X50	89661-06Y02	Computer, Engine Control (ECM)	-
			89661-06X51			
		89661-06X52				
		89661-06Y00				
	After Hardware Change* (NAP)	89661-06Y01				
		89661-06X50	89661-06X55			
Before Hardware Change* (JPP)	89661-06X51					
	89661-06X52					
89661-06X53						
89661-06X54						
After Hardware Change* (JPP)	89661-33T40	89661-33T35				
	89661-33T41					
Before Hardware Change* (JPP)	89661-33T42					
	89661-33T30					
After Hardware Change* (JPP)	89661-33T31					
	89661-33T40	89661-33T48				
89661-33T41						
Before Hardware Change* (JPP)	89661-33T42					
	89661-33T43					
After Hardware Change* (JPP)	89661-33T44					
	89661-06Y20-A	89661-06Y23				
Before Hardware Change* (JPP)						
2GR-FKS	After Hardware Change* (JPP)	89661-0X170	89661-0X173			

*To determine whether the vehicle is before or after hardware change, reference [T-SB-0010-18](#), *Transaxle Assembly and ECM (PCM) Software Confirmation*.

MIL ON With DTC P261093

Parts Information (continued)

Table 3. Camry HV, Prius Prime, Prius, and Tacoma

MODEL	YEAR	ENGINE	DRIVETRAIN	PART NUMBER		PART NAME	QTY
				PREVIOUS	NEW		
Camry HV	2018	A25A-FXS	2WD Lithium-ion	89661-06N40 89661-06N41 89661-06N42	89661-06N44	Computer, Engine Control (ECM)	-
			2WD Nickel-metal Hydride	89661-0X280 89661-0X281	89661-0X283		
Prius Prime	2017 – 2018	2ZR-FXE	2WD	89661-47750	89661-47751		
Prius	2016 – 2018		2WD Nickel-metal Hydride	89661-47640 89661-47641 89661-47642	89661-47643		
			2WD Lithium-ion	89661-47650 89661-47651 89661-47652	89661-47653		
Tacoma	2016 – 2017	2GR-FKS	2WD/4WD	89661-04K53 89661-04K52 89661-04K51 89661-04K50	89661-04K55		
			4WD	89661-04K62 89661-04K61 89661-04K60	89661-04K63		
			2WD/4WD	89661-04K71-A 89661-04K70	89661-04K71-B		
	2018		2WD/4WD	89661-04K20-A	89661-04K22		
			4WD	89661-04K30	89661-04K32		
			2WD/4WD	89661-04K40-A	89661-04K40-B		
-				00451-00001-LBL	Authorized Modifications Labels	1	

NOTE

- The ECM (PCM) should NOT be replaced as part of the Repair Procedure.
- Authorized Modifications Labels may be ordered in packages of 25 from the Materials Distribution Center (MDC) through *Dealer Daily – Parts – Dealer Support Materials Orders*.

MIL ON With DTC P261093

Required Tools & Equipment

REQUIRED EQUIPMENT	SUPPLIER	PART NUMBER	QTY
Techstream ADVi*	ADE	TSADVUNIT	1
Techstream 2.0		TS2UNIT	
Techstream Lite		TSLITEPDLR01	
Techstream Lite (Green Cable)		TSLP2DLR01	

*Essential SST.

NOTE

- Only ONE of the Techstream units listed above is required.
- Software version 15.30.027 or later is required.
- Additional Techstream units may be ordered by calling Approved Dealer Equipment (ADE) at 1-800-368-6787.
- Use Techstream or an approved J2534 interface to perform flash reprogramming updates. Visit techinfo.toyota.com for more information regarding J2534 reprogramming.

SPECIAL SERVICE TOOLS (SST)	PART NUMBER	QTY
Battery Diagnostic Tool*	DCA-8000P T	1

*Essential SST.

NOTE

Additional SSTs may be ordered by calling 1-800-933-8335.

NOTE

- The battery diagnostic tool MUST be used in Power Supply Mode to maintain battery voltage at 13.5V while flash reprogramming the vehicle.
- For details on how to use the battery diagnostic tool, refer to the [DCA-8000 Instruction Manual](#) located at *TIS – Diagnostics – Tools & Equipment – Battery Diagnostics*.

Calibration Information

MODEL	MODEL YEAR	ENGINE	DRIVETRAIN	ECU TYPE	CALIBRATION ID	
					PREVIOUS	NEW
Camry HV	2018	A25A-FXS	2WD Lithium-ion	Engine	8966306B2100 8966306B2200 8966306B2300	8966306B2400
			2WD Nickel-metal Hydride		8966306N8100 8966306N8200	8966306N8300

MIL ON With DTC P261093

Calibration Information (continued)

MODEL	MODEL YEAR	ENGINE	DRIVETRAIN	ECU TYPE	CALIBRATION ID				
					PREVIOUS	NEW			
Prius Prime	2017 – 2018	2ZR-FXE	2WD	Engine	896634768000	896634768100			
Prius	2016 – 2018	2ZR-FXE	2WD Nickel-metal Hydride		896634759000 896634759100 896634759200	896634759300			
			2WD Lithium-ion		896634760000 896634760100 896634760200	896634760300			
Tacoma	2016 – 2017	2GR-FKS	2WD/4WD		Transmission	8966304B0300 8966304B0200 8966304B0100 8966304B0000	8966304B0400		
						4WD	Engine	896650401000 896650401100 896650401200 896650401300	896650401400
								Engine	8966304B1200 8966304B1100 8966304B1000
						2WD/4WD	Transmission		8966304B2400 8966304B2300 8966304B2200 8966304B2100 8966304B2000
			Transmission		896650403000 896650403100 896650403200 896650403300			896650403400	
					2018	Engine	Transmission	8966304A6000	8966304A6100
	896650404000		896650404100						
	4WD		Engine	8966304A7000		8966304A7100			
	2WD/4WD			8966304A8000		8966304A8100			
	Transmission		896650406000	896650406100					

MIL ON With DTC P261093

Calibration Information (continued)

MODEL	MODEL YEAR	ENGINE	DRIVETRAIN	TIMING	ECU TYPE	CALIBRATION ID	
						PREVIOUS	NEW
Camry	2018	A25A-FKS	2WD	Before Hardware Change* (NAP)	Engine	8966333P4300	8966333P3200*
						8966333P4200	
				8966333P4100			
				8966333P4000			
8966333P3000							
8966333P3100							
					Transmission	896653379100	896653356100*
						896653379000	
896653356000							
					Engine	8966333P4500	8966333P4600*
						8966333P4400	
				8966333P4300			
				8966333P4200			
8966333P4100							
8966333P4000							
8966333P3000							
8966333P3100							
8966333P3200							
					Transmission	896653379200	896653379300*
						896653379100	
896653379000							
896653356000							
896653356100							

*To determine whether the vehicle is before or after hardware change, reference [T-SB-0010-18](#), *Transaxle Assembly and ECM (PCM) Software Confirmation*.

MIL ON With DTC P261093

Calibration Information (continued)

MODEL	MODEL YEAR	ENGINE	DRIVETRAIN	TIMING	ECU TYPE	CALIBRATION ID	
						PREVIOUS	NEW
Camry	2018	A25A-FKS	2WD	Before Hardware Change* (JPP)	Engine	8966333P4300	8966333P3200*
						8966333P4200	
						8966333P4100	
				8966333P4000			
				8966333P3000			
				8966333P3100			
		Transmission		896653379100	896653356100*		
				896653379000			
				896653356000			
		After Hardware Change* (JPP)		Engine	8966333P4500	8966333P4600*	
					8966333P4400		
					8966333P4300		
8966333P4200							
8966333P4100							
8966333P4000							
Transmission	896653379200	896653379300*					
	896653379100						
	896653379000						
Before Hardware Change*	Engine	8966306L5000	8966306L5200*				
		8966306L5100					
Transmission	896650644000	896650644100*					
	896650644000						
After Hardware Change*	Engine	8966306L4000	8966306L4200*				
		8966306L4100					
Transmission	8966306L5000	8966306L5200*					
	8966306L5100						
8966306L5200	896650644000	896650644000*					

*To determine whether the vehicle is before or after hardware change, reference [T-SB-0010-18](#), *Transaxle Assembly and ECM (PCM) Software Confirmation*.

MIL ON With DTC P261093

Calibration Information (continued)

MODEL	MODEL YEAR	ENGINE	DRIVETRAIN	TIMING	ECU TYPE	CALIBRATION ID	
						PREVIOUS	NEW
Sienna	2017	2GR-FKS	2WD	Before Hardware Change*	Engine	896630828000 896630828300 896630828400 896630828500	896630828600*
					Transmission	896650807000 896650807100	896650807200*
				After Hardware Change*	Engine	896630828000 896630828300 896630828400 896630828500 896630828600 896630846000	896630846100*
					Transmission	896650807000 896650807100 896650807200	896650819000*
			4WD	Before Hardware Change*	Engine	896630836000 896630836300 896630836400 896630836500	896630836600*
					Transmission	896650808000 896650808100	896650808200*
				After Hardware Change*	Engine	896630836000 896630836300 896630836400 896630836500 896630836600 896630847000	896630847100*
					Transmission	896650808000 896650808100 896650808200	896650820000*

*To determine whether the vehicle is before or after hardware change, reference [T-SB-0001-18](#), *Transaxle Assembly and ECM (PCM) Software Confirmation*.

MIL ON With DTC P261093

Calibration Information (continued)

MODEL	MODEL YEAR	ENGINE	DRIVETRAIN	TIMING	ECU TYPE	CALIBRATION ID	
						PREVIOUS	NEW
Sienna	2018	2GR-FKS	2WD	Before Hardware Change*	Engine	896630832000	896630832100*
					Transmission	896650811100*	
				After Hardware Change*	Engine	896630832000 896630832100 896630851000	896630851100*
					Transmission	896650811000 896650823000	896650823100*
			4WD	Before Hardware Change*	Engine	896630838000	896630838100*
					Transmission	896650812000*	
				After Hardware Change*	Engine	896630838000 896630838100 896630852000	896630852100*
					Transmission	896650812000 896650824000	896650824100*

*To determine whether the vehicle is before or after hardware change, reference [T-SB-0001-18](#), *Transaxle Assembly and ECM (PCM) Software Confirmation*.

Repair Procedure

1. Confirm the condition exists.
Does the vehicle exhibit a MIL ON condition with DTC P261093 present?
 - **YES** — Continue to step 2.
 - **NO** — This bulletin does NOT apply. Continue diagnosis using the applicable Repair Manual.
2. Is the vehicle a Camry or a Sienna model?
 - **YES** — Continue to step 3.
 - **NO** — For Prius, Tacoma, Prius Prime, and Camry Hybrid model vehicles go to step 4.
3. Follow the procedures outlined in the following bulletins:
 - For 2017 – 2018 Sienna model year vehicles follow the procedures outlined in Service Bulletin No. [T-SB-0001-18](#) *Transaxle Assembly and ECM (PCM) Software Confirmation*.
 - For 2018 Camry model year vehicles follow the procedures outlined in Service Bulletin No. [T-SB-0010-18](#) *Transaxle Assembly and ECM (PCM) Software Confirmation*.

MIL ON With DTC P261093

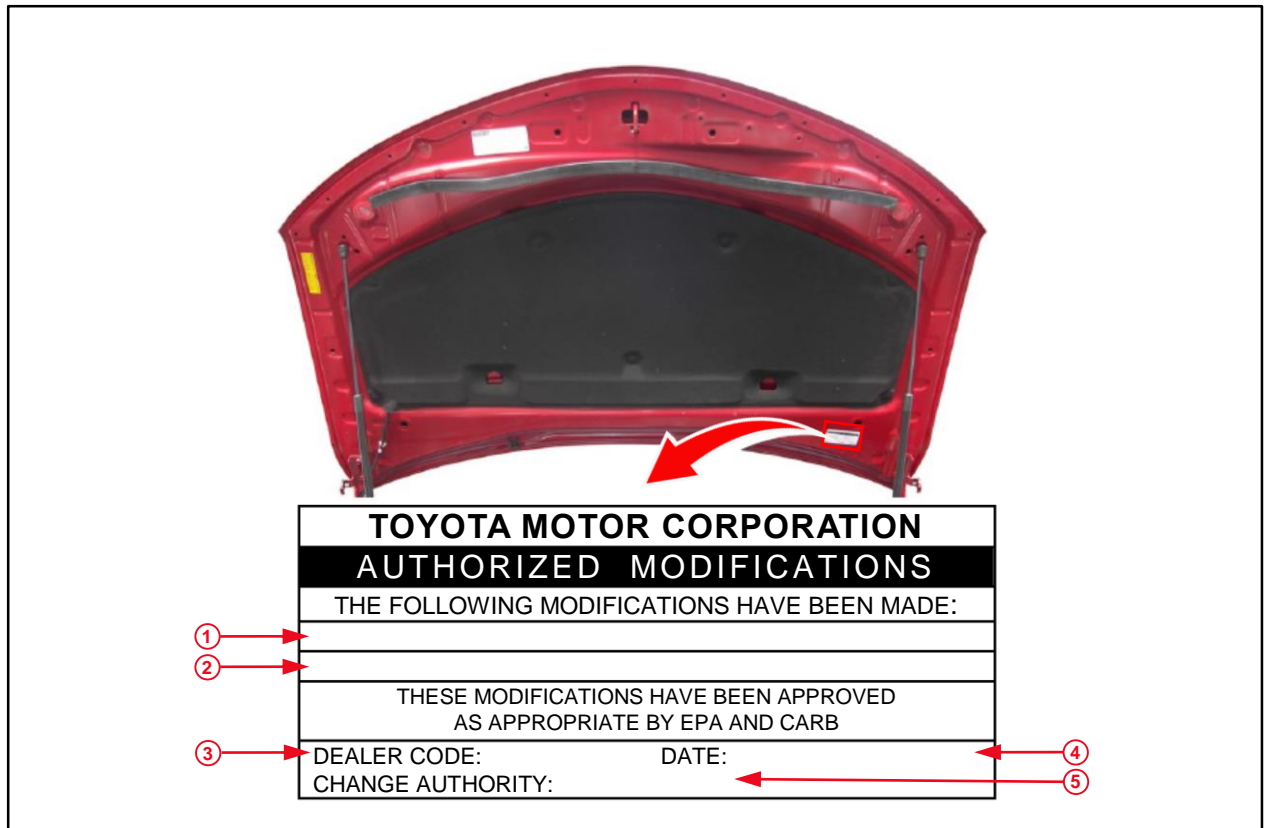
Repair Procedure (continued)

- Check for the Authorized Modifications Label affixed to the vehicle in the locations shown in Figures 1 – 3. Confirm if the ECM (PCM) calibration has been updated.

Is the calibration ID listed the latest ECM (PCM) calibration?

- YES** — This bulletin does NOT apply. Continue diagnosis using the applicable Repair Manual.
- NO** — Continue to step 5.

Figure 1. Location of Authorized Modifications Label on 2018 Camry HV



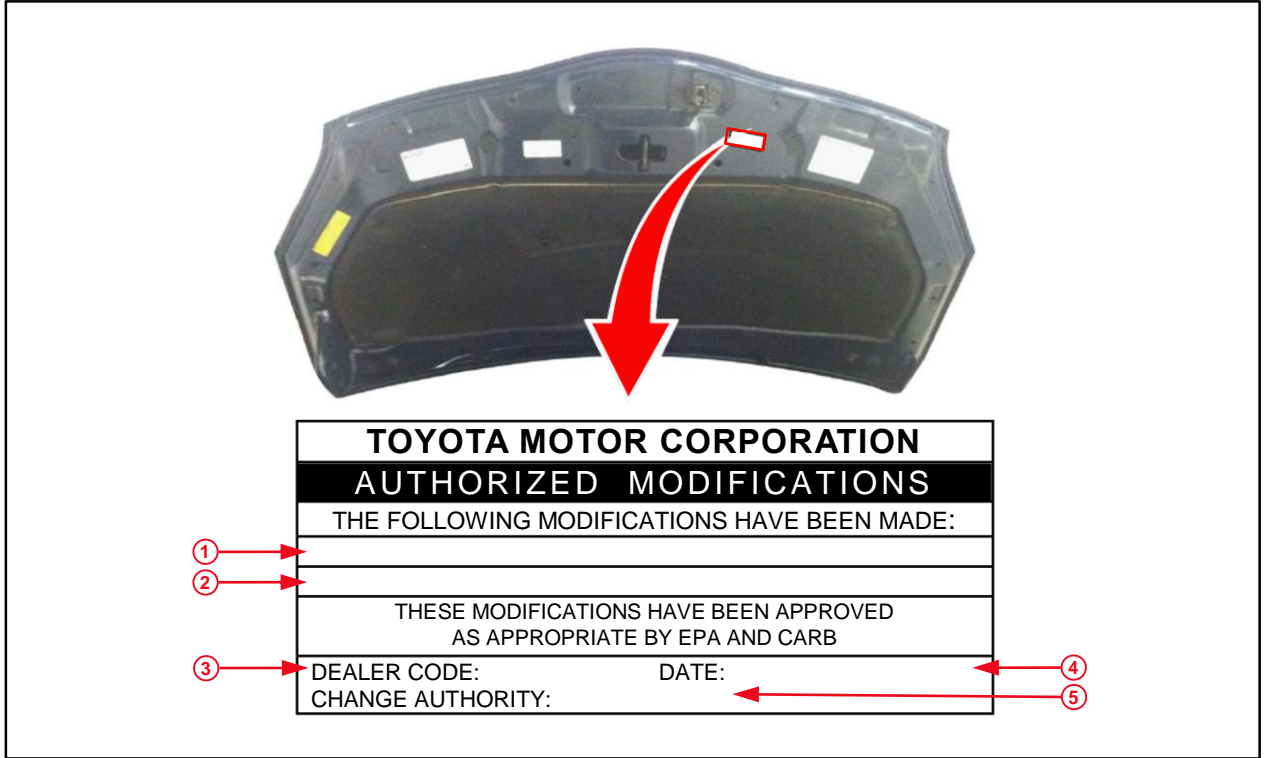
1	Replacement ECM (PCM) Part Number (e.g., 89661-06Y02)
2	New Calibration ID (e.g., 8966306B2400)
3	Dealer Code

4	Date Completed
5	This SB Number

MIL ON With DTC P261093

Repair Procedure (continued)

Figure 2. Location of Authorized Modifications Label on 2017 – 2018 Prius Prime and 2016 – 2018 Prius



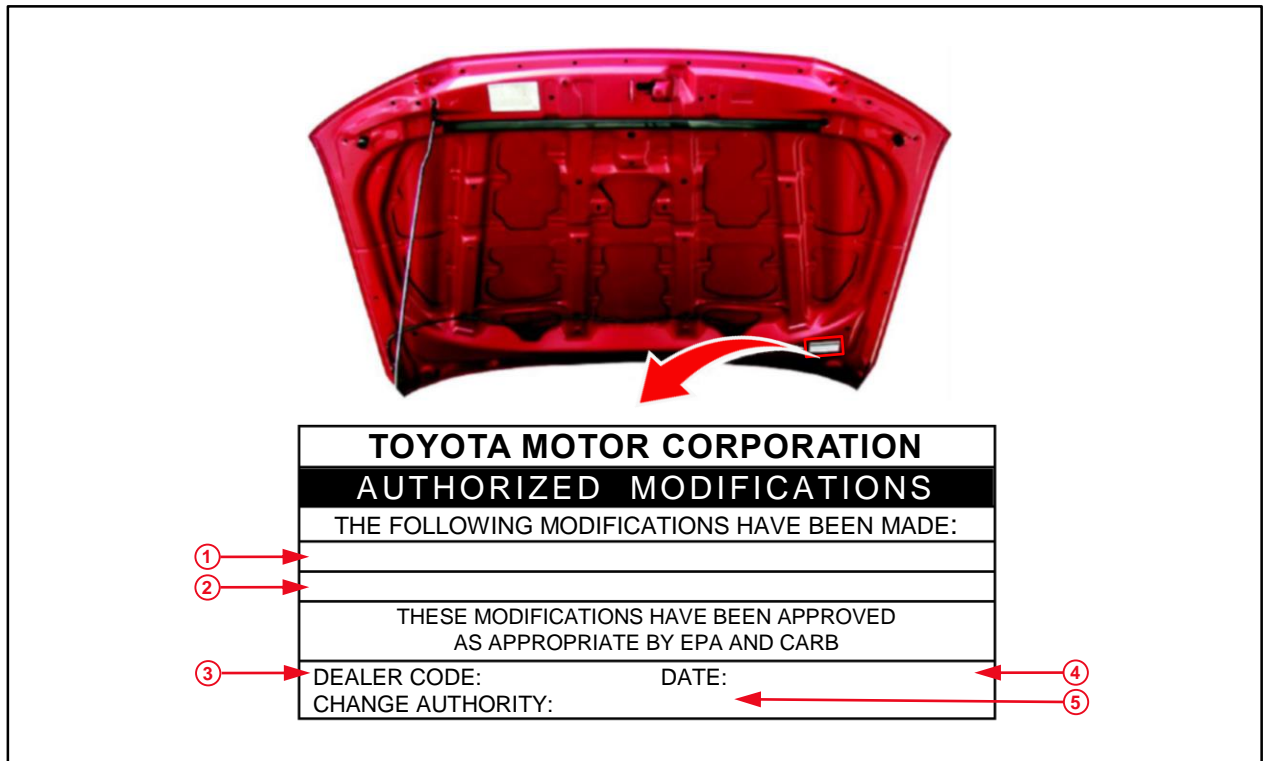
1	Replacement ECM (PCM) Part Number (e.g., 89661-47751)
2	New Calibration ID (e.g., 896634768100)
3	Dealer Code

4	Date Completed
5	This SB Number

MIL ON With DTC P261093

Repair Procedure (continued)

Figure 3. Location of Authorized Modifications Label on 2016 – 2018 Tacoma



1	Replacement ECM (PCM) Part Number (e.g., 89661-04K54)
2	New Calibration ID (e.g., 8966304B0400)
3	Dealer Code

4	Date Completed
5	This SB Number

5. Flash reprogram the ECM (PCM).

NOTE

- The battery diagnostic tool **MUST** be used in Power Supply Mode to maintain battery voltage at 13.5V while flash reprogramming the vehicle.
- For details on how to use the battery diagnostic station, refer to the [DCA-8000 Instruction Manual](#) located at *TIS – Diagnostics – Tools & Equipment – Battery Diagnostics*.

Follow the procedures outlined in Service Bulletin No. [T-SB-0134-16](#), *Techstream ECU Flash Reprogramming Procedure*, and flash the ECM (PCM) with the NEW calibration file update.

MIL ON With DTC P261093

Repair Procedure (Continued)

6. Prepare and install the Authorized Modifications Label.
 - A. Using a permanent marker, enter the following information on the label:
 - ECM part number [Refer to the **Parts Information** section for the **NEW PART NUMBER**].
 - Calibration ID(s) [Refer to the **Calibration Information** section for the **NEW CALIBRATION ID**].
 - Dealer Code.
 - Repair Date.
 - Change Authority [**This bulletin number**].
 - B. Affix the Authorized Modifications Label to the vehicle at the location shown in Figures 1 and 2. The Authorized Modifications Label is available through the MDC, P/N 00451-00001-LBL.

7. Test drive the vehicle to confirm proper vehicle operation.