

# Water Entry/Condensation in Rear Combination Lamp(s)

**Service Category** Vehicle Exterior

**Section** Lighting (ext)

**Market** USA

Toyota Supports  
 ASE Certification 

## Applicability

YEAR(S)	MODEL(S)	ADDITIONAL INFORMATION
2018 - 2019	Prius C	

## Introduction

Some 2018 – 2019 model year Prius C vehicles may exhibit water entry or condensation in one or both of the rear combination lamps. Follow the Repair Procedure in this bulletin to address this condition.

## Production Change Information

This bulletin applies to vehicles produced **BETWEEN** the Effective VINs shown below.

MODEL	PLANT	DRIVETRAIN	EFFECTIVE VIN
Prius C	TMEJ	2WD	JTDKDTB3#J1595834 – JTDKDTB3#K1619006

## Warranty Information

OP CODE	DESCRIPTION	TIME	OFP	T1	T2
EL1965	R & R Lens & Body, Rear Combination Lamp, RH	0.4	81551-52D61	66	57
EL1966	R & R Lens & Body, Rear Combination Lamp, LH	0.4	81561-52D61		
EL1967	R & R Lens & Body Rear Combination Lamps BOTH sides	0.8	81551-52D61 81561-52D61		

### APPLICABLE WARRANTY

- This repair is covered under the Toyota Basic Warranty. This warranty is in effect for 36 months or 36,000 miles, whichever occurs first, from the vehicle's in-service date.
- Warranty application is limited to occurrence of the specified condition described in this bulletin.

## Water Entry/Condensation in Rear Combination Lamp(s)

### Parts Information

PART NUMBER		PART NAME	QTY
PREVIOUS	NEW		
81551-52D61	04000-31152	Lens and Body, Rear Combination Lamp, RH	1
81561-52D61	04000-31252	Lens and Body, Rear Combination Lamp, LH	1

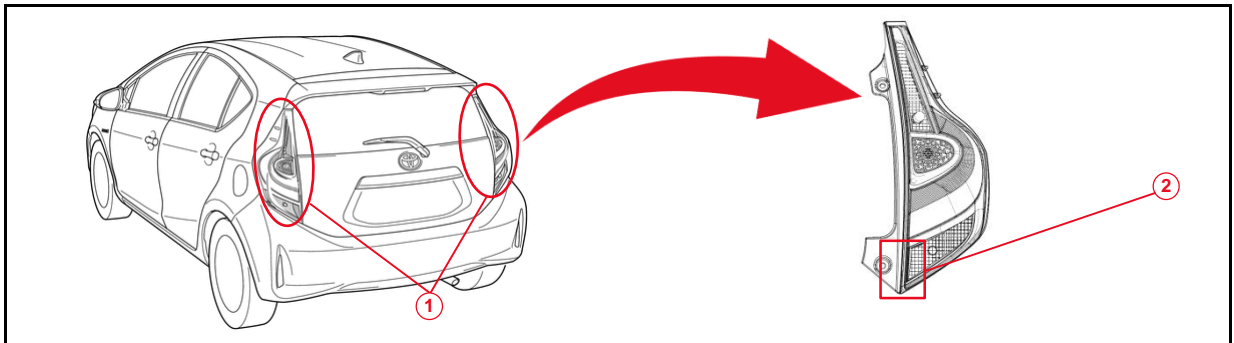
### Repair Procedure

1. Confirm the condition exists.

Is water entry or condensation found in one or both rear combination lamps as shown in Figures 1 and 2?

- **YES** — Go to step 3.
- **NO** — Continue to step 2.

**Figure 1.**



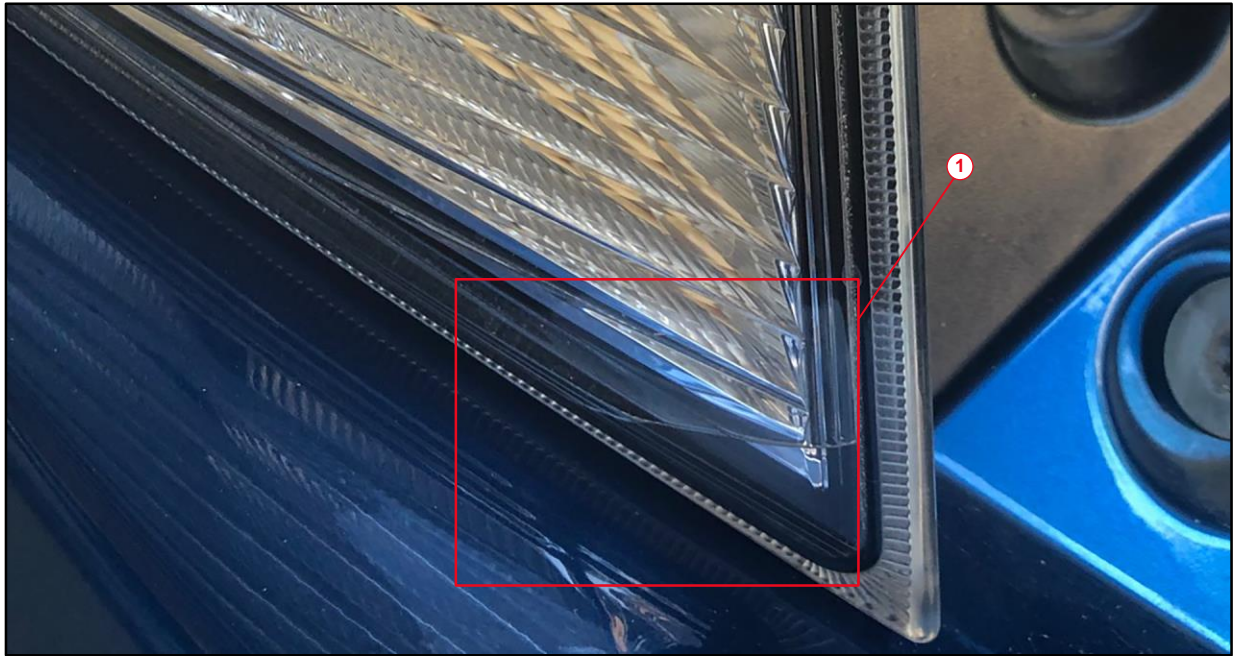
<b>1</b>	Rear Combination Lamps
<b>2</b>	Location of Water Intrusion in Rear Combination Lamps

## Water Entry/Condensation in Rear Combination Lamp(s)

---

### Repair Procedure (continued)

**Figure 2. Closeup of Rear Combination Lamps**



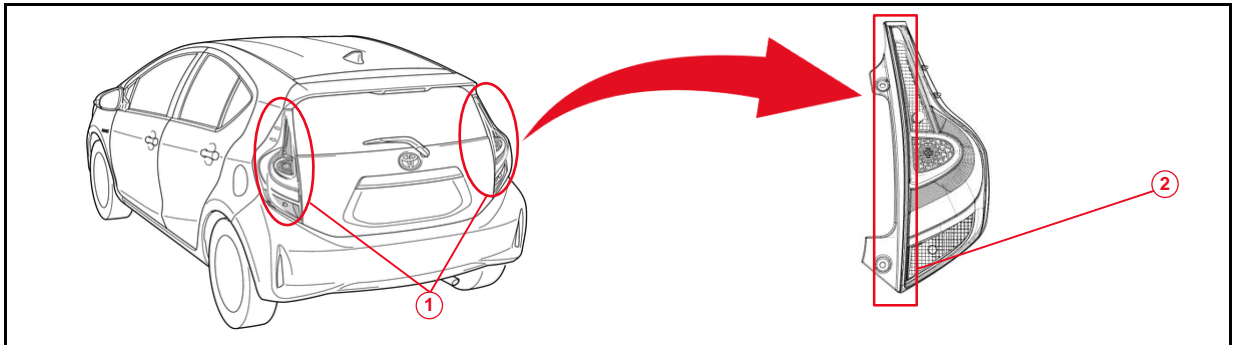
1	Example of Water Sitting at the Bottom of the Lens
---	--

2. Perform a visual inspection of rear combination lamps for cracks in the seam.  
Is there a crack in the rear combination lamps seam(s) as shown in Figures 3 and 4?
  - **YES** — Continue to step 3.
  - **NO** — This bulletin does NOT apply.  
Continue diagnosis using the applicable Repair Manual.

## Water Entry/Condensation in Rear Combination Lamp(s)

### Repair Procedure (continued)

**Figure 3.**



<b>1</b>	<b>Rear Combination Lamps</b>
<b>2</b>	<b>Crack Along This Area of Housing</b>

**Figure 4.**



<b>1</b>	<b>Example of a Crack in the Lens Housing</b>
----------	---

## Water Entry/Condensation in Rear Combination Lamp(s)

---

### Repair Procedure (continued)

3. Remove the affected rear combination lamp(s).

Refer to TIS, applicable model and model year Repair Manual:

- 2018 – 2019 Prius C:

*Vehicle Exterior – Lighting (ext)* – [“Lighting \(ext\): Rear Combination Light Assembly: Removal”](#)

4. Install NEW rear combination lamp(s).

Refer to TIS, applicable model and model year Repair Manual:

- 2018 – 2019 Prius C:

*Vehicle Exterior – Lighting (ext)* – [“Lighting \(ext\): Rear Combination Light Assembly: Installation”](#)

5. Visually confirm the condition no longer exists.

6. Test-drive the vehicle to confirm proper operation of rear combination lamp(s).