

Service Alert

Mazda North American Operations
Irvine, CA 92618-2922



| | |
|--|-------------------------------------|
| Subject: 2019-2021 MAZDA3 SERVICE CAUTIONS FOR NEW AND REVISED FEATURES | Service Alert No.: SA-012/20 |
| | Last Issued: 12/15/2020 |

BULLETIN NOTES

This Service Alert supersedes the previously issued Service Alert(s) listed below: The changes are noted in Red.

| Previous Service Alert(s): | Date(s) Issued: |
|----------------------------|--|
| SA-012/20 | 06/16/20, 05/18/20, 02/28/20, 02/04/20, 01/24/20 and 01/15/20 |
| SA-010/19 | 09/16/19, 08/14/19, 08/06/19, 07/19/19, 07/12/19, 06/13/19, 06/07/19, 05/09/19, 05/02/19, 04/25/19, 04/11/19, 03/29/19, 03/21/19, 03/15/19, 03/08/19, 03/06/19, 03/05/19, 02/25/19 |

APPLICABLE MODEL(S)/VINS

2019-2021Mazda3

DESCRIPTION

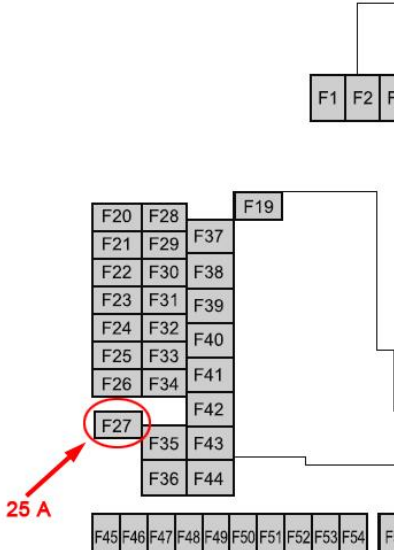
The 2019-2020 Mazda3 has new and revised features that are different from previous models, and may be difficult to understand. This Service Alert provides valuable information to support potential dealer and customer concerns.

Index

- [PDI fuse](#)
- [Connected Vehicle \(2020 Mazda3\)](#)
- [Connected Vehicle Maintenance Mode\(2020 Mazda3\)](#)
- [Mazda Connected Vehicle Viewer \(MCVV\) \(2020 Mazda3\)](#)
- [Apple CarPlay™ / Android Auto™ Activation](#)
- [Blind Spot Monitoring System \(BSM\)](#)
- [Front Wiper Service Caution](#)
- [i-ACTIVSENSE Switch](#)
- [Traffic Sign Recognition \(TSR\)](#)
- [Excessive Speed Warning](#)

CONSUMER NOTICE: The information and instructions in this bulletin are intended for use by skilled technicians. Mazda technicians utilize the proper tools/equipment and take training to correctly and safely maintain Mazda vehicles. These instructions should not be performed by "do-it-yourselfers." Customers should not assume this bulletin applies to their vehicle or that their vehicle will develop the described concern. To determine if the information applies, customers should contact their nearest authorized Mazda dealership. Mazda North American Operations reserves the right to alter the specifications and contents of this bulletin without obligation or advance notice. All rights reserved. No part of this bulletin may be reproduced in any form or by any means, electronic or mechanical---including photocopying and recording and the use of any kind of information storage and retrieval system ---without permission in writing.

Traffic Jam Assist (2021 Mazda3)
 MAZDA CONNECT Power Function
 MAZDA CONNECT Center Display View
 In-Vehicle Digital Owner's Manual
 Navigation System
 SIRIUSXM Data Service
 Power Door Locks
 Walk-Away Auto Lock Function
 Auxiliary Key
 Transmitter Battery Saving Function
 Keyless Entry Using Auxiliary Key
 Rear Door Child Safety Locks Operation
 Theft-Deterrent System
 Link Seat & Climate Control Temperatures
 Seat Warmer Will Not Turn ON After Previous Usage
 Electric Parking Brake (EPB)
 Tire Pressure Monitoring System (TPMS)
 Condition Based Maintenance
 M-MDS (MDARS)
 Part Replacement

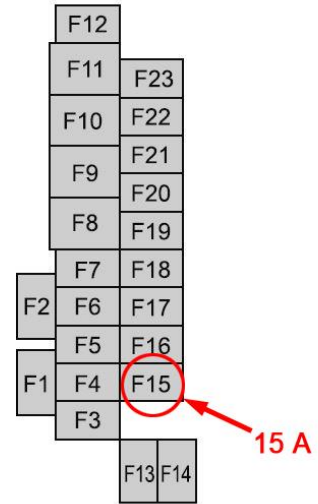
| Item | Service Information |
|--|--|
| <p>Fuse to be Installed at PDI (JM1 = Japan built)</p> <ol style="list-style-type: none"> There is only one fuse removed at the factory that should be installed at PDI. It is fuse F27 (25A). The fuse is stored in the lid of the fuse box with the spare fuses. | <p>Fuse Block (Engine Compartment)</p>  <p>Fuse Block</p> |
| <p>Fuse(s) to be Installed at PDI (3MZ = Mexico built)</p> <p>Most vehicles have only one fuse removed at the factory, but some vehicles have 2 fuses removed that must be installed at PDI.</p> <ol style="list-style-type: none"> All vehicles - Fuse F27 (25A) is removed from the engine compartment fuse block and is stored at the engine compartment fuse block lid. Some vehicles - Fuse F15 (15A) is removed from the interior fuse block left side (which controls the trunk lid opener) and is stored in the lower panel compartment on left side of the steering wheel. <p>Enable the trunk lid opener by installing the back door lock fuse into the fuse box located in the driver's footwell.</p> <ol style="list-style-type: none"> Open the driver's door. Locate the fuse box, which is along the bottom left side. Open the fuse box by holding the fuse box lid with the right hand | |

CONSUMER NOTICE: The information and instructions in this bulletin are intended for use by skilled technicians. Mazda technicians utilize the proper tools/equipment and take training to correctly and safely maintain Mazda vehicles. These instructions should not be performed by "do-it-yourselfers." Customers should not assume this bulletin applies to their vehicle or that their vehicle will develop the described concern. To determine if the information applies, customers should contact their nearest authorized Mazda dealership. Mazda North American Operations reserves the right to alter the specifications and contents of this bulletin without obligation or advance notice. All rights reserved. No part of this bulletin may be reproduced in any form or by any means, electronic or mechanical---including photocopying and recording and the use of any kind of information storage and retrieval system ---without permission in writing.

and pressing on the clip with the thumb to release the cover.
d. Remove the clip on the sides and carefully pull the lid out.
e. Locate the 15 amp blue colored fuse hidden in the lower panel compartment on the left side of the steering wheel.
f. Avoid touching the metal tabs of the fuse and carefully install the fuse into empty space F15. Space F15 can be verified by referencing the inside of the fuse box lid.
NOTE: Make sure the fuse is installed fully into position and flush with all of the other fuses.
g. Reinstall the fuse box lid in the reverse order of removal.
CAUTION: Wait a minimum of 5 seconds after installing Fuse F15 to open the trunk/liftgate. DTC B1277:14 may be stored and/or back-up lights may be inoperative if you do not wait.

NOTE: On some vehicles, fuse F13 (15A) is being removed instead of F15 at the factory. This causes the Commander switch to be inoperative.

(Left Side)



PDI Note:

Check for Connected Vehicle signal after installing room fuse. See the image for how the connectivity signal bar looks (it's the vertical stack bar on the right bottom corner). This connectivity signal bar is not displayed on the "Home" screen. Go into the "Entertainment" or "Navigation" menu to check it. To confirm it is working properly, the bar should be white like the image below.



CONSUMER NOTICE: The information and instructions in this bulletin are intended for use by skilled technicians. Mazda technicians utilize the proper tools/equipment and take training to correctly and safely maintain Mazda vehicles. These instructions should not be performed by "do-it-yourselfers." Customers should not assume this bulletin applies to their vehicle or that their vehicle will develop the described concern. To determine if the information applies, customers should contact their nearest authorized Mazda dealership. Mazda North American Operations reserves the right to alter the specifications and contents of this bulletin without obligation or advance notice. All rights reserved. No part of this bulletin may be reproduced in any form or by any means, electronic or mechanical---including photocopying and recording and the use of any kind of information storage and retrieval system ---without permission in writing.

Connected Vehicle (2020 Mazda3)

1. Connected Vehicle App remote requests below may take up to a minute to complete.

1. Engine Start
2. Engine Stop
3. Door Lock
4. Door Unlock
5. Quick Flash/Horn On
6. Hazard Off

2. Connected Vehicle App status is not updated in real time for the items below. Updates may take several minutes and may require a manual refresh.

1. Tire Pressure Status (last key cycle)
2. Doors
3. Trunk/Liftgate
4. Hood
5. Hazard Lights

NOTE: Tire pressures on the app are from the last time data was received before the ignition was turned off.

3. Multiple remote requests failure

1. Only a single request can be processed per minute.
2. Error messages are displayed if multiple requests are sent within 60 seconds.

Resources:

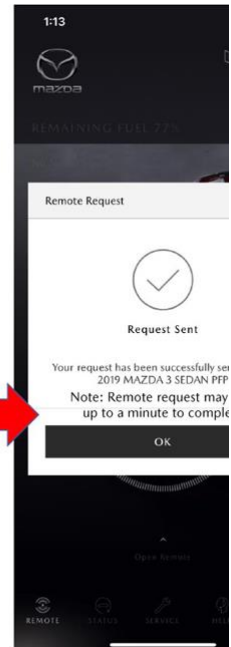
| Educational Videos | Other Resources |
|--|--|
| <ol style="list-style-type: none"> 1. Overview 2. MyMazda remote 3. Using MyMazda App 4. Vehicle Health Notifications 5. In-car Wi-Fi 6. Safety features | <p>MAZDA CONNECTED SERVICES FAQ MAZDA CONNECT and MAZDA CONNECT (see attachment) MAZDA CONNECTED VEHICLE VIEWER (S</p> |

Note: Vehicle Maintenance due data is pulled from the vehicles MAZDA CONNECT system. The customer can change the settings at: MAZDA CONNECT - Information - Vehicle Status Monitor - Vehicle Maintenance Settings.

Connected Vehicle Maintenance Mode (2020 Mazda3)

When vehicle is being serviced, switch to Restricted Transmitting

Remote Request



Vehicle Status



See SA-056/19 - CONNECTED VEHICLE MAINTENANCE MODE

CONSUMER NOTICE: The information and instructions in this bulletin are intended for use by skilled technicians. Mazda technicians utilize the proper tools/equipment and take training to correctly and safely maintain Mazda vehicles. These instructions should not be performed by "do-it-yourselfers." Customers should not assume this bulletin applies to their vehicle or that their vehicle will develop the described concern. To determine if the information applies, customers should contact their nearest authorized Mazda dealership. Mazda North American Operations reserves the right to alter the specifications and contents of this bulletin without obligation or advance notice. All rights reserved. No part of this bulletin may be reproduced in any form or by any means, electronic or mechanical---including photocopying and recording and the use of any kind of information storage and retrieval system ---without permission in writing.

Mode.
 Restricts MyMazda App remote functions.
 Prevents error messages being sent to the customer during vehicle service.
 Cancel Restricted Transmitting Mode after completing vehicle service.

Go to MGSS [SERVICE CAUTIONS FOR VEHICLES WITH TELEMATICS COMMUNICATION SYSTEM \[\(US\)\]](#).

Mazda Connected Vehicle Viewer (MCVV) (2020 Mazda3)

The Mazda Connected Vehicle Viewer (MCVV) enhances the Mazda ownership experience by providing Mazda Service Advisors, Technicians and Call Center Associates access to real-time vehicle status information alerts for applicable Mazda connected vehicles.

This powerful tool allows you to proactively understand and diagnose customer concerns and resolve potential issues, demonstrating how well you know the customer’s vehicle while establishing your readiness and willingness to assist.



MAZDA CONNECTED VEHICLE VIEWER USER GUIDE (MCVV) (see attachment)

CONSUMER NOTICE: The information and instructions in this bulletin are intended for use by skilled technicians. Mazda technicians utilize the proper tools/equipment and take training to correctly and safely maintain Mazda vehicles. These instructions should not be performed by "do-it-yourselfers." Customers should not assume this bulletin applies to their vehicle or that their vehicle will develop the described concern. To determine if the information applies, customers should contact their nearest authorized Mazda dealership. Mazda North American Operations reserves the right to alter the specifications and contents of this bulletin without obligation or advance notice. All rights reserved. No part of this bulletin may be reproduced in any form or by any means, electronic or mechanical---including photocopying and recording and the use of any kind of information storage and retrieval system ---without permission in writing.

Apple CarPlay™ / Android Auto™ Activation

1. The 2019-2020 Mazda3, 4 door sedan, Standard Trim (base model) is not equipped with Apple CarPlay™ / Android Auto™.
2. Apple CarPlay™ / Android Auto™ MDARS Activation is available for the 2019-2020 Mazda3, 4 door sedan, Standard (base model).

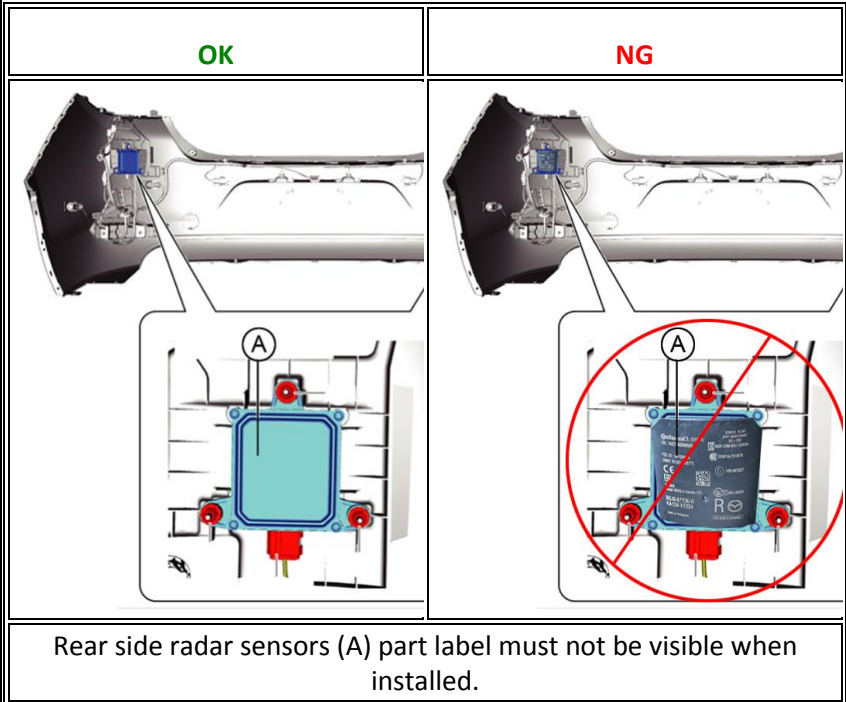
See [SA-001/19 - APPLE CARPLAY™ / ANDROID AUTO™ FREQUENTLY ASKED QUESTIONS \(FAQ\)](#)

See [Apple Carplay / Android Auto Activation Instructions](#)

Blind Spot Monitoring (BSM) System

1. BSM system indicates vehicle on the opposite side.
2. i-ACTIVSENSE indicator ring will not turn green
3. Rear Cross Traffic Alert (RCTA) does not work
4. Rear side radar sensor aiming may fail
5. TPMS DTC(s) stored

This may be caused by BSM rear side radar sensor(s) installed facing the wrong direction.



CONSUMER NOTICE: The information and instructions in this bulletin are intended for use by skilled technicians. Mazda technicians utilize the proper tools/equipment and take training to correctly and safely maintain Mazda vehicles. These instructions should not be performed by "do-it-yourselfers." Customers should not assume this bulletin applies to their vehicle or that their vehicle will develop the described concern. To determine if the information applies, customers should contact their nearest authorized Mazda dealership. Mazda North American Operations reserves the right to alter the specifications and contents of this bulletin without obligation or advance notice. All rights reserved. No part of this bulletin may be reproduced in any form or by any means, electronic or mechanical---including photocopying and recording and the use of any kind of information storage and retrieval system ---without permission in writing.

Front Wiper Service Caution

1. Wiper arm park position is located under the hood.
2. When servicing front wipers, front wiper service mode is required or damage to wiper arms may occur (see Service Information).
3. If wiper arms are replaced, M-MDS is needed for wiper arm adjustment (see Service Information)
4. DO NOT use wiper arms as markers when in dealer inventory.

See [Owner's Manual - Maintenance and Care Replacing Windshield Wiper Blades](#)

MGSS: [WINDSHIELD WIPER ARM AND BLADE ADJUSTMENT](#)

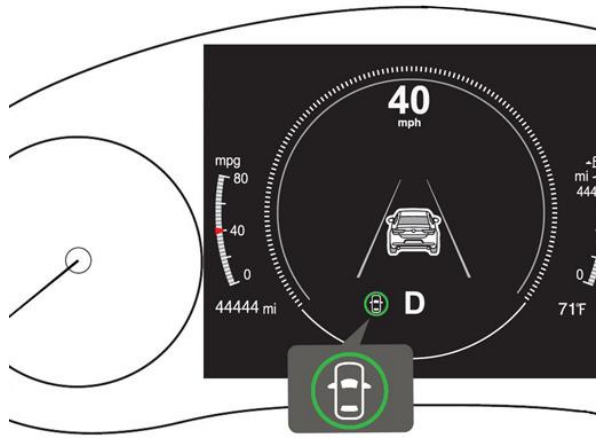
CONSUMER NOTICE: The information and instructions in this bulletin are intended for use by skilled technicians. Mazda technicians utilize the proper tools/equipment and take training to correctly and safely maintain Mazda vehicles. These instructions should not be performed by "do-it-yourselfers." Customers should not assume this bulletin applies to their vehicle or that their vehicle will develop the described concern. To determine if the information applies, customers should contact their nearest authorized Mazda dealership. Mazda North American Operations reserves the right to alter the specifications and contents of this bulletin without obligation or advance notice. All rights reserved. No part of this bulletin may be reproduced in any form or by any means, electronic or mechanical---including photocopying and recording and the use of any kind of information storage and retrieval system ---without permission in writing.

i-ACTIVSENSE Switch (New)



When i-ACTIVSENSE is in normal operating status, the instrument cluster i-ACTIVSENSE indicator is green.

Activated Status: Green



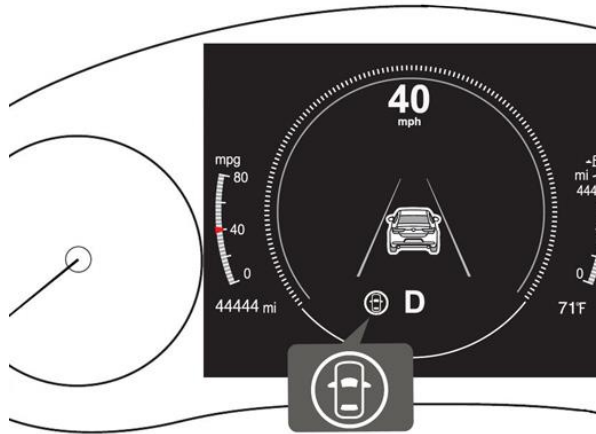
For 2019-2020 (early production):
See [Owner's Manual](#) - When Driving - i-ACTIVSENSE - [i-ACTIVSENSE](#)

For 2020 (later production):
See [Owner's Manual](#) - When Driving - i-ACTIVSENSE - [i-ACTIVSENSE](#)

CONSUMER NOTICE: The information and instructions in this bulletin are intended for use by skilled technicians. Mazda technicians utilize the proper tools/equipment and take training to correctly and safely maintain Mazda vehicles. These instructions should not be performed by "do-it-yourselfers." Customers should not assume this bulletin applies to their vehicle or that their vehicle will develop the described concern. To determine if the information applies, customers should contact their nearest authorized Mazda dealership. Mazda North American Operations reserves the right to alter the specifications and contents of this bulletin without obligation or advance notice. All rights reserved. No part of this bulletin may be reproduced in any form or by any means, electronic or mechanical---including photocopying and recording and the use of any kind of information storage and retrieval system ---without permission in writing.

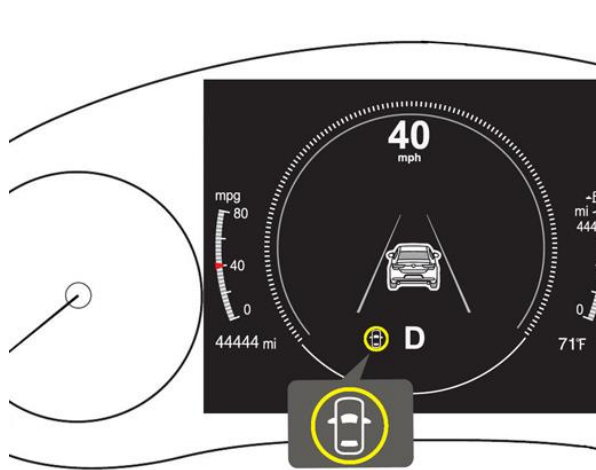
When i-
ACTIVSENSE has
an environmental
fault, such as a
dirty windshield or
driving into the
sun, the
instrument cluster
i-ACTIVSENSE
indicator is white.

Stand-by Status: White



When i-
ACTIVSENSE has a
fault that needs
diagnosis by a
dealership, the
instrument cluster
i-ACTIVSENSE
indicator is amber.

Warning Status: Amber



CONSUMER NOTICE: The information and instructions in this bulletin are intended for use by skilled technicians. Mazda technicians utilize the proper tools/equipment and take training to correctly and safely maintain Mazda vehicles. These instructions should not be performed by "do-it-yourselfers." Customers should not assume this bulletin applies to their vehicle or that their vehicle will develop the described concern. To determine if the information applies, customers should contact their nearest authorized Mazda dealership. Mazda North American Operations reserves the right to alter the specifications and contents of this bulletin without obligation or advance notice. All rights reserved. No part of this bulletin may be reproduced in any form or by any means, electronic or mechanical---including photocopying and recording and the use of any kind of information storage and retrieval system ---without permission in writing.

For 2019-2020
(built July 29,
2019) with VINS:

1. JM1BP*****
150231
 2. 3MZBP*****
118757
- and earlier

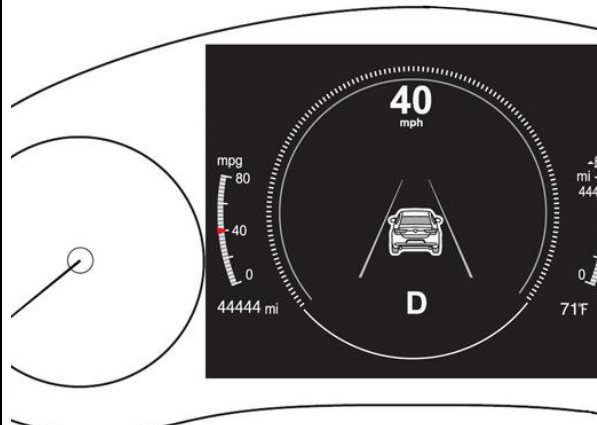
For 2019-2020
with Recall 4219L
Open.

When the i-
ACTIVSENSE
switch is pressed
and released
immediately, the
following systems
are **OFF**.

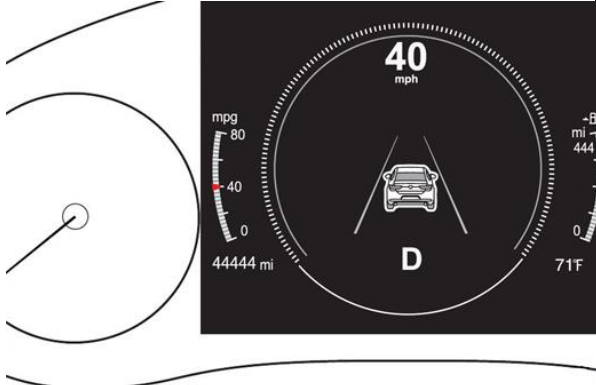
1. Lane
Departure
Warning
System
(LDWS)
2. Blind Spot
Monitoring
(BSM)
3. Distance
Speed Alert
(DSA)
4. Rear Cross
Traffic Alert
(RCTA)
5. Lane-keep
Assist System
(LAS)

To turn the system
back to **ON** , press

OFF (Partially Cancelled Status):
INDICATOR IS TURNED OFF



CONSUMER NOTICE: The information and instructions in this bulletin are intended for use by skilled technicians. Mazda technicians utilize the proper tools/equipment and take training to correctly and safely maintain Mazda vehicles. These instructions should not be performed by "do-it-yourselfers." Customers should not assume this bulletin applies to their vehicle or that their vehicle will develop the described concern. To determine if the information applies, customers should contact their nearest authorized Mazda dealership. Mazda North American Operations reserves the right to alter the specifications and contents of this bulletin without obligation or advance notice. All rights reserved. No part of this bulletin may be reproduced in any form or by any means, electronic or mechanical---including photocopying and recording and the use of any kind of information storage and retrieval system ---without permission in writing.

| | | |
|---|--|--|
| <p>the i-ACTIVSENSE switch once.</p> <p>NOTE:</p> <ol style="list-style-type: none"> 1. When the ignition is turned OFF - ON, i-ACTIVSENSE remains OFF. 2. If MRCC is activated, i-ACTIVSENSE switches to ON. 3. When MRCC is deactivated, i-ACTIVSENSE returns to OFF. | | |
| <p>For 2019-2020 (built July 29, 2019) with VINS:</p> <ol style="list-style-type: none"> 1. JM1BP***** 150231 2. 3MZBP***** 118757 <p>and earlier</p> <p>For 2019-2020 with Recall 4219L Open.</p> <p>When the i-ACTIVSENSE switch is pressed and held, all systems are OFF.</p> <ol style="list-style-type: none"> 1. Lane Departure | <p>OFF (Fully Cancelled Status): I-ACTIVSENSE INDICATOR IS OFF SBS OFF WARNING LIGHT IS ON</p>  | |

CONSUMER NOTICE: The information and instructions in this bulletin are intended for use by skilled technicians. Mazda technicians utilize the proper tools/equipment and take training to correctly and safely maintain Mazda vehicles. These instructions should not be performed by "do-it-yourselfers." Customers should not assume this bulletin applies to their vehicle or that their vehicle will develop the described concern. To determine if the information applies, customers should contact their nearest authorized Mazda dealership. Mazda North American Operations reserves the right to alter the specifications and contents of this bulletin without obligation or advance notice. All rights reserved. No part of this bulletin may be reproduced in any form or by any means, electronic or mechanical---including photocopying and recording and the use of any kind of information storage and retrieval system ---without permission in writing.

| | | |
|--|--|--|
| <p>Warning System (LDWS)</p> <ol style="list-style-type: none"> 2. Blind Spot Monitoring (BSM) 3. Distance Speed Alert (DSA) 4. Rear Cross Traffic Alert (RCTA) 5. Lane-keep Assist System (LAS) 6. Smart Brake Support (SBS) 7. Smart Brake Support [Rear] (SBS-R) 8. Smart Brake Support [Rear Crossing] (SBS RC) <p>To turn the system back to ON, press the i-ACTIVSENSE switch once. NOTE:</p> <ol style="list-style-type: none"> 1. When the ignition is turned OFF - ON, i-ACTIVSENSE switches to ON. | | |
| <p>For 2020 (built July 30, 2019) with VINS:</p> | <p>OFF (Cancelled Status):</p> <p>I-ACTIVSENSE OFF INDICATOR IS ILLUMINATED</p> | |

CONSUMER NOTICE: The information and instructions in this bulletin are intended for use by skilled technicians. Mazda technicians utilize the proper tools/equipment and take training to correctly and safely maintain Mazda vehicles. These instructions should not be performed by "do-it-yourselfers." Customers should not assume this bulletin applies to their vehicle or that their vehicle will develop the described concern. To determine if the information applies, customers should contact their nearest authorized Mazda dealership. Mazda North American Operations reserves the right to alter the specifications and contents of this bulletin without obligation or advance notice. All rights reserved. No part of this bulletin may be reproduced in any form or by any means, electronic or mechanical---including photocopying and recording and the use of any kind of information storage and retrieval system ---without permission in writing.

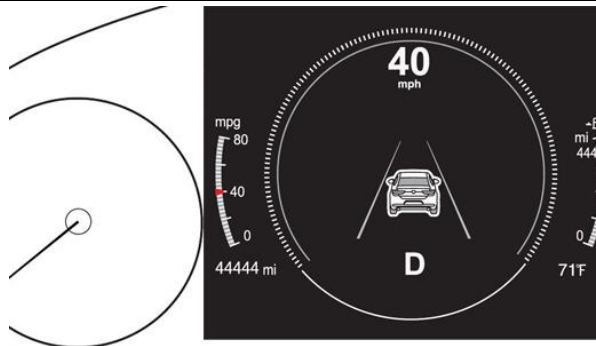
1. JM1BP*****
150232
 2. 3MZBP*****
118758
- and later

For 2019-2020
with Recall 4219L
completed
(Closed).

When the i-
ACTIVSENSE
switch is pressed,
the following
systems are **OFF**
and the i-
ACTIVSENSE OFF
indicator
illuminates.

1. Lane
Departure
Warning
System
(LDWS)
2. Blind Spot
Monitoring
(BSM)
3. Distance
Speed Alert
(DSA)
4. Rear Cross
Traffic Alert
(RCTA)
5. Lane-keep
Assist System
(LAS)

To turn the system
back to **ON**, press
the i-ACTIVSENSE
switch once.



CONSUMER NOTICE: The information and instructions in this bulletin are intended for use by skilled technicians. Mazda technicians utilize the proper tools/equipment and take training to correctly and safely maintain Mazda vehicles. These instructions should not be performed by "do-it-yourselfers." Customers should not assume this bulletin applies to their vehicle or that their vehicle will develop the described concern. To determine if the information applies, customers should contact their nearest authorized Mazda dealership. Mazda North American Operations reserves the right to alter the specifications and contents of this bulletin without obligation or advance notice. All rights reserved. No part of this bulletin may be reproduced in any form or by any means, electronic or mechanical---including photocopying and recording and the use of any kind of information storage and retrieval system ---without permission in writing.

NOTE:

1. When the ignition is turned OFF - ON, i-ACTIVSENSE switches to **ON**.
2. If MRCC is activated, i-ACTIVSENSE switches to **ON**.
3. When MRCC is deactivated, i-ACTIVSENSE remains **ON**.
4. The i-ACTIVSENSE switch does not cancel SBS. SBS can be deactivated using infotainment system settings.

CONSUMER NOTICE: The information and instructions in this bulletin are intended for use by skilled technicians. Mazda technicians utilize the proper tools/equipment and take training to correctly and safely maintain Mazda vehicles. These instructions should not be performed by "do-it-yourselfers." Customers should not assume this bulletin applies to their vehicle or that their vehicle will develop the described concern. To determine if the information applies, customers should contact their nearest authorized Mazda dealership. Mazda North American Operations reserves the right to alter the specifications and contents of this bulletin without obligation or advance notice. All rights reserved. No part of this bulletin may be reproduced in any form or by any means, electronic or mechanical---including photocopying and recording and the use of any kind of information storage and retrieval system ---without permission in writing.

Traffic Sign Recognition (TSR) *

NOTE:

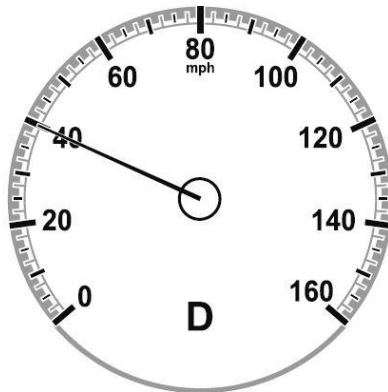
| Year/Model | TSR | Excessive Speed Warning | Display Location | |
|-------------|------------------------|-------------------------|---|--|
| 2019 Mazda3 | ✓ Before VCM Update | ✓ After VCM Update | Instrument Cluster | - Requires - Disabled Auto USB d - If the VCN software, t Mazda3 wi cannot be |
| 2020 Mazda3 | | ✓ | Instrument Cluster and Active Driving Display | - Requires - Disabled Auto USB d |
| 2021 Mazda3 | ✓ | | Instrument Cluster and Active Driving Display | - Requires - Disabled Auto USB d |

See Owner's Manual - When Driving - i-ACTIVSENSE - i-ACTIVSENSE - [Traffic Sign Recognition System \(TSR\)](#)

MGSS: [Traffic Sign Recognition \(TSR\)](#)

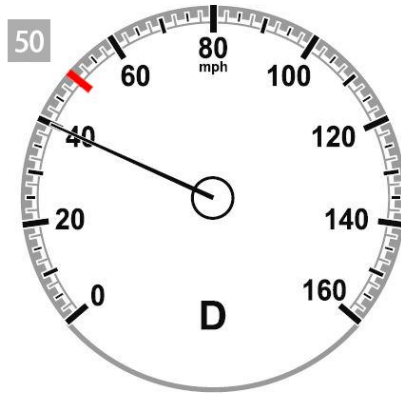
* Some models

MAZDA CONNECT
Speed Limit Alert OFF
(Default Setting)

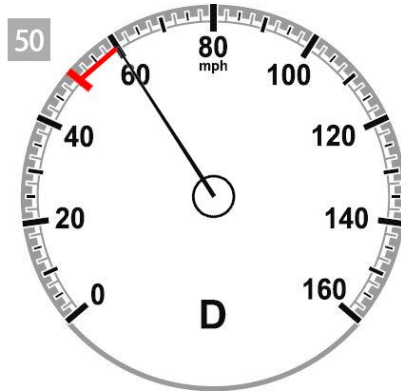


No Function

CONSUMER NOTICE: The information and instructions in this bulletin are intended for use by skilled technicians. Mazda technicians utilize the proper tools/equipment and take training to correctly and safely maintain Mazda vehicles. These instructions should not be performed by "do-it-yourselfers." Customers should not assume this bulletin applies to their vehicle or that their vehicle will develop the described concern. To determine if the information applies, customers should contact their nearest authorized Mazda dealership. Mazda North American Operations reserves the right to alter the specifications and contents of this bulletin without obligation or advance notice. All rights reserved. No part of this bulletin may be reproduced in any form or by any means, electronic or mechanical---including photocopying and recording and the use of any kind of information storage and retrieval system ---without permission in writing.

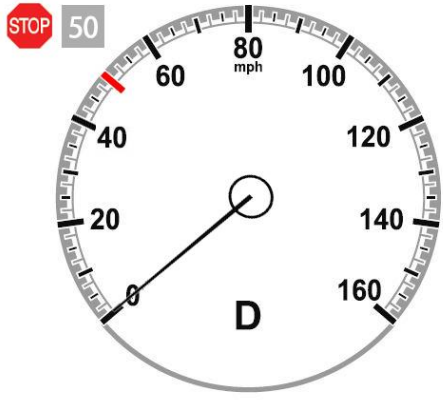
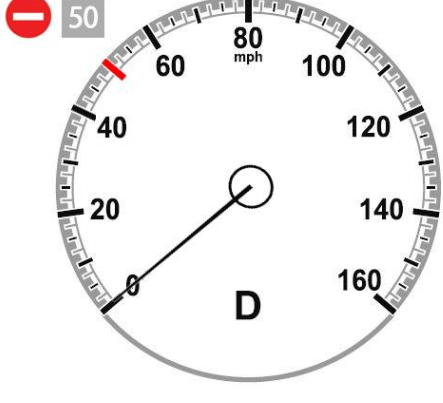


Driving under the speed limit



Driving over the speed limit

CONSUMER NOTICE: The information and instructions in this bulletin are intended for use by skilled technicians. Mazda technicians utilize the proper tools/equipment and take training to correctly and safely maintain Mazda vehicles. These instructions should not be performed by "do-it-yourselfers." Customers should not assume this bulletin applies to their vehicle or that their vehicle will develop the described concern. To determine if the information applies, customers should contact their nearest authorized Mazda dealership. Mazda North American Operations reserves the right to alter the specifications and contents of this bulletin without obligation or advance notice. All rights reserved. No part of this bulletin may be reproduced in any form or by any means, electronic or mechanical---including photocopying and recording and the use of any kind of information storage and retrieval system ---without permission in writing.

| | | |
|---|--|--|
| |  <p>Stop sign and Speed Limit recognized</p> | |
| <p>MAZDA CONNECT Speed Limit Alert ON (Customer Setting Change)</p> |  <p>Do Not Enter sign and Speed Limit recognized</p> | |

CONSUMER NOTICE: The information and instructions in this bulletin are intended for use by skilled technicians. Mazda technicians utilize the proper tools/equipment and take training to correctly and safely maintain Mazda vehicles. These instructions should not be performed by "do-it-yourselfers." Customers should not assume this bulletin applies to their vehicle or that their vehicle will develop the described concern. To determine if the information applies, customers should contact their nearest authorized Mazda dealership. Mazda North American Operations reserves the right to alter the specifications and contents of this bulletin without obligation or advance notice. All rights reserved. No part of this bulletin may be reproduced in any form or by any means, electronic or mechanical---including photocopying and recording and the use of any kind of information storage and retrieval system ---without permission in writing.

| | | |
|--|-------------------------------------|--|
| | Excessive Speed Warning | |
| <p>MAZDA CONNECT Speed Limit Alert Customer Settings</p> <ol style="list-style-type: none"> 1. Speed Limit Alert Settings <ol style="list-style-type: none"> 1. OFF 2. Visual 3. Visual + Audible 2. Speed Limit Alert Threshold <ol style="list-style-type: none"> 1. 0 mph 2. +5 mph 3. +10 mph <p>** SD Card maps may contain information about the speed limits of the roads. The navigation system is able to warn driver if they exceed the current limit. This information may not be available in some areas or may not be fully correct for all roads on the map.</p> | | |
| <p>Excessive Speed Warning * (2020 Mazda3, 2020 CX-30)</p> <p>NOTE:</p> <ol style="list-style-type: none"> 1. Excessive Speed Warning function is only available with a dealer installed in-vehicle navigation system accessory**. 2. Excessive Speed Warning function is displayed in the Instrument Cluster and the Active Driving Display. 3. Excessive Speed Warning function is disabled when Apple CarPlay™ or Android Auto™ is connected. <p>* Some models</p> | | <p>See Owner's Manual - When Driving - i-ACTIVSENSE - i-ACTIVSENSE - Excessive Speed Warning</p> |
| <p>Below the Speed Limit</p> | <p>Above the Speed Limit</p> | |

CONSUMER NOTICE: The information and instructions in this bulletin are intended for use by skilled technicians. Mazda technicians utilize the proper tools/equipment and take training to correctly and safely maintain Mazda vehicles. These instructions should not be performed by "do-it-yourselfers." Customers should not assume this bulletin applies to their vehicle or that their vehicle will develop the described concern. To determine if the information applies, customers should contact their nearest authorized Mazda dealership. Mazda North American Operations reserves the right to alter the specifications and contents of this bulletin without obligation or advance notice. All rights reserved. No part of this bulletin may be reproduced in any form or by any means, electronic or mechanical---including photocopying and recording and the use of any kind of information storage and retrieval system ---without permission in writing.

1. Active Driving Display
 2. Instrument Cluster
 3. Basic Display
 4. i-ACTIVSENSE Display
 5. Speed Limit Indication

MAZDA CONNECT Excessive Speed Warning Customer Settings

1. Speed Limit Settings
 1. OFF
 2. Visual
 3. Visual + Audible
2. Speed Limit Threshold Settings
 1. 0 mph
 2. +5 mph
 3. +10 mph

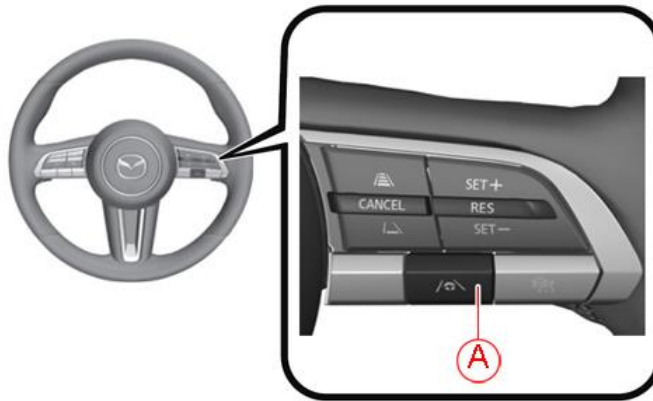
** SD Card maps may contain information about the speed limits of the roads. The navigation system is able to warn driver if they exceed

CONSUMER NOTICE: The information and instructions in this bulletin are intended for use by skilled technicians. Mazda technicians utilize the proper tools/equipment and take training to correctly and safely maintain Mazda vehicles. These instructions should not be performed by "do-it-yourselfers." Customers should not assume this bulletin applies to their vehicle or that their vehicle will develop the described concern. To determine if the information applies, customers should contact their nearest authorized Mazda dealership. Mazda North American Operations reserves the right to alter the specifications and contents of this bulletin without obligation or advance notice. All rights reserved. No part of this bulletin may be reproduced in any form or by any means, electronic or mechanical---including photocopying and recording and the use of any kind of information storage and retrieval system ---without permission in writing.

the current limit. This information may not be available in some areas or may not be fully correct for all roads on the map.

Traffic Jam Assist (TJA)* (2021 Mazda3 only)
 When lane lines are detected, the function assists the driver in keeping the vehicle within the lane lines. If lane lines are not detected, the function provides the driver driving assistance in keeping the vehicle along the motion path with the vehicle ahead.
 Steering assist function operates below 35 mph.

TJA Set Switch

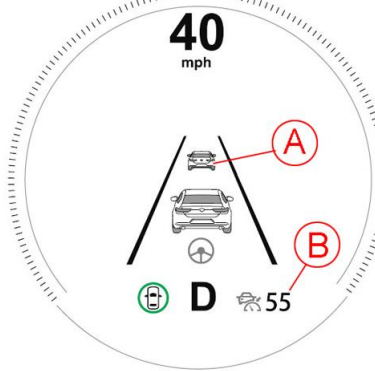


A: TJA Switch

er's Manual - When
 - i-ACTIVSENSE - i-
 SE -Traffic Jam Assist

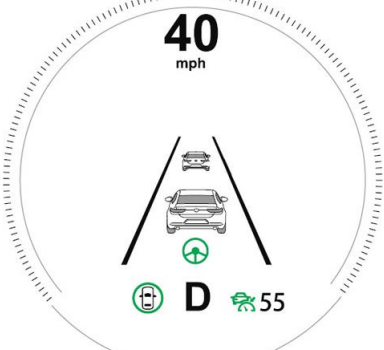
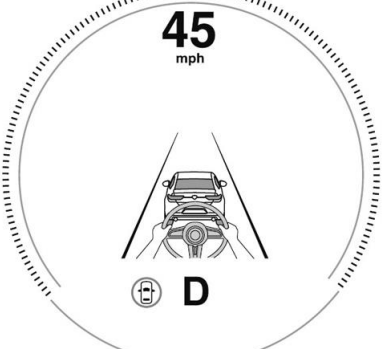
MGSS: [TRAFFIC JAM ASSIST \(TJA\)](#)

TJA system is on standby



A: Vehicle ahead display
 B: TJA vehicle speed set

CONSUMER NOTICE: The information and instructions in this bulletin are intended for use by skilled technicians. Mazda technicians utilize the proper tools/equipment and take training to correctly and safely maintain Mazda vehicles. These instructions should not be performed by "do-it-yourselfers." Customers should not assume this bulletin applies to their vehicle or that their vehicle will develop the described concern. To determine if the information applies, customers should contact their nearest authorized Mazda dealership. Mazda North American Operations reserves the right to alter the specifications and contents of this bulletin without obligation or advance notice. All rights reserved. No part of this bulletin may be reproduced in any form or by any means, electronic or mechanical---including photocopying and recording and the use of any kind of information storage and retrieval system ---without permission in writing.

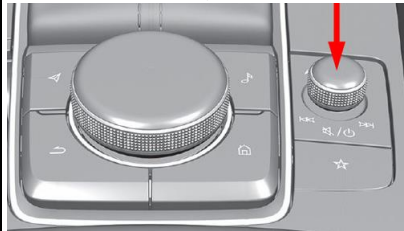
| | | |
|--------------------------------------|--|--|
| <p>Vehicle ahead is detected</p> |  | |
| <p>Steering Assist Limit Warning</p> |  | |
| <p>*Some models</p> | | |

CONSUMER NOTICE: The information and instructions in this bulletin are intended for use by skilled technicians. Mazda technicians utilize the proper tools/equipment and take training to correctly and safely maintain Mazda vehicles. These instructions should not be performed by "do-it-yourselfers." Customers should not assume this bulletin applies to their vehicle or that their vehicle will develop the described concern. To determine if the information applies, customers should contact their nearest authorized Mazda dealership. Mazda North American Operations reserves the right to alter the specifications and contents of this bulletin without obligation or advance notice. All rights reserved. No part of this bulletin may be reproduced in any form or by any means, electronic or mechanical---including photocopying and recording and the use of any kind of information storage and retrieval system ---without permission in writing.

MAZDA CONNECT New Power Off Function



1. Audio Mute - Short press the volume knob (Press again to cancel)
2. Power Off - Press and hold the volume knob (Press and hold again to Power ON)



See [Owner's Manual](#)
-Interior Features - [Mazda Connect](#)

MGSS: [ENTERTAINMENT SYSTEM](#)

[In-vehicle Owner's Manual installation](#)

CONSUMER NOTICE: The information and instructions in this bulletin are intended for use by skilled technicians. Mazda technicians utilize the proper tools/equipment and take training to correctly and safely maintain Mazda vehicles. These instructions should not be performed by "do-it-yourselfers." Customers should not assume this bulletin applies to their vehicle or that their vehicle will develop the described concern. To determine if the information applies, customers should contact their nearest authorized Mazda dealership. Mazda North American Operations reserves the right to alter the specifications and contents of this bulletin without obligation or advance notice. All rights reserved. No part of this bulletin may be reproduced in any form or by any means, electronic or mechanical---including photocopying and recording and the use of any kind of information storage and retrieval system ---without permission in writing.

MAZDA CONNECT Center Display View

The rear-view monitor does not utilize all of the center display space.

| Function | Display |
|-------------------|--|
| MAZDA CONNECT FM |  |
| Apple CarPlay |  |
| Android Auto |  |
| Rear View Monitor |  |

CONSUMER NOTICE: The information and instructions in this bulletin are intended for use by skilled technicians. Mazda technicians utilize the proper tools/equipment and take training to correctly and safely maintain Mazda vehicles. These instructions should not be performed by "do-it-yourselfers." Customers should not assume this bulletin applies to their vehicle or that their vehicle will develop the described concern. To determine if the information applies, customers should contact their nearest authorized Mazda dealership. Mazda North American Operations reserves the right to alter the specifications and contents of this bulletin without obligation or advance notice. All rights reserved. No part of this bulletin may be reproduced in any form or by any means, electronic or mechanical---including photocopying and recording and the use of any kind of information storage and retrieval system ---without permission in writing.

In-Vehicle Digital Owner's Manual

The in-vehicle digital OM can be displayed on the center display while the vehicle is stopped. Customer can search descriptions and watch videos of vehicle features and functions by operating the commander switch.



NOTE:

1. The digital owner's manual must be installed during PDI. Due to printing deadlines and later updates to the digital manual, the content of the digital manual may differ from the printed manual.
2. USB memory flash drive FAT16 or FAT32 format is required for installation.
3. The vehicle's infotainment system will only accept file names [contents.tar] and [contents.sig]. File names with additional suffixes will not be accepted.
4. The infotainment system may inadvertently be powered OFF if the diagnostic assist function buttons are not pressed correctly. Simply press and hold the volume knob to power back ON.

CONSUMER NOTICE: The information and instructions in this bulletin are intended for use by skilled technicians. Mazda technicians utilize the proper tools/equipment and take training to correctly and safely maintain Mazda vehicles. These instructions should not be performed by "do-it-yourselfers." Customers should not assume this bulletin applies to their vehicle or that their vehicle will develop the described concern. To determine if the information applies, customers should contact their nearest authorized Mazda dealership. Mazda North American Operations reserves the right to alter the specifications and contents of this bulletin without obligation or advance notice. All rights reserved. No part of this bulletin may be reproduced in any form or by any means, electronic or mechanical---including photocopying and recording and the use of any kind of information storage and retrieval system ---without permission in writing.

Navigation System

The 2019-2020 Mazda3 is not equipped with factory installed navigation system, however, it is available as a dealer installed accessory.

NOTE 1: Gen 6.5 Navi SD card with part number prefix BHP1 (2014-2018 Mazda3) installed in the Gen 7 2019-2020 Mazda3 will not function.

| Gen 7 | Gen 7 | Gen 6.5 |
|--|---|-----------------|
| | | |
| P/N prefix BDGF Japan built vehicle | P/N prefix BDTS Mexico built vehicle | P/N prefix BHP1 |
| Interchangeable | | |

NOTE 2: The 2021 Mazda3 with Premium Package is equipped with factory installed navigation system.

SIRIUSXM Data Service No Free Trial (Preferred Package and above)

1. Only available as a paid subscription.
2. The 2019-2020 Mazda3 is not equipped with a factory installed navigation system, however, it is available as a dealer installed accessory.
3. SiriusXM Traffic Plus feature requires in-vehicle navigation SD card.

See [Owner's Manual - Interior Features - Mazda Connect - Appendix](#)
SA-007/19 - [SIRIUSXM DATA SERVICES](#)

CONSUMER NOTICE: The information and instructions in this bulletin are intended for use by skilled technicians. Mazda technicians utilize the proper tools/equipment and take training to correctly and safely maintain Mazda vehicles. These instructions should not be performed by "do-it-yourselfers." Customers should not assume this bulletin applies to their vehicle or that their vehicle will develop the described concern. To determine if the information applies, customers should contact their nearest authorized Mazda dealership. Mazda North American Operations reserves the right to alter the specifications and contents of this bulletin without obligation or advance notice. All rights reserved. No part of this bulletin may be reproduced in any form or by any means, electronic or mechanical---including photocopying and recording and the use of any kind of information storage and retrieval system ---without permission in writing.

Power Door Locks

Doors Lock With Keys In The Vehicle When Liftgate Lock Switch Is Pressed.

(Japan built) vehicles with VINs lower than JM1BP*****1142789 (produced before May 28, 2019)



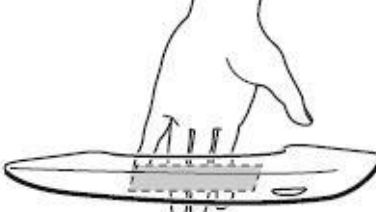

DO NOT leave keys in the vehicle. The doors will lock with the keys in the vehicle when the liftgate lock switch is pressed and the liftgate is closed, but the liftgate will not lock in the above condition.

NOTE: This is currently under investigation.

Doors cannot be unlocked using the outside door handle touch sensor. The door handle touch sensor system may not operate normally under the following conditions:

1. The front passenger (without key) grabs and holds the outside door handle before the driver (with key) touches the drivers outside door handle unlock touch sensor.
2. The driver touches the sensing area of the door lock touch sensor and the sensing area of the door release touch sensor at the same time.

See [Owner's Manual](#)
-Before Driving - [Doors and Locks](#)

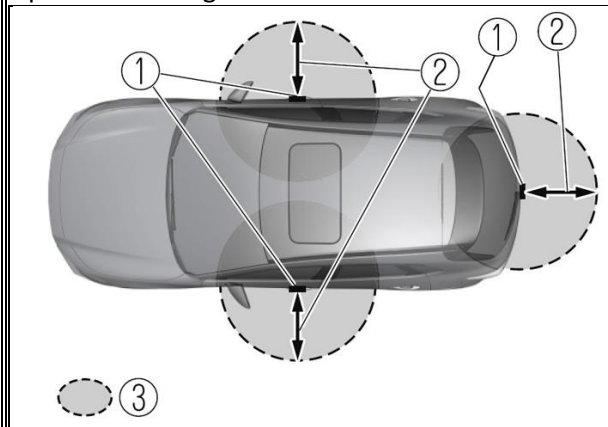
| Good | No Good |
|---|--|
|  |  |

CONSUMER NOTICE: The information and instructions in this bulletin are intended for use by skilled technicians. Mazda technicians utilize the proper tools/equipment and take training to correctly and safely maintain Mazda vehicles. These instructions should not be performed by "do-it-yourselfers." Customers should not assume this bulletin applies to their vehicle or that their vehicle will develop the described concern. To determine if the information applies, customers should contact their nearest authorized Mazda dealership. Mazda North American Operations reserves the right to alter the specifications and contents of this bulletin without obligation or advance notice. All rights reserved. No part of this bulletin may be reproduced in any form or by any means, electronic or mechanical---including photocopying and recording and the use of any kind of information storage and retrieval system ---without permission in writing.

Walk-Away Auto Lock Function

A beep sound is heard when all doors and the liftgate are closed while the transmitter is being carried. All the doors, fuel-filler lid, and liftgate are locked automatically when the transmitter is out of the operational range. Also, the hazard warning lights flash once. (Even if the driver is in the operational range, all the doors, fuel-filler lid, and liftgate are locked automatically after about 30 seconds.) If you are out of the operational range before the doors and the liftgate are completely closed or another transmitter is left in the vehicle, the walk-away auto lock function will not work. Always make sure that all doors and the liftgate are closed and locked before leaving the vehicle. The walk-away auto lock function does not close the power windows.

Operational Range



- 1. Exterior Antenna
- 2. 31 in (80 cm)
- 3. Operational range

Scenarios Where Walk-Away Lock Function May Not Work

| Scenario | Reason | |
|--|--|-----------------|
| 1. Key transmitter is outside of antenna range | 1. By the time all the doors are closed, the key transmitter is already out of | Always in opera |

See Owner's Manual - Before Driving - [Doors and Locks](#)

CONSUMER NOTICE: The information and instructions in this bulletin are intended for use by skilled technicians. Mazda technicians utilize the proper tools/equipment and take training to correctly and safely maintain Mazda vehicles. These instructions should not be performed by "do-it-yourselfers." Customers should not assume this bulletin applies to their vehicle or that their vehicle will develop the described concern. To determine if the information applies, customers should contact their nearest authorized Mazda dealership. Mazda North American Operations reserves the right to alter the specifications and contents of this bulletin without obligation or advance notice. All rights reserved. No part of this bulletin may be reproduced in any form or by any means, electronic or mechanical---including photocopying and recording and the use of any kind of information storage and retrieval system ---without permission in writing.

| | | | |
|----|---|--|--|
| | while any of the doors have not been closed. | operational range, causing walk-away lock to not function. | the last person to leave after all doors/trunk/liftgate are closed. |
| 2. | Key transmitter holder exits driver's door then opens rear left door to retrieve items. | <ol style="list-style-type: none"> 1. Depending on the key transmitter holder's distance to the antenna when he/she is closing the driver side rear door, the walk-away lock may or may not function. 2. If standing closer to the rear bumper area when closing the rear door, the key transmitter may be out of the operational range, causing walk-away lock to not function. 3. If standing closer to the B-pillar when closing the rear door, the walk-away lock should function correctly. | Be mindful of the key holder's position in relation to the door exterior antenna (31 in). |
| 3. | Key transmitter holder moves out of operational range too quickly. | <ol style="list-style-type: none"> 1. If the key transmitter holder is in a hurry to get out of the car and leaves the operational range too quickly before the audio beep, the walkaway lock function may not work. 2. The key transmitter holder opens the driver's door, gets out, and walks away at a fast pace while shutting the door. It is possible that by the time the door is completely shut, the key transmitter holder is already out of operational range because she/he is moving away too fast, causing walk-away lock to not function. | Slow down and make sure the audio beep sounds before leaving the operational range, the audio beep sound will always sound to alert the key transmitter holder that the key was detected for walk-away door lock function. |

CONSUMER NOTICE: The information and instructions in this bulletin are intended for use by skilled technicians. Mazda technicians utilize the proper tools/equipment and take training to correctly and safely maintain Mazda vehicles. These instructions should not be performed by "do-it-yourselfers." Customers should not assume this bulletin applies to their vehicle or that their vehicle will develop the described concern. To determine if the information applies, customers should contact their nearest authorized Mazda dealership. Mazda North American Operations reserves the right to alter the specifications and contents of this bulletin without obligation or advance notice. All rights reserved. No part of this bulletin may be reproduced in any form or by any means, electronic or mechanical---including photocopying and recording and the use of any kind of information storage and retrieval system ---without permission in writing.

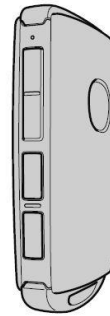
Auxiliary Key
The auxiliary keys need to be inserted into the transmitters during PDI.

Auxiliary Key

Transmitter



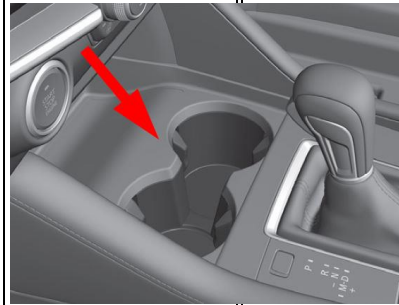
NOTE: The auxiliary keys are small and could be overlooked during PDI.



Vehicles arrive at the dealer with Auxiliary Keys located in the glove compartment*



Vehicles arrive at the dealer with Auxiliary Keys located in the front door pocket



Manual- Before
- Auxiliary key

*Vehicles that arrive at the dealer after business hours, transmitters/auxiliary keys are located in the dealer's early bird key drop box.

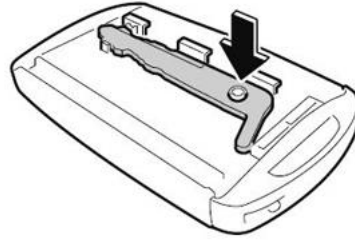
Insert the auxiliary key into the transmitter.

Remove the transmitter lower cover by sliding the knob in the direction shown and then sliding the cover in the opposite direction.

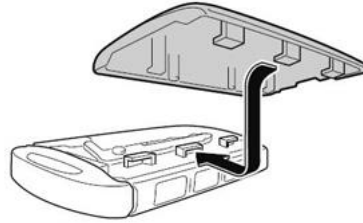


CONSUMER NOTICE: The information and instructions in this bulletin are intended for use by skilled technicians. Mazda technicians utilize the proper tools/equipment and take training to correctly and safely maintain Mazda vehicles. These instructions should not be performed by "do-it-yourselfers." Customers should not assume this bulletin applies to their vehicle or that their vehicle will develop the described concern. To determine if the information applies, customers should contact their nearest authorized Mazda dealership. Mazda North American Operations reserves the right to alter the specifications and contents of this bulletin without obligation or advance notice. All rights reserved. No part of this bulletin may be reproduced in any form or by any means, electronic or mechanical---including photocopying and recording and the use of any kind of information storage and retrieval system ---without permission in writing.

Insert the auxiliary key.



Install the transmitter lower cover by inserting the tabs of the lower cover into the slots of the transmitter.



1. If one transmitter is lost, inform the customer to take cautions not to lose the 2nd transmitter.
2. If both transmitters are lost, the vehicle will be disabled. Use MDARS to program new transmitters.
3. Replacement battery type is CR2032 (3V, 225mAh), which is different than previous 6th generation transmitter battery type CR2025 (3V, 160mAh). If the wrong battery is installed, the transmitter might not work properly (malfunction).

CONSUMER NOTICE: The information and instructions in this bulletin are intended for use by skilled technicians. Mazda technicians utilize the proper tools/equipment and take training to correctly and safely maintain Mazda vehicles. These instructions should not be performed by "do-it-yourselfers." Customers should not assume this bulletin applies to their vehicle or that their vehicle will develop the described concern. To determine if the information applies, customers should contact their nearest authorized Mazda dealership. Mazda North American Operations reserves the right to alter the specifications and contents of this bulletin without obligation or advance notice. All rights reserved. No part of this bulletin may be reproduced in any form or by any means, electronic or mechanical---including photocopying and recording and the use of any kind of information storage and retrieval system ---without permission in writing.

Transmitter Battery Saving Function (Key Fob)

The Mazda3 has a "power saving" function built into the keyless entry system where some key fob functions are disabled. This feature could accidentally be enabled and some concerns with the vehicle may be:

1. Engine does not start.
2. Engine does not start unless you hold the fob to the start/stop button.
3. Doors do not unlock using the door handle, but unlock with the remote.
4. Doors do not lock using the door handle, but lock with the remote.
5. Transmitter indicator light does not turn on/flash.

Turning on the power saving function

After you have turned on the power saving function according to the following procedure, the hazard warning lights and sound operate* one time.

1. Press the lock button on the transmitter 4 times within 3 seconds to turn on the operation indicator light.
2. Press the lock button continuously for 1.5 seconds or longer while the operation indicator light turns on (for 5 seconds).
3. Press any of the buttons on the transmitter to make sure that the operation indicator light does not turn on/flash.

Turning off the power saving function

After you have turned off the power saving function according to the following procedure, the hazard warning lights and sound operate* one time.

1. Press any of the buttons on the transmitter to make sure that the operation indicator light does not turn on/flash.
2. Press the lock button on the transmitter 4 times within 3 seconds to turn on the operation indicator light.
3. Press the lock button continuously for 1.5 seconds or

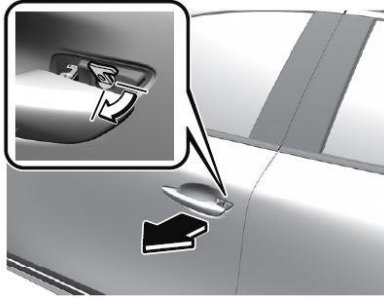
CONSUMER NOTICE: The information and instructions in this bulletin are intended for use by skilled technicians. Mazda technicians utilize the proper tools/equipment and take training to correctly and safely maintain Mazda vehicles. These instructions should not be performed by "do-it-yourselfers." Customers should not assume this bulletin applies to their vehicle or that their vehicle will develop the described concern. To determine if the information applies, customers should contact their nearest authorized Mazda dealership. Mazda North American Operations reserves the right to alter the specifications and contents of this bulletin without obligation or advance notice. All rights reserved. No part of this bulletin may be reproduced in any form or by any means, electronic or mechanical---including photocopying and recording and the use of any kind of information storage and retrieval system ---without permission in writing.

| | |
|--|--|
| | <p>longer while the operation indicator light turns on (for 5 seconds).</p> <p>*: with the advanced keyless function</p> <p>Also see Owner's Manual -Before Driving - Keys - Power saving function</p> |
|--|--|

CONSUMER NOTICE: The information and instructions in this bulletin are intended for use by skilled technicians. Mazda technicians utilize the proper tools/equipment and take training to correctly and safely maintain Mazda vehicles. These instructions should not be performed by "do-it-yourselfers." Customers should not assume this bulletin applies to their vehicle or that their vehicle will develop the described concern. To determine if the information applies, customers should contact their nearest authorized Mazda dealership. Mazda North American Operations reserves the right to alter the specifications and contents of this bulletin without obligation or advance notice. All rights reserved. No part of this bulletin may be reproduced in any form or by any means, electronic or mechanical---including photocopying and recording and the use of any kind of information storage and retrieval system ---without permission in writing.

Keyless Entry Using Auxiliary Key

If the vehicle battery is discharged and/or the key battery is dead, vehicle entry is possible using the auxiliary key.

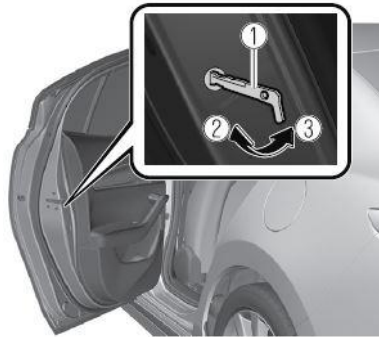


See [Owner's Manual](#)
-Before Driving - Keys - [Auxiliary Key](#)

Then refer to [Owner's Manual](#)
-Before Driving - Doors and Locks
- [Unlocking with Auxiliary Key](#)

Rear Door Child Safety Locks Operation

The auxiliary key is required to enable (lock) and disable (unlock) the rear door child safety locks.



1. Auxiliary Key

2. Lock

3. Unlock

See [Owner's Manual](#)
-Before Driving - Doors and Locks
- [Rear Door Child Safety Locks](#)

CONSUMER NOTICE: The information and instructions in this bulletin are intended for use by skilled technicians. Mazda technicians utilize the proper tools/equipment and take training to correctly and safely maintain Mazda vehicles. These instructions should not be performed by "do-it-yourselfers." Customers should not assume this bulletin applies to their vehicle or that their vehicle will develop the described concern. To determine if the information applies, customers should contact their nearest authorized Mazda dealership. Mazda North American Operations reserves the right to alter the specifications and contents of this bulletin without obligation or advance notice. All rights reserved. No part of this bulletin may be reproduced in any form or by any means, electronic or mechanical---including photocopying and recording and the use of any kind of information storage and retrieval system ---without permission in writing.

Theft-Deterrent System



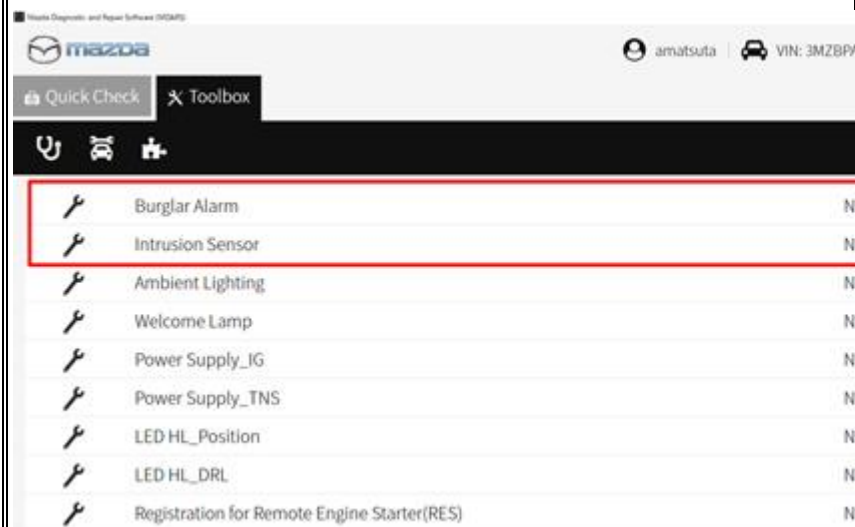
The Mazda3 is not equipped with a Theft-Deterrent System. **CAUTION:** DO NOT use MDARS to enable:

- 1. Burglar Alarm
- 2. Intrusion Sensor

The Mazda3 does not have the necessary Theft-Deterrent System hardware to function if enabled using MDARS, and MDARS cannot disable the Theft-Deterrent System after it has been enabled.

The following DTC's may be stored if the burglar alarm or intrusion sensor are enabled:

- 1. B109F:87 - Intrusion Sensor Module
- 2. B2002:87 - On Board Charger DC/DC Low Voltage Side



CONSUMER NOTICE: The information and instructions in this bulletin are intended for use by skilled technicians. Mazda technicians utilize the proper tools/equipment and take training to correctly and safely maintain Mazda vehicles. These instructions should not be performed by "do-it-yourselfers." Customers should not assume this bulletin applies to their vehicle or that their vehicle will develop the described concern. To determine if the information applies, customers should contact their nearest authorized Mazda dealership. Mazda North American Operations reserves the right to alter the specifications and contents of this bulletin without obligation or advance notice. All rights reserved. No part of this bulletin may be reproduced in any form or by any means, electronic or mechanical---including photocopying and recording and the use of any kind of information storage and retrieval system ---without permission in writing.

Seat Warmer and Heated Steering Wheel Auto Mode
 The driver and front passenger's seater warmers* and the heated steering wheel* can be set to be automatically controlled (turned on and off) by the climate control system, depending on the set temperature.

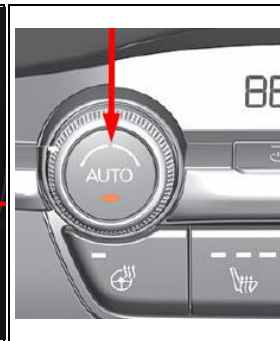
Auto Mode

1. Go to MAZDA CONNECT home screen and select "Settings"
2. Select "Vehicle Settings".
3. Enable "Link Seat Climate Control Temperatures".
4. Press the climate control AUTO switch.

Link Seat Climate Control Temperatures Setting



Climate Control Auto Switch



* if equipped

See [Owner's Manual](#) -Essential Safety Equipment - Seat Warmer/Heated Steering Wheel - [Seat Warmer/ Heated Steering Wheel](#)

Seat Warmer Will Not Turn ON After Previous Usage
 JM1 (Japan built) vehicles produced after December 17, 2018
 3MZ (Mexico built) vehicles produced after March 19, 2019
 After [SA-059/19](#) repair.

1. DTC B1030:13 (SEAT WARMER UNIT (LH) CIRCUIT MALFUNCTION (HEATER SIDE)) is stored.
2. Front seat warmer functions after seat cool down and ignition OFF - ON cycle.

Contact Hotline for latest repair information.

CONSUMER NOTICE: The information and instructions in this bulletin are intended for use by skilled technicians. Mazda technicians utilize the proper tools/equipment and take training to correctly and safely maintain Mazda vehicles. These instructions should not be performed by "do-it-yourselfers." Customers should not assume this bulletin applies to their vehicle or that their vehicle will develop the described concern. To determine if the information applies, customers should contact their nearest authorized Mazda dealership. Mazda North American Operations reserves the right to alter the specifications and contents of this bulletin without obligation or advance notice. All rights reserved. No part of this bulletin may be reproduced in any form or by any means, electronic or mechanical---including photocopying and recording and the use of any kind of information storage and retrieval system ---without permission in writing.

Electric Parking Brake (EPB)

Parking Brake Auto Operation

When the ignition is switched OFF, the parking brake will be applied automatically. The EPB indicator light in the instrument cluster and the EPB switch indicator light turn ON.



1. Indicator light

Canceling the Parking Brake Auto Operation

Parking brake auto operation can be canceled using the procedure in the Owner's Manual.

NOTE: When the ignition is cycled back ON, the parking brake auto operation is restored.

Parking Brake Automatic Release

If the accelerator pedal is depressed with the parking brake applied and all of the following conditions are met, the parking brake is automatically release. When the parking brake is released, the EPB indicator light in the instrument cluster and the EPB switch indicator light turn off.

| | |
|--|---|
| A/T | M/T |
| Engine is running | |
| Driver's door is closed | |
| Driver's seat belt is fastened | |
| Selector lever is in the D, M, or R position | Shift lever is in a position other than neutral |
| | Clutch pedal is depressed half |

See [Owner's Manual](#) - When Driving - Brake - EPB Auto operation

CONSUMER NOTICE: The information and instructions in this bulletin are intended for use by skilled technicians. Mazda technicians utilize the proper tools/equipment and take training to correctly and safely maintain Mazda vehicles. These instructions should not be performed by "do-it-yourselfers." Customers should not assume this bulletin applies to their vehicle or that their vehicle will develop the described concern. To determine if the information applies, customers should contact their nearest authorized Mazda dealership. Mazda North American Operations reserves the right to alter the specifications and contents of this bulletin without obligation or advance notice. All rights reserved. No part of this bulletin may be reproduced in any form or by any means, electronic or mechanical---including photocopying and recording and the use of any kind of information storage and retrieval system ---without permission in writing.

| | |
|--|--|
| | |
|--|--|

CONSUMER NOTICE: The information and instructions in this bulletin are intended for use by skilled technicians. Mazda technicians utilize the proper tools/equipment and take training to correctly and safely maintain Mazda vehicles. These instructions should not be performed by "do-it-yourselfers." Customers should not assume this bulletin applies to their vehicle or that their vehicle will develop the described concern. To determine if the information applies, customers should contact their nearest authorized Mazda dealership. Mazda North American Operations reserves the right to alter the specifications and contents of this bulletin without obligation or advance notice. All rights reserved. No part of this bulletin may be reproduced in any form or by any means, electronic or mechanical---including photocopying and recording and the use of any kind of information storage and retrieval system ---without permission in writing.

Tire Pressure Monitoring System (TPMS) Change
 The TPMS system uses a new rubber type direct TPMS.
NOTE: The new rubber type is not reusable. If the TPMS sensor is removed from the wheel, it must be replaced.



New Rubber Type Old Metal Type

MGSS: [TIRE PRESSURE MONITORING SYSTEM \(TPMS\)](#)

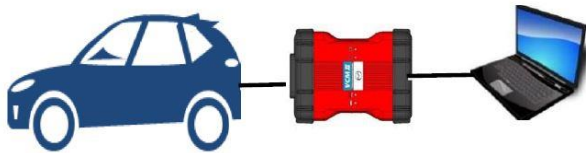
Condition Based Maintenance (Except Canada)
 The vehicle calculates the maintenance (oil change) timing.

1. This function cannot be turned OFF.
2. Distance until the oil change is available in MAZDA CONNECT.
3. **Reset is required after every oil change.**

MGSS: [MAINTENANCE MONITOR OPERATION PROCEDURE](#)

New M-MDS (MDARS)
 A new M-MDS diagnostic tester (MDARS) for 7th generation vehicles (starting with the 2019 Mazda3) is used.

1. Performs more maintenance service functions
2. Performs more complicated vehicle electrical system diagnostic
3. Reprograms more ECU's



MGSS: [BASIC KNOWLEDGE](#)

CONSUMER NOTICE: The information and instructions in this bulletin are intended for use by skilled technicians. Mazda technicians utilize the proper tools/equipment and take training to correctly and safely maintain Mazda vehicles. These instructions should not be performed by "do-it-yourselfers." Customers should not assume this bulletin applies to their vehicle or that their vehicle will develop the described concern. To determine if the information applies, customers should contact their nearest authorized Mazda dealership. Mazda North American Operations reserves the right to alter the specifications and contents of this bulletin without obligation or advance notice. All rights reserved. No part of this bulletin may be reproduced in any form or by any means, electronic or mechanical---including photocopying and recording and the use of any kind of information storage and retrieval system ---without permission in writing.

Parts Replacement

When replacing vehicle parts such as ECU's, motors, seats....etc, always refer to MGSS. Some new components may not operate if MGSS new part replacement procedure is not performed.

CONSUMER NOTICE: The information and instructions in this bulletin are intended for use by skilled technicians. Mazda technicians utilize the proper tools/equipment and take training to correctly and safely maintain Mazda vehicles. These instructions should not be performed by "do-it-yourselfers." Customers should not assume this bulletin applies to their vehicle or that their vehicle will develop the described concern. To determine if the information applies, customers should contact their nearest authorized Mazda dealership. Mazda North American Operations reserves the right to alter the specifications and contents of this bulletin without obligation or advance notice. All rights reserved. No part of this bulletin may be reproduced in any form or by any means, electronic or mechanical---including photocopying and recording and the use of any kind of information storage and retrieval system ---without permission in writing.