



STAR ONLINE PUBLICATION








Case Number: S1708000262 REV A.

Release Date: 11/17/2020

Symptom/Vehicle Issue: Check Engine Lamp Is On, Intermittent Module CAN Private Or LIN BUS Codes

Discussion: Vehicle setting CAN private or LIN BUS DTC's; Example: ECM connector terminal disassembly and terminal repair, U1008-00 LIN BUS. Inspect the involved connector terminal for pushed out, or spread terminals. Use the appropriate tools to separate the ECM connector and repair the involved circuit. See <https://moparesentialtools.com/index.aspx> for terminal tools at Mopar Essential Tools and Service Equipment Fig 1 - 5.

| | | | |
|---|-----------|-----|---|
|  | 10300A | REQ | KIT_TERMINAL_EXTRACTION Availability: Available |
|  | 10300A-17 | REQ | Pick_BEV_EVCU (Electronic Vehicle Control Unit) Terminal Availability: Available |
|  | 10300A-18 | REQ | Pick_BEV_QVPM (Quiet Vehicle Pedestrian Module) Terminal Availability: Available |
|  | 10300A-1 | | Terminal Pick 1 Availability: Available |
|  | 10300A-11 | | Terminal Pick 11 Availability: Available |

Terminal picks in the KIT or individually available at Mopar essential tools.

Fig 1

This document does not authorize warranty repairs. This communication documents a record of past experiences. STAR Online does not provide any conclusions about what is wrong with the vehicle. Rather, it captures all previous cases known that appear to be similar or related to the vehicle symptom / condition. You are the expert, and you are responsible for deciding on the appropriate course of action.

Contact STAR Center, or your Technical Assistance Center Via TechCONNECT or eCONTACT ticket if no solution is found



STAR ONLINE PUBLICATION



Please note:

These instructions focus on removing the smaller single lock tab terminal from the GA 2.0L PCM connectors using Mopar terminal tool number 10300-15A. For the double lock tab, refer to figure 2.



The larger double locking tab terminal requires Tool 10300-14A

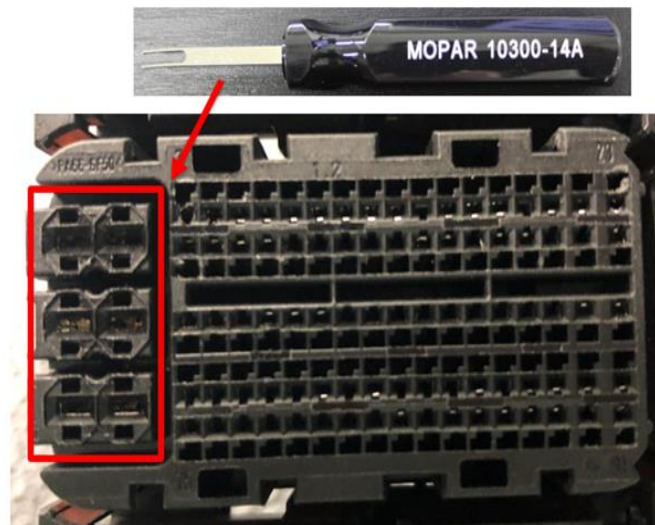


Fig 2

This document does not authorize warranty repairs. This communication documents a record of past experiences. STAR Online does not provide any conclusions about what is wrong with the vehicle. Rather, it captures all previous cases known that appear to be similar or related to the vehicle symptom / condition. You are the expert, and you are responsible for deciding on the appropriate course of action.

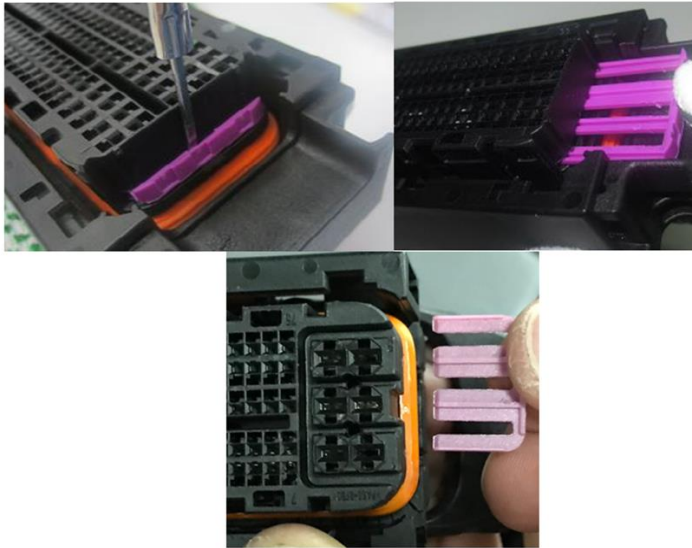
Contact STAR Center, or your Technical Assistance Center Via TechCONNECT or eCONTACT ticket if no solution is found



STAR ONLINE PUBLICATION



Using a suitable tool, disengage and remove the secondary lock as necessary from connector housing.



At the wire insertion side of the connector, locate the wire/terminal that is to be removed.



Fig 3

This document does not authorize warranty repairs. This communication documents a record of past experiences. STAR Online does not provide any conclusions about what is wrong with the vehicle. Rather, it captures all previous cases known that appear to be similar or related to the vehicle symptom / condition. You are the expert, and you are responsible for deciding on the appropriate course of action.

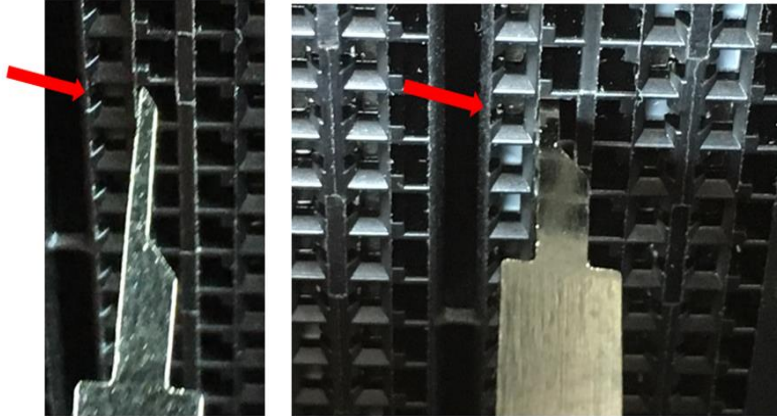
Contact STAR Center, or your Technical Assistance Center Via TechCONNECT or eCONTACT ticket if no solution is found



STAR ONLINE PUBLICATION



While pushing the wire up into connector to insure terminal locking tab is free, insert terminal removal tool as shown into release hole next to terminal being removed. With terminal released, gently pull down on wire to remove the terminal from the connector.



Once removed, inspect the terminal and wire crimp and repair/replace as necessary.

When repair is complete, reinstall terminal/wire fully into connector and reinstall secondary lock.



Fig 4

This document does not authorize warranty repairs. This communication documents a record of past experiences. STAR Online does not provide any conclusions about what is wrong with the vehicle. Rather, it captures all previous cases known that appear to be similar or related to the vehicle symptom / condition. You are the expert, and you are responsible for deciding on the appropriate course of action.

Contact STAR Center, or your Technical Assistance Center Via TechCONNECT or eCONTACT ticket if no solution is found



STAR ONLINE PUBLICATION



To ease reinstallation of cover assembly, ensure connector cover **latch** and connector **slide** lock are in their latched positions. Next, engage the covers end **tabs** and snap cover back into place on connector paying attention not to pinch wires when reinstalling. Lastly reinstall the covers zip tie.

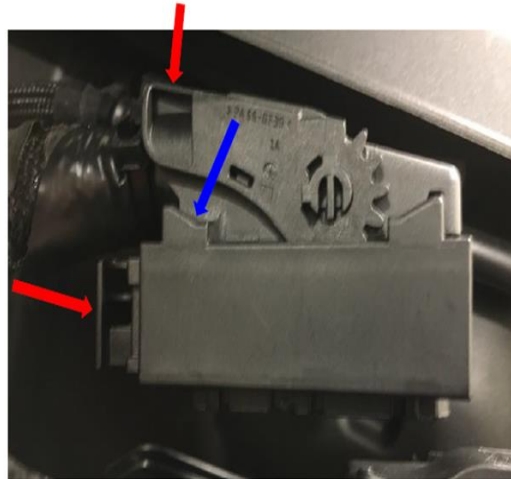


Fig 5

This document does not authorize warranty repairs. This communication documents a record of past experiences. STAR Online does not provide any conclusions about what is wrong with the vehicle. Rather, it captures all previous cases known that appear to be similar or related to the vehicle symptom / condition. You are the expert, and you are responsible for deciding on the appropriate course of action.

Contact STAR Center, or your Technical Assistance Center Via TechCONNECT or eCONTACT ticket if no solution is found