

Deformed Wireless Phone Charger Rubber Pad

Service Category Vehicle Interior

Section Power Outlets (int)

Market USA

Toyota Supports
 ASE Certification 

Applicability

YEAR(S)	MODEL(S)	ADDITIONAL INFORMATION
2016 - 2021	Tacoma	

Introduction

Some 2016 – 2021 model year Tacoma vehicles may exhibit a condition in which the wireless phone charger assembly rubber pad is deformed. Follow the Repair Procedure in this bulletin to address this condition.

Warranty Information

OP CODE	DESCRIPTION	TIME	OFF	T1	T2
EL1962	R & R the Mobile Wireless Charger Panel	0.9	861C0-04010	62	13

APPLICABLE WARRANTY

- This repair is covered under the Toyota Basic Warranty. This warranty is in effect for 36 months or 36,000 miles, whichever occurs first, from the vehicle's in-service date.
- Warranty application is limited to occurrence of the specified condition described in this bulletin.

Deformed Wireless Phone Charger Rubber Pad

Parts Information

PART NUMBER	PART NAME	QTY
861C4-04010	Panel, Mobile Wireless Charger	1

Repair Procedure

1. Confirm the condition exists.

Does the vehicle exhibit a condition in which the wireless phone charger assembly rubber pad is deformed?

- **YES** — Continue to step 2.
- **NO** — This bulletin does NOT apply. Continue diagnosis using the applicable Repair Manual.

Figure 1. Example of a Deformed Wireless Phone Charger Assembly Rubber Pad



Figure 2. Example of a Deformed Wireless Phone Charger Assembly Rubber Pad



Deformed Wireless Phone Charger Rubber Pad

Repair Procedure (continued)

2. Remove the wireless charger assembly.

NOTICE

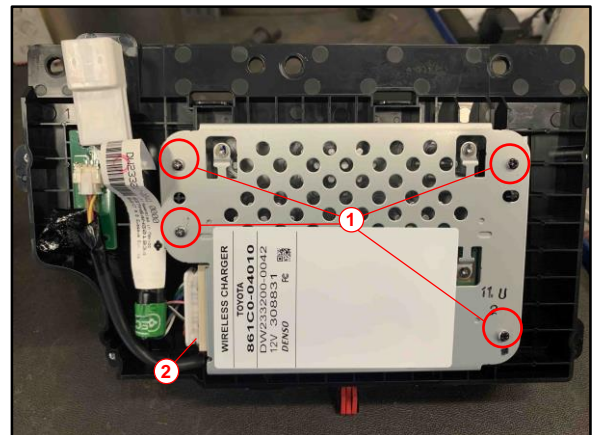
Ensure the engine is OFF.

Refer to TIS, applicable model and model year Repair Manual:

- [2016 – 2021](#) Tacoma:
Vehicle Interior – Power Outlets (Int.) – “Other System: Wireless Charger Assembly: Removal”

3. Remove the charger unit from the mobile wireless charger panel.
 - A. Remove the four screws.
 - B. Disconnect the electrical connector to remove the charger unit.

Figure 3. Bottom View of the Wireless Charger Assembly



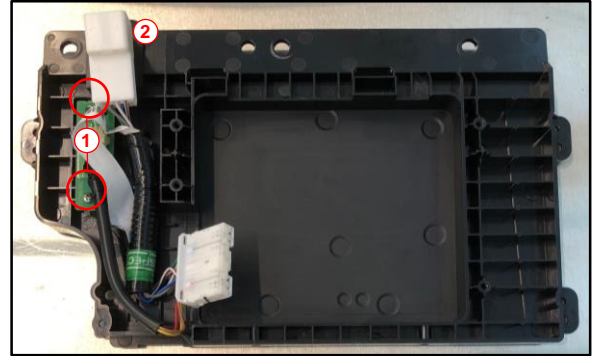
1	Screw
2	Electrical Connector

Deformed Wireless Phone Charger Rubber Pad

Repair Procedure (continued)

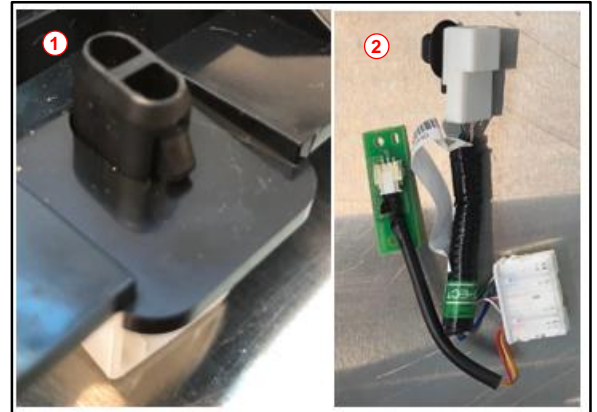
4. Remove the wiring sub-harness from the mobile wireless charger panel.
 - A. Remove the two screws.
 - B. Disengage connector clip to remove the wiring sub-harness from the wireless charger panel.

Figure 4.



1	Screw
2	Connector Clip

Figure 5.



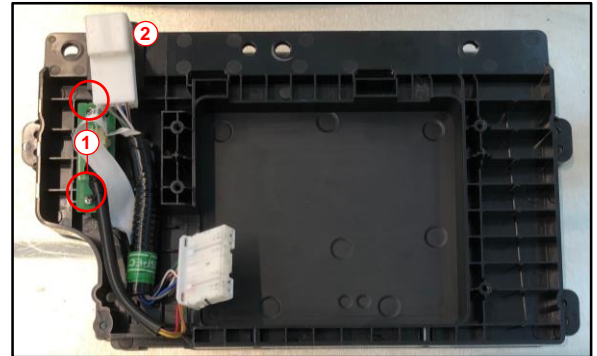
1	Connector Clip
2	Wiring Sub-harness

Deformed Wireless Phone Charger Rubber Pad

Repair Procedure (continued)

5. Install the wiring sub-harness to the NEW mobile wireless charger panel.
 - A. Install the two screws.
 - B. Engage the connector clip.

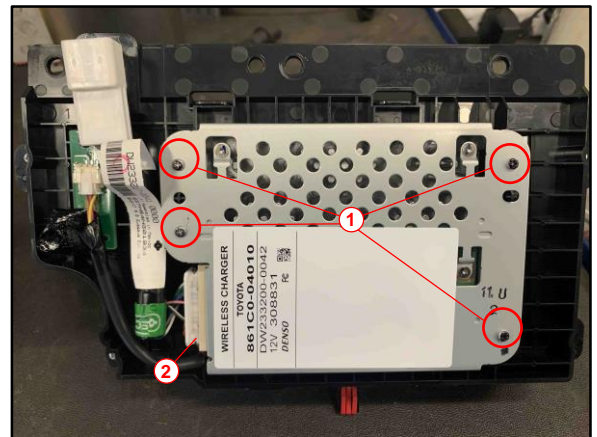
Figure 6.



1	Screw
2	Connector Clip

6. Install the charger unit to the NEW mobile wireless charger panel.
 - A. Install the four screws.
 - B. Install the electrical connector.

Figure 7. Bottom View of the Wireless Charger Assembly



1	Screw
2	Electrical Connector

Deformed Wireless Phone Charger Rubber Pad

Repair Procedure (continued)

NOTICE
 Ensure the wiring is positioned **ENTIRELY INSIDE** the mobile wireless charger to prevent damage.

Figure 8. Incorrect Wiring Position

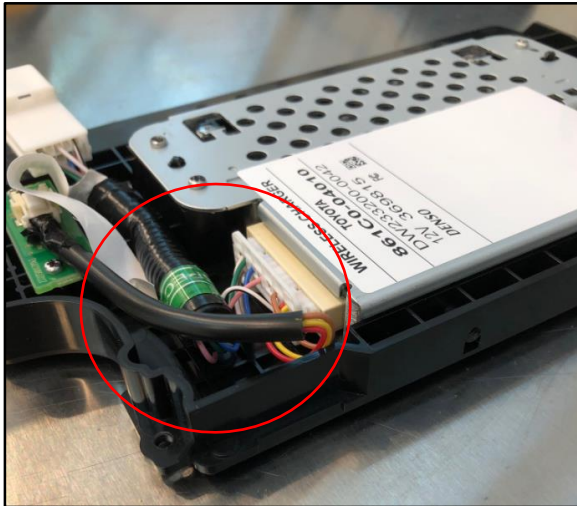
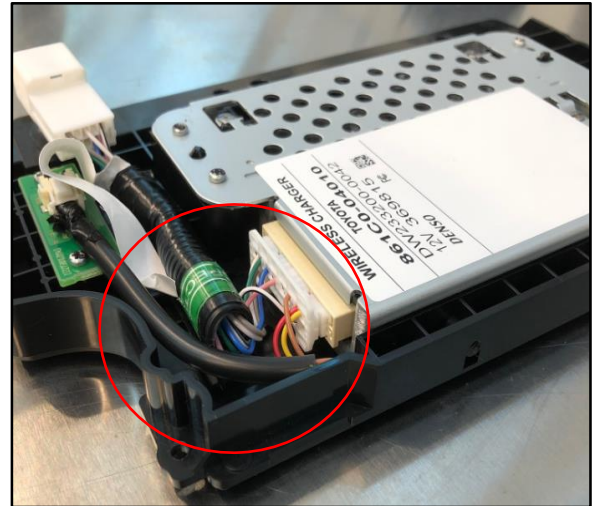


Figure 9. Correct Wiring Position



7. Install the wireless charger assembly.

Refer to TIS, applicable model and model year Repair Manual:

- [2016 – 2021 Tacoma](#):
Vehicle Interior – Power Outlets (Int.) – “Other System: Wireless Charger Assembly: Installation”

8. Conduct an operation check and confirm the condition is no longer present.

Refer to TIS, applicable model and model year Repair Manual:

- [2016 – 2021 Tacoma](#):
Vehicle Interior – Power Outlets (Int.) – “Other System: Wireless Charging System: Operation Check”