



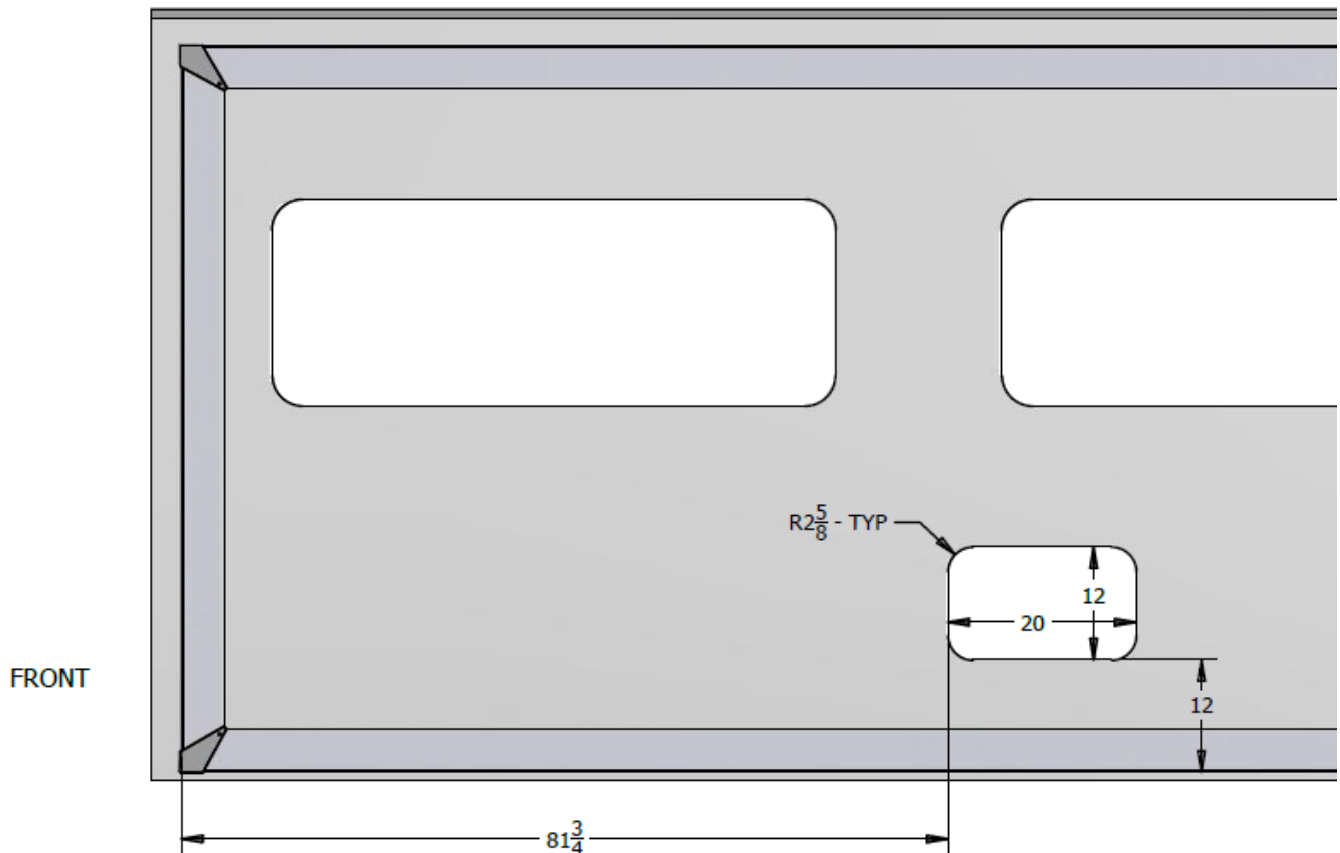
Murphy Bed – Access to Manual Over Ride

Bulletin Type:	Technical Service Bulletin TSB	Publication Date:	12-18-2020
Bulletin #:	20-028	Make(s):	Entegra Jayco
Job Code:	9803524	Model(s):	Qwest Melbourne Prestige
Flat Rate:	1 Hour	Model Year(s):	2020 & 2021

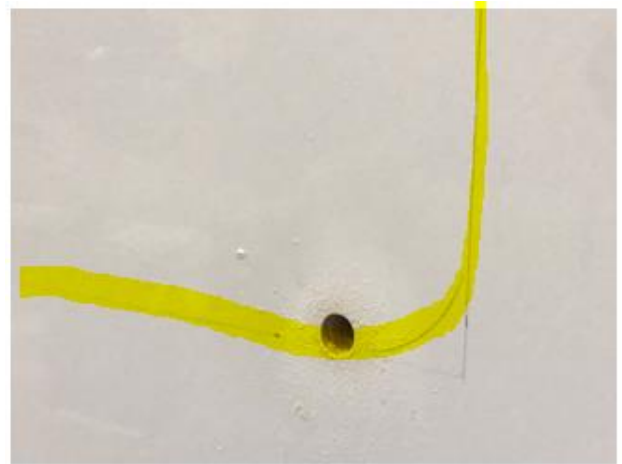
Incident:	Access to Murphy Bed Manual override omitted.
Affected Units:	2020 Melbourne Prestige L1ZR0052-0061 2020 Qwest L1ZR8051-8122 ZR9000-9053 2021 Qwest M1ZR8086-8091
	Parts Kit #: 20-028JM
	Parts Kit Contents: 1 - Access Door 64" Foam tape (10) 8x1 Quad flat head screws
Misc. Tools & Supplies:	Grease pencil and straight edge Drill with a 3/4" spade bit Sabre saw 5" hole saw Isopropyl alcohol Spray bottle with soapy water Putty knife Caulking gun Sealant Screw gun with quad bit

INSTRUCTIONS

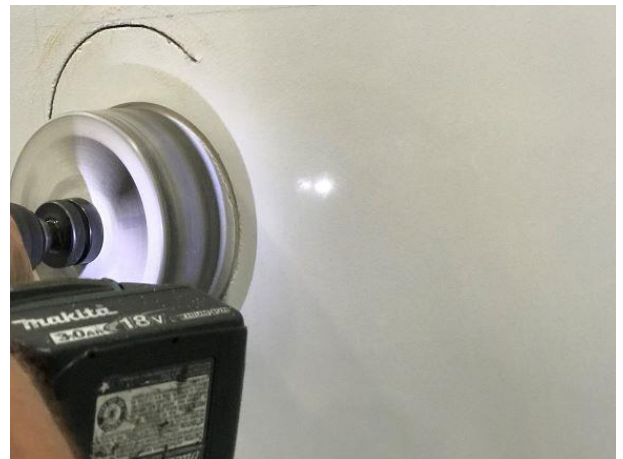
1. Measure and mark the location for the access door.
 - A. From the front of the slide out, measure back $81\frac{3}{4}$ " and mark the sidewall using a grease pencil.
 - B. From the bottom of the slide out, measure up and mark 12" and 24" (24" will be the top of the cutout).
 - C. Measuring from the mark in step 1A, measure 20" towards the back of the slide out, and mark using the grease pencil.
 - D. Using the straight edge, finish marking the cut out. You can hold the access door up to your marks to verify you have marked correctly, and to finish marking the radius corners by tracing them.



Using the 3/4" spade bit, drill a hole in the corner of the door cut out.



1. Using the 5" hole saw, cut a hole in within the marked area. This hole should be used to verify the area you have marked is in the correct location and you will not have interference (by wall structure) when you start to make the cut.



2. Recheck your marks according to the diagram in Step 1. Using a sabre saw, start at the pre-drilled hole in the corner and cut out the access door opening. Clean up any areas that would restrict to door from being inserted easily.



- Using Isopropyl alcohol, wipe the inside perimeter of the door frame. When the area has been cleaned and is dry, install the foam tape around the door frame perimeter.

Foam tape installed on the inside of the door frame



- Insert the door into the wall cut out.

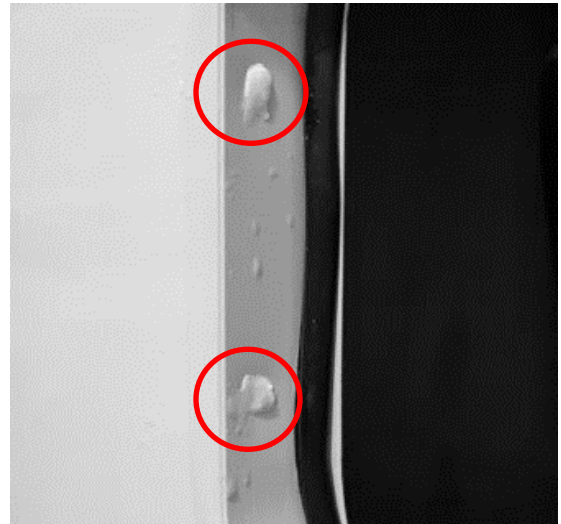


- Make sure door frame is securely and evenly seated in the cut out. Install the flathead screws in the pre-drilled holes on the door frame.

The screws should be installed as straight and as far in as possible to allow the door to close easily and without obstruction.



6. Add sealant to each screw head. Spray the sealant with soapy water. Using a putty knife or similar tool, smooth the sealant so it covers all of the screw area and does not interfere with the door closing.



7. Apply sealant to the outside perimeter of the door frame. Use a putty knife or similar tool to smooth out the sealant. Clean off any excess sealant.



Jayco's sole obligation under our limited warranty is to repair or replace defective materials and/or workmanship deemed our responsibility as determined by Jayco in our sole discretion. Jayco reserves the right to use new and/or remanufactured parts or materials of similar quality to complete any work, and to make parts and/or design changes as appropriate without notice to anyone. Jayco designs and/or materials changes are done without obligation to incorporate such changes in previously manufactured product. Jayco makes every reasonable effort to ensure field remedies will not adversely affect performance and/or safety of the unit. This field remedy is not intended to extend to future performance of this RV, or any of its materials, components or parts beyond the standard warranty period. The RV owner's obligation to notify Jayco, or one of its independent, authorized dealers, of a claimed defect does not modify any obligation placed on the RV owner to contact Jayco directly when attempting to pursue remedies under state or federal law. Jan. 2019.

903 South Main Street • P.O. Box 460 • Middlebury, IN 46540