

Software Update - v8.2.1/7.6.1

Date: November 19, 2020
Bulletin Name: FDM-TSIB-017
Model: Oshkosh S-Series
Units Affected: MY 2020 and newer Front Discharge Mixers

Purpose:

This bulletin provides general information about the v8.2.1/7.6.1 software update that enhances the vehicle's hydraulic system, auxiliary axles (tag, pusher, and Load-Span®), parking brake system, and drum speed.

Notice:

- This bulletin should be read and understood in its entirety before operating the vehicle.

Software Update General Information:

Hydraulic System

Software v8.2.1/7.6.1 includes the following updates to the vehicle's hydraulic system.

- Increased maximum radiator fan speed for improved cooling performance.
- Modified the hydraulic system caution and warning temperature set points based on increased cooling capacity.
- Fixed/eliminated the cooling fan speed valve open circuit fault.
- Limited cooling fan speed while operating the hydraulic chutes to improve chute performance.

Auxiliary Axles

Software v8.2.1/7.6.1 includes the following updates to the vehicle's auxiliary axles.

- Removed the speed interlock for raising and lowering pusher or tag axles.
- Added a splash screen to the overhead display to notify the operator the vehicle is traveling greater than 15 MPH with the Load-Span® tag axle (LSTA) in the UP position, see Figure 1.

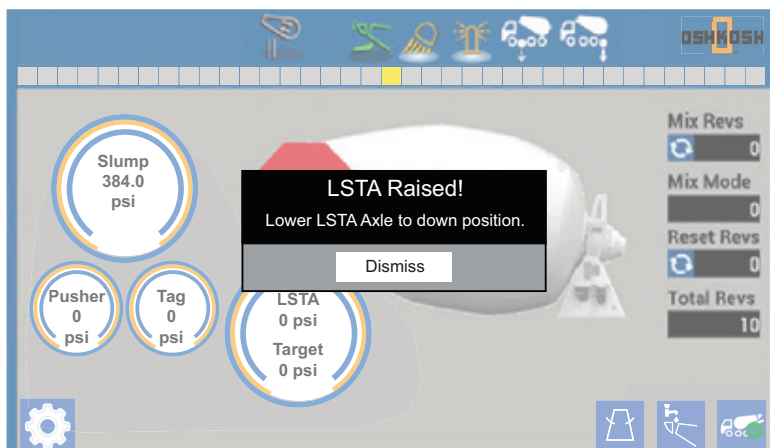


Figure 1 - LSTA Raised Splash Screen

- Added flashing down empty and down loaded lights on the instrument panel which will display when the vehicle is traveling greater than 15 MPH with the LSTA in the UP position, see Figure 2.

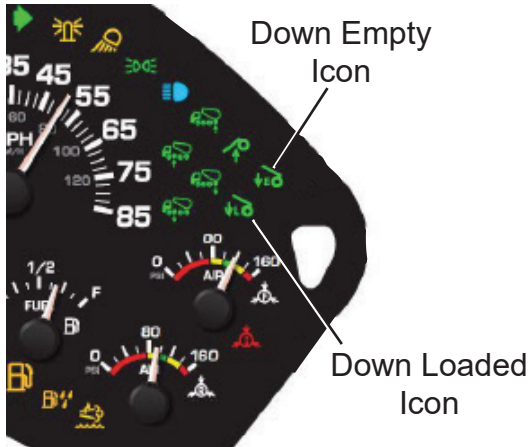


Figure 2 - Instrument Panel

- Added intermittent audible alarm when the vehicle is traveling greater than 25 MPH with the LSTA in the UP position.
- Removed the LSTA speed interlock for raising the auxiliary axle at speeds greater than 15 MPH.
- Removed the LSTA speed interlock for lowering the axle to Down Empty at speeds greater than 15 MPH.

Parking Brake

Software v8.2.1/7.6.1 includes the following updates to the vehicle's parking brake system.

- Added Park Brake Mode indicator to the overhead display to show the LSTA is de-pressurized when the parking brake is engaged, see Figure 3.

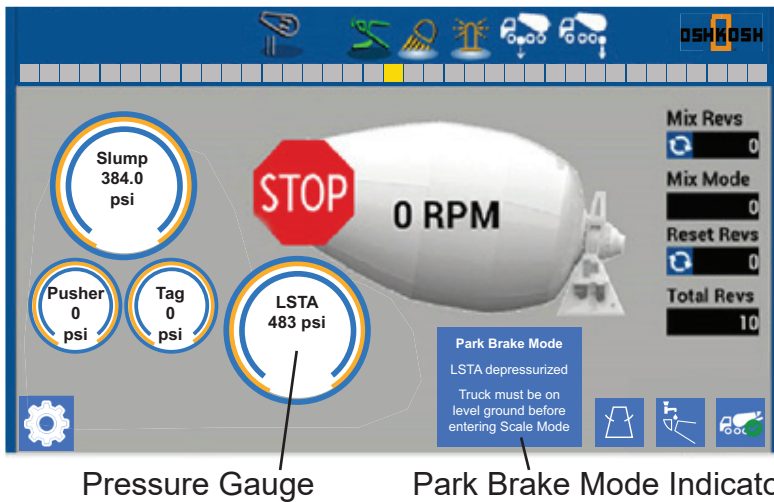


Figure 3 - Park Brake Mode

- Added Scale Mode indicator to show the vehicle is pressurizing the LSTA axle with the parking brake engaged, see Figure 4.

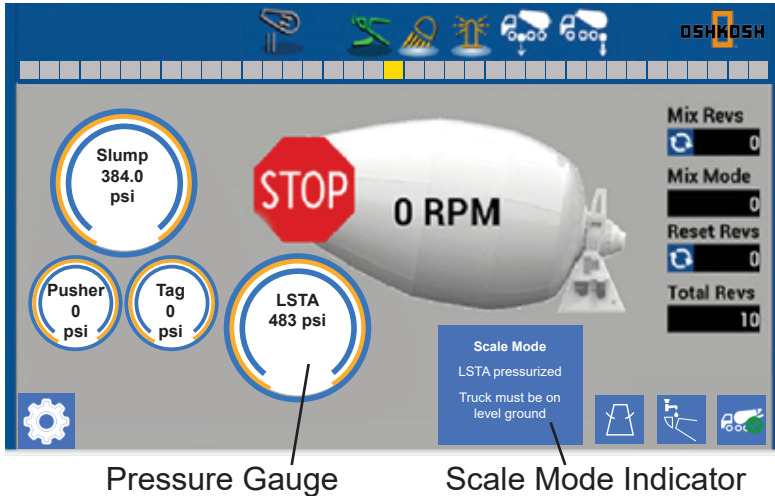
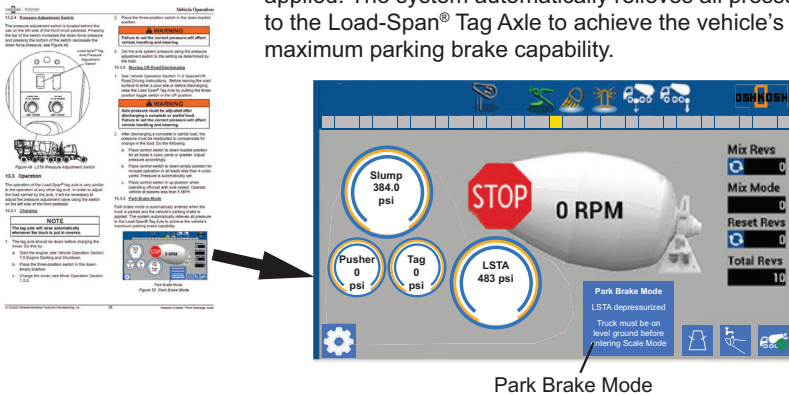


Figure 4 - Scale Mode

- Updated the operator manual to include operation of the Park Brake Mode and Scale Mode, see Figure 5.

13.3.3 Park Brake Mode

Park brake mode is automatically entered when the truck is parked and the vehicle's parking brake is applied. The system automatically relieves all pressure to the Load-Span® Tag Axle to achieve the vehicle's maximum parking brake capability.



13.3.4 Scale Mode

Scale mode is used to weigh/scale the truck and adjust the LSTA pressure setting when the truck is parked. The system increases the Load Span® Tag Axle pressure to the system's set value and allows the value to be adjusted.

Enter scale mode from park brake mode by pressing either the Down Empty or Down Loaded pushbutton on the driveline switch panel for 3 seconds.

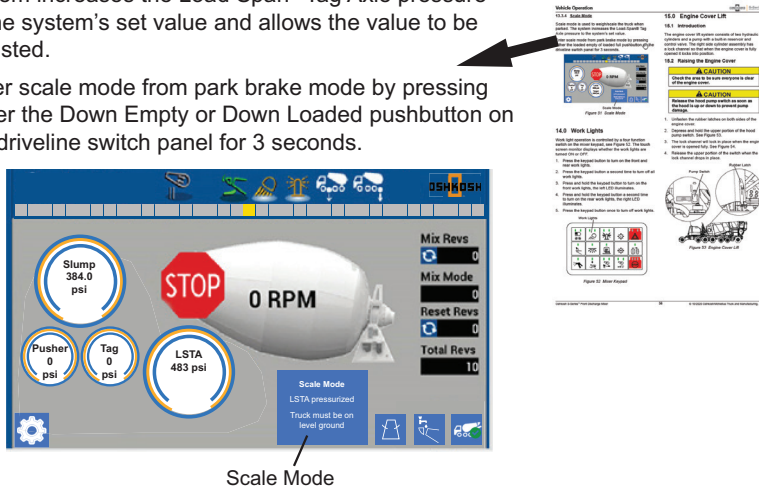


Figure 5 - Operator Manual Updates

- The calibration check period of the LSTA hydraulic system was lengthened and requires acceptance from the operator before initializing, see Figure 6.

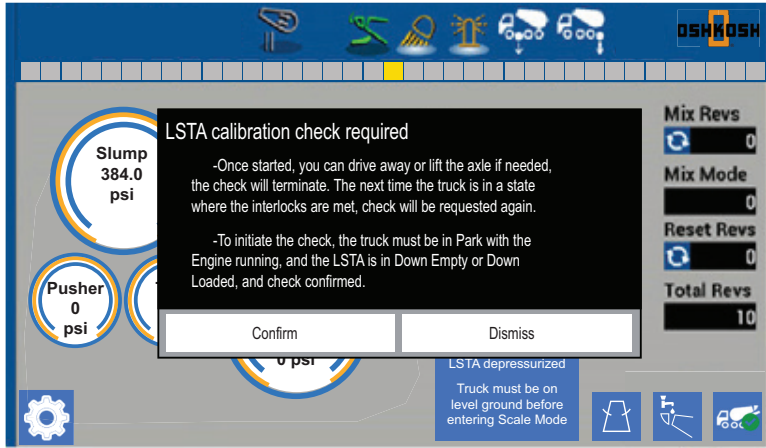


Figure 6 - LSTA Calibration

Verbage for the initial LSTA calibration, or calibration after servicing the LSTA was updated, see Figure 7.

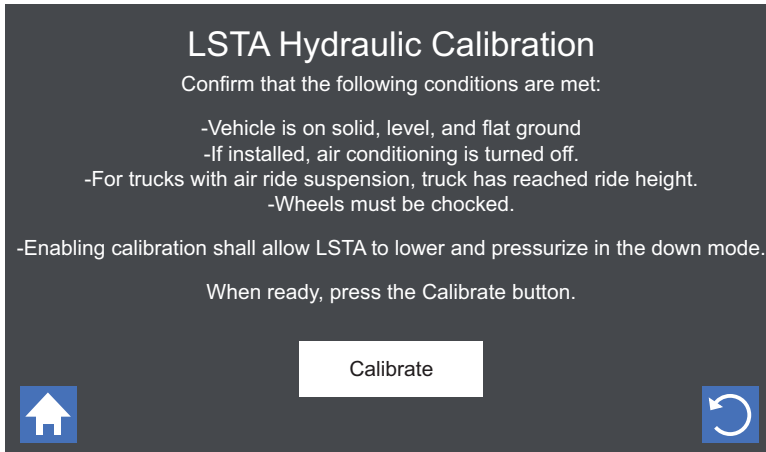


Figure 7 - LSTA Calibration

- Updated the operator manual to include paragraph stating the auxiliary axles must be raised prior to engaging the parking brake.

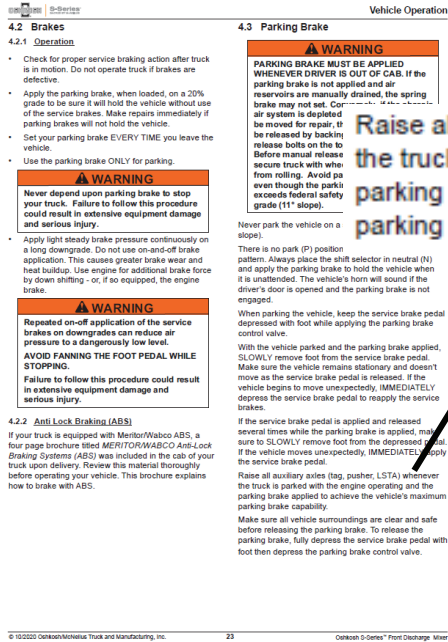


Figure 8 - Operator Manual Park Brake Auxiliary Axles Update

Drum Speed Increments

- Additional drum slow speed increments were added.
- Updated increments: 0.25, 0.5, 0.75, 1.0, 1.25, 1.5, 2.0.
- Previous increments were 0.5, 1.0, 1.5, 2.0.

First Box Slow Blink = 0.25
 First Box Intermittent Blink = 0.50
 First Box Fast Blink = 0.75

Drum Speed Status Bar

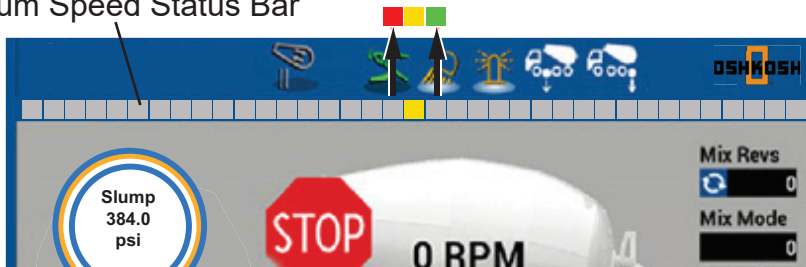


Figure 9 - Drum Speed

Continuous Improvement:

The change included in this document is part of the McNeilus Continuous Improvement Process.

McNeilus's quality policy is providing customer satisfaction through innovative products, dedicated service, and a constant focus on continuous improvement.



(888) 686-7278

www.streetsmartparts.com