



Technical Service Bulletin

Technical Service Bulletin: TSB150120

Released Date: 10-Nov-2020

INSITE™ Electronic Service Tool Error 5080 - Electronic Control Module (ECM) ROM-Booted or ROM-Booted in a Password Protected State

INSITE™ Electronic Service Tool Error 5080 - Electronic Control Module (ECM) ROM-Booted or ROM-Booted in a Password Protected State

Warranty Statement

The information in this document authorizes specific changes to the repair practice for failures covered under product warranty coverages.

Contents

Product Affected

- ISL G CM2180
- ISX12 G CM2180 EJ
- ISB6.7 G CM2180 B118
- ISB5.9G CM2180

Issue

Complaint of engine will not start. When attempting to communicate with INSITE™ electronic service tool, Error 5080 - Electronic Control Module (ECM) ROM-booted is displayed. Upon attempting to recalibrate to address the ROM-boot issue, the ECM is in a password protected state. The password protection is a result of a solder joint failure. When the solder joint fails it corrupts the portion of the memory where the password is stored, and the ECM goes into a password protected state. Corruption of the memory makes the ECM inoperative.

Verification

Connect to the ECM. See corresponding Service Manual. Refer to Procedure 019-031 (/qs3/pubsys2/xml/en/procedures/45/45-019-031-tr-islg.html) in section 19.

INSITE™ electronic service tool Error 5080 indicates the ECM is ROM-booted. See Figure 1 below.

Attempting to recalibrate the ROM-booted ECM results in password protection error prompt. See Figure 2 below.

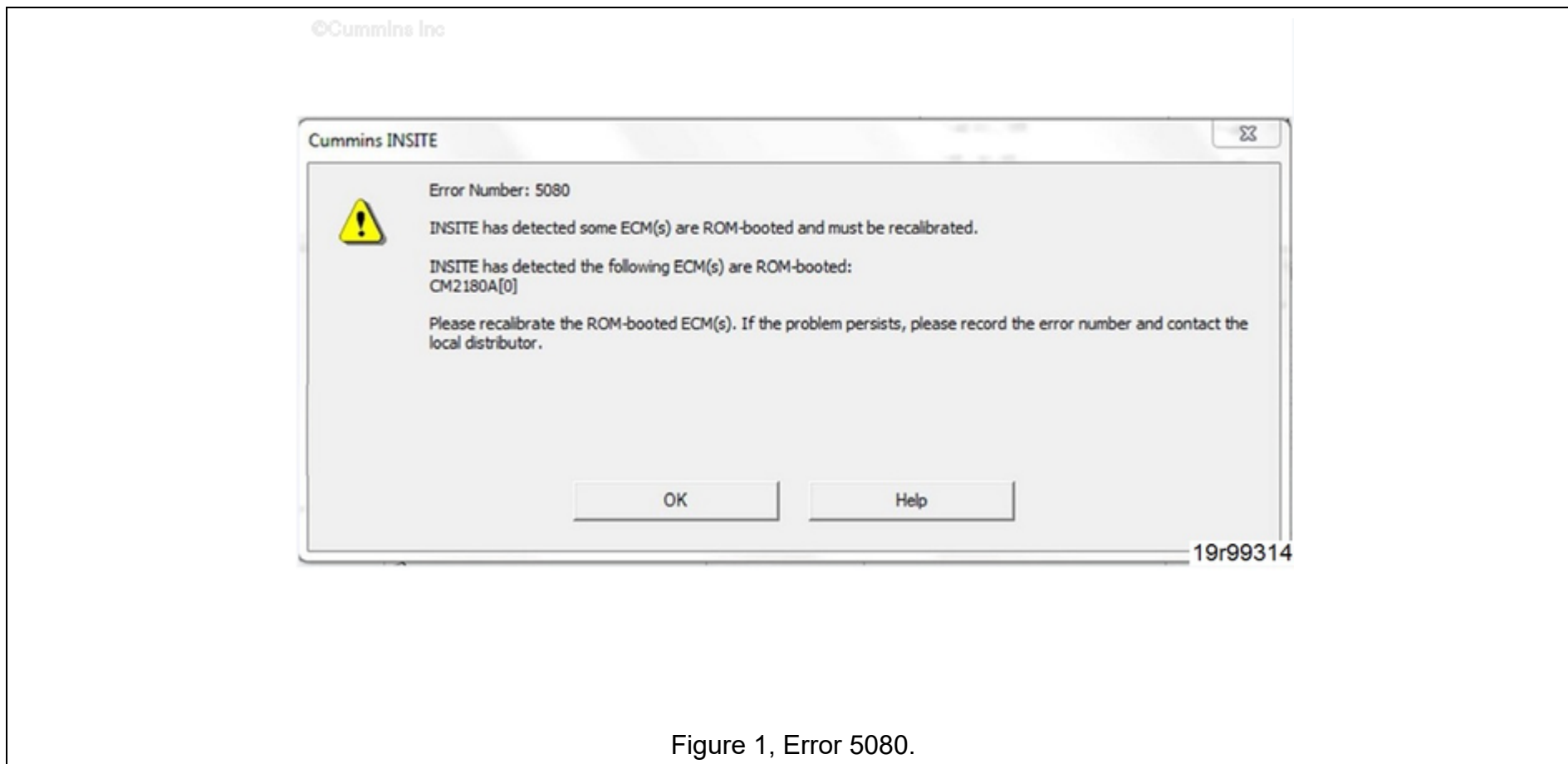


Figure 1, Error 5080.

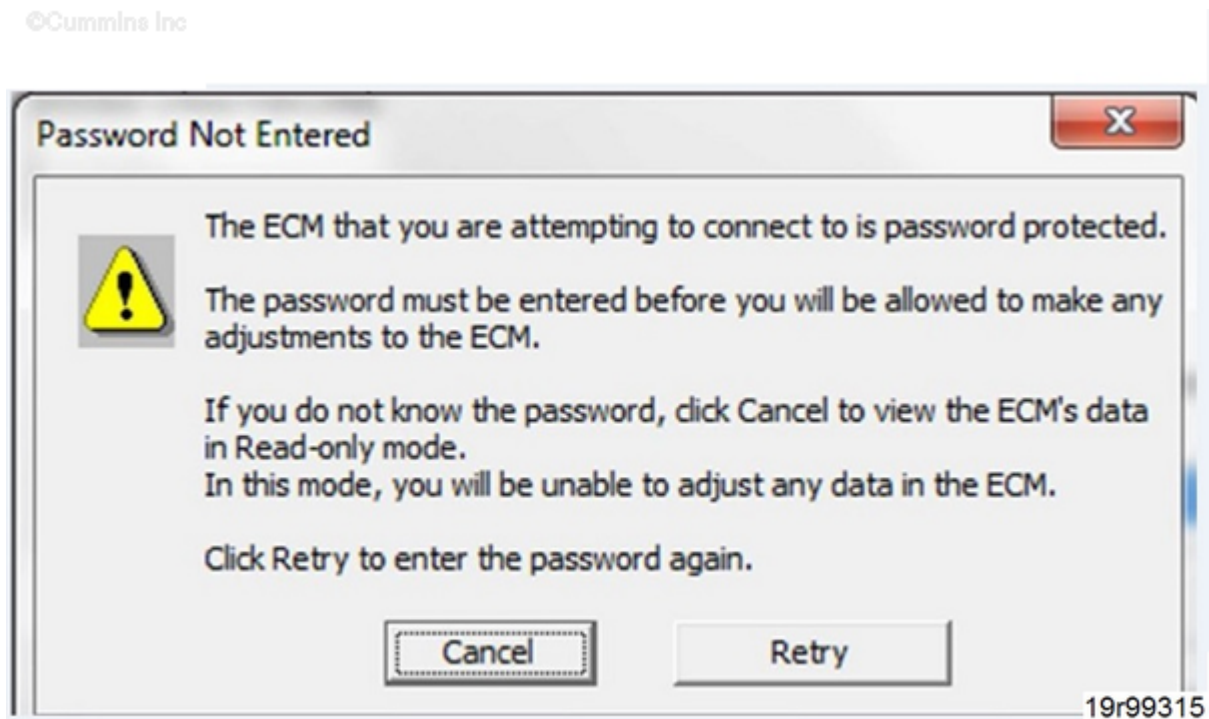


Figure 2, ECM In Password Protected State.

Resolution

If the ECM has been ROM booted, replace the ECM. Do **not** attempt to recover the ECM.

Reference Technical Service Bulletin, New Engine Control Module (ECM), TSB190110 for replacement ECM identification.

See corresponding Service Manual. Reference Procedure 019-031 in Section 19.

Note : This document does **not** include ROM-booted events that occur while updating the ECM calibration.

Inspect the engine and driveline mounts for signs of wear, see equipment manufacturer service information. If malfunctioning engine or driveline mounts are found, please contact the original equipment manufacturer (OEM).

ECM replacement is warrantable **only** if coverage is available for an ECM malfunction.

Table 1, Associated Procedures

Engine Model	Associated Procedures	Procedure Title	Procedure Number	Bulletin Number
ISX12 G CM2180 EJ		Electronic Control Module (ECM)	019-031	4310682
ISL G CM2180		Electronic Control Module (ECM)	019-031	4021649
ISB6.7 G CM2180 B118		Electronic Control Module (ECM)	019-031	5411104
ISB5.9 G CM2180		Electronic Control Module (ECM)	019-031	2883369

Document History

Date	Details
2015-7-24	Module Created
2019-6-10	Added Table 1.
2020-11-5	Updated Product Affected section. Added clarification about password protection. Added reference to TSB190110.

Last Modified: 10-Nov-2020
