

FLA COE
FLB COE
FLD Conventional
Business Class
FLC 112 Conventional

Century Class Conventional
Argosy
Cargo
Columbia
122SD and Coronado

Business Class M2
Cascadia
108SD/114SD
> New Cascadia

**Freightliner
Service Bulletin**

General Information

New Cascadia vehicles built from August 24, 2020 to September 18, 2020 were manufactured with a one-piece auxiliary dash panel. This design changed to a one-piece from a two-piece auxiliary dash panel complicated access to telematic wiring and made it more difficult to add mounts for electronic equipment and devices. These instructions detail how to remove the one-piece auxiliary dash panel and install a two-piece auxiliary dash panel.

Parts

Parts Table		
Part Number	Description	Quantity
A22-74137-001	Panel Gauge, Auxiliary Assy.	1

Table 1, Parts Table

Retrofit Instructions

1. Remove the switch panel (B-panel lower fascia). See [Fig. 1](#).
 - 1.1 Remove the parking brake lever and trailer air supply valve knobs. Rotate the knobs counter-clockwise to remove them.
 - 1.2 Using a plastic pry tool, detach the lower left corner of the panel from the dash and remove the panel.

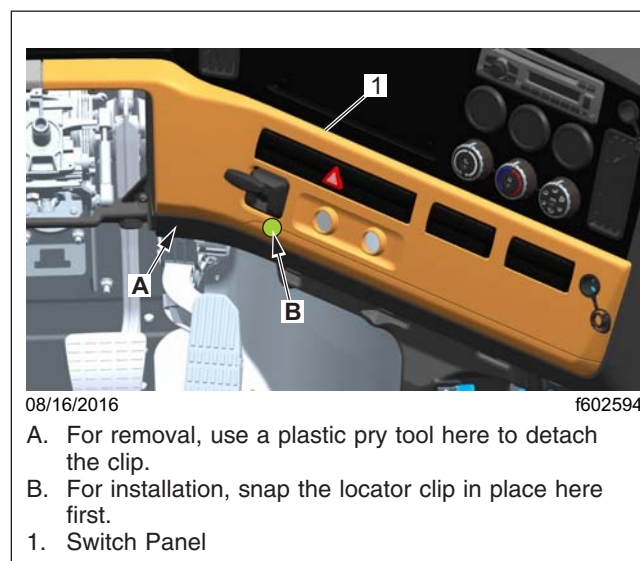


Fig. 1, Switch Panel Removal and Installation

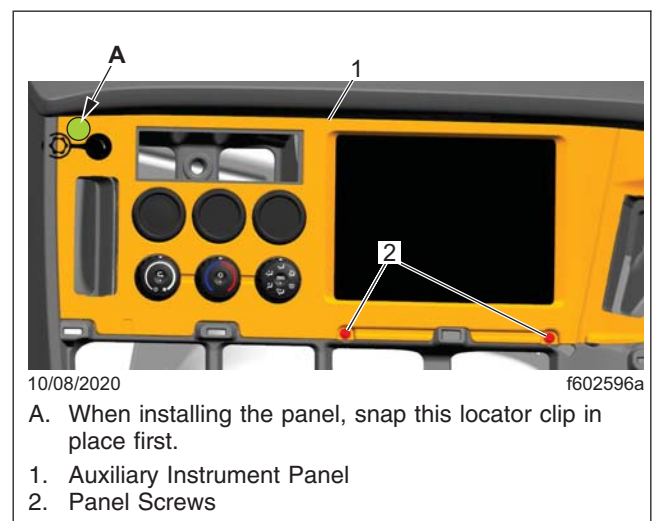


Fig. 2, Right-Hand Drive Auxiliary Instrument Panel Removal and Installation

2. Remove the auxiliary instrument panel (B-panel upper fascia). See [Fig. 2](#).
 - 2.1 Remove the two screws at the lower edge of the auxiliary instrument panel.
 - 2.2 Pull the auxiliary instrument panel clips loose from the dash. If needed, disconnect the wiring, then remove the panel. Tag the wiring for later identification if needed.

Freightliner Service Bulletin

FLA COE
FLB COE
FLD Conventional
Business Class
FLC 112 Conventional

Century Class Conventional
Argosy
Cargo
Columbia
122SD and Coronado

Business Class M2
Cascadia
108SD/114SD
> New Cascadia

3. Remove the four screws that attach the one-piece blank cover, shown in [Fig. 3](#), and remove the panel.
4. Install the mounting ring assembly and blank cover of the two-piece auxiliary dash panel. See [Fig. 4](#). Use the current auxiliary instrument panel in the vehicle as a template, if needed, to drill holes and route openings for the new blank cover panel.

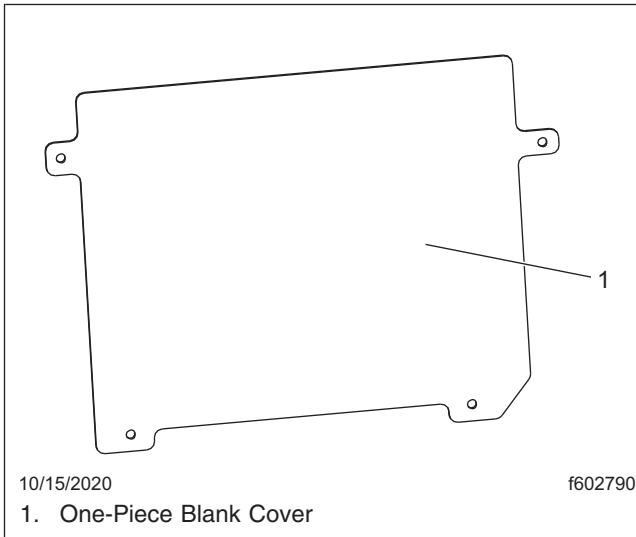


Fig. 3, One-Piece Blank Cover

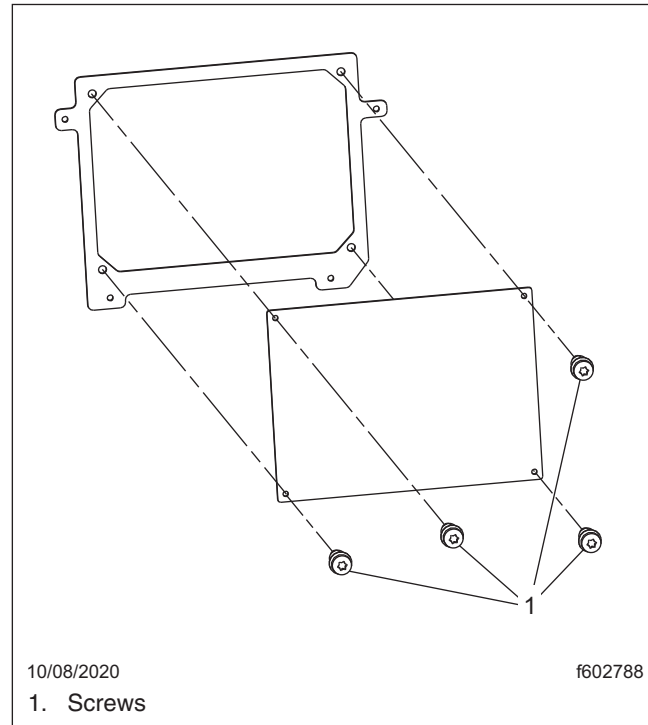


Fig. 4, Attaching the Cover to the Mounting Ring

5. Install the auxiliary instrument panel (B-panel upper fascia). See [Fig. 2](#).
 - 5.1 Snap the locator clip in place first and then the rest of the panel in place.
 - 5.2 Install the two screws at the lower edge of the panel.
6. Install the switch panel (B-panel lower fascia). See [Fig. 1](#).
 - 6.1 Snap the locator clip in place first and then the rest of the panel in place.
 - 6.2 Attach the parking brake lever and trailer air supply knobs.

Warranty

This procedure is warrantable only if the described condition exists and the repair is performed within the applicable base or extended coverage warranty period. If a failure is not found, this procedure is considered preventive and warranty does not apply.

Normal warranty applies. See [Table 2](#) for OWL VMRS codes and labor allowance information. Enter this service bulletin number in the *Service Bulletin #* field.

Retrofit of One-Piece to Two-Piece Auxiliary Dash Panel

60-172

FLA COE
 FLB COE
 FLD Conventional
 Business Class
 FLC 112 Conventional

Century Class Conventional
 Argosy
 Cargo
 Columbia
 122SD and Coronado

Business Class M2
 Cascadia
 108SD/114SD
 > New Cascadia

**Freightliner
 Service Bulletin**

OWL VMRS Codes and Labor Allowance					
Primary Failed Part	Component Code	Cause Code	SRT Code	Description	Time: Hours
INSTRUMENT PANEL, AUXILIARY	002-008-002	46	732-5010A	INSTRUMENT PANEL - AUXILIARY, R/R	0.3

Table 2, OWL VMRS Codes and Labor Allowance