
 HYUNDAI Technical Service Bulletin	GROUP Body	NUMBER 20-BD-013H-1
	DATE November, 2020	MODEL(S) Sonata (DN8a)
SUBJECT: WINDOW NOISE REPAIR		

This TSB supersedes 20-BD-013H by updating the service procedure, adding the parts information section, and adding operation codes for parts replacement.

Description: This bulletin describes the procedure to diagnose and repair a window exhibiting noise while lowering and raising.

Applicable Vehicles: Certain 2020MY Sonata (DN8a) vehicles produced from 10/22/19 – 6/11/20

Parts Information:

PART NUMBER	PART DESCRIPTION	IMAGE
83230-L1000	Rear door inside belt molding weather strip - LH	
83240-L1000	Rear door inside belt molding weather strip - RH	

Warranty Information:

MODEL	OP. CODE	OPERATION	OP. TIME	CAUSAL P/N	NATURE CODE	CAUSE CODE
Sonata (DN8a)	00DA11R0	Run-Assy DR FRT LH Window Glass Inspection & Repair	0.5 M/H	82530-L0000	Q57	ZZ7
	00DA11R1	Run-Assy DR RR LH Window Glass Inspection & Repair	0.4 M/H	83530-L0000		
	00DA11R2	Run-Assy DR FRT RH Window Glass Inspection & Repair	0.5 M/H	82540-L0000		
	00DA11R3	Run-Assy DR RR RH Window Glass Inspection & Repair	0.4 M/H	83540-L0000		
	00DA11R4	W/Strip Assy RR DR Belt I/S LH Replacement	0.3 M/H	83230-L1000		
	00DA11R5	W/Strip Assy RR DR Belt I/S RH Replacement	0.3 M/H	83240-L1000		
	00DA11R6	W/Strip Assy RR DR Belt I/S Both Replacement	0.4 M/H	83230-L1000		

NOTE 1: Submit Claim on Campaign Entry Screen.

NOTE 2: If a part is in need of replacement while performing the repair for this TSB and the affected part is still under warranty, please submit a separate claim using the same Repair Order. If the affected part is out of warranty, submit a Prior Approval Request for goodwill consideration prior to performing the work.

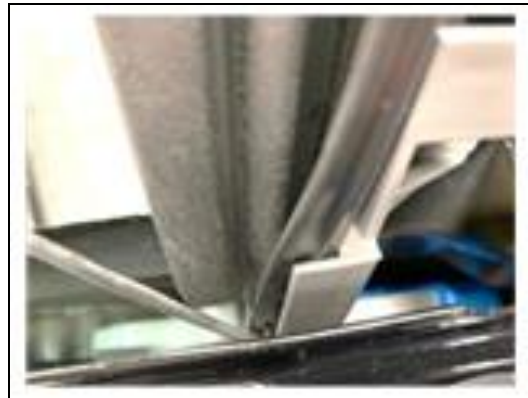
Circulate To: General Manager, Service Manager, Parts Manager, Warranty Manager, Service Advisors, Technicians, Body Shop Manager, Fleet Repair

Service Procedure:

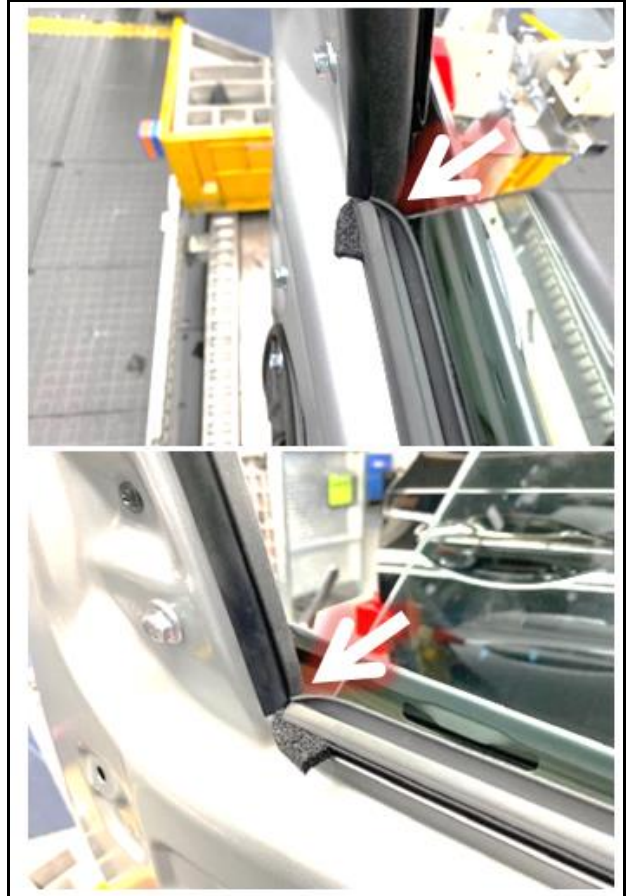
1. Inspect the glass run to determine if it is not seated.



2. Use a nylon/plastic trim removal tool to fully seat the glass run.



3. Inspect the belt molding and verify that the molding is fully seated and not underneath the glass run weather strip.



4. The belt molding should be aligned with the glass run weather strip.



5. Use an adhesive cleaner to remove any adhesive residue from the belt molding or window surface (including residue from the Monroney label adhesive on the rear window glass).

NOTICE

Belt molding must be completely removed to properly clean adhesive residue.



6. If the noise is still present after completing all the previous steps, replace the inside belt molding.
7. The service procedure is now complete.