

Washer Bottle Field Repair**Applicability:** MY2018-2019 Revero**Market Region:** All

PURPOSE: This bulletin outlines a field fix for cracked and leaking washer bottles. Washer bottles are to be replaced with new items when available.

When presented with a washer bottle leak, removal and replacements is advised. If an assembly is not available please remove and perform the repair described here.



Fig 1a

The procedure will require a soldering iron or plastic welding tools. These tools are readily available and are to be sourced locally.

Washer Bottle Field Repair**Applicability:** MY2018-2019 Revero**Market Region:** All

The severity of the crack may prevent this type of fix. Deformation of the pump mounting location or a defect that is too wide to be repaired will require replacement with a suitable assembly. As shown in (Fig 2a and 2b) this is a repairable defect.



Fig 2a



Fig 2b

Karma Automotive Bulletins and service documents are intended for use by experienced and trained Technicians. If you lack the skills, tools, equipment and a suitable workshop for any procedure described in this document, we suggest you leave such repairs to a Karma retailer and service provider. See your service provider for advice on whether your vehicle may benefit from the information contained within this document. The information contained in the Karma Bulletin is accurate at the date of publication. However, Karma Automotive regularly updates technical information. Please check with your Karma Automotive Retailer and Karma Automotive service provider that the bulletin you intend to use contains the latest available information.

Washer Bottle Field Repair

Applicability: MY2018-2019 Revero
Market Region: All

To maintain a clean repair, clean the heating tool to prevent dirt or other plastic or soldering material from contaminating the plastic. A dirty tool tip may provide an effective repair but will leave behind dirt or material in the repaired space.

With an available soldering iron or suitable plastic welding tool, heat the cracked area and melt material to widen the crack.

The width should not be greater than the tool tip.

This should be opened up in a wedge shape, so it is wider with excess material collected at the top edge of the crack.

The penetration should be about 70% of the washer bottle walls thickness.

The idea is to apply heat to the edges being joined in order to melt the plastic until it is liquid enough to blend the edges together.

Below in (Fig 3a) is a graphic representation of the process

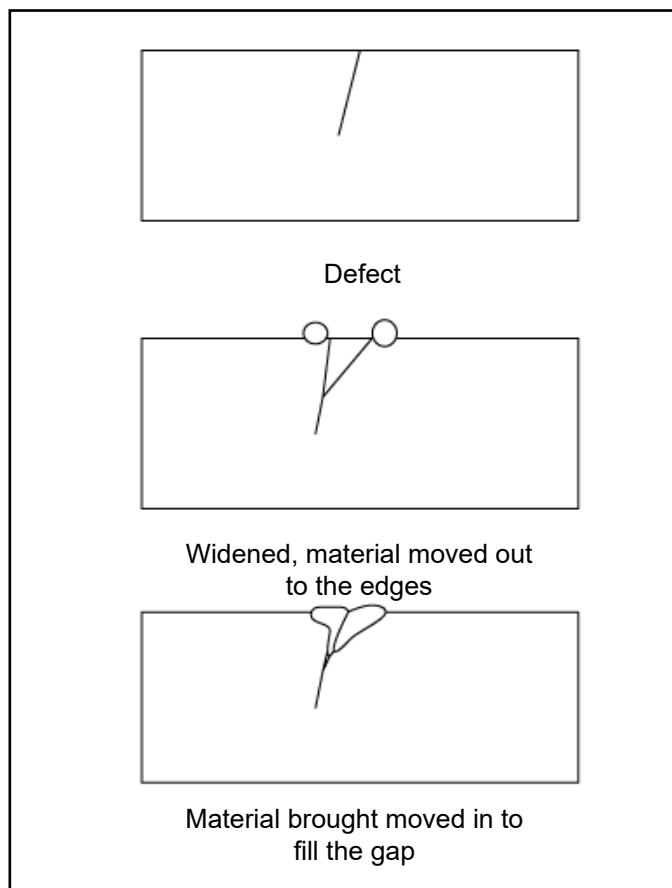


Fig 3a

Karma Automotive Bulletins and service documents are intended for use by experienced and trained Technicians. If you lack the skills, tools, equipment and a suitable workshop for any procedure described in this document, we suggest you leave such repairs to a Karma retailer and service provider. See your service provider for advice on whether your vehicle may benefit from the information contained within this document. The information contained in the Karma Bulletin is accurate at the date of publication. However, Karma Automotive regularly updates technical information. Please check with your Karma Automotive Retailer and Karma Automotive service provider that the bulletin you intend to use contains the latest available information.

Washer Bottle Field Repair**Applicability:** MY2018-2019 Revero**Market Region:** All

Clean off the tool tip with an abrasvie pad (“Scotch brite”) or steel wool pad. Wipe the surface of loose contaminates and immediately afterwards clean with isopropyl alcohol (rubbing alcohol) to prepare the surface for the repair procedure.

This is to minimize contamination into the melted plastic of the reservoir (fig 4a).



Fig 4a

Clean the surface to prepare for the procedure as well (fig 4b).

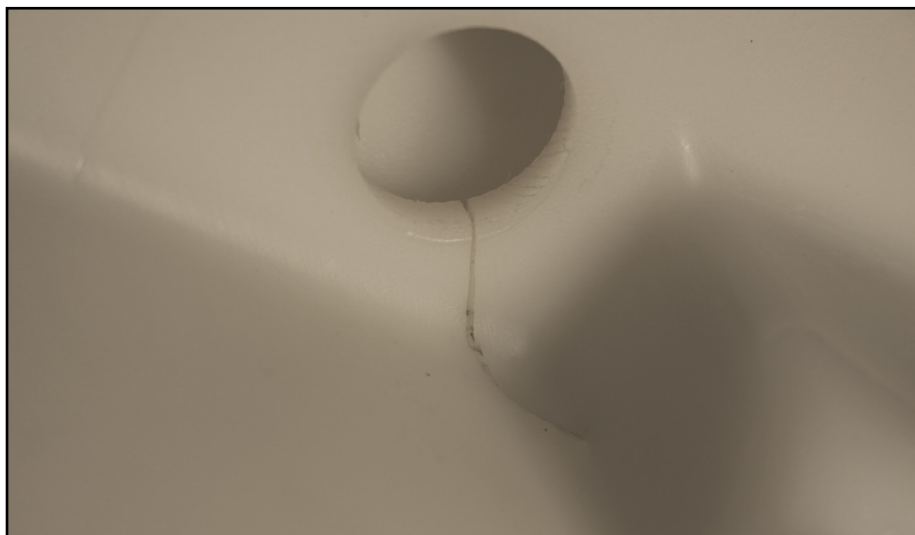


Fig 4b

Washer Bottle Field Repair**Applicability:** MY2018-2019 Revero**Market Region:** All

After heating up the iron, run it along the defect as described to begin melting the material. This is not a full penetration of the material thickness, but partial about 70% thickness (fig 5a and 5b).



Fig 5a



Fig 5b

Continuing moving the iron tip through the defect, bring material built up on edge down into the crevice (fig 6a) smooth out the opening for the pump to ensure reinstallation (Fig 6b). Reinstall the pump and fill the washer bottle with water to test for leaks. Attempt the repair again until repair is satisfactory.



Fig. 6a



Fig. 6b

Reinstall the washer fluid reservoir and refill with the appropriate fluid.

Karma Automotive Bulletins and service documents are intended for use by experienced and trained Technicians. If you lack the skills, tools, equipment and a suitable workshop for any procedure described in this document, we suggest you leave such repairs to a Karma retailer and service provider. See your service provider for advice on whether your vehicle may benefit from the information contained within this document. The information contained in the Karma Bulletin is accurate at the date of publication. However, Karma Automotive regularly updates technical information. Please check with your Karma Automotive Retailer and Karma Automotive service provider that the bulletin you intend to use contains the latest available information.

Washer Bottle Field Repair

Applicability: MY2018-2019 Revero

Market Region: All

PARTS REQUIRED:

PART NUMBER	DESCRIPTION	QTY
	N/A	

SHOP SUPPLIES:

DESCRIPTION
N/A

SPECIAL TOOLS and PARTS:

PART NUMBER	DESCRIPTION	QTY
		1

LABOR CODES:

CODE	DESCRIPTION	TIME	DEFECT CODE
90-90-05-05	Washer Reservoir Repair	0.5	90-90-05-16
90-90-05-00	Washer Bottle R & R	3.0	90-90-05-16

SUBLET:

CODE	DESCRIPTION	AMOUNT
N/A		

CAUSAL PART:

PART NUMBER	DESCRIPTION
C131178003007	Assembly - Washer Bottle Front

WARRANTY DISPOSITION:

Karma Automotive Bulletins and service documents are intended for use by experienced and trained Technicians. If you lack the skills, tools, equipment and a suitable workshop for any procedure described in this document, we suggest you leave such repairs to a Karma retailer and service provider. See your service provider for advice on whether your vehicle may benefit from the information contained within this document. The information contained in the Karma Bulletin is accurate at the date of publication. However, Karma Automotive regularly updates technical information. Please check with your Karma Automotive Retailer and Karma Automotive service provider that the bulletin you intend to use contains the latest available information.