



Technical Service Bulletin

SUBJECT:		No: TSB-20-23C-001	
CHECK ENGINE LIGHT ILLUMINATES (P1740)		DATE: October 2020	
		MODEL: See Below	
CIRCULATE TO:	<input type="checkbox"/> GENERAL MANAGER	<input checked="" type="checkbox"/> PARTS MANAGER	<input checked="" type="checkbox"/> TECHNICIAN
<input checked="" type="checkbox"/> SERVICE ADVISOR	<input checked="" type="checkbox"/> SERVICE MANAGER	<input checked="" type="checkbox"/> WARRANTY PROCESSOR	<input type="checkbox"/> SALES MANAGER

PURPOSE

The check engine light illuminates and shift shock occurs when shifting from neutral to drive and neutral to reverse, due to fail-safe function. As a result DTC P1740 will be stored during the solenoid valve monitoring operation.

This TSB instructs dealers to replace the CVT-ECU with a counter-measure part to change the setting of the solenoid valve voltage monitoring circuit.

AFFECTED VEHICLES

2015 - 2017 Outlander Sport / RVR

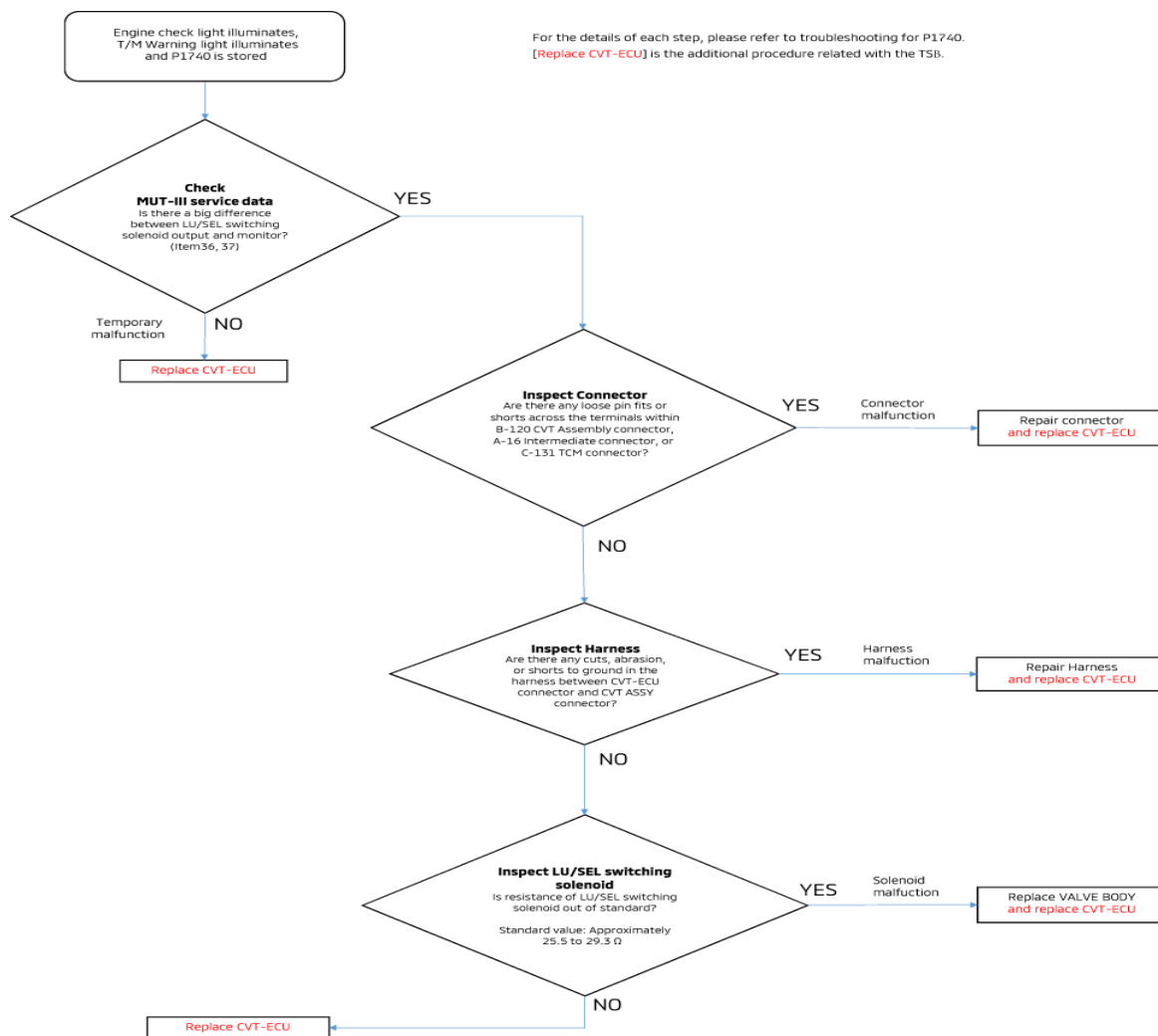


REPAIR PROCEDURE

After confirming warning light illumination and DTC: P1740 stored, follow the trouble shooting procedure for P1740 and replace the CVT-ECU with a counter-measure part. The counter-measure part changes the setting of the solenoid valve voltage monitoring circuit in the CVT-ECU.

Follow the work procedure illustration below for replacement of the CVT-ECU and refer to the applicable Service Manual for CVT-ECU re-learning procedure.

Mitsubishi Confidential C



PARTS INFORMATION

Order only Genuine Mitsubishi Parts.

MY	Part Name	Part Number		Qty
		<New>	<Old>	
2015	Control Unit, T/M	8631B910	8631B486	1
2016-17	Control Unit, T/M	8631B911	8631B498	1
2015-17	Valve Body	-	2800A109	1

WARRANTY INFORMATION

If an affected vehicle is reported with the described condition and within the warranty period, diagnose the condition, repair as described in this bulletin and submit a WSC Form A/Claim Type W, with the appropriate Labor Operation Code below:

Operation	Labor Op Code	Failure Code	Cause Code	Time Allowance
CVT-ECU replacement	233810CP	63F 490		0.7 hours
Valve Body replacement + CVT-ECU replacement	233810CQ			1.8 hours

Warranty Coverage: 5/60 Basic Coverage (Canada: 5/100)