

# Technical product information

<b>Topic</b>	New Continental GT - Wind noises
<b>Market area</b>	Bentley: worldwide (2WBE),Hongkong-Macau (5HK)
<b>Brand</b>	Bentley
<b>Transaction No.</b>	2051748/8
<b>Level</b>	EH
<b>Status</b>	Released for publishing
<b>Release date</b>	21-Oct-2020

## New customer code

Object of complaint	Complaint type	Position
whole vehicle -> vehicle areas -> window frame	noise, vibration -> wind noise	

# Vehicle data

## New Continental GT

### Sales types

Type	MY	Brand	Designation	Engine code	Gearbox code	Final drive code
3S3*	2018	E		*	*	*
3S3*	2019	E		*	*	*
3S3*	2020	E		*	*	*
3S3*	2021	E		*	*	*

# Documents

Document name
<a href="#">master.xml</a>
<a href="#">gtwindnoise.pdf</a>
<a href="#">markupsheet.pdf</a>

## Customer statement / workshop findings

Customer statement:

Wind noises at high speeds

Workshop findings:

Wind noises apparent at high speeds due to window glass settings/incorrectly fitted seals

## Technical background

Possible wind noises in the following areas shown in *Figure 1*

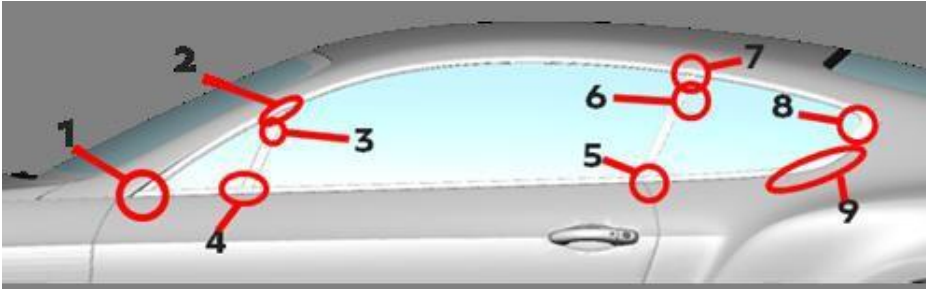


Figure 1

Location	Symptom	Concern onset speed
1. Bottom of quarter glass	Openness/Leakage	120km/h
2. Front Div. Bar Upper	Leakage	120 km/h
3. Front Div. Bar Moulding	Openness/Leakage	140 km/h
4. Front Div. Bar lower	Openness	140 km/h
5. Rear Div. Bar lower	Minor leakage	140km/h
6. Rear Div. Bar Upper to Glass	Openness	140 km/h
7. Rear Div. Bar Upper interface	Leakage	120 km/h
8. C-Post corner	Minor Leakage	140 km/h
9. Rear Qtr. Waist including Brightware	Minor Openness	140 km/h

Note: Both sides of the vehicle can be affected

## Production change

\*

## Measure

Identify the location of the wind noise as per *Figure 1*. Carry out visual and functional checks of the affected area then use the attached workshop instructions to help identify the possible cause/issue, applying the relevant fix where necessary

Fill in the attached form and also highlight the affected area on the vehicle, attach a copy of the form to the DISS

Attach pictures or videos of the affected area to support your claim

When finalising the DISS report please specify in what area the noise occurred and what repair you have carried out to rectify the issue as per the image/table in this TPI,

e.g. Area 6 – rear division upper to glass. Found rear division bar gap to glass too big – applied sealant to rear division bar

Do not carry out all repair procedures in the attached workshop instructions. Warranty will only cover the cost of the repair carried out in the affected area on your vehicle. Groundless claims may be debited

# GT Wind noise concerns – Fix documentation

## Wind noise concern areas



1. Front quarter glass area

2. Rear division bar area



# Front quarter glass area - Seal not fitted correctly

Issue - Division bar seal not fitted correctly



Poor condition – Top corner radius of division bar visible. Moulding should sit lower and cover this edge.



Poor condition - seal not hooked into div bar retention feature

# BY634 Wind noise Issues & Seal fit – Visual Inspection

## Issue - Division bar seal not fitted correctly – Example of Good Fit



Good condition – Top corner of division bar not visible. Moulding sits lower on division bar covering top edge



Good condition, seal not peeling up due to correct fit into div-bar retention hook.

# Front quarter glass area - Seal not fitted correctly

Fix – Strip qtr glass & re-assemble correctly

1. See aftersales documentation to remove the front quarter glass assembly.

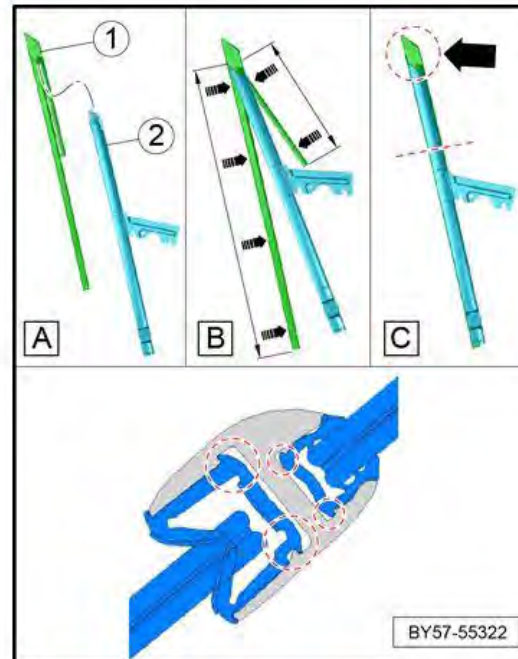
Refer to "Front door division bar - To remove and fit".

→ Rep. Gr.57

## Installation

Installation is the reverse of removal procedure, noting the following.

- [A]— Guide the seal -1- onto the division bar -2- as shown.
- [B]— Apply "P80" Rubber lubricant solution to the areas shown -arrows- on the seal -1-. Push the seal -1- fully into the channel of the division bar -2-.
- [C]— Ensure that the seal -1- is fully seated into the corresponding groove -circled- in the division bar -2-.
- Ensure both sides of the seal are fully pushed in and the rubber bulb latches into the division bar grooves as shown -circled-.



## Front quarter glass area - Not engaging seal

Issue – Front quarter glass not engaging seal



Poor condition - Edge of glass exposed, not in contact with seal.

# Front quarter glass area - Not engaging seal

## How to Check Front quarter glass seal interlock



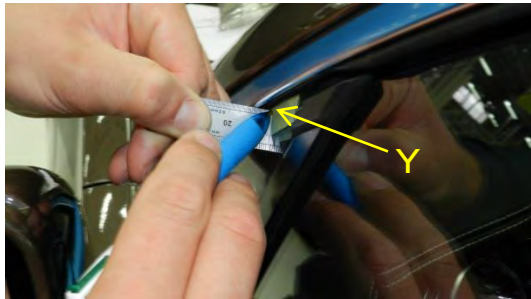
Apply masking tape to glass edge that provides coverage 50mm down from Front Quarter div-bar



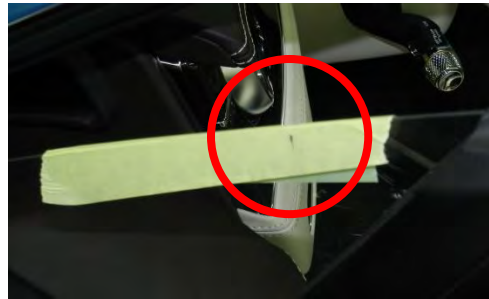
Mark point-X on tape 50mm down from front quarter div-bar



Align rule with 50mm point and edge of cantrail seal with rule edge perpendicular to glass surface.



Mark a point-Y on the tape aligned to the top corner of the rule.



Point-Y marked on the tape.



Check distance from point-Y to the top edge of glass. Distance should measure 2mm on glass set in the correct position

# Front quarter glass area - Not engaging seal

---

Fix – Remove door pad & adjust quarter glass assembly upwards

See aftersales documentation to re-set qtr glass

Refer to “Side glass - To set”. → Rep. Gr.64

## Rear quarter glass area – Seal folded

Issue – Top of seal 'folded' on itself behind door glass

Poor condition - seal folding on the edge of the door glass



# BY634 Wind noise Issues & Seal fit – Visual Inspection

Issue – Top of seal 'folded' on itself behind door glass – Correct Condition



Good condition - seal not folding and sits behind the door glass.

# Rear quarter glass area – Seal folded

## Fix – 1. Re-set seal condition

STEP-1



Ensure glass is dropped half way & apply tape to outer glass surface

STEP-2



Pull tape around seal as shown in image, pulling seal inboard to 're-set'

STEP-3



Pull tape around seal as shown in image, excessively pulling seal inboard

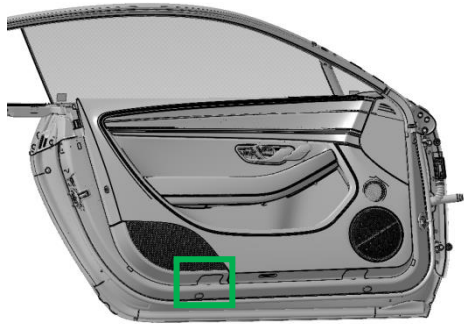
STEP-4



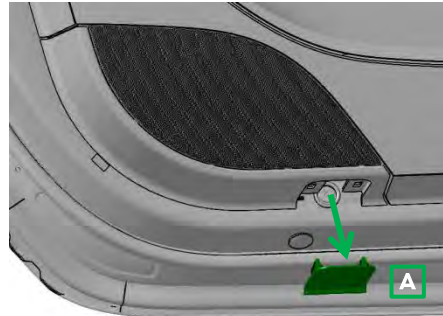
Tape to inside glass surface to ensure seal is pre-tensioned inboard. Leave to set over night

# Rear quarter glass area – Seal folded

## Fix – 2. Re-set door glass

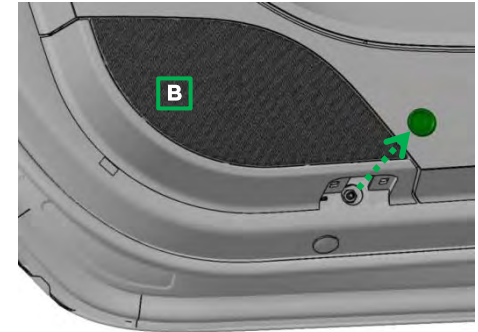


### STEP-5



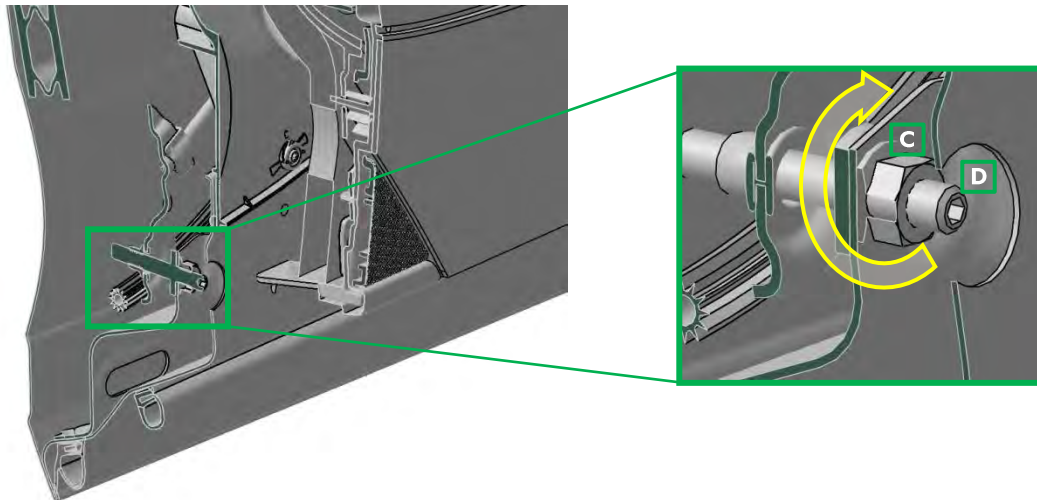
Remove access panel **A** to gain access to glass regulator adjustment screw.

### STEP-6



Remove grommet **B** to expose adjustment screw head.

### STEP-7



Loosen locking nut **C** and then turn adjustment screw **D** clockwise 2 turns to push top/rear edge of glass outboard. Tighten locking nut **C** after adjustment is complete. (Tool No 20421)

Check to see if issues resolved. If not repeat step 7

# Rear quarter glass area – Seal hat folded

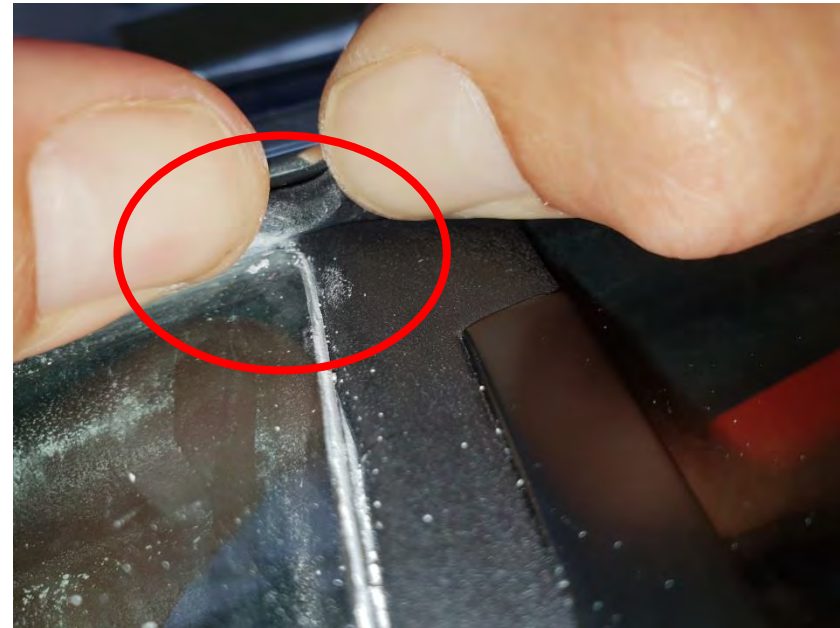
Issue – Hat feature folding



Division bar seal “hat” should not fold. ‘Hat’ will fold if rear quarter glass is set more than 1mm lower than door drop glass in Z

## Rear quarter glass area – Seal hat folded

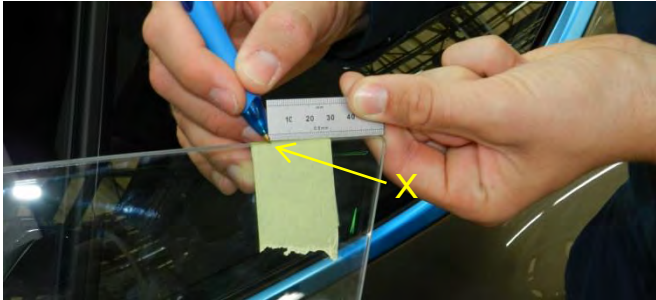
Issue – Door Glass Rear Corner & Rear Quarter Glass relationship



Div-bar seal "hat" should have a consistent touch condition with the top rear corner of the door glass and should not fold. 'Hat' will fold if rear quarter glass is set more than 1mm lower than door drop glass in Z

# Rear quarter glass area – Seal hat folded

## Check – Door Glass Rear Corner Interlock



1. Apply masking tape to glass edge that provides coverage 50mm down from Front Quarter div-bar and mark point-X 50mm along from corner of glass.



2. Align rule with 50mm point and edge of cantrail seal with rule edge perpendicular to glass surface.



3. Mark a point-Y on the tape aligned to the top corner of the rule.



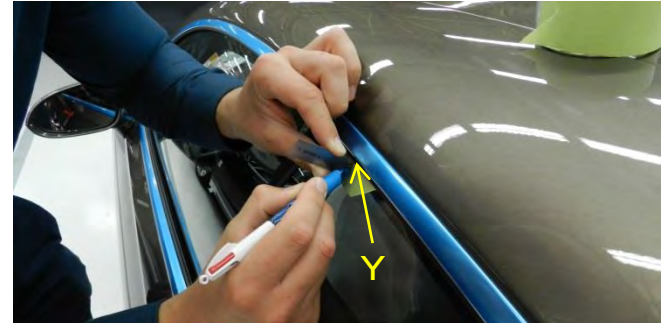
4. Check distance from point-Y to the top edge of glass. Distance should measure 5mm on glass set in the correct position.

# Rear quarter glass area – Seal hat folded

## Check – Rear Quarter Glass Front Corner Interlock



5. Apply masking tape to glass edge that provides coverage 50mm along from Front Quarter div-bar and mark point-X 50mm along from edge of div-bar.



6. Align rule with 50mm point and edge of cantrail seal with rule edge perpendicular to glass surface. Mark a point-Y on the tape aligned to the top corner of the rule.



7. Check distance from point-Y to the top edge of glass. Distance should measure 5mm on glass set in the correct position.



8. For best results both door and rear quarter glass should be set to the 5mm interlock dimension to ensure correct div-bar seal to door glass fit.

# Rear quarter glass area – Seal hat folded

---

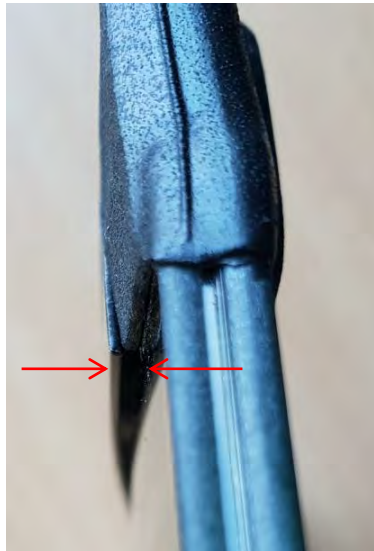
Fix – Set door glass level or 1mm lower than rear quarter glass

Re-set glass as per aftersales document in Z-axis.

Refer to “Side glass - To set”. → Rep. Gr.64

# Rear quarter glass area – Rear div bar seal folded

## Issue – Division bar gaps to glass



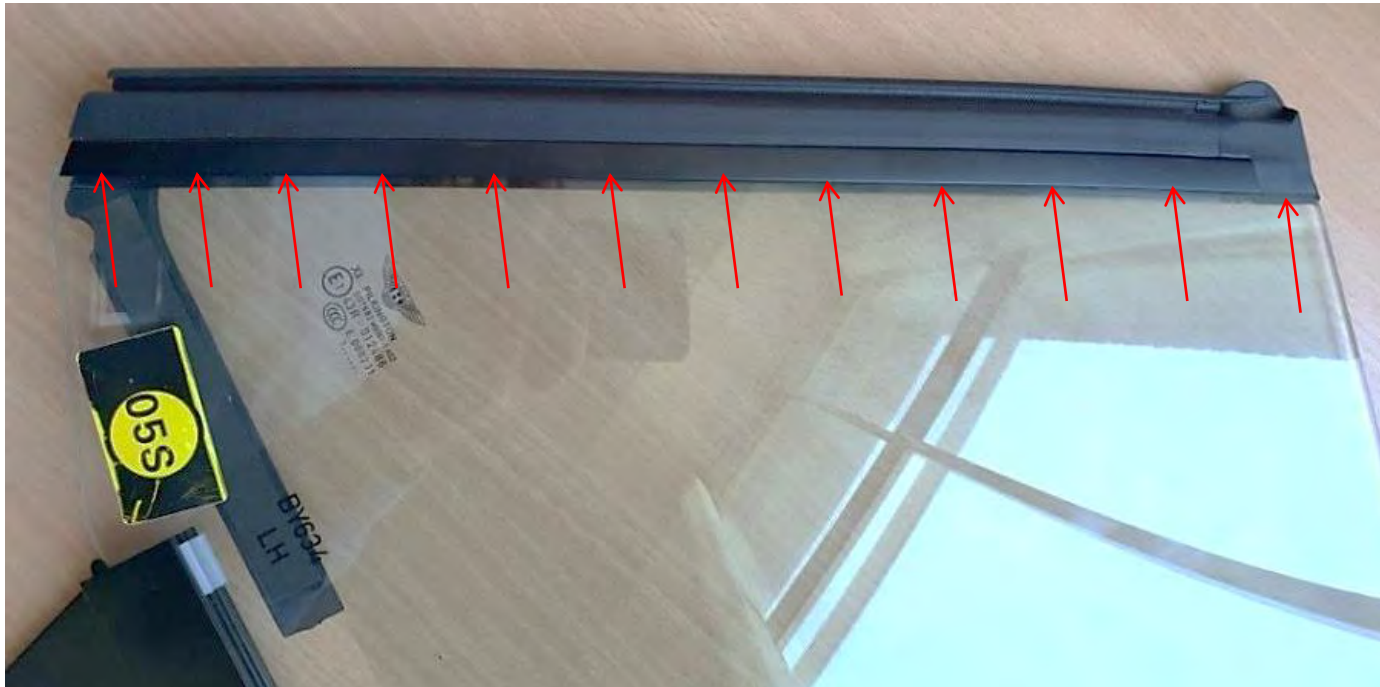
Rear division bar channel gaps to rear qtr glass



## Rear quarter glass area – Rear div bar seal folded

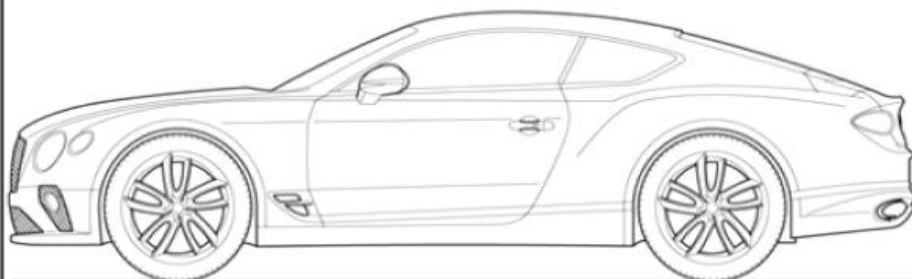
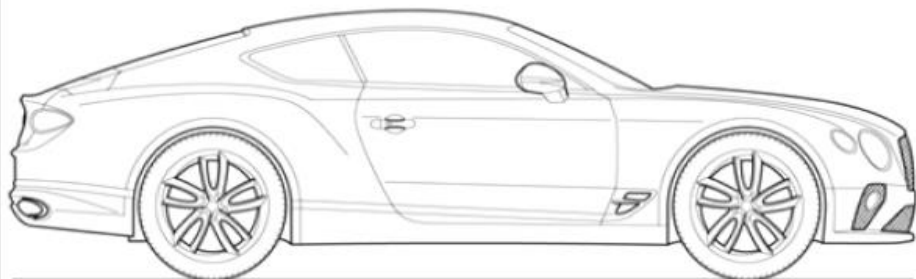
### Fix – Add sealant between division bar & glass

1. Sealant 'Betafil' to be applied down the length of the division bar with small nozzle to glass surface and cleaned with alcohol wipe / glass cleaner so that no sealant is protruding onto the glass surface



# New Continental GT - wind noise location

VIN -



*Location*

*Symptom*

*Concern onset speed*

--	--	--