

WLJ9 - Tightening Screws on Rear Spoiler Blade (Workshop Campaign)

Model Line: **Taycan (Y1A)**

Model Year: **As of 2020 up to 2021**

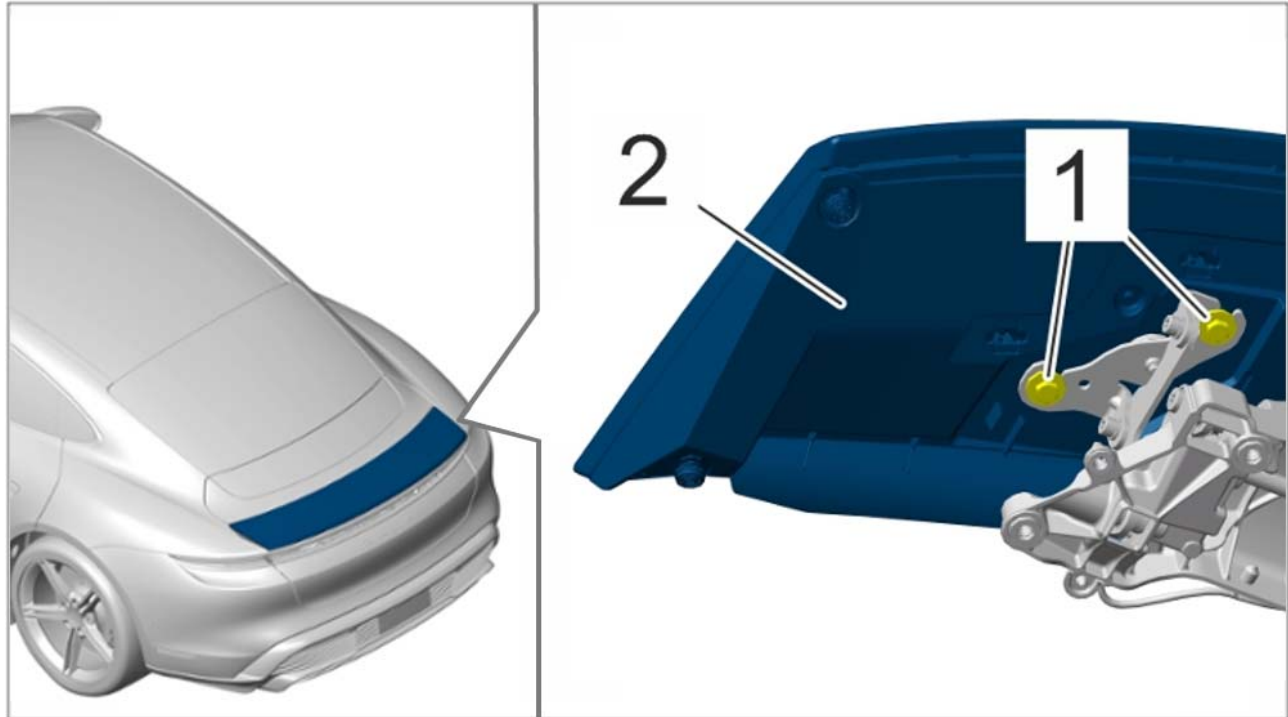
Subject: **Rear spoiler blade**

Information: **There is a possibility that a fastening screw on the rear spoiler blade threaded connection was not screwed to the drive unit for the rear spoiler using the prescribed tightening torque on the affected vehicles.**

As a result, the possibility that this fastening screw will loosen over the service life of the vehicle cannot be ruled out.

Remedial Action: Tighten screws on the rear spoiler blade to the prescribed tightening torque.

Affected Vehicles: Only vehicles assigned to the campaign (see also PCSS Vehicle Information). There are 113 vehicles affected by this campaign.

Installation
Position

Installation position of screws for rear spoiler blade

- 1 – Screws on rear spoiler blade (**tighten**)
- 2 – Rear spoiler blade

Required tools

- Tools:
- Battery charger with a current rating of **at least 90 A** and a **current and voltage-controlled charge map** for lithium starter batteries, e.g. **VAS 5908 Battery charger 90A**
 - Torque wrench, 2 – 10 Nm (1.5 – 7.5 ftlb.), e.g. **VAG 1783 Torque wrench, 2-10 Nm (1.5-7.5 ftlb.)**
 - **9900 - PIWIS Tester 3**
 - Plastic wedge
 - Setting gauge, e.g. **VAS 6937 Setting gauge**

Tighten screws on rear spoiler blade

- Work Procedure: 1 Check gap dimensions of the rear spoiler.
If the gap dimensions must be re-adjusted, this can be done in Step 4.
⇒ *Workshop Manual '5X00IN Gap dimensions'*

2 Extend rear spoiler.

2.1 Connect a suitable battery charger, e.g. **Battery charger 90A**, to the jump-start terminals in the luggage compartment and switch it on.

2.2 Connect 9900 - PIWIS Tester 3 to the vehicle and switched on the PIWIS Tester.

2.3 Establish operational readiness (switch on ignition).

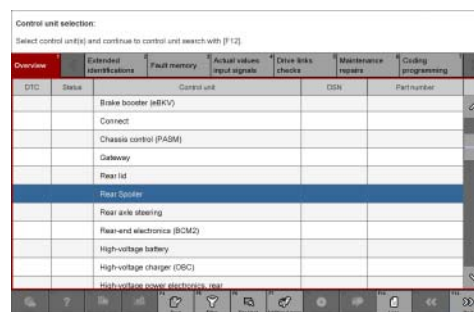
2.4 On the PIWIS Tester start screen, call up the 'Diagnostics' application.

2.5 Select the rear spoiler control unit in the control unit selection screen ('Overview' menu) and press •F12" ("Next") to confirm your selection ⇒ *Control unit selection - Rear spoiler*.

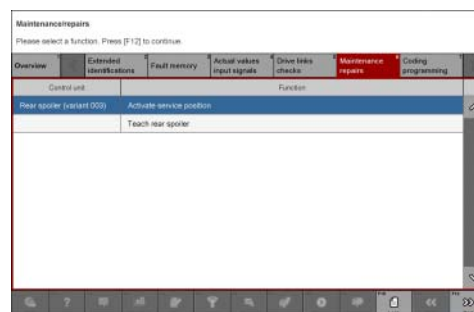
2.6 Once the rear spoiler control unit has been found and is displayed in the 'Overview', select the **'Maintenance/repairs'** menu.

2.7 Select the "Activate service position" function and press •F12" ("Next") to confirm your selection ⇒ *Activating service position*.

2.8 Follow the instructions on the Tester and activate service position by pressing •F8" ('Start').
The rear spoiler is then extended.



Control unit selection - Rear spoiler

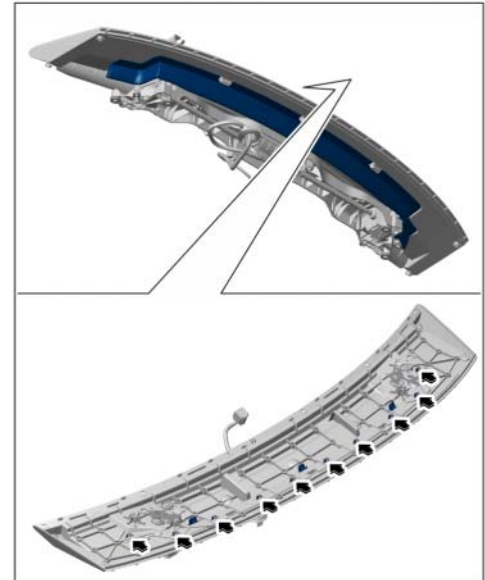


Activating service position

- Unclip cover on the underside of the rear spoiler at the marked positions ⇒ *Rear spoiler cover -Arrows-* using a suitable tool, e.g. a plastic wedge.

Only if the previously measured gap dimensions differ from the specifications:

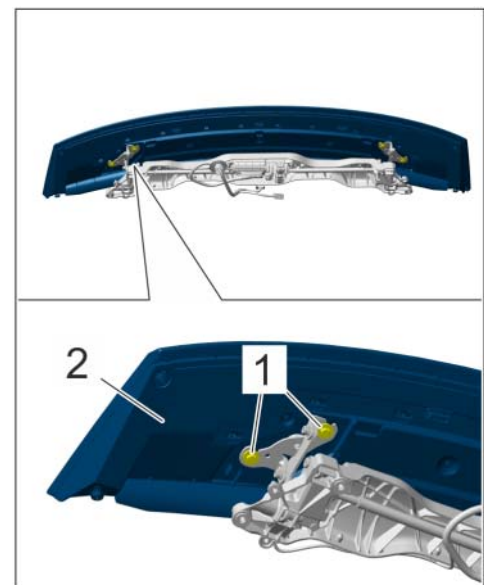
- Adjust gap dimensions of the rear spoiler.
⇒ *Workshop Manual '665815 Adjusting rear spoiler'*



Rear spoiler cover

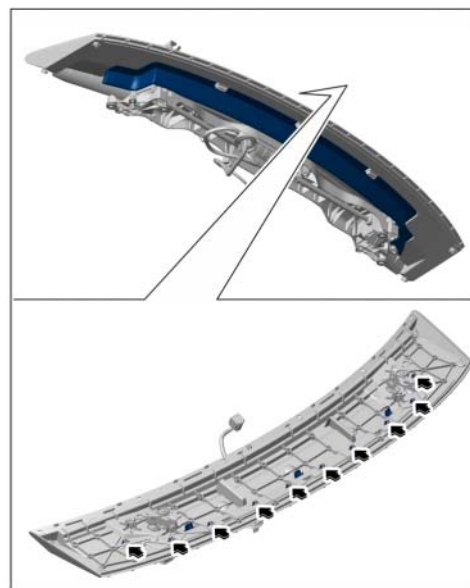
- Tighten screws on rear spoiler blade.
To do this, tighten the four fastening screws ⇒ *Screws on rear spoiler blade -1-* to the prescribed tightening torque.

Tightening torque 8 Nm (6 ftlb.)



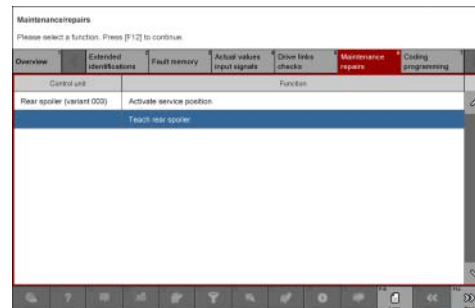
Screws on rear spoiler blade

- 6 Clip in rear spoiler cover at the marked positions ⇒ *Rear spoiler cover -Arrows-* again.
- 7 Retract rear spoiler again.
 - 7.1 Select the '**Maintenance/repairs**' menu under Rear spoiler control unit using the PIWIS Tester.



Rear spoiler cover

- 7.2 Select the "Teach rear spoiler" function and press •F12" ('Next') to confirm your selection ⇒ *Teaching rear spoiler*.
- 7.3 Follow the instructions on the Tester and confirm the service position by pressing •F8" ('Execute').
- 7.4 Once the rear spoiler has been taught and retracted fully, select the '**Overview**' menu to return to the control unit selection screen.



Teaching rear spoiler

- 8 End operational readiness (switch off ignition).
- 9 Disconnect the PIWIS Tester from the vehicle.
- 10 Switch off and disconnect the battery charger.
- 11 Enter the campaign in the Warranty and Maintenance booklet.

Warranty processing

Scope 1:

Working time:

Tightening screws on rear spoiler blade

Labor time: **69 TU**

Includes:

- Connecting and disconnecting battery charger
- Connecting and disconnecting PIWIS Tester
- Extending rear spoiler in service position
- Removing and installing rear spoiler cover
- Teaching rear spoiler
- Checking gap dimensions of rear spoiler and making adjustments if necessary

⇒ Damage Code WLJ9 066 000 1

Important Notice: Technical Bulletins issued by Porsche Cars North America, Inc. are intended only for use by professional automotive technicians who have attended Porsche service training courses. They are written to inform those technicians of conditions that may occur on some Porsche vehicles, or to provide information that could assist in the proper servicing of a vehicle. Porsche special tools may be necessary in order to perform certain operations identified in these bulletins. Use of tools and procedures other than those Porsche recommends in these bulletins may be detrimental to the safe operation of your vehicle, and may endanger the people working on it. Properly trained Porsche technicians have the equipment, tools, safety instructions, and know-how to do the job properly and safely. Part numbers listed in these bulletins are for reference only. The work procedures updated electronically in the Porsche PIWIS diagnostic and testing device take precedence and, in the event of a discrepancy, the work procedures in the PIWIS Tester are the ones that must be followed.

© 2020 Porsche Cars North America, Inc.