



SERVICE ADVISORY

Release Date: October 01, 2020

Communication #: ISA-20-03

Expiration Date: December 01, 2021

IND

Model Year(s): 2020

— Confidential and Proprietary —

VERSION: R01 (October 01, 2020)

IMPORTANT

If you are working with a printed copy, please verify you have the most current version of this document.

SUBJECT: ECU CALIBRATION REFLASH

PURPOSE

Indian Motorcycle has identified a potential calibration issue affecting some 111/116 c.i. motorcycles. In some instances, the throttle twist grip and Electronic Throttle Control (ETC) position signals do not align with the predicted position within the ECM and set a P1530 fault (throttle plausibility). When active, the P1530 fault causes the motorcycle to operate in a reduced power (limp) mode.

To address this, Indian Motorcycle is releasing an updated calibration. Calibrations for all model year 2020 111/116 c. i. North America motorcycles are now available. Calibrations for prior model years and International Models are currently under development. This Service Advisory will be updated to communicate their release when available.

AFFECTED MODELS

MODEL YEAR	MODELS	VEHICLE IDENTIFICATION NUMBER RANGE
2020	All Chief, Chieftain, Springfield, Roadmaster, and Vintage Models	Reference Unit Inquiry on the dealer website or the Service Communications list on the STOP site to lookup affected VINs.

WARRANTY CLAIM PARTS INFORMATION

2020 INDIAN MOTORCYCLE (111 CI / 116 CI)	
Advisory #	ISA-20-03
Claim Type	SA (Service Advisory)
Labor Allowance	0.3 hours (18 minutes)
Part Number / Description	0000541 (QTY 1) Bulletin Misc Labor
Parts Availability	NA
University of Polaris Video Training Required	NO

COVERAGE PERIOD

Coverage will begin on October 01, 2020. Coverage will expire on December 01, 2021.

FEEDBACK FORM

A feedback form has been created for the technician to provide Polaris with an overall satisfaction rating for the instructions, provide comments on your experience or upload pictures/video. This feedback form is viewable on a mobile device by scanning the QR code or by clicking **HERE** if viewing this document electronically.



ECU REPROGRAMMING PROCEDURE

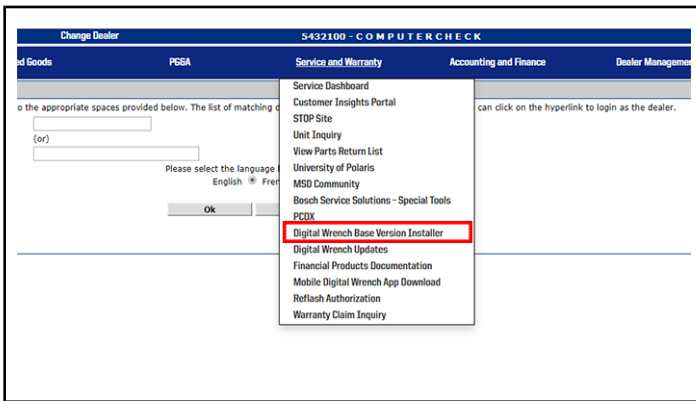
1. Verify that Digital Wrench version 4.2 Update 09/29/2020 or later has been installed on your PC or laptop and proceed to step 6.

If you do not have Version 4.2 – Update 09/29/2020 or later installed, you must first download it before proceeding with the reflash.

NOTICE

If you do not have Digital Wrench installed on your computer, you must first download the **Digital Wrench Base Version Installer (STEP 2)**.

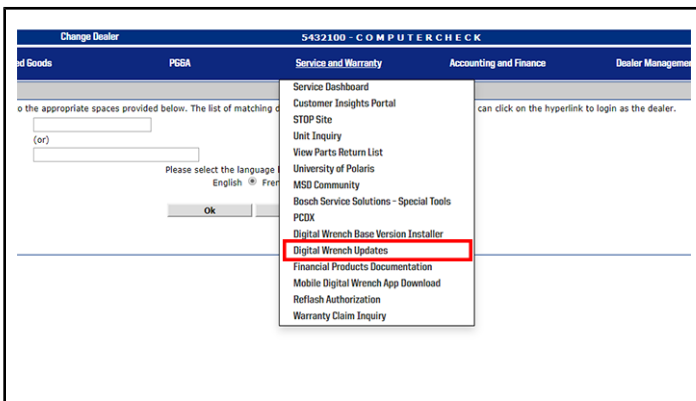
2. To download Digital Wrench Base Version, go to your dealer homepage and select **Digital Wrench Base Version Installer** from the **Service and Warranty** dropdown menu and download.



NOTICE

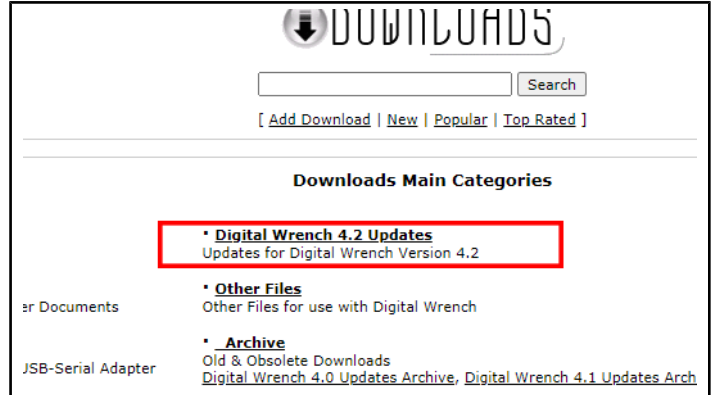
International Subsidiaries and Distributors use the **Digital Wrench Subscriptions** link to purchase and update your digital wrench software.

3. Once the Base Version is installed, go to your dealer homepage and select **Digital Wrench Updates** from the **Service and Warranty** dropdown menu.



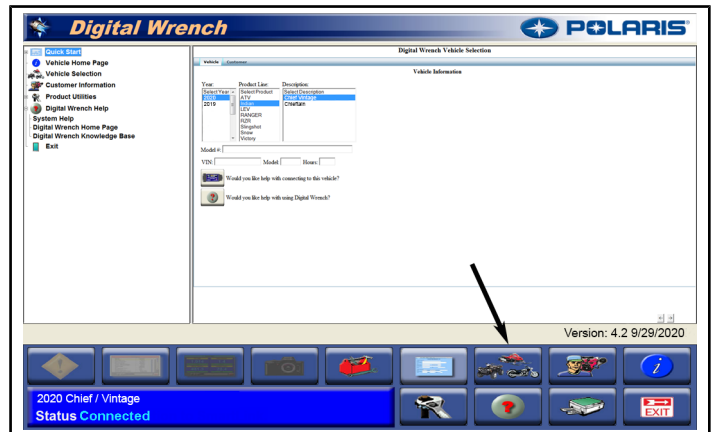
4. Click on **Digital Wrench Version 4.2 Updates**.

5. Download and install **Digital Wrench Version 4.2 – Update 09/29/2020 or higher**.



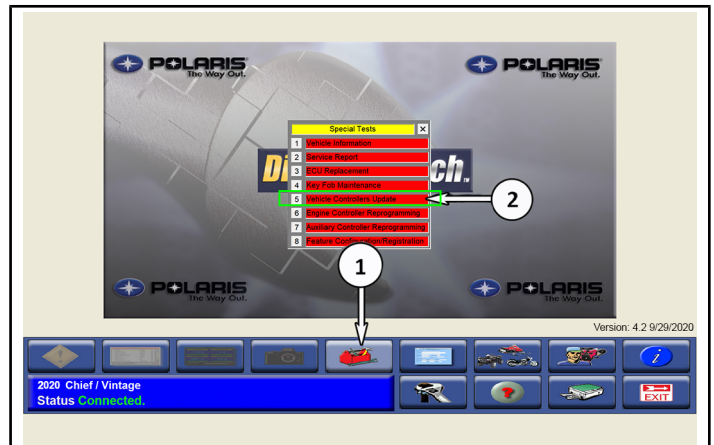
6. Connect SmartLink / MultiLink XP cables to PC and vehicle.

7. Open the Digital Wrench program.



8. Select the model year, product line, and vehicle description by selecting the “Change Vehicle Type” icon .

9. Select the **Special Test Tab** ①.



10. Select **Vehicle Controller Update** ②.

IMPORTANT

Use of Engine Controller Reprogramming instead of Vehicle Controllers Update will result in loss of stage calibration.

NOTICE

Digital Wrench will automatically identify current software levels and determine which modules require software updates.

IMPORTANT

Make sure the vehicle battery is fully charged or connected to a battery charger before proceeding.

STAGE CALIBRATION: If a motorcycle is equipped with an Indian Motorcycle stage calibration, Digital Wrench will identify and maintain the upgraded software calibration.

⚠ CAUTION

The VCM update procedure will take you through **TWO** separate reprogramming procedures.

- Boot Mode
- Reflash Application

During the reflash process the gauge and all indicators will power down. Each procedure must be completed in sequence or the VCM will not function.

11. Follow the on-screen prompts until all control modules have been updated.
12. Once the flash is complete, hit the continue button and leave Digital Wrench connected and ignition powered ON. Do **NOT** touch the unit for 35 seconds.
13. Power ignition off and wait 130 Seconds.
14. Check / clear any stored fault codes, disconnect Digital Wrench and test ride the motorcycle.
15. File a SA claim for Indian Motorcycle® ISA-20-03.