

LEVELING

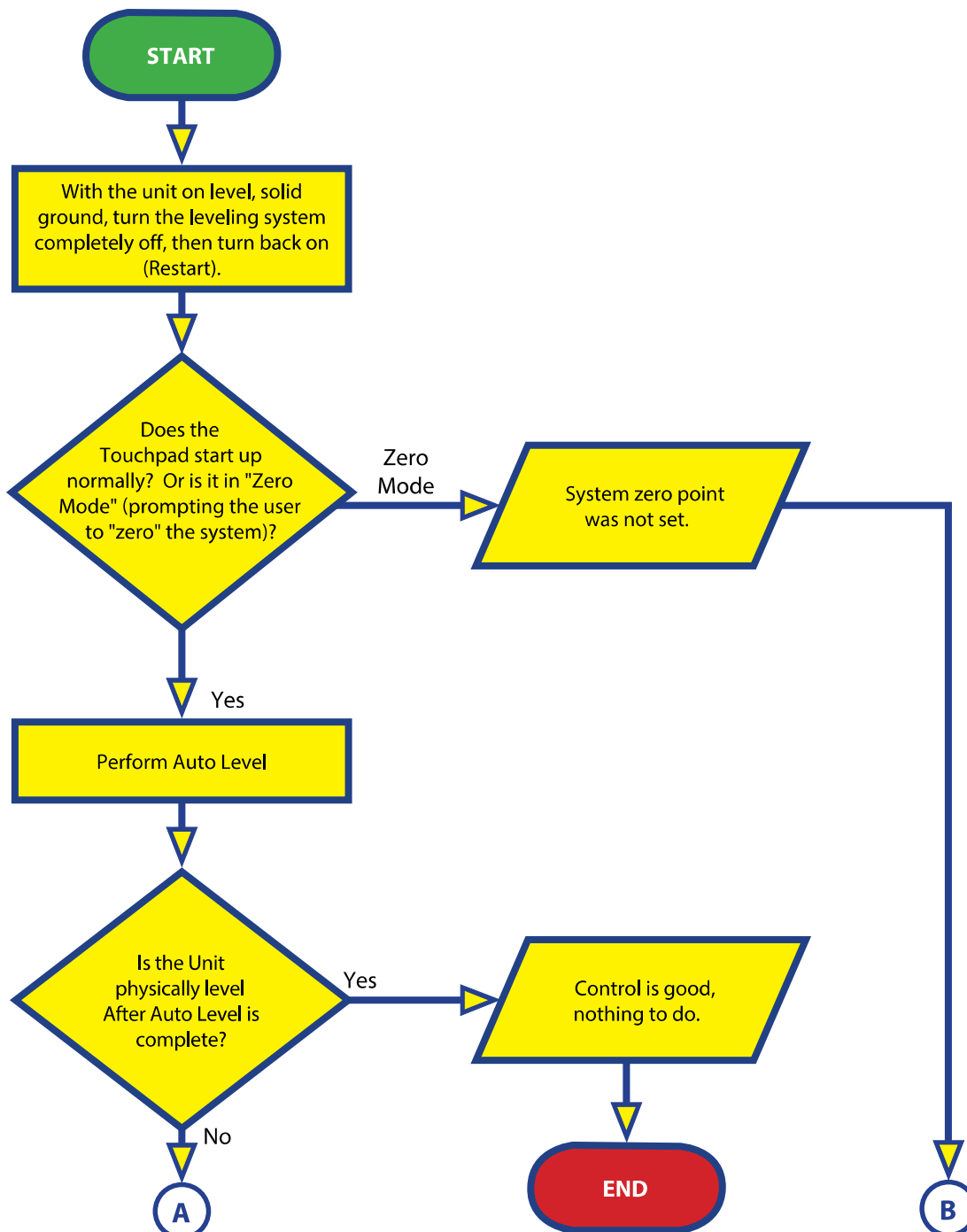
Purpose

This document outlines the flow of the Recalibration Process steps used within the hydraulic leveling application. This process flow chart can be used to establish training for personnel.

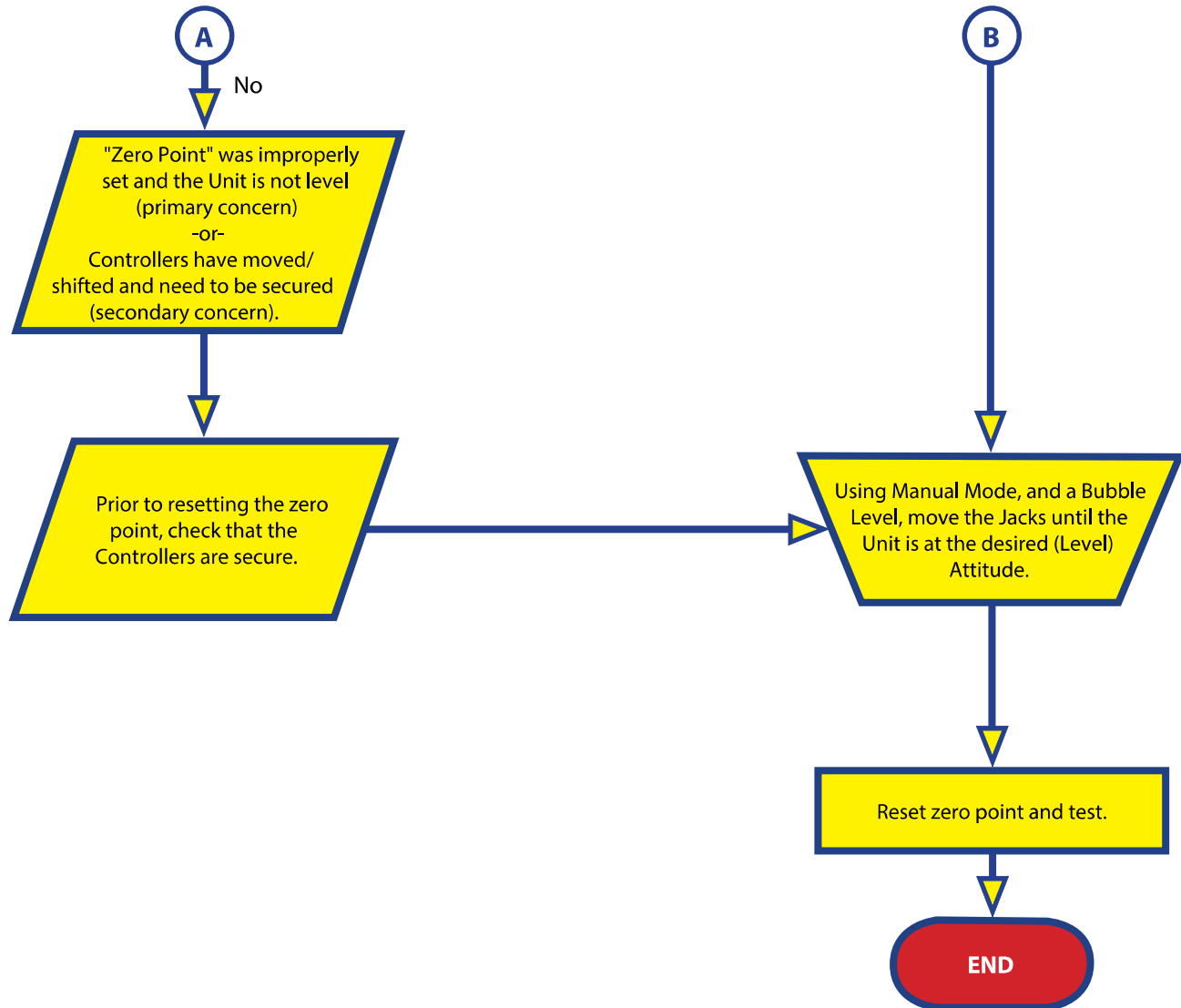
Procedure

If system is showing any error codes prior to performing the recalibration process, please refer to the LCI troubleshooting guide:

https://lci-support-doc.s3.amazonaws.com/manuals/leveling-and-stabilization/ccd_0001749.pdf



LEVELING



As a supplier of components to the RV industry, safety, education and customer satisfaction are our primary concerns. Should you have any questions, please do not hesitate to contact us at (574) 537-8900 or by email at customerservice@lci1.com. Self-help tips, technical documents, product videos and a training class schedule are available at lci1.com or by downloading the MyLCI app.