

2021 ES 250, ES 300h, ES 350 Pre-Delivery Service (PDS)

Service Category General

Section Pre-Delivery Service

Market USA

Toyota Supports
ASE Certification 

Applicability

YEAR(S)	MODEL(S)	ADDITIONAL INFORMATION
2021	ES250, ES300H, ES350	

Introduction

This bulletin contains the vehicle specific pre-delivery services for 2021 model year ES 250, ES 300h, and ES 350 vehicles. Additionally, refer to the applicable Pre-Delivery Service (PDS) Check Sheet for services to be performed.

Warranty Information

OP CODE	DESCRIPTION	TIME	OFF	T1	T2
N/A	Not Applicable to Warranty	–	–	–	–

Procedures

- [D/C Cut Fuse Installation*](#) 2
- [Deletion of Vehicle Alert History](#) 3
- [Seat Position Control ECU Initialization*](#) 3
- [Tire Pressure Warning System \(TPWS\) Initialization](#) 4
- [Memorize Steering Angle Neutral Point*](#) 4
- [Parking Support Brake System Calibration*](#) 4
- [Front Emergency Towing Eyelet Removal and Hole Cover Installation*](#) 5
- [Front Wheel Opening Extension Pad Installation](#) 7
- [Front License Plate and Mounting Bracket Installation*](#) 8
- [Installation of Rubber Body Plugs*](#) 10

*If Applicable

2021 ES 250, ES 300h, ES 350 Pre-Delivery Service (PDS)

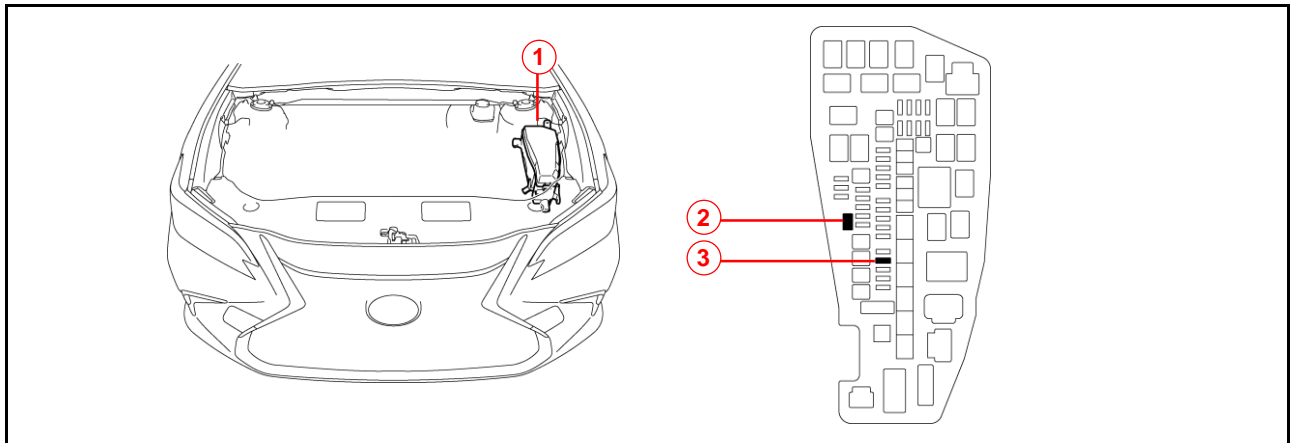
D/C Cut Fuse Installation

To minimize battery discharge during transportation and storage, the D/C cut fuse (25A) has been removed at the assembly plant and temporarily stored in the blank space of the relay block in the engine compartment. During PDS, reinstall the D/C cut fuse (25A) into its original location and clear ALL related Diagnostic Trouble Codes (DTCs).

NOTE

This step is **ONLY** necessary on Japan produced vehicles (VINs starting with “J”) marketed in the continental United States, and on ALL vehicles in Hawaii, Puerto Rico, Saipan, Guam, and American Samoa.

Figure 1.



1	Relay Block
2	Remove D/C Cut Fuse (25A)

3	Install D/C Cut Fuse (25A) (Original Location)
----------	---

NOTE

While the vehicle is stored at the dealership, disconnect the negative (-) battery terminal to prevent battery discharge. Refer to Service Bulletin No. [L-SB-0017-20](#), *Battery Maintenance During PDS*, for battery maintenance information.

2021 ES 250, ES 300h, ES 350 Pre-Delivery Service (PDS)

Deletion of Vehicle Alert History

As the D/C cut fuse is removed, the communication between the various ECUs is interrupted. When the D/C fuse is reinstalled, the communication status is restored, but Lexus Enform Service Connect may store malfunction history in the form of vehicle alert history. Therefore, it is necessary to operate the multi-display and delete the vehicle alert history AFTER installing the D/C cut fuse during PDS at the dealership.

Deletion Procedure

1. Turn the engine switch (power switch) to the ON position (ON mode).
2. Push the Menu switch on the remote touch device.
3. On the multi-display, enter the following menus: *Info – Vehicle Alert History*.
4. If there is vehicle alert history stored, perform the Delete History operation.

HINT

If there is no vehicle alert history stored, the system will display a message stating "There is no vehicle alert history."

5. When the vehicle alert history deletion confirmation screen is displayed, select Yes.

HINT

If there is no vehicle alert history stored, the system will display a message stating "There is no vehicle alert history."

6. Turn the engine switch (power switch) to the OFF position (OFF mode).

Seating Position Control ECU Initialization

Refer to the applicable Repair Manual for the seating position control ECU initialization procedure ([ES 250](#) / [ES 350](#) / [ES 300h](#)) (procedure 2).

2021 ES 250, ES 300h, ES 350 Pre-Delivery Service (PDS)

Tire Pressure Warning System (TPWS) Initialization

Refer to the applicable Repair Manual for the TPWS initialization procedure ([ES 250](#) / [ES 350](#) / [ES 300h](#)). Note the spare tire does NOT have a TPWS sensor.

NOTE

To adjust the tire pressure correctly when the outside temperature is significantly colder than shop temperature, perform a Health Check using Techstream and select the compensation tire pressure checkbox. Compensation pressures will display on the Health Check results screen. Adjust the tire pressure when the tires are cold.

Memorize Steering Angle Neutral Point

As a result of the removal of the D/C cut fuse, the power source to the steering angle sensor is cut off. When the D/C cut fuse is reinstalled, the parking assist monitor system/panoramic view monitor will be operative, but it cannot display guidelines to assist parking operation because the center position recognized by the steering angle sensor may not be in an initial position. Therefore, perform steering angle neutral point initialization AFTER installing the D/C cut fuse during PDS.

Refer to the applicable Repair Manual for the steering angle neutral point initialization procedure ([ES 250](#) / [ES 350](#) / [ES 300h](#)).

Parking Support Brake System Calibration

As a result of the removal of the D/C cut fuse, the steering angle sensor power source is cut off. When the D/C cut fuse is reinstalled, the center position recognized by the steering angle sensor may not be the appropriate position. Therefore, it is necessary to perform parking support brake system calibration AFTER installing the D/C cut fuse during PDS.

Refer to the applicable Repair Manual for the intelligent clearance sonar system calibration procedure:

- Driving Method ([ES 250](#) / [ES 350](#) / [ES 300h](#)).
- Techstream Method ([ES 250](#) / [ES 350](#) / [ES 300h](#)) (procedure 4).

2021 ES 250, ES 300h, ES 350 Pre-Delivery Service (PDS)

Front Emergency Towing Eyelet Removal and Hole Cover Installation

NOTE

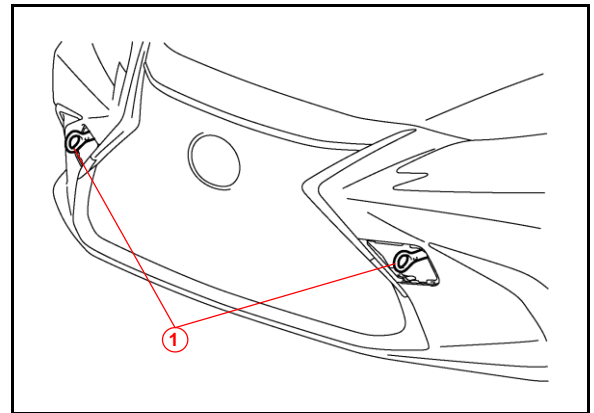
This step is ONLY necessary on Japan produced vehicles (VINs starting with "J").

1. Remove the two front emergency towing eyelets from the front bumper by turning them counterclockwise.

NOTE

- If it is difficult to loosen the front emergency towing eyelets, use a steel bar.
- Dispose of one of the removed two front emergency towing eyelets.

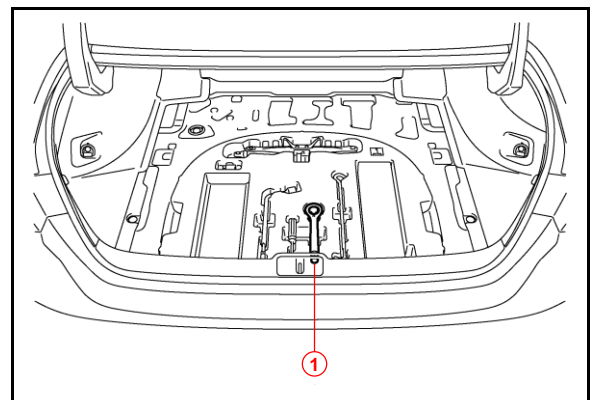
Figure 2.



1 Front Emergency Towing Eyelets

2. Place one of the removed emergency towing eyelets into the luggage tray in the luggage compartment.

Figure 3.



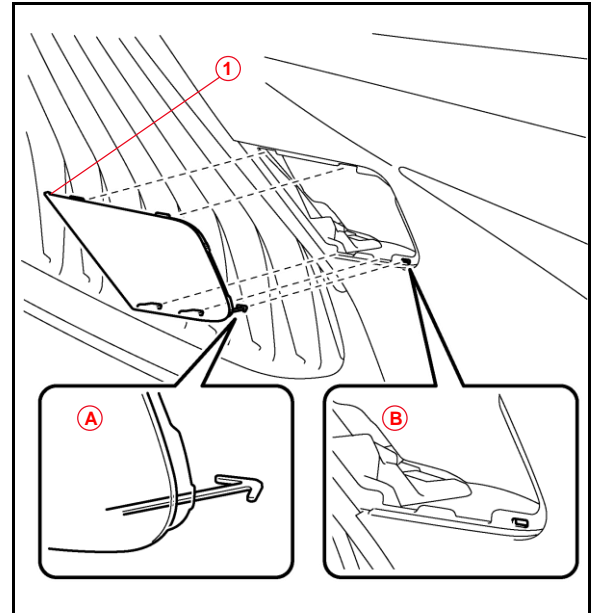
1 Front Emergency Towing Eyelet

2021 ES 250, ES 300h, ES 350 Pre-Delivery Service (PDS)

Front Emergency Towing Eyelet Removal and Hole Cover Installation (continued)

3. Install the two, front emergency towing eyelet hole covers, which are stored in the glove compartment, onto the front bumper.
 - A. Insert the arrow-shaped tab of the front emergency towing eyelet hole cover "A" into the eyelet hole tab "B" as shown.
 - B. Install the front emergency towing eyelet hole cover to the hole in the front bumper.

Figure 4.



A	Arrow-shaped Tab
B	Eyelet Hole Tab
1	Front Emergency Towing Eyelet Hole Cover

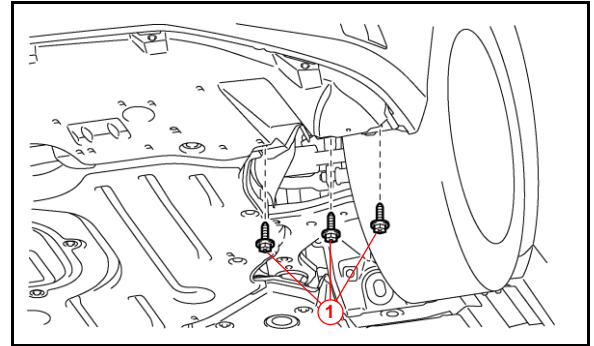
2021 ES 250, ES 300h, ES 350 Pre-Delivery Service (PDS)

Front Wheel Opening Extension Pad Installation

The front wheel opening extension pad set (right and left front wheel opening extension pads) are located in the luggage compartment at the assembly plant to avoid damage in transit.

1. Remove the three self-tapping screws from the engine under cover on the left side (the self-tapping screws will be reused for the installation).

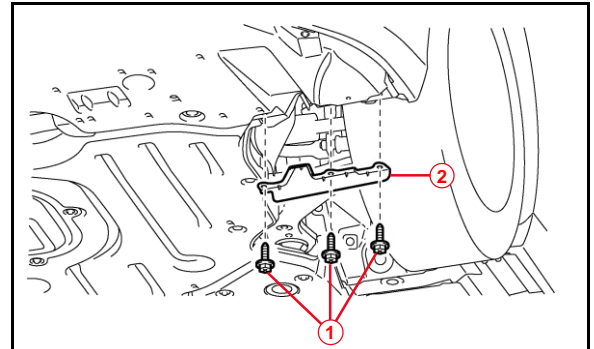
Figure 5.



1	Remove Self-tapping Screws
----------	-----------------------------------

2. Place the left front wheel opening extension pad on the installation position as shown and tighten the three self-tapping screws.

Figure 6.



1	Install Self-tapping Screws
2	Left Front Wheel Opening Extension Pad

3. Repeat steps 1 and 2 for the right-hand side.

2021 ES 250, ES 300h, ES 350 Pre-Delivery Service (PDS)

Front License Plate and Mounting Bracket Installation

The front license plate mounting bracket and two self-tapping screws are loaded in the vehicle at the assembly plant. Follow this procedure to install the front license plate bracket and front license plate in states where it is required by law.

1. Align holes "A" of the mounting bracket with the dimples on the front bumper cover. Mark the location of holes "B" on the radiator lower grille.

NOTE

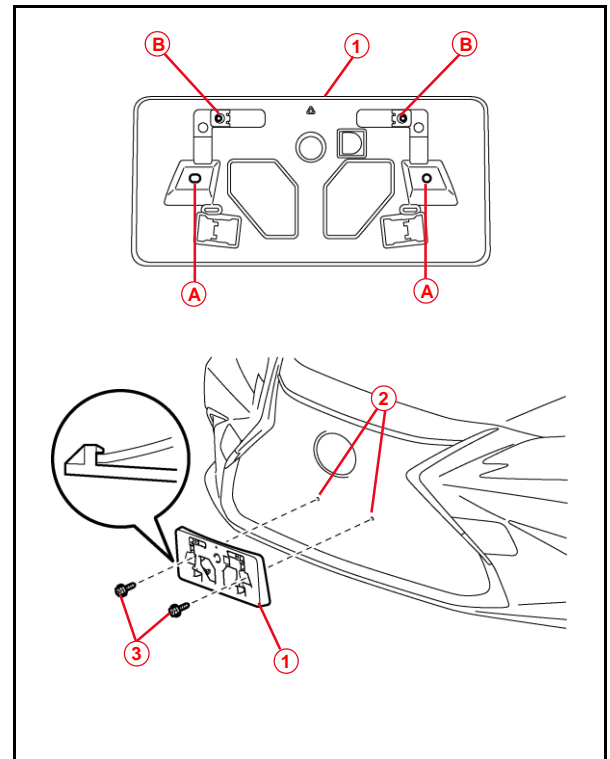
- Holes "A" are used to install the mounting bracket onto the bumper cover.
- Holes "B" are used to install the front license plate onto the mounting bracket.

2. Install the mounting bracket to the front bumper cover (holes "A") using the two supplied self-tapping screws.

NOTICE

- Do NOT pre-drill holes into the dimples on the front bumper cover.
- Do NOT overtighten the self-tapping screws.

Figure 7.



1	Mounting Bracket
2	Dimples
3	Self-tapping Screws

2021 ES 250, ES 300h, ES 350 Pre-Delivery Service (PDS)

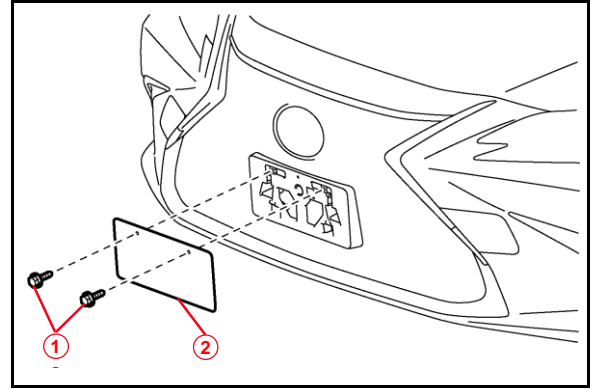
Front License Plate and Mounting Bracket Installation (continued)

3. Install the front license plate onto the mounting bracket using two noncorroding bolts with the following dimensions:

Nominal Length: 15.0 mm (0.59 in.)

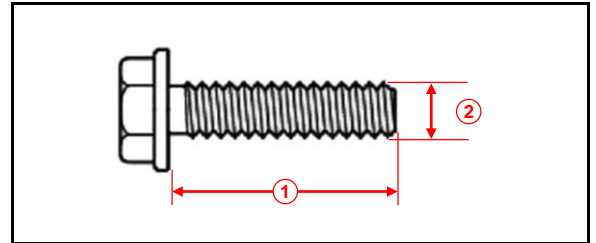
Diameter: 6.0 mm (0.24 in.)

Figure 8.



1	Bolts
2	Front License Plate

Figure 9.



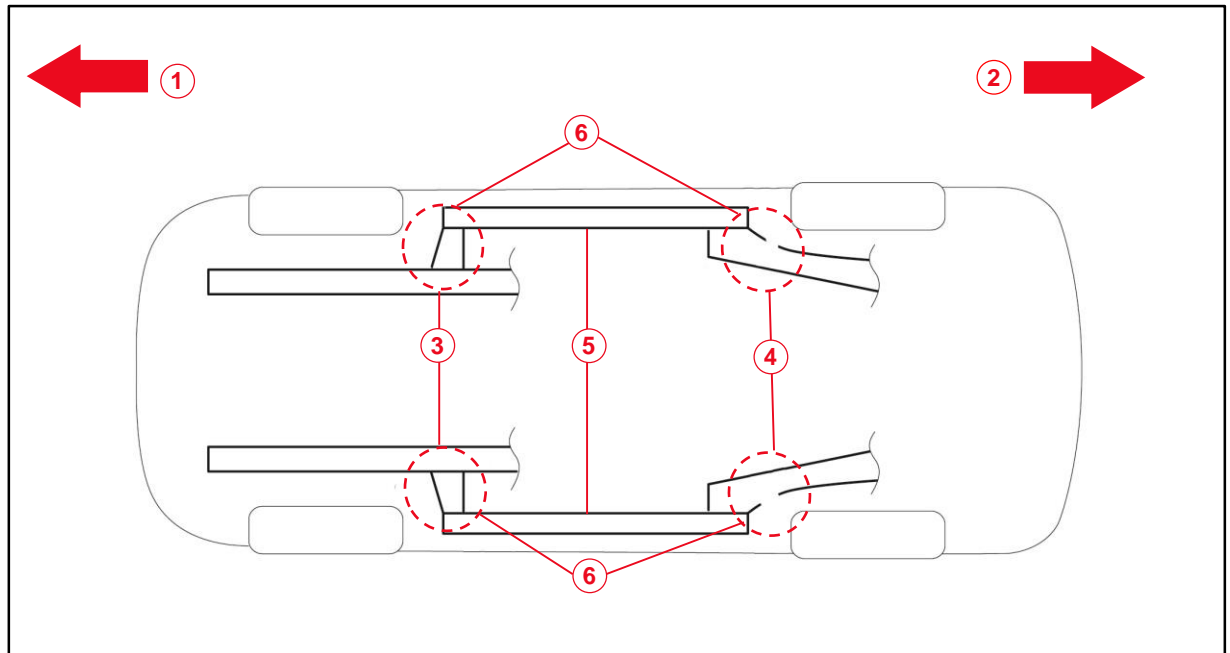
1	Nominal Length
2	Diameter

2021 ES 250, ES 300h, ES 350 Pre-Delivery Service (PDS)

Installation of Rubber Body Plugs

1. Confirm the number of plugs in the glove box. If two plugs are present, perform substep 2A ONLY. If four plugs are present, perform substep 2A AND substep 2B.
2. Install plugs according the instructions below by confirming the number of plugs in the glove box.
 - A. Install two plugs in the rear side member hole or rocker inner hole (see Figure 10).
 - B. Install two plugs in the torque box hole or rocker inner hole (see Figure 10).

Figure 10.



1	Front Side
2	Rear Side
3	Torque Box Hole or Rocker Inner Hole
4	Rear Side Member Hole or Rocker Inner Hole
5	Rocker Inner
6	Install Plug Here (if Applicable)

NOTICE

- The installation of these plugs is required to prevent rust.
- These plugs are stored in the glove box.
- The number of plugs may vary according to production locations in the same vehicle model.