

PREVOST

Instruction Sheet

IS-20923

H3 DRIVER'S PARTITION LITE INSTALLATION

First Release

09-30-2020

MATERIAL

Kit #IS20923 includes the following parts:

Part No.	Description	Qty
7771145	KIT DRIVER'S BARRIER "H"	1
7771146	DRIVER'S PARTITION REAR	1
7771118	DECAL DRIVER'S PARTITION, EN/FR/SP	2
320914	SUPPORT	1
901459	HANDLE	1
N8911754	ENCASED NEODYMIUM MAGNET	4
N8911874	BLIND NUT #8-32 UNC	4
509558	MOLDING, PLASTIC BLACK	1ft
506003	FOAM TAPE AD1 PE CC BK 3/16"X3/4"X40'	1ft
502626	SCREW MA PAN PH N500 M6-1x20	8
5001182	NUT HEX NYRT SS M6-1	8
502571	WSHER FL WITH SEAL SS .281X.625X20GA (M6, #14)	16
500879	SCR TP PAN PH Z050 10X1	11
504399	CAP TRIM WASHER, # 10 SCREW	11
502746	SCR MA PAN PH SS NSS M5-0.8X20	3
502841	NUT HEX NYRT NX500 M5-0.8	3
500464	WSHER FN CKF .220X.615	2
IS-20923	INSTRUCTION SHEET (EN)	1
FI-20923	INSTRUCTION SHEET (FR)	1

NOTE

Material can be obtained through regular channels.

PROCEDURE



DANGER

Park vehicle safely, apply parking brake, stop engine. Prior to working on the vehicle, set the ignition switch to the OFF position and trip the main circuit breakers equipped with a trip button. On Commuter type vehicles, set the battery master switch (master cut-out) to the OFF position.

Lock out & Tag out (LOTO) must be performed during set-up, maintenance or repair activities. Refer to your local procedure for detailed information regarding the control of hazardous energy.

1. Installation of the entrance modesty magnet flat bar.

- Remove the two entrance modesty screws located at the farthest right of the panel (keep black plastic caps but discard screws and plastic washers).

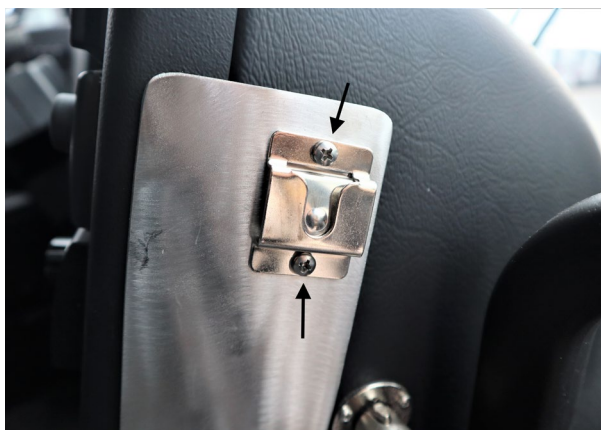
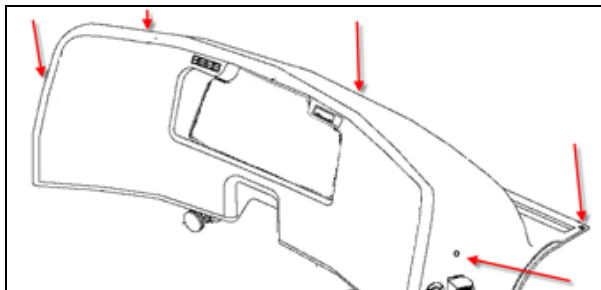


- Using new supplied **500879** screws & **504399** plastic washers, install the flat bar with the angled side at the top.
- Reinstall the black plastic caps over the screw heads.



2. Installation of the microphone support magnet plate.

- Remove the five Phillips head screws holding the dash cover.
- Remove the microphone support from the dash cover (do not lose the 2 small nuts inside the cover).
- Insert the magnet plate behind the support and reinstall the support/plate assembly to the dash cover.
- Reinstall the dash cover.



3. Rear partition installation (45deg. support).

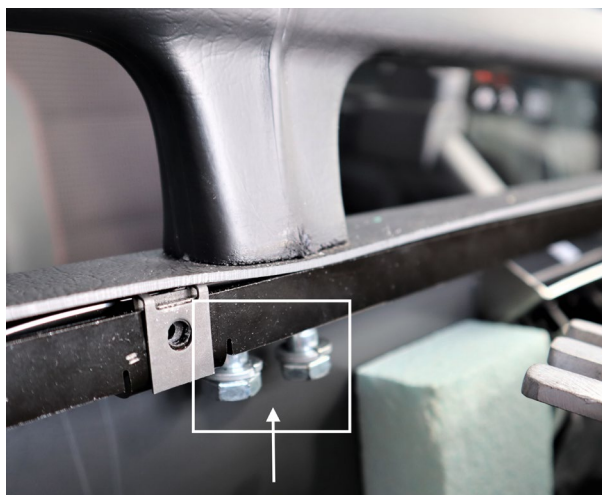
- Remove the driver's back panel top five screws (keep black plastic caps but discard screws and plastic washers).



- Also remove the two screws holding the panel on the aisle side (also keep black plastic caps but discard screws and plastic washers).

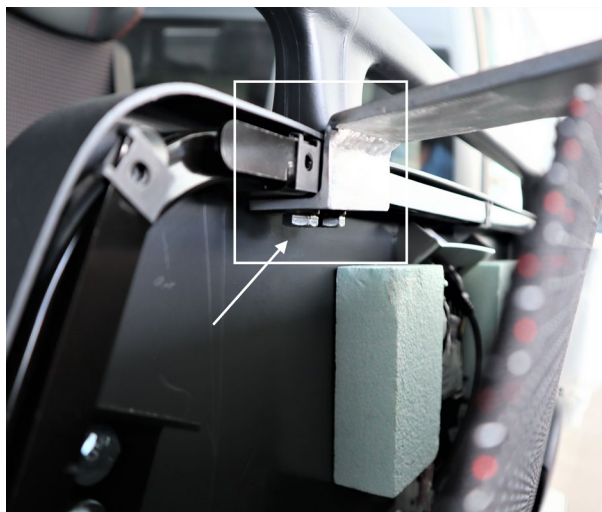
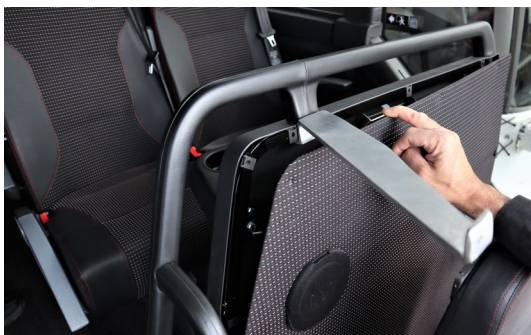


- Behind the panel, unscrew halfway the two hex bolts holding the top of the handrail.



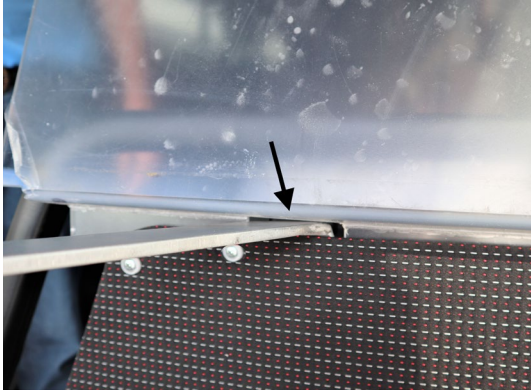
- Insert the fork part of the 45deg. support between the hex bolts and the frame.

- Tighten the bolts to secure the support to the panel frame.



4. Rear partition installation (securing the partition).

- Insert the partition between the frame and the panel. Position the partition notched part over the previously installed 45deg support.



- Match the partition holes with the original panel holes and secure to the frame using supplied **500879** screws & **504399** plastic washers (do not reinstall the two lateral screws yet, only the five top screws).
- Put back the black plastic caps over the screw heads.



5. Rear partition installation (top support).

NOTE

- *If an overhead screen has been removed, the carpeted panel under the parcel rack must be rotated 180deg so the partition top support will cover the oblong opening in the panel.*



- Position the top support under the parcel rack.
- Make the top of the partition contact the support (flat as possible) and mark the two screw position *under the parcel rack*.



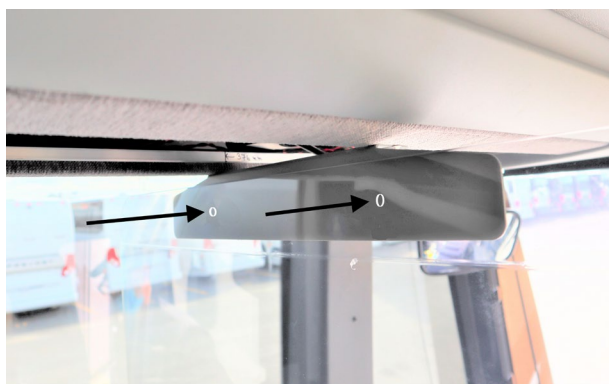
- Drill two small pilot holes in the parcel rack.



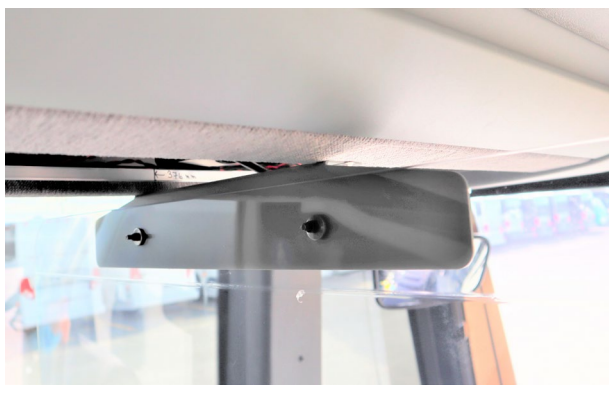
- Secure the top support to the parcel rack using the supplied **500879** screws & **500464** washers.



- Using the partition top holes as a template, carefully drill corresponding holes in the top support (do not enlarge the partition holes with the drill).



- Using two supplied **502746** screws, two **502841** nuts & four **500464** rubberized washers, secure the partition to the top support (do not over torque).



6. Door panel installation.

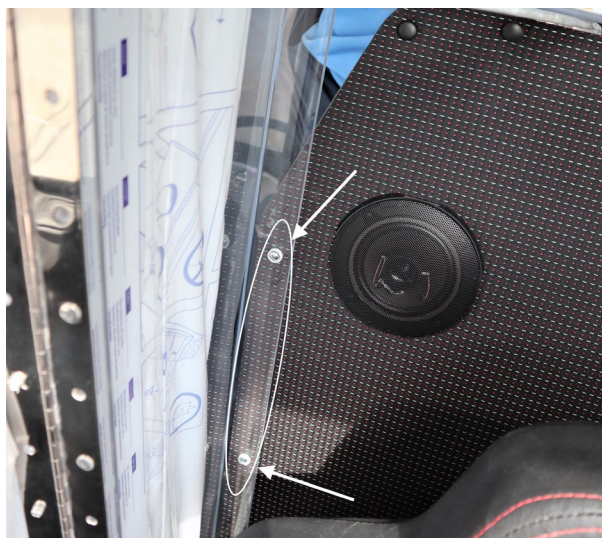
- Remove the Allen head screw holding the handrail “foot shaped” lower support next to the driver’s armrest.



- Slide the triangular “L” bracket under the handrail foot.
- Hand tight the Allen bolt so that the installed bracket can move & rotate slightly.



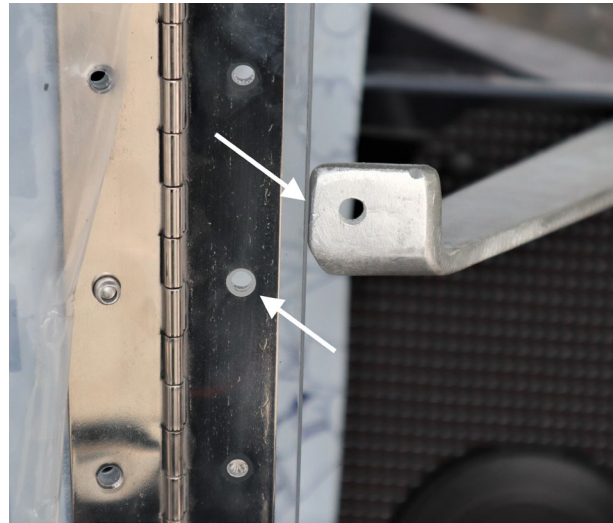
- Position the door panel and hand tight the two **500879** screws & **504399** plastic washers that will secure the door panel to the driver panel (door panel must fit behind the “L” bracket at the bottom of the installation).



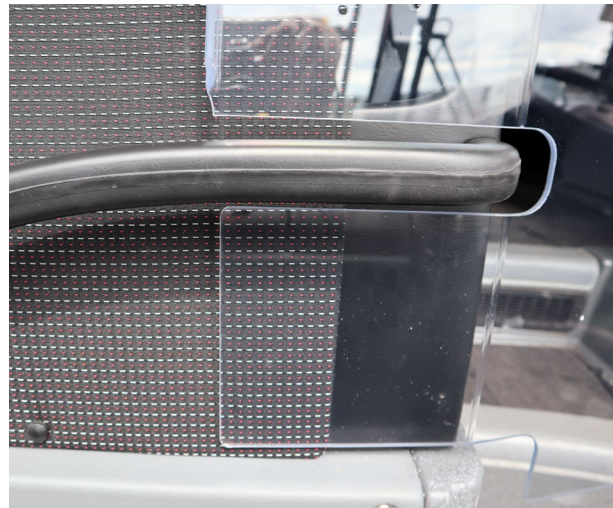
- Connect the door panel to the “L” bracket using three **502626** screws, three **5001182** nuts & six **502571** rubberized washers (hand tight only to allow adjustment).



- Secure (hand tight) the 45deg. support to the door hinge using a **502626** screw, one **5001182** nut & one **502571** rubberized washer (one of the upper hinge hole is drilled larger for this purpose).

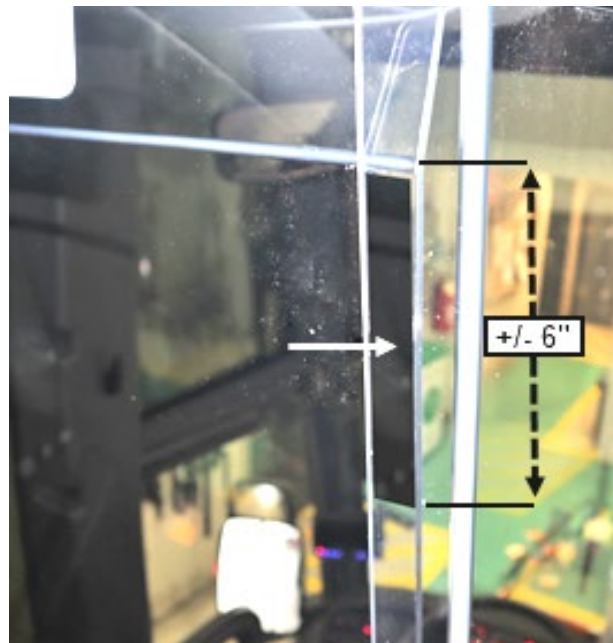


- Using the available play between parts given by the hand tightened screws, adjust the door opening at the entrance handrail. Opening should be straight with equal gaps.



- Once correct adjustment is achieved, apply final torque to all hand tighten screws (at lower bracket, panel & 45deg support).

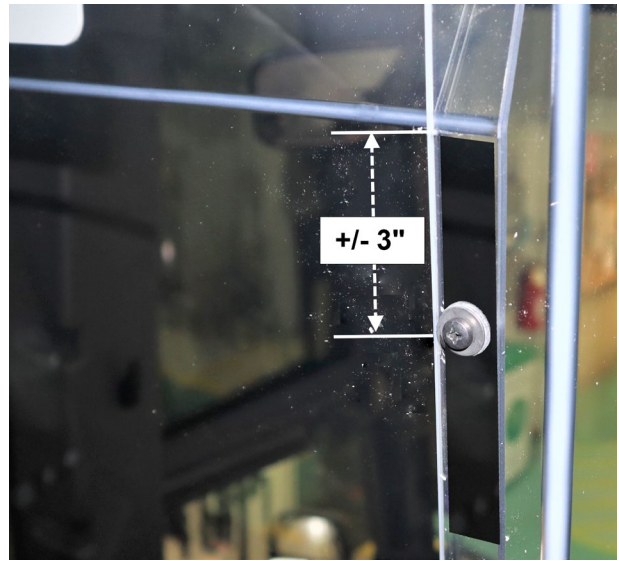
- On the partition back panel inside, stick a 6in piece of supplied **506003** foam tape at the *top corner of the aisle side* (just below the angled top part).



- Drill a 6mm hole through both panels (and the foam tape) at the top corner where the two panels are making contact (+/- 3in from the top of the foam tape strip).



- Secure the panels together using one of the supplied **502746** screw, one **502841** nut & two **500464** rubberized washers.

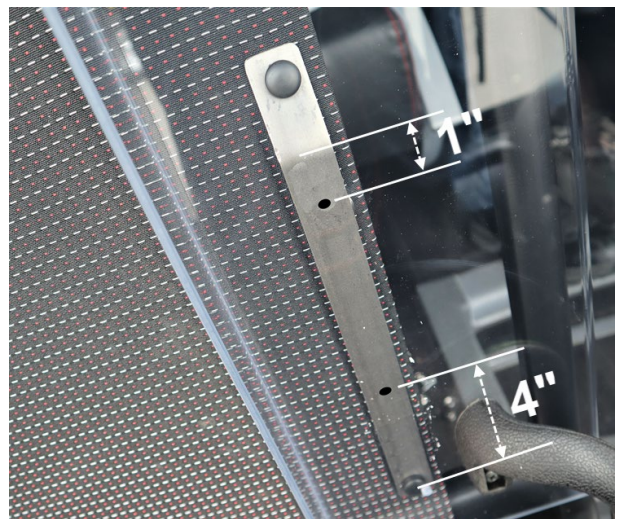


7. Accessories installation.

- Install the door handle using the last supplied **502746** screws, **502841** nuts & **500464** rubberized washers.
- Clip in place the two screw caps over the handle screws.



- Position the door over the magnet support.
- Using a sharpie, mark the vertical magnets location on the door. The top magnet should be about one inch below the support bent edge and the lower magnet about four inches higher than the lower screw cap.



- Using a 7/32in (6mm) drill bit, drill through the door at the two marked positions.

- Install two **N8911754** magnets secured with **N8911874** nuts in the drilled holes.



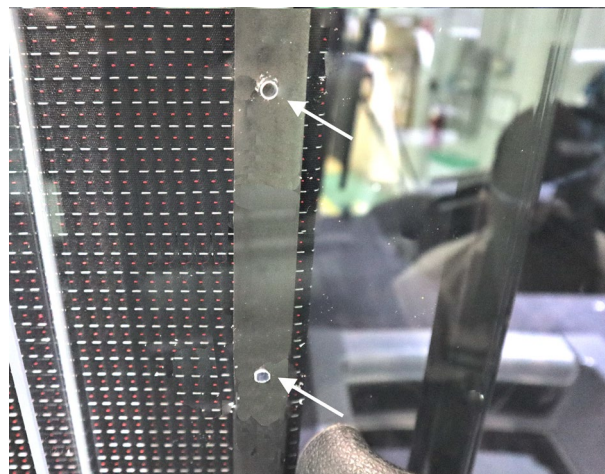
- Position the door over the magnet plate (dashboard).

- Using a sharpie, mark the magnets location on the door edge. Magnet holes should be located at 1/2in minimum from the door edge and spread apart around 4 inches.

- Drill the magnet holes using a 7/32in (6mm) drill bit.

- Install two **N8911754** magnets secured with **N8911874** nuts in the drilled holes.

- To protect the driver's hand, install the **509558** rubber molding strip on the lower edge of the door hinge (driver's armrest area).



- Stick one of the supplied **7771118** decals on the upper part of the door (passenger aisle side).



- On the other side of the door, install the other **7771118** decal. With the door closed, this decal should obstruct the driver's right mirror view, prompting him to open the door while driving.



NOTE

*As written on the decals:
During driving operations, the door shall be locked to the modesty panel to avoid interference with driver's visibility.*

PARTS / WASTE DISPOSAL

Discard waste according to applicable environmental regulations (Municipal/State[Prov.]/ Federal)