



EMISSIONS RECALL

CONVENTIONAL DEF INJECTOR REPLACEMENT

CAMPAIGN NO: AAH30

DATE: 9-8-2020

REFERENCE: QA-200831-N1

SUBJECT VEHICLES: Certain 11MY-16MY Conventional trucks equipped with a J08 engine

Note: *Refer to the appropriate Vehicle Identification Number in the warranty system to determine vehicle eligibility.*

OVERVIEW:

The seal structure of the dosing valve of the DEF Injector may be inadequate. With an inadequate seal, water or DEF may enter inside the coil of the dosing valve from the seal, causing the DEF Injector to be inoperative.



BEFORE YOU BEGIN:

- Read and understand all instructions and procedures before you begin the work.
- Read and follow all **NOTICES** and **WARNINGS** set forth in this publication. These alerts help to avoid damage to components, serious personal injury, or both.
- Apply the parking brake firmly and confirm parking brake activation.
- Turn off the engine and remove the key from the ignition switch.
- Always wear safety glasses to protect your eyes.
- Place wheel chocks in front of and behind all the wheels to prevent the vehicle from moving.

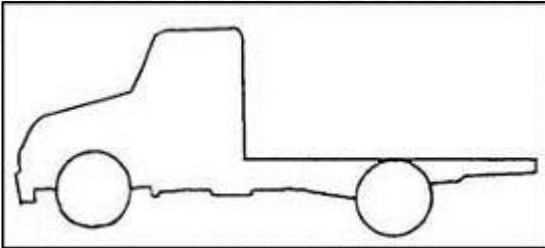
PARTS:

Part Number	Part Description	Quantity
S17J0E0020	DEF Injector	1



VEHICLE PREPARATION:

1. Park the vehicle on a flat, level and solid surface. Confirm the engine is stopped, the ignition switch is in the off (LOCK) position, and the key is removed.



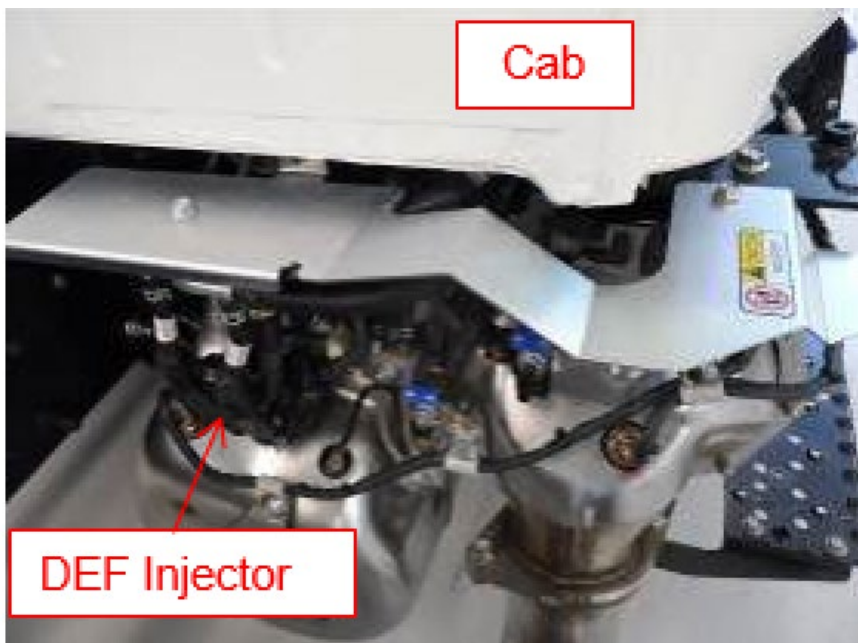
2. Apply the parking brake. Chock all of the wheels.



Repair Procedure:

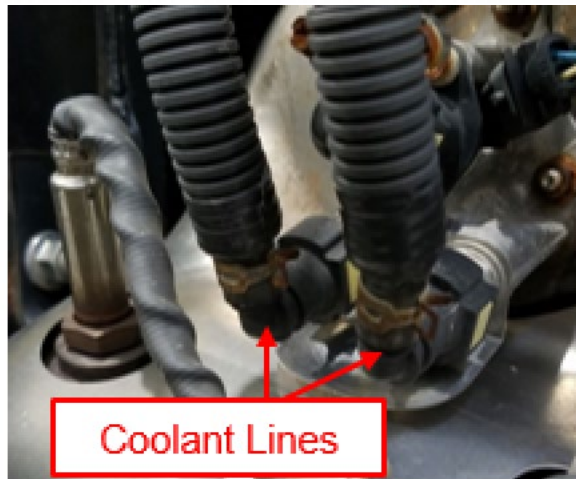
WARNING: Hot engine coolant and a hot exhaust system can cause serious burns and other injuries. To avoid serious burn injuries, make certain that both the engine and the exhaust system are cool and at ambient air temperature before beginning this repair procedure.

1. When the engine and exhaust system are cool, locate the DEF injector on the rear of the exhaust system below the passenger side of the cab.



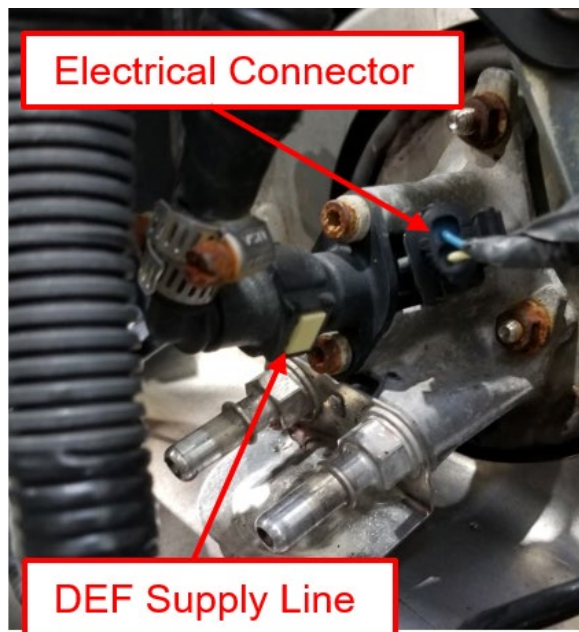
NOTICE: The vehicle shown below and throughout this procedure is not equipped with a heated DEF line (except step 3b). If equipped with a heated DEF line, the pictures in this procedure will vary slightly, but the removal and installation procedure is the same.

2. Place a bucket under the DEF injector to capture any loss of coolant. Remove the 2 coolant lines connected to the DEF injector.



3a. Remove the DEF supply line to the DEF injector and disconnect the electrical connector.

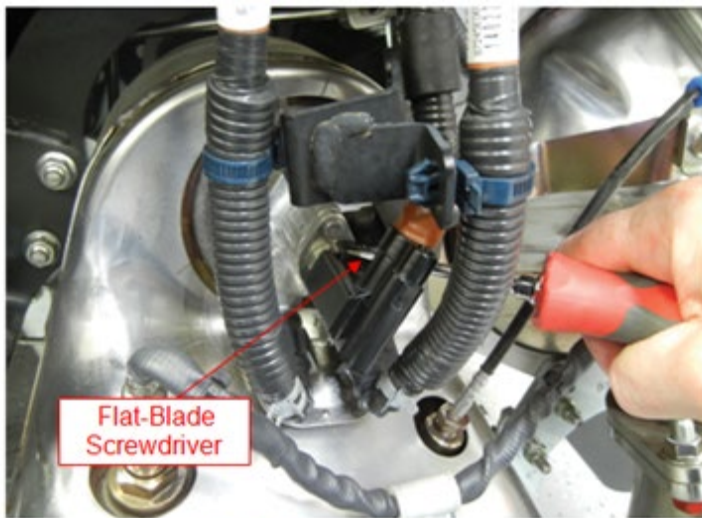
Non-Heated DEF Electrical Connector



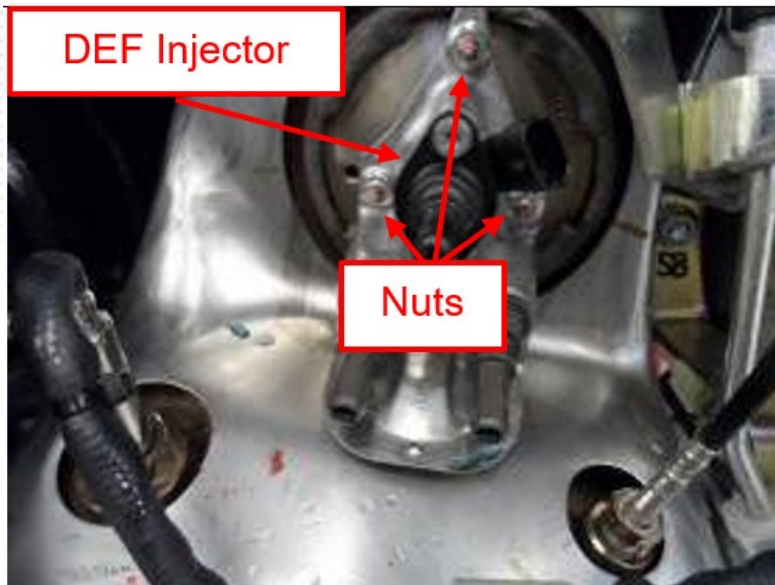
Note: When disconnecting the heated DEF injector connector on the vehicle, there is potential that the connector may break due to improperly removing the new style connector.

3b. A flat-blade screwdriver will be inserted through an entry canal on the mating face of the connector, which is used to lift and release the lock tang. Once the lock tang is released, the connector can be removed from the DEF injector using a pulling motion.

Heated DEF Electrical Connector

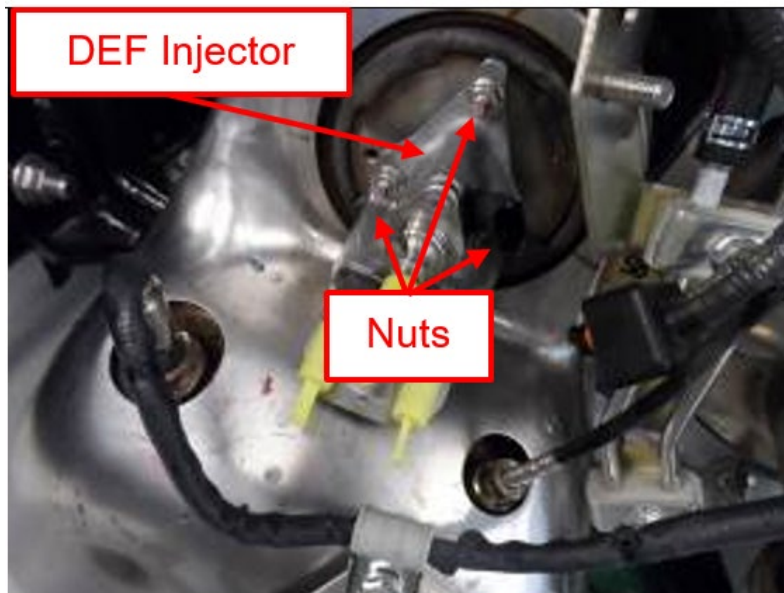


4. Remove the 3 nuts securing the DEF injector to the exhaust and retain for reinstallation. Remove and discard the DEF injector.

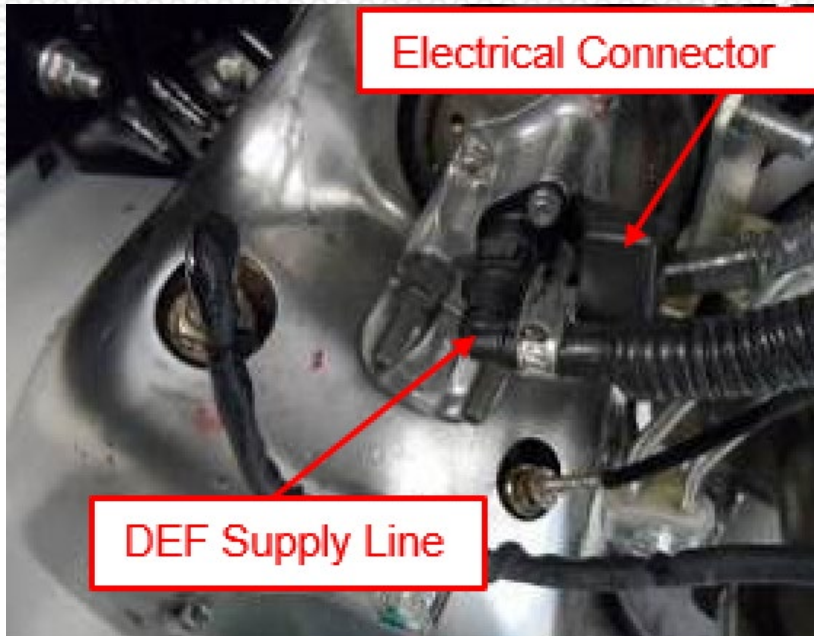


5. Install the new DEF injector using the 3 nuts removed in the previous step. Tighten the nuts to the specified torque.

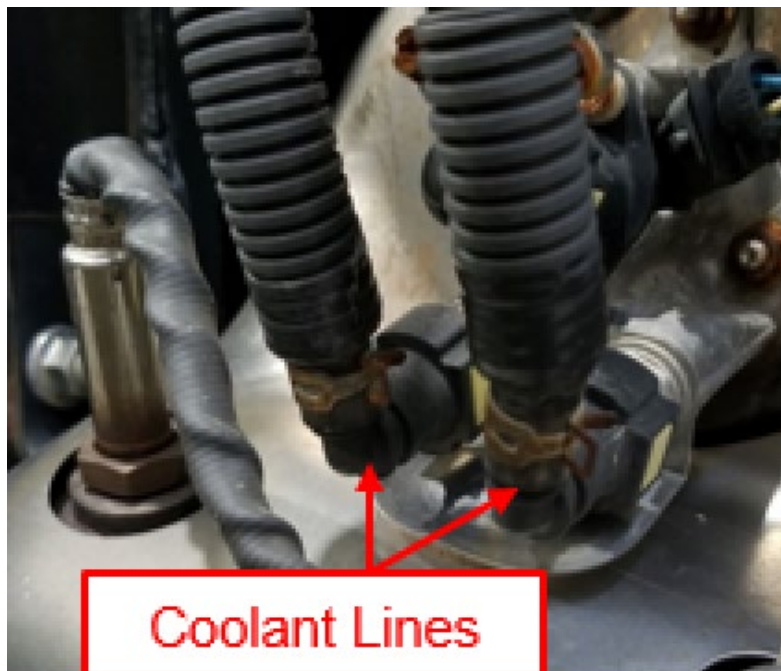
Specified Torque: 6 lb-ft (8 Nm)



6. Connect the DEF supply line to the DEF injector and connect the electrical connector.



7. Connect the 2 coolant lines to the DEF injector.



8. Release the 2 hood latches and open the hood. Remove the radiator cap. Fill the vehicle's cooling system with approved Hino Genuine Coolant. Reinstall the radiator cap. Close the hood and secure the 2 hood latches.

FINAL INSPECTION:

To complete this emissions recall, review and confirm the following:

- The engine coolant level is full in the radiator and coolant reservoir
- DEF injector fasteners have been tightened to their specified torque
- With the engine running, no coolant, DEF, or exhaust leaks are present
- No warning lamps are illuminated with the engine running

CLAIM APPLICATION

Reimbursable in accordance within the terms and policies of the Hino limited warranties.

DEF Injector Replacement:

- a) Campaign No: AAH30
- b) Labor charge: 0.3 hr.
- c) Warranty code: 11528
- d) Trouble code: 98
- e) Operation code: 11507ARE
- f) Original failed part: 9999999999

