

Mack Chassis - Rear Drive, Transverse Torque Rod Bracket Failure



> Internal Content

Related | attachm

No links available

Mack Trucks has seen an increase in Mack rear drive, transverse torque rod bracket failures.

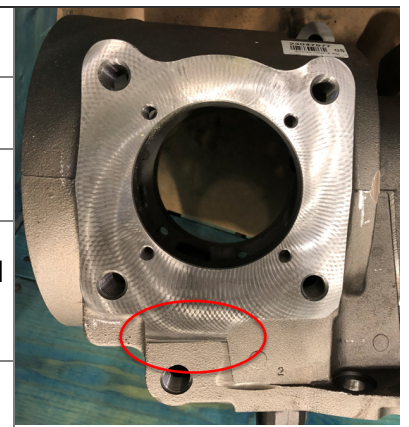
Failures happen after the studs loosen on the rear of the carrier or when the bracket does not sit flat on the carrier housing to the torque rod bracket.

NOTE: Testing is ongoing.

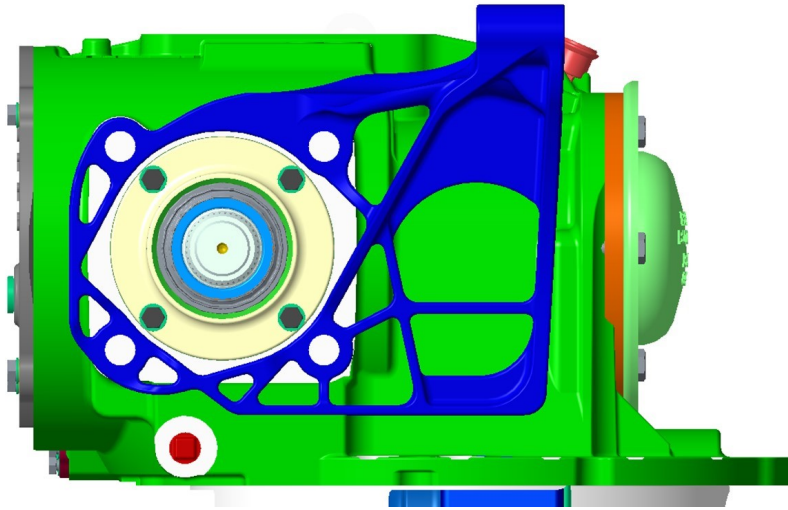


If you have suffered a rear drive, transverse torque rod bracket failure, refer to the steps below:

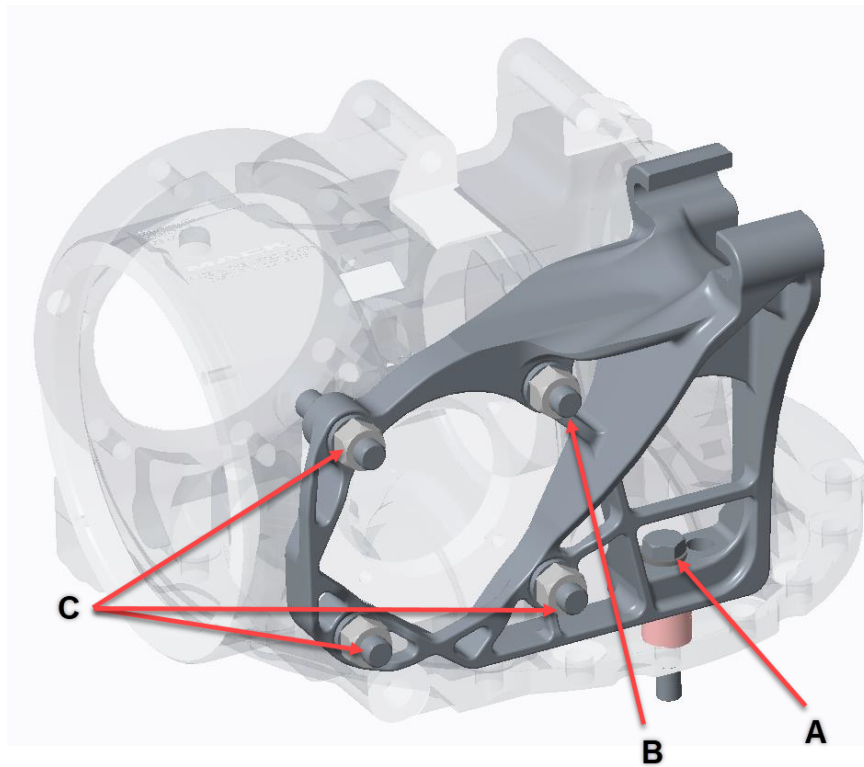
Inspect for a raised boss area on the carrier
Inspect for bracket not being seated flush with the carrier housing
Remove studs
If applicable grind smooth to match the flat surface for the bracket (be careful to grind smooth so no cracks form)
Clean and install the studs with Loctite 263. Torque to 225-275 lb-ft.



Bracket 22539545



See the bracket torque specs below:



A Torque to 153 ft-lbs

	(207 N-m) [SC]
B	Torque to 250 ft-lbs (339 N-m) [SC]
C	Torque to 250 ft-lbs (339 N-m) [SC]

NOTE: Tighten fasteners in the order noted above, A first, then B, then C. First torque the bolts to initial value of 100 ft-lbs (203 N-m) to insure the part is well seated on all faces. Then apply final torque to fasteners in the order A, B, C.



Tags [K12193443](#)



Feedback

[Give feedback](#) to help improve the content of this article

