

## STAR ONLINE PUBLICATION

---

**Case Number:** S2008000133

**Release Date:** 8/29/2020

**Symptom/Vehicle Issue:** ABS And Cluster Warning Lights Intermittently Illuminate. Multiple CAN B Faults

**Discussion:** The CAN B circuits may become pinched and damaged from the locking tab on the small access panel between the driver and passenger front seat. This concern can be caused by a person repeatedly walking on the access panel.

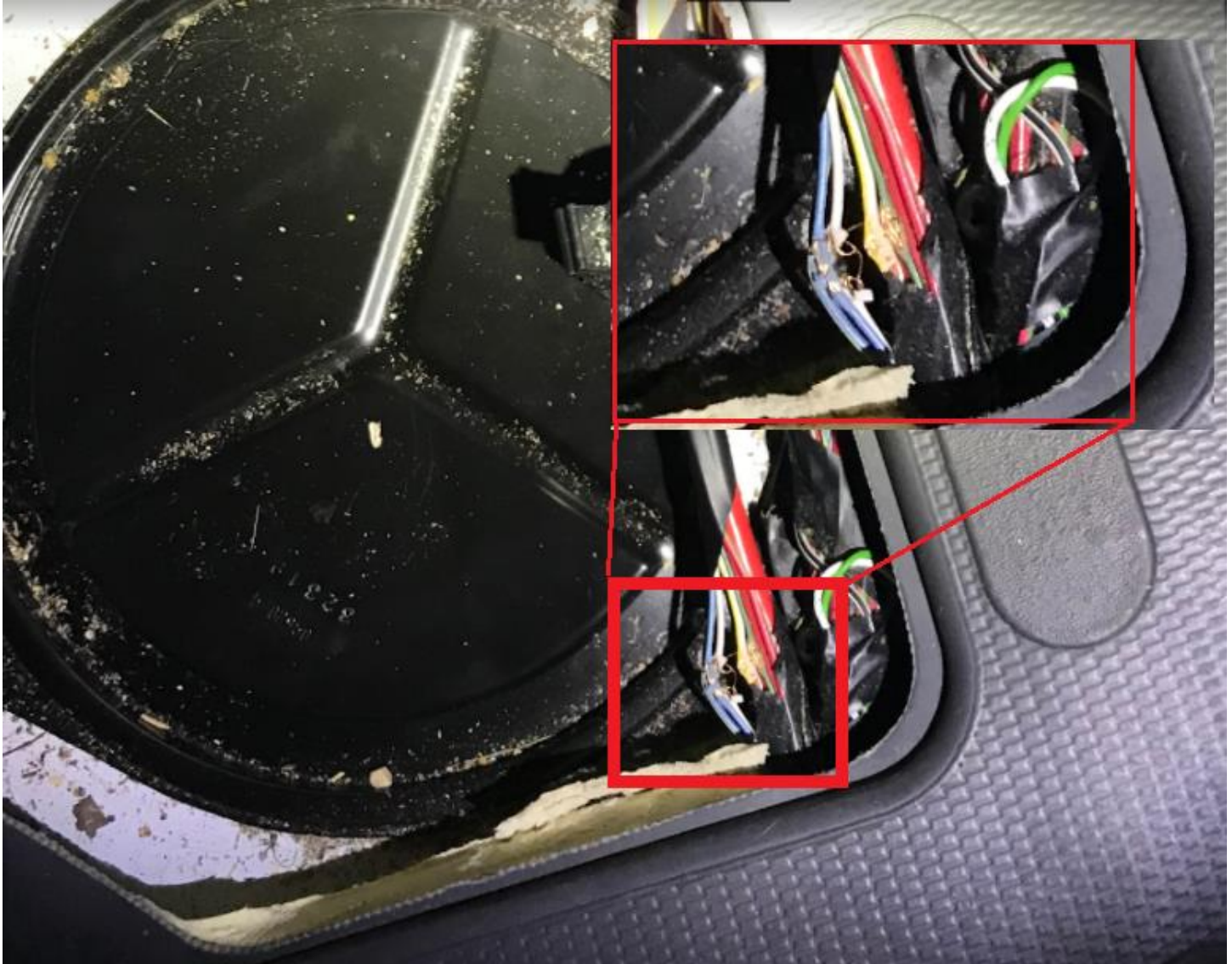
**Diagnosis:** Remove the access panel and inspect for damaged wiring. Commonly the CAN B circuits are damaged.



This document does not authorize warranty repairs. This communication documents a record of past experiences. STAR Online does not provide any conclusions about what is wrong with the vehicle. Rather, it captures all previous cases known that appear to be similar or related to the vehicle symptom / condition. You are the expert, and you are responsible for deciding on the appropriate course of action.

**Contact STAR Center, or your Technical Assistance Center Via TechCONNECT or eCONTACT ticket if no solution is found**

## STAR ONLINE PUBLICATION



**Repair:** Repair the wiring as necessary using standard procedures. Reroute the harness away from the access panel lock tab. Be sure it is routed in a way that the circuits can no longer be damaged.

This document does not authorize warranty repairs. This communication documents a record of past experiences. STAR Online does not provide any conclusions about what is wrong with the vehicle. Rather, it captures all previous cases known that appear to be similar or related to the vehicle symptom / condition. You are the expert, and you are responsible for deciding on the appropriate course of action.

**Contact STAR Center, or your Technical Assistance Center Via TechCONNECT or eCONTACT ticket if no solution is found**