

INSPECTION OF ENGINE SCREW PLUGS

AFFECTED MODELS:

2019 1090 ADVENTURE

2019 1290 SUPER ADVENTURE R

2019 1290 SUPER ADVENTURE S

RESTRICTIONS: AFFECTED MODELS ARE LINKED BY VIN IN KTM DEALER.NET

INITIAL INFORMATION:

It has been determined that during the engine assembly process that the two screw plugs on the underside of the engine shown in Fig. 2 possibly were not tightened to the specified tightening torque on the following models: 2019 1090 Adventure, 2019 1290 Super Adventure R and 2019 1290 Super Adventure S.

The torque of these two screw plugs needs to be checked in order to prevent any leaks. Dealers must perform the torque check on all affected motorcycles in their inventory prior to any customer delivery. Please contact all of your customers who own affected motorcycles to have the screw plugs checked soon as possible.



Fig. 1 – Motorcycle side view

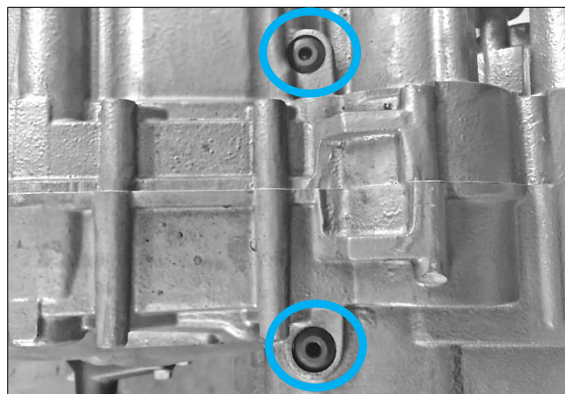


Fig. 2 – Screw plugs on the underside of the engine housing

COPYRIGHT NOTICE: The user acknowledges that all components of this technical information are KTM's and/or third parties' copyright protected property. Alteration, assignment, distribution and reproduction are forbidden.

LIMITATION OF LIABILITY: The information included in or available through this technical information may include inaccuracies or errors. In no event shall KTM and/or its suppliers be liable for any damages whatsoever, arising out of or in connection with the use of this technical information. Please always refer to the KTM owners and repair manuals for proper instructions or contact the KTM Dealer Services Department.

KTM NORTH AMERICA, INC.

38429 Innovation Court // Murrieta, CA 92563
1119 Milan Avenue // Amherst, OH 44001
8701 Rue Samuel-Hatt // Chambly, QC J3L-6V4
www.ktm.com

PROCEDURE FOR REPAIR:

1. Remove the skid plate (if fitted).
2. Remove any dirt from the hexagon socket of the screw plugs.
3. Check the torque of both screw plugs shown in Fig. 2 using a 5 mm hexagon socket and torque wrench.
4. Tighten the two screw plugs to the specified tightening torque of 15 Nm.
5. Mount the skid plate (if fitted).

Screw	Torque	Remark
M10x1	15 Nm	5 mm hexagon socket

WARRANTY INPUT INFORMATION:

This Technical Bulletin only affects certain VIN numbers! Please check the VIN by performing a Motorcycle History search in KTM Dealer.net to determine if it's affected. If the motorcycle is affected you will see a link to the bulletin and its repair status in the history results. KTM North America will not warranty units whose VIN numbers are not linked as this bulletin does not apply to them. It is the responsibility of the dealer to determine if the unit requires this update by checking the vehicle history and understanding the instructions provided by this bulletin.

Please note that when entering a warranty claim on an affected model, you must perform a vehicle history search, expand the **Technical information** window and click the orange arrow on the right side of the corresponding bulletin message.

You can now choose the TI Number from the list. The TI number for this procedure is according to the repairs performed and listed in the warranty claim input information; click **Continue with selected action code**.

The Warranty Claim is automatically entered for you, including parts & labor. You must enter additional information in the required fields marked with an asterisk "*" before submitting the claim to KTM. The flat rate time for this repair is based on the action performed and provided in minutes.

Warranty type:	
TI warranty	
Assembly group:	
30 – engine case	
Damage code:	
510 – wrong installation	
Part causing failure:	
77336056095 – Screw plug M10x1	
Action code, parts, labor time:	
Action code:	30_1113112_00 - Inspection of engine screw plugs
Labor time:	15 minutes
Parts:	None
Are stock items affected: NO	

COPYRIGHT NOTICE: The user acknowledges that all components of this technical information are KTM's and/or third parties' copyright protected property. Alteration, assignment, distribution and reproduction are forbidden.

LIMITATION OF LIABILITY: The information included in or available through this technical information may include inaccuracies or errors. In no event shall KTM and/or its suppliers be liable for any damages whatsoever, arising out of or in connection with the use of this technical information. Please always refer to the KTM owners and repair manuals for proper instructions or contact the KTM Dealer Services Department.

KTM NORTH AMERICA, INC.

38429 Innovation Court // Murrieta, CA 92563
 1119 Milan Avenue // Amherst, OH 44001
 8701 Rue Samuel-Hatt // Chambly, QC J3L-6V4
 www.ktm.com

