

# SS 1022946 Thomas New Belt Guard HDX

---

This Service Solution does not imply any special warranty coverage. Standard warranty guidelines and coverage apply. This Service Solution is provided to assist Dealers/Customers in adding belt guard to the engine on HDX units with the New Service shelf. also the attach is the newer version as Thomas has put in production to help replace the older version with the tabs on the cage.

Applicable Vehicles  
HDX 2015

## Symptoms

Missing belt Guard of breaking the Tabs  
on the older version of the Belt Guard.

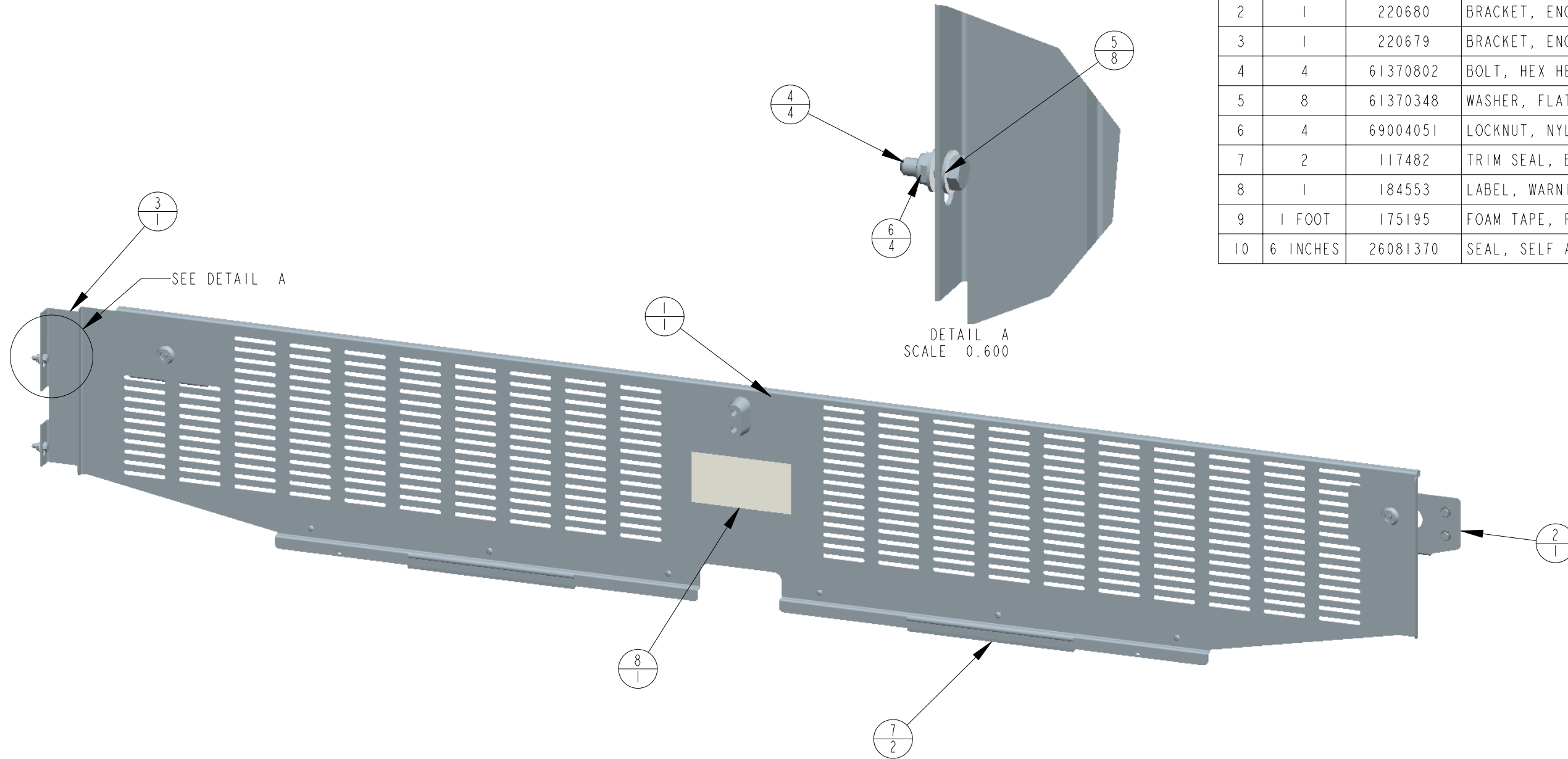
## Issue

A New design Service shelf was implemented in production.

## Solution:

Attach instruction provided to install the Guard.

ITEM	QUANTITY	PART NUMBER	DESCRIPTION
1	1	220682	ENGINE BELT GUARD, ASSEMBLY, HDX
2	1	220680	BRACKET, ENGINE BELT GUARD, RS, HDX
3	1	220679	BRACKET, ENGINE BELT GUARD, LS, HDX
4	4	61370802	BOLT, HEX HEAD, 1/4-20 X 3/4
5	8	61370348	WASHER, FLAT, .281 ID, .625 OD,
6	4	69004051	LOCKNUT, NYLON, 1/4"-20, NTE,
7	2	117482	TRIM SEAL, BULB GASKET
8	1	184553	LABEL, WARNING-MOVING PARTS
9	1 FOOT	175195	FOAM TAPE, PVC
10	6 INCHES	26081370	SEAL, SELF ADHESIVE, RUBBER SPONGE



**INSTALLATION NOTES:**

1. TRIM SEAL ATTACHES TO THRESHOLD ON REAR OF BUS  
MAIN PANEL SITS ON TOP OF BULB OF TRIM SEAL  
SEE SLIDE 4.
2. DRIVER'S SIDE BOLTS (61370802) SHOULD BE MOUNTED WITH BOLT HEADS  
TO THE INSIDE OF THE BUS TO PREVENT INTERFERENCE WITH THE REAR DOOR  
GAS SPRINGS.
3. WASHER (61370348) SHOULD BE ON ALL MOUNTING POINTS  
ON BOTH BOLT HEAD AND NUT SIDE.

DELIVERY MUST CONFORM EXACTLY WITH DRAWING SPECIFICATIONS AND, WHERE REQUIRED BY Q.A., WITH APPROVED Q.A. SAMPLES. ABSOLUTELY NO CHANGES ARE PERMITTED WITHOUT PRIOR APPROVAL BY THOMAS BUILT BUSES. THIS INCLUDES CHANGES TO: SOFTWARE, MATERIALS, INTERNAL COMPONENTS AND MANUFACTURING PROCESSES.

**NOTES:**

- 1) MATERIAL: PLEASE SEE INDIVIDUAL PART DRAWINGS
- 2) CALCULATED WEIGHT: 19.493 LBS
- 3) BURRS: N/A
- 4) FINISH: N/A
- 5) COLOR: N/A
- 6) REFERENCE: N/A
- 7) PART NUMBER IDENTIFICATION: ALL COMPONENTS/ASSEMBLIES BEING PROVIDED TO TBB  
BY AN OUTSIDE SUPPLIER SHALL HAVE THE TBB PART NUMBER PERMANENTLY IDENTIFIED THROUGH AN ACCEPTABLE MARKING METHOD AS DESCRIBED BY 49-00051.

CHG NO.:	ECR.14339	CHG DATE:	02/26/19
REV BY:	E.CHAPMAN	REVIEWED BY:	D.SULLIVAN
REVISION DESCRIPTION	RELEASED.	APPROVED BY:	K.FRAZIER

TOLERANCE UNLESS OTHERWISE SPECIFIED			THIRD ANGLE PROJECTION
DECIMAL INCH	METRIC [mm]	ANGULAR	
.XXX ±.015	.XXX ±0.5	±1°	
.XX ±.06	.XX ±1.0		
.X ±.1	.X ±1.5		

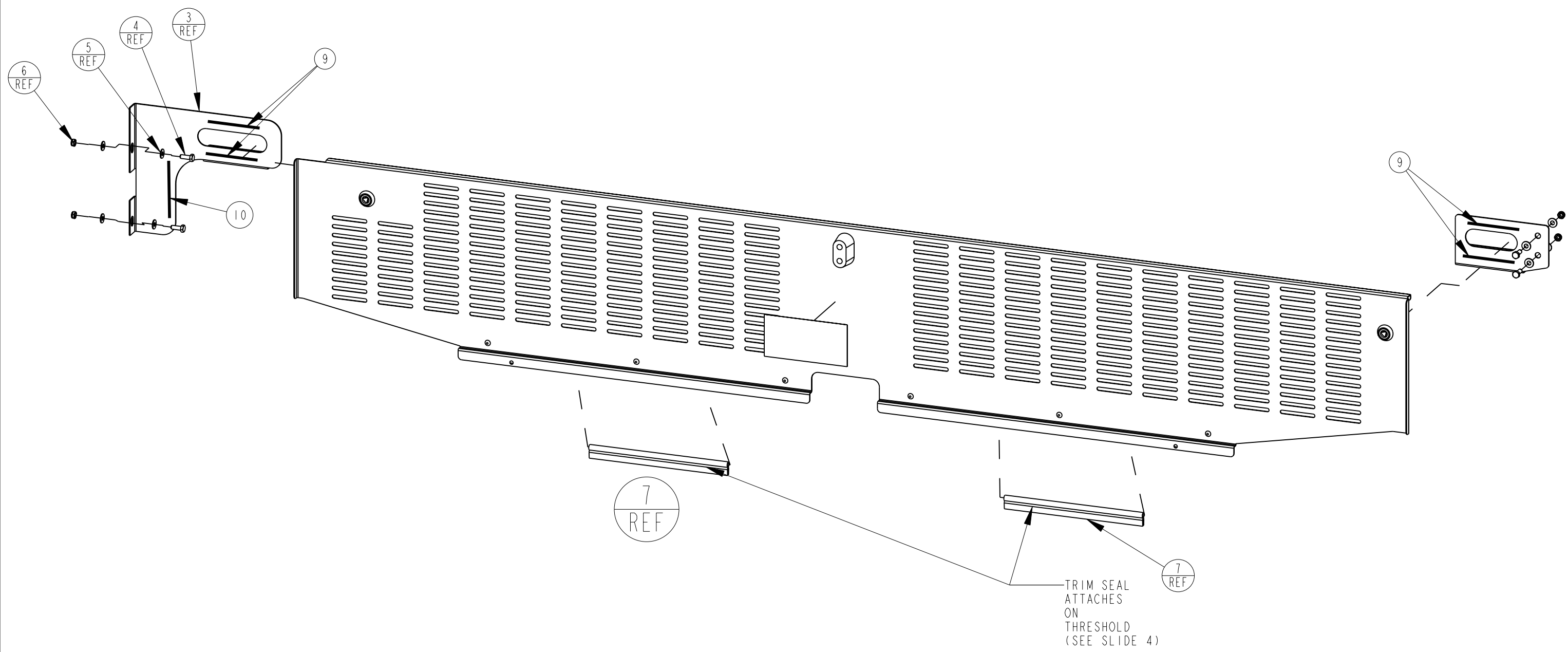
**Thomas** THOMAS BUILT BUSES, INC.  
HIGH POINT, NC USA

THE INFORMATION CONTAINED HEREIN IS CONFIDENTIAL AND PROPRIETARY TO THOMAS BUILT BUSES, INC. AND SHALL NOT BE COPIED, REPRODUCED, DISCLOSED, PUBLISHED, OR USED FOR ANY PURPOSE WITHOUT THE EXPRESS WRITTEN PERMISSION OF THOMAS BUILT BUSES, INC. COPYRIGHT © THOMAS BUILT BUSES, INC. ALL RIGHTS RESERVED.

ENGR/DES:	E.CHAPMAN	11/14/18	UNIT OF MEASURE INCH
REVIEWER:	R.LAMBETH	11/14/18	
APPROVER:	K.FRAZIER	11/14/18	

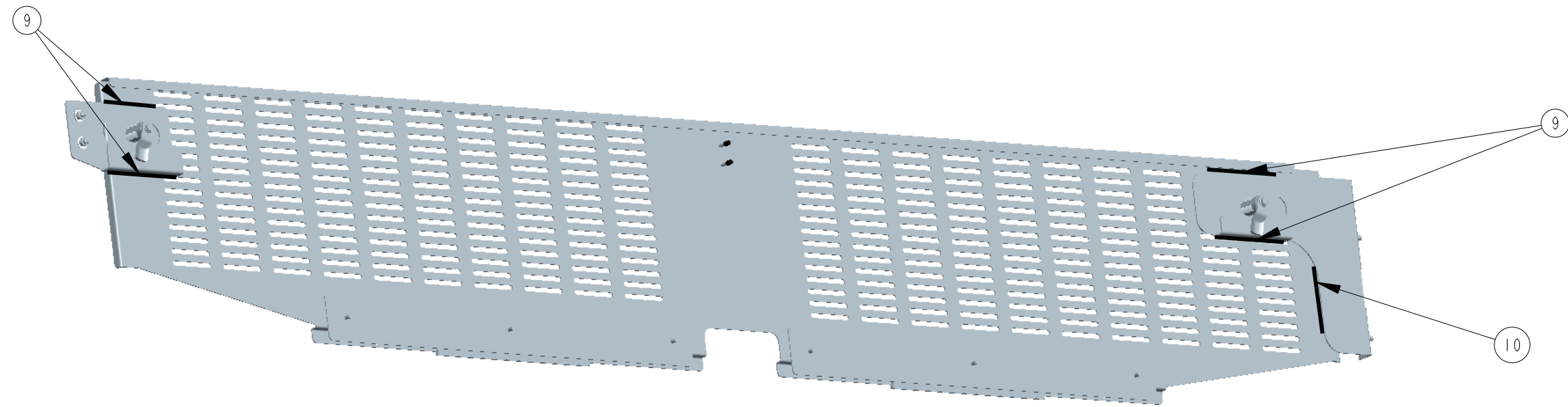
ENGINE BELT GUARD, LEVEL 1, HDX

220683	REV A	CAD VERSION 0+	SHEET 1 OF 4
--------	----------	-------------------	-----------------

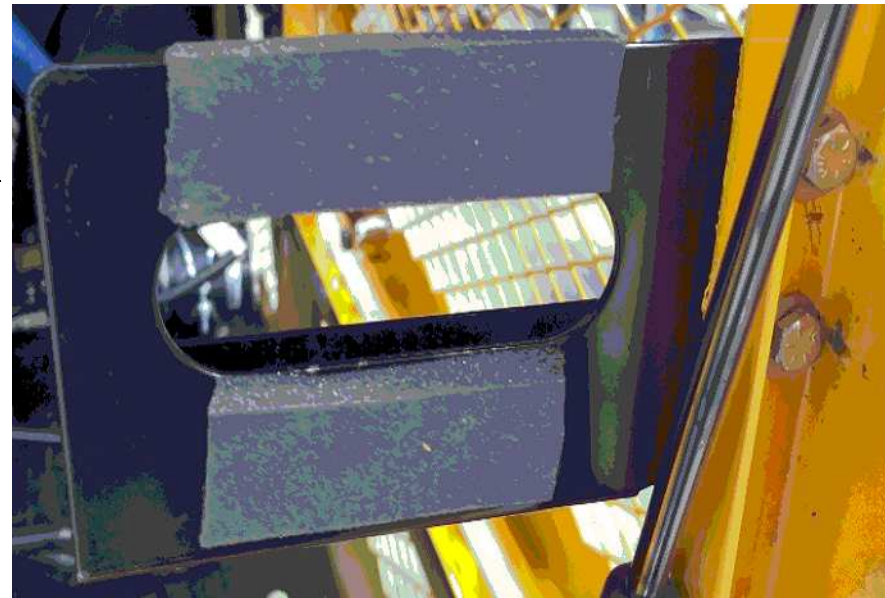


CHG NO.:	ECR.14339	CHG DATE:	02/26/19
REV BY:	E. CHAPMAN	REVIEWED BY:	D. SULLIVAN
REVISION DESCRIPTION	APPROVED BY: K. FRAZIER		
RELEASED.			
TOLERANCE UNLESS OTHERWISE SPECIFIED			THIRD ANGLE PROJECTION
DECIMAL INCH	METRIC [mm]	ANGULAR	
.XXX ±.015	.XXX ±0,5	±1°	
.XX ±.06	.XX ±1,0		
.X ±.1	.X ±1,5		
<b>THOMAS BUILT BUSES, INC.</b> HIGH POINT, NC USA			
<small>THE INFORMATION CONTAINED HEREIN IS CONFIDENTIAL AND PROPRIETARY TO THOMAS BUILT BUSES, INC. AND SHALL NOT BE COPIED, REPRODUCED, DISCLOSED, PUBLISHED, OR USED FOR ANY PURPOSE WITHOUT THE EXPRESS WRITTEN PERMISSION OF THOMAS BUILT BUSES, INC. COPYRIGHT © THOMAS BUILT BUSES, INC. ALL RIGHTS RESERVED.</small>			
ENGR/DES:	E. CHAPMAN	11/14/18	UNIT OF MEASURE INCH
REVIEWER:	R. LAMBETH	11/14/18	
APPROVER:	K. FRAZIER	11/14/18	
ENGINE BELT GUARD, LEVEL 1, HDX			
220683	REV <b>A</b>	CAD VERSION 0+	SHEET 2 OF 4

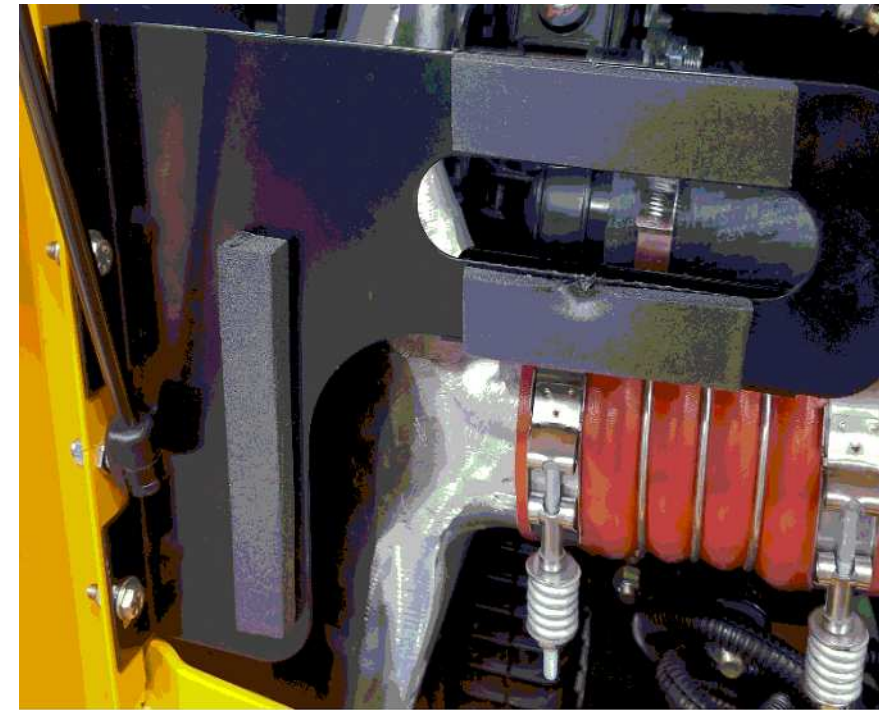
SIZE: B



PLACE 3 INCHES OF 175195 (FOAM) ON BRACKET BELOW SLOT, SHOULD BE BETWEEN BRACKET AND MAIN PANEL



PLACE 3 INCHES OF 175195 (FOAM) ON BRACKET ABOVE AND BELOW SLOT, SHOULD BE BETWEEN BRACKET AND MAIN PANEL



PLACE 6 INCHES OF 26081370 ONE INCH FROM BOTTOM AND ON EDGE (AS SEEN IN THE PICTURE)

CHG NO.:	ECR.14339	CHG DATE:	02/26/19
REV BY:	E.CHAPMAN	REVIEWED BY:	D.SULLIVAN
REVISION DESCRIPTION	APPROVED BY: K.FRAZIER		
RELEASED:			

TOLERANCE UNLESS OTHERWISE SPECIFIED			THIRD ANGLE PROJECTION
DECIMAL INCH	METRIC [mm]	ANGULAR	
.XXX ±.015	.XXX ±0,5	±1°	
.XX ±.06	.XX ±1,0		
.X ±.1	.X ±1,5		

**Thomas** THOMAS BUILT BUSES, INC.  
HIGH POINT, NC USA

THE INFORMATION CONTAINED HEREIN IS CONFIDENTIAL AND PROPRIETARY TO THOMAS BUILT BUSES, INC. AND SHALL NOT BE COPIED, REPRODUCED, DISCLOSED, PUBLISHED, OR USED FOR ANY PURPOSE WITHOUT THE EXPRESS WRITTEN PERMISSION OF THOMAS BUILT BUSES, INC. COPYRIGHT © THOMAS BUILT BUSES, INC. ALL RIGHTS RESERVED.			
ENGR/DES:	E.CHAPMAN	11/14/18	UNIT OF MEASURE INCH
REVIEWER:	R.LAMBETH	11/14/18	
APPROVER:	K.FRAZIER	11/14/18	

ENGINE BELT GUARD, LEVEL 1, HDX

220683	REV <b>A</b>	CAD VERSION 0+	SHEET 3 OF 4
--------	-----------------	-------------------	-----------------

SIZE: B

8

7

6

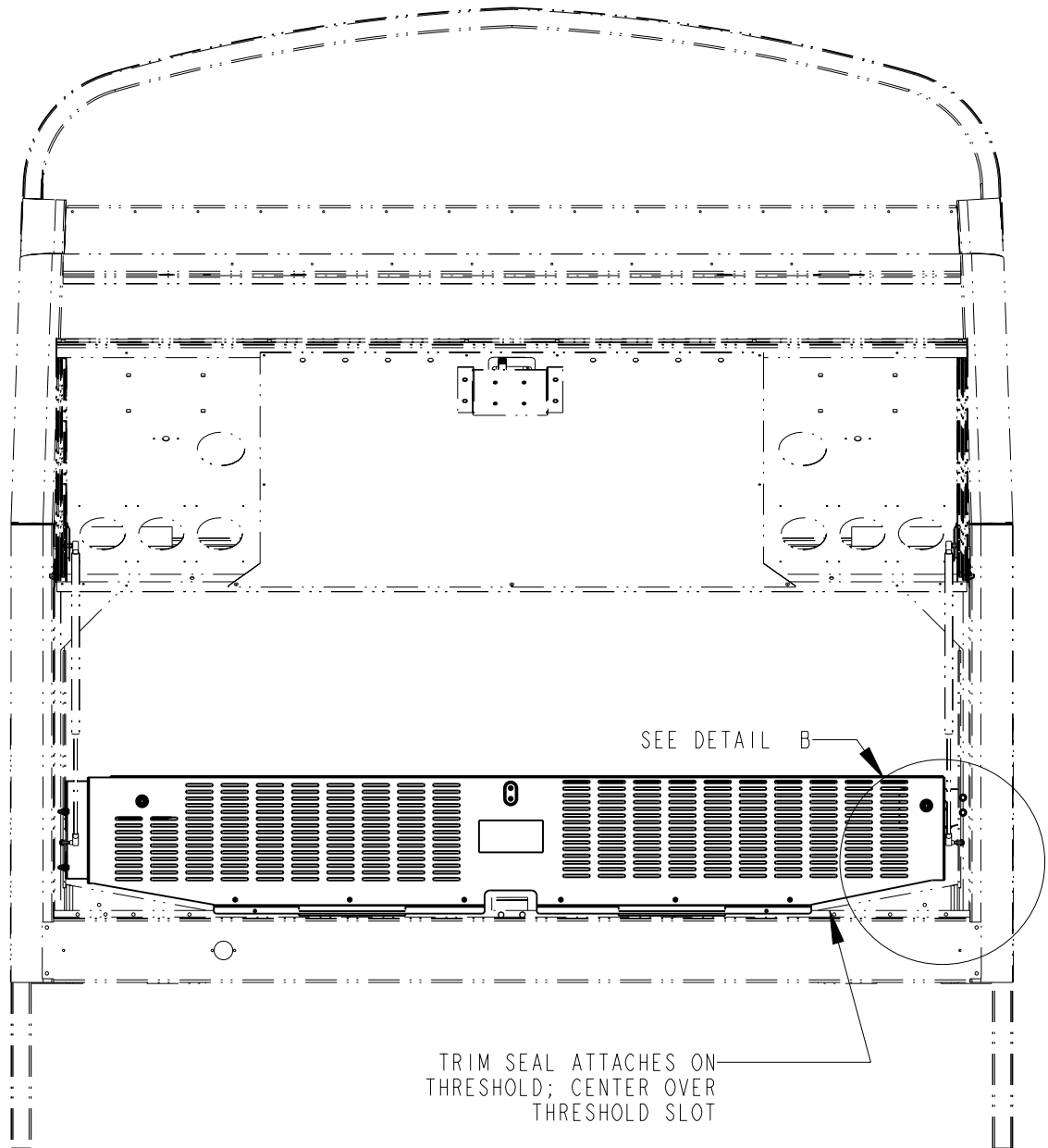
5

4

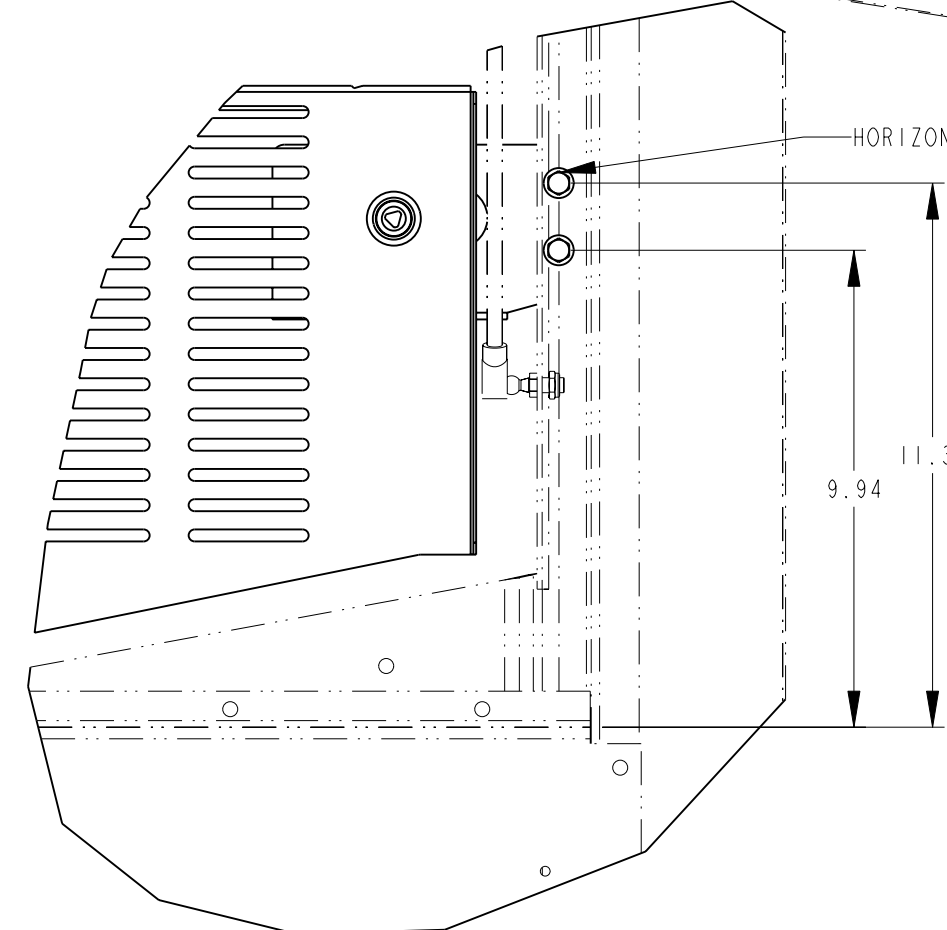
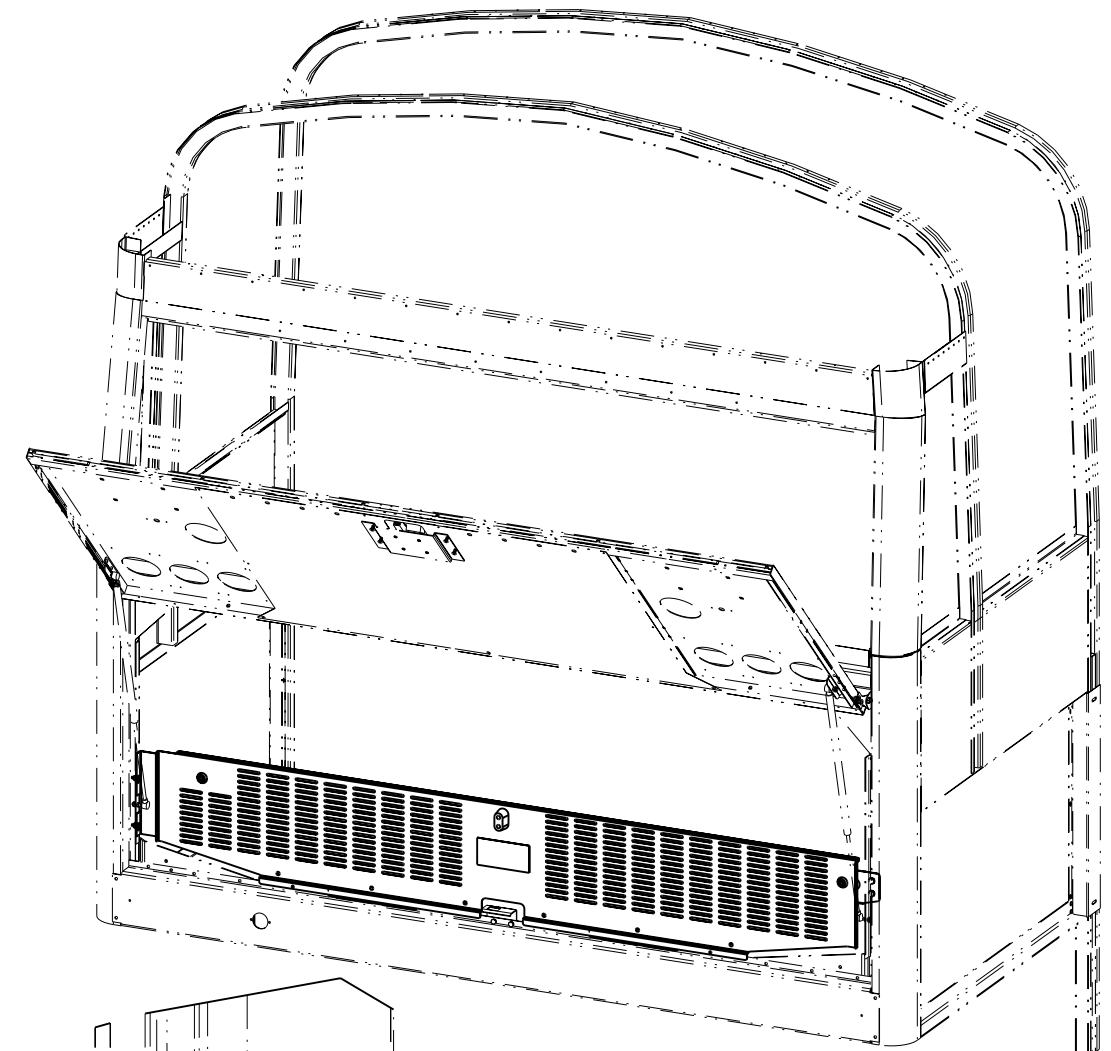
3

2

1



TRIM SEAL ATTACHES ON THRESHOLD; CENTER OVER THRESHOLD SLOT



DETAIL B  
SCALE 0.250

DRILL HOLE LOCATIONS

CHG NO.:	ECR.14339	CHG DATE:	02/26/19
REV BY:	E. CHAPMAN	REVIEWED BY:	D. SULLIVAN
REVISION DESCRIPTION	APPROVED BY: K. FRAZIER		

TOLERANCE UNLESS OTHERWISE SPECIFIED			THIRD ANGLE PROJECTION
DECIMAL INCH	METRIC [mm]	ANGULAR	
.XXX ±.015	.XXX ±0.5	±1°	
.XX ±.06	.XX ±1.0		
.X ±.1	.X ±1.5		

**Thomas** THOMAS BUILT BUSES, INC.  
HIGH POINT, NC USA

THE INFORMATION CONTAINED HEREIN IS CONFIDENTIAL AND PROPRIETARY TO THOMAS BUILT BUSES, INC. AND SHALL NOT BE COPIED, REPRODUCED, DISCLOSED, PUBLISHED, OR USED FOR ANY PURPOSE WITHOUT THE EXPRESS WRITTEN PERMISSION OF THOMAS BUILT BUSES, INC. COPYRIGHT © THOMAS BUILT BUSES, INC. ALL RIGHTS RESERVED.

ENGR/DES:	E. CHAPMAN	11/14/18	UNIT OF MEASURE INCH
REVIEWER:	R. LAMBETH	11/14/18	
APPROVER:	K. FRAZIER	11/14/18	

ENGINE BELT GUARD, LEVEL 1, HDX

220683	REV <b>A</b>	CAD VERSION 0+	SHEET 4 OF 4
--------	-----------------	-------------------	-----------------

8

7

6

5

4

3

2

1

SIZE: B