

SS: 1034790 TBB buzzer sounds when either driver's door or the entrance door is open

This Service Solution does not imply any special warranty coverage. Standard warranty guidelines and coverage apply. This Service Solution is provided to assist Dealers/Customers in resolving the buzzer sounding when either the driver's door or entrance door is open. If the unit has either option B2001-36-000 or 32 or 37 Child Reminder System or Checkmate, the Diode was being removed from the harness 220479 on circuit SA30_E. This was a misunderstanding of the option operation.

Applicable Vehicles

Minotour

Symptoms

Buzzer sounds when the entrance door or driver's door is open

Issue

Diode was being removed as a misunderstanding of the option content

Solution:

Reinstall the diode per diagram TBB 219164 on Circuit SA30_E

SS: 1034790 TBB buzzer sounds when either driver's door or the entrance door is open



Subject: Buzzer sounds when either Driver Door or Entrance door open

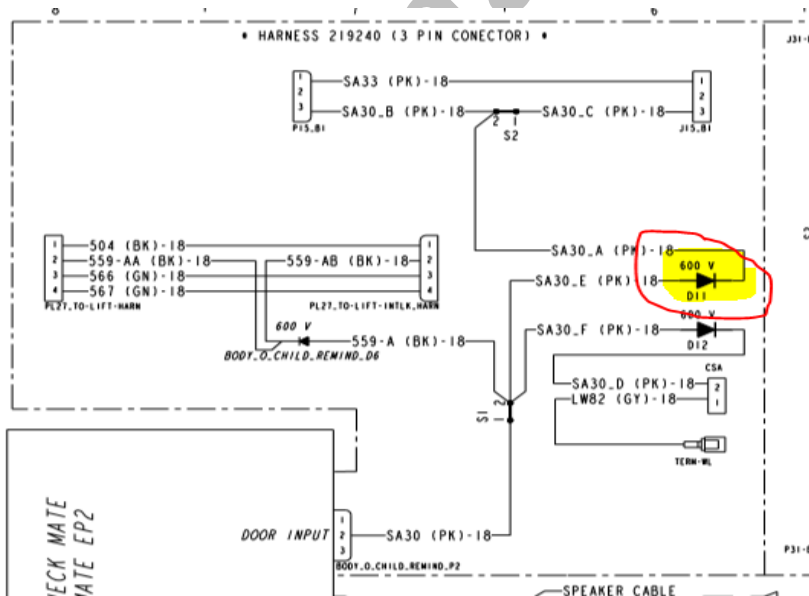
Date: 8/28/2020

Page: 1 of

Symptom #

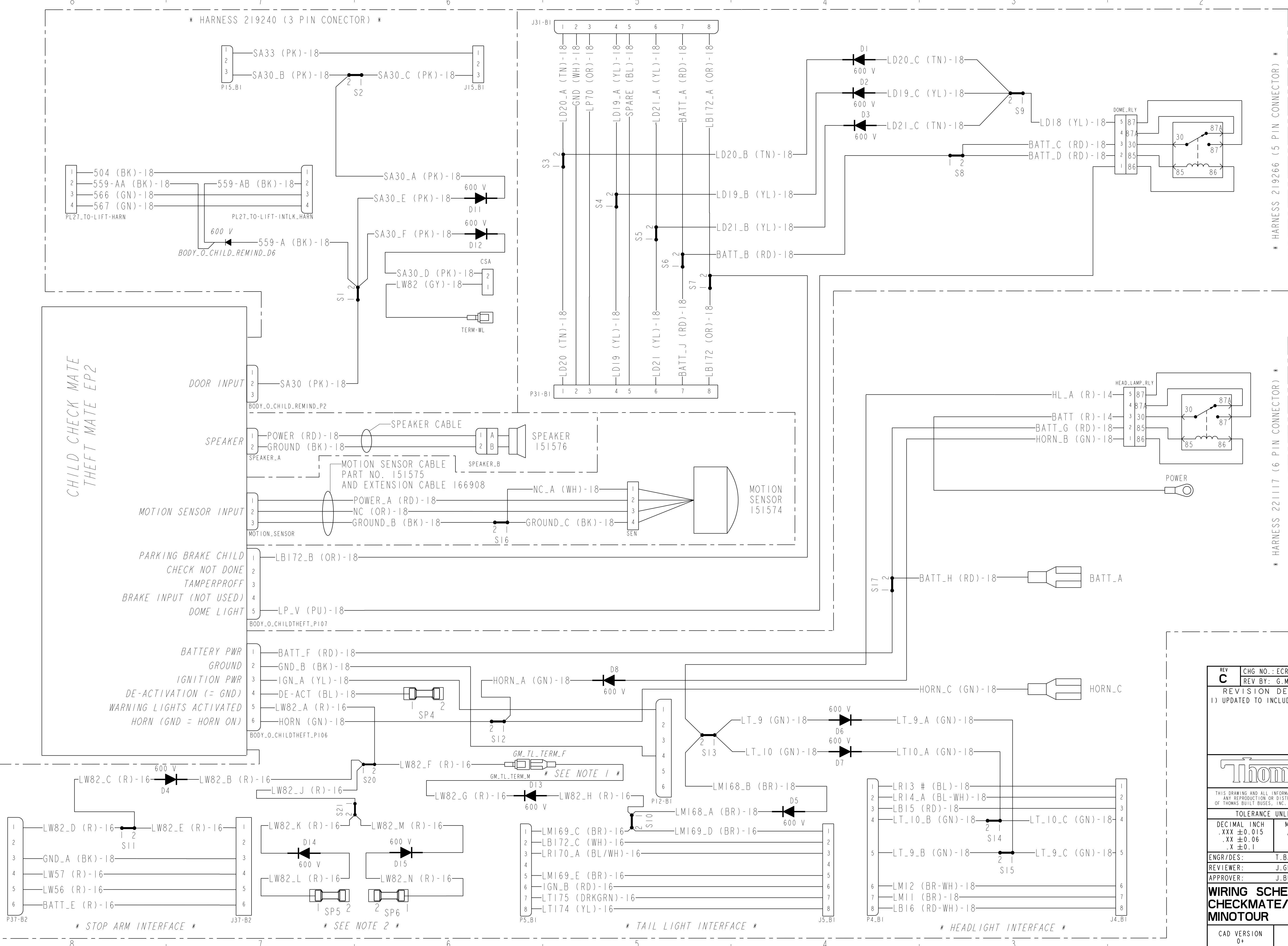
This Service Solution does not imply any special warranty coverage. Standard warranty guidelines and coverage apply. This Service Solution is provided to assist Dealers/Customers in resolving the Buzzer sounding when Drivers Door or Entrance door open, If unit has option B2001-36-000 or 32 or 37,Child reminder system, Checkmate the Diode was being removed from the Harness 219164, circuit SA30_E. this was a miss understanding of the option operation. Install the diode as seen below

Service Solution



Initiator: **R Myers / Mark Billings**

* HARNESS 219240 (3 PIN CONECTOR) *



* HARNESS 219266 (5 PIN CONECTOR) *

* HARNESS 221117 (6 PIN CONECTOR) *

* NOTE 1: GM_TL_TERM_F AND GM_TL_TERM_M TERMINALS SHOULD BE CONNECTED TOGETHER WHEN INSTALLED ON A GM CHASSIS. DO NOT CONNECT ON A FORD CHASSIS!

* NOTE 2: ON A FORD CHASSIS SPLICE SP5 AND SP6 DIRECTLY INTO THE HEADLIGHT LOW AND HIGH BEAM CIRCUITS. IT DOESN'T REALLY MATTER WHICH ONE IS WHICH, AS LONG AS EACH CIRCUIT IS TAPPED AND SPLICED. DO NOT CONNECT AT ALL ON A GM CHASSIS!

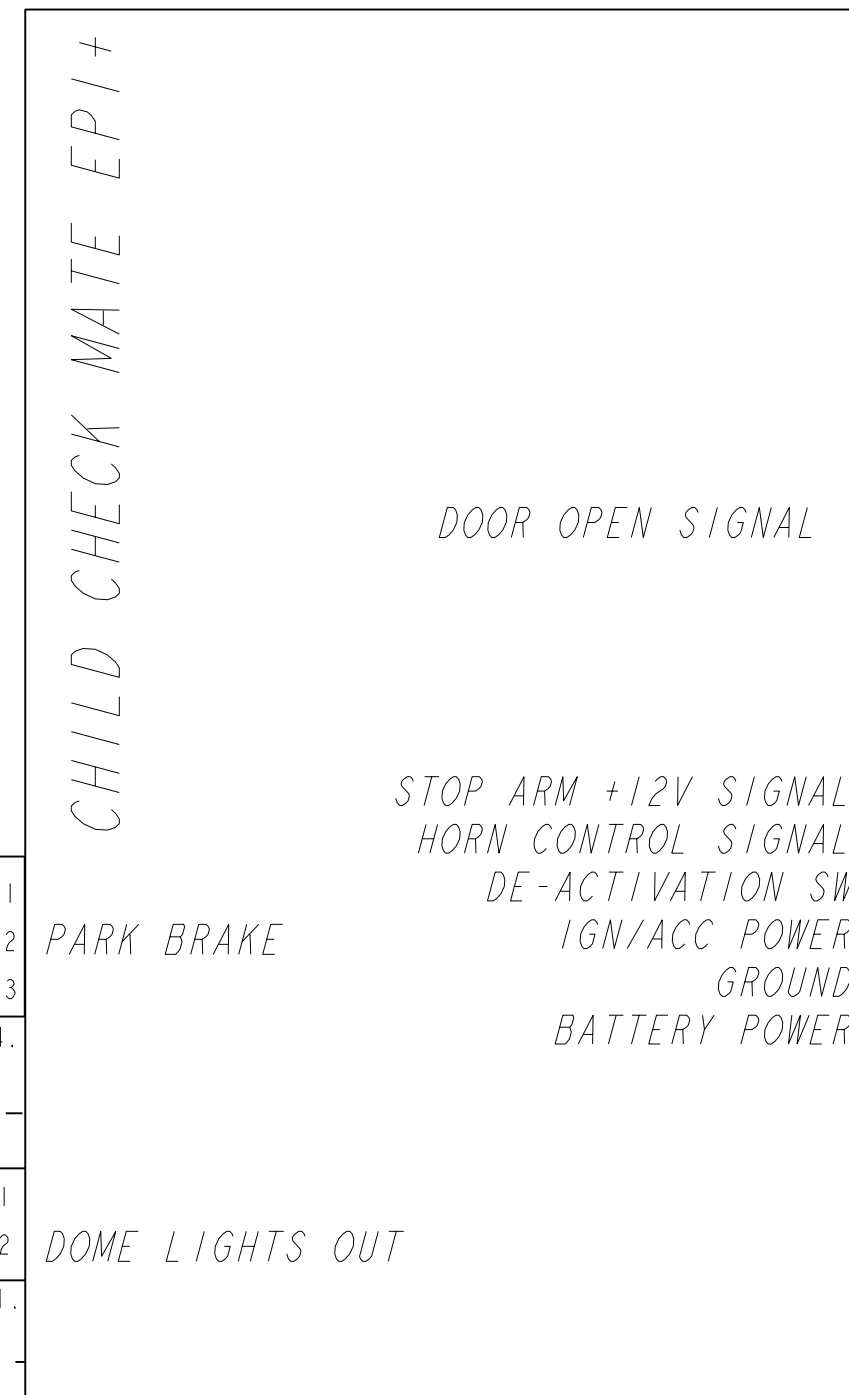
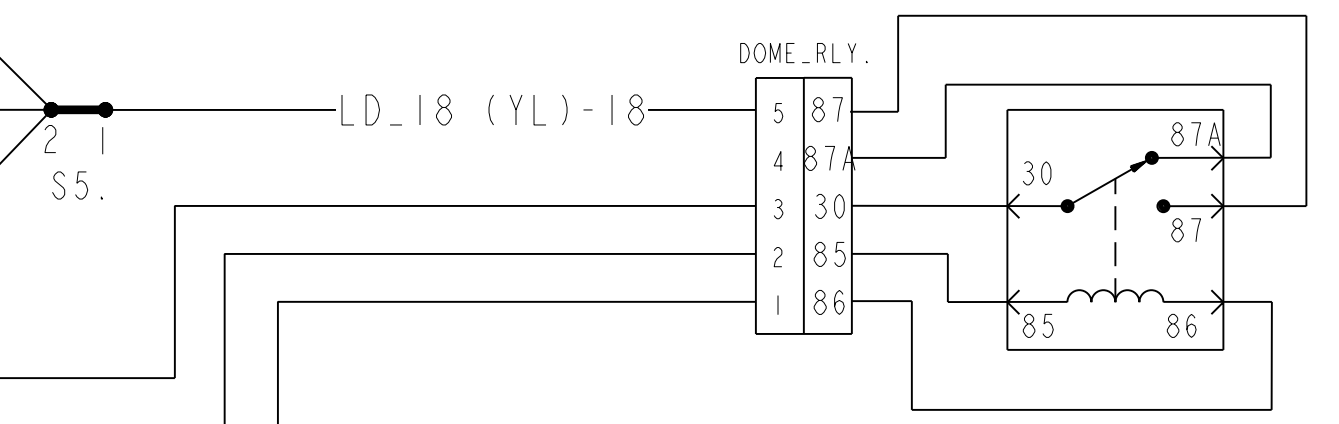
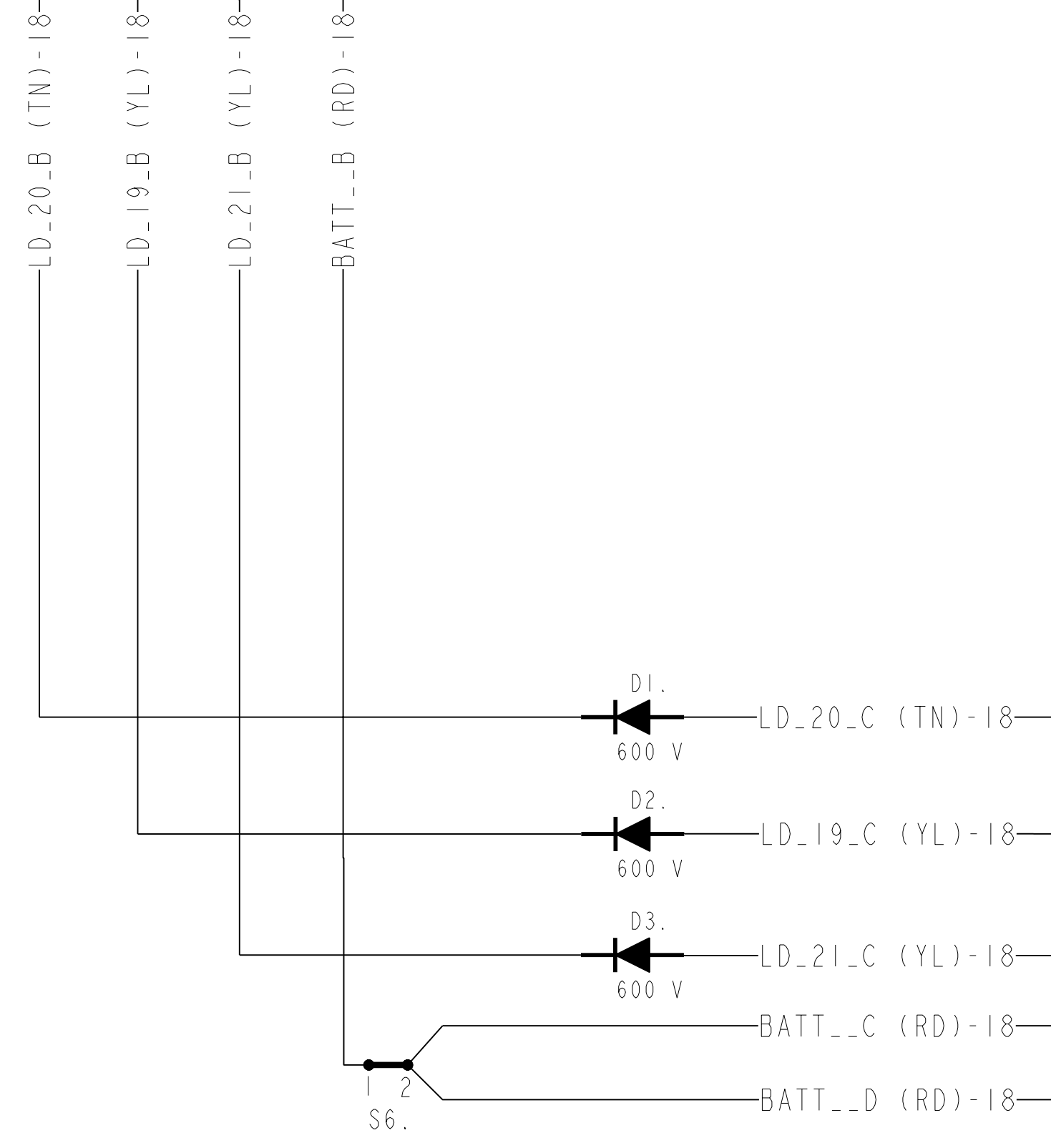
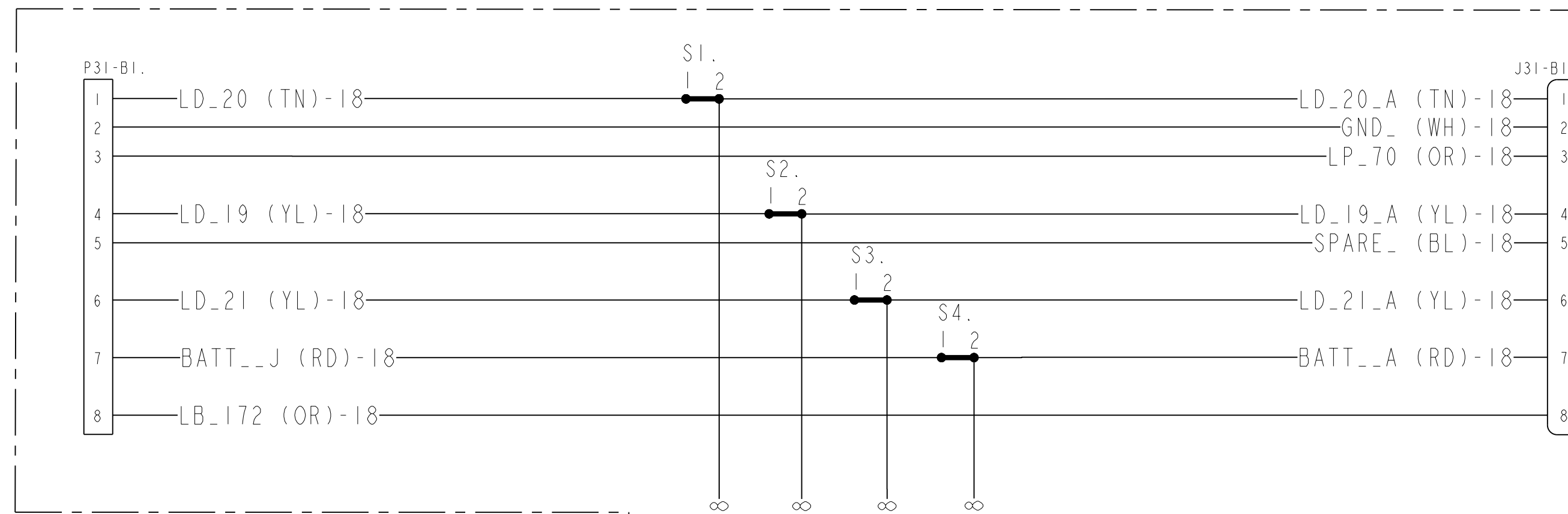
REV C	CHG NO.: ECR-14436	CHG DATE: 11/20/2018
	REV BY: G.MOODY	REVIEWED BY: F.BYERLY
REVISION DESCRIPTION		APPROVED BY: J.BULLINS
1) UPDATED TO INCLUDE SECOND FORD HEADLIGHT SPLICE		

Thomas THOMAS BUILT BUSES, INC.
HIGH POINT, NC USA

THIS DRAWING AND ALL INFORMATION PROVIDED WITH IT, IS THE PROPERTY OF THOMAS BUILT BUSES, INC. ANY REPRODUCTION OR DISTRIBUTION OF THIS MATERIAL OR ANY PART WITHOUT WRITTEN PERMISSION OF THOMAS BUILT BUSES, INC. IS STRICTLY PROHIBITED. COPYRIGHT © 1997 THOMAS BUILT BUSES, INC.

TOLERANCE UNLESS OTHERWISE SPECIFIED			THIRD ANGLE PROJECTION
DECIMAL INCH .XXX ±0.015 .XX ±0.06 .X ±0.1	METRIC [mm] .XXX ±0.5 .XX ±1.0 .X ±1.5	ANGULAR ±1°	
ENGR/DES: T.BANAS	4/30/2018	SIZE D	UNIT OF MEASURE INCH
REVIEWER: J.GRATE	4/30/2018		
APPROVER: J.BULLINS	4/30/2018		

**WIRING SCHEMATIC
CHECKMATE/THEFTMATE EP2
MINOTOUR**



* CONNECT TO HARNESS 219266 (5 PIN CONNECTOR) EXACTLY THE SAME AS EP2 PLUS *

* CONNECT TO HARNESS 219286 (6 PIN CONNECTOR) EXACTLY THE SAME AS EP2 PLUS *

* JUMPER PROVIDED BY SUPPLIER *

* HARNESS 220479 (2 PIN CONNECTOR) *

REV	CHG NO.: ECR-14436	CHG DATE: 11/20/2018
C	REV BY: G.MOODY	REVIEWED BY: F.BYERLY
REVISION DESCRIPTION		APPROVED BY: J.BULLINS
1) UPDATED TO INCLUDE SECOND FORD HEADLIGHT SPLICE		

Thomas THOMAS BUILT BUSES, INC.
HIGH POINT, NC USA

THIS DRAWING AND ALL INFORMATION PROVIDED WITH IT, IS THE PROPERTY OF THOMAS BUILT BUSES, INC. ANY REPRODUCTION OR DISTRIBUTION OF THIS MATERIAL OR ANY PART WITHOUT WRITTEN PERMISSION OF THOMAS BUILT BUSES, INC. IS STRICTLY PROHIBITED. COPYRIGHT © 1997 THOMAS BUILT BUSES, INC.

TOLERANCE UNLESS OTHERWISE SPECIFIED			THIRD ANGLE PROJECTION
DECIMAL INCH	METRIC [mm]	ANGULAR	
.XXX ±0.015	.XXX ±0.5	±1°	
.XX ±0.06	.XX ±1.0		
.X ±0.1	.X ±1.5		

ENGR/DES:	T.BANAS	4/30/2018	SIZE	UNIT OF MEASURE		
REVIEWER:	J.GRATE	4/30/2018			D	INCH
APPROVER:	J.BULLINS	4/30/2018				

**WIRING SCHEMATIC
CHECKMATE/THEFTMATE EP2
MINOTOUR**

CAD VERSION	SHEET	219164
0+	2 OF 2	