



SIB 13 02 20 NEW OPTIMIZED TORQUE SOFTWARE

2020-08-27

E-Series	Model Description	Production Date
K67	S 1000 RR	MY2020 and later

SITUATION

New engine software has been developed for the S 1000 RR with an optimized torque curve (aka torque optimized...) for increased torque in 2nd, 3rd and 4th gears; in the RPM range of 4,000 to 8,000 rpm. The software can be retrofitted to all 2020 MY and later US-spec K67 S 1000 RR motorcycles.

The software was developed in response to customer concerns of reduced torque in 2nd through 4th gears in US models to meet federal noise emission standards. This new optimized software has been tested, homologated; and is compliant with the BMW New Motorcycle Limited Warranty.

Due to the new engine calibration the rated engine output will also be changed. However, the benefits of the increased torque will be a noticeable change for both street and track riders.

- | | |
|------------------------------|------------------------------------|
| 1. Standard Engine Software | 205 hp at engine speed: 13,000 rpm |
| 2. Torque Optimized Software | 180 hp at engine speed: 11,500 rpm |

BMW will be offering this new software at no cost to the customer for a limited time. This will allow the customer to experience the new software and decide which version fits their riding style. BMW will also return the vehicle to the standard programming upon customer request at no charge within 90 days after the optimized torque software is installed.

While the programming can be performed multiple times, **only the initial** programming (described above) is covered by BMW. Please review the entire bulletin for complete details before performing this procedure.

PROCEDURE

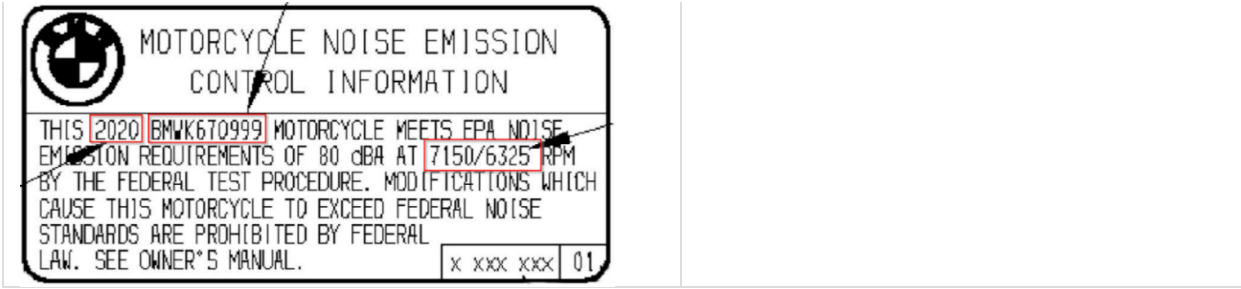
As of ISTA version 4.24.2x (released August 2020), "torque optimized calibration" is now available and appears under "Retrofits". Dealers should download the update and perform the retrofit on a customer request basis.

Retrofits can be performed on all US-specification K67 with type code 0E23 produced up July 31, 2020, as well as newly produced vehicles by following the two paths outlined in this bulletin.

Important: During the programming, the I-Level of the vehicle may also be updated. As a result, programming can take up to 3 hours. Please plan your workshop accordingly.

PATH #1 - US K67 (0E23) produced up to July 31, 2020 (2020 MY).

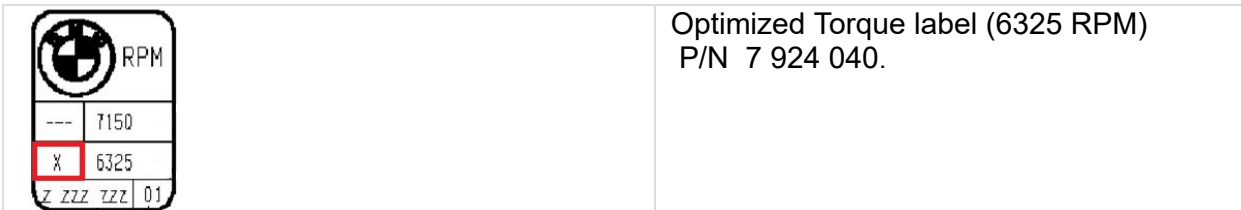
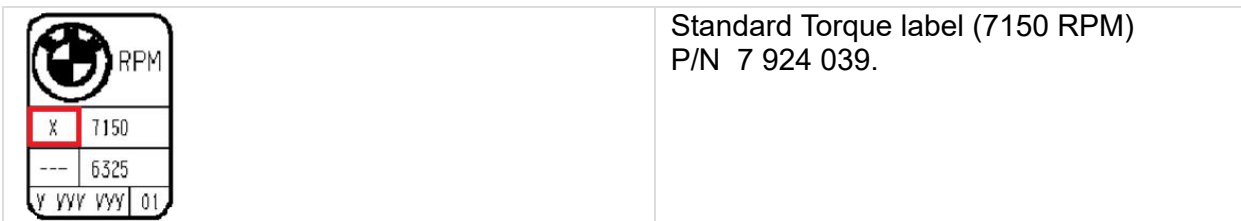
Main noise emission control
information label (7 924 038).



For the first retrofit of the torque optimized software, a new main noise emission control information label (7 924 038) must be applied over the original factory label.

Additionally, a smaller label (shown below) must be fixed next to the main noise emissions control information label showing the current programming status of the vehicle.

If the vehicle software is changed again, only the small label must be updated each time to reflect the programming status (version) of the vehicle.



As a final step, print out the 2-page owner's manual supplement (see attachment) and provide it to the customer. The supplement outlines the change in the rated output of the engine.

General view, left side



05.2020, Order No.: 01 40 9 831 455

General view, left side

1 Noise emission control information

Engine

Rated output	205 hp (151 kW), at engine speed: 13000 min ⁻¹
→ with Torque optimized calibration ^{DE}	190 hp (132 kW), at engine speed: 11500 min ⁻¹

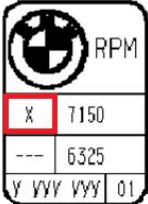
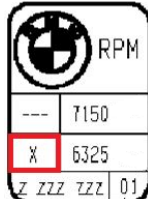
05.2020, Order No.: 01 40 9 831 455

PATH #2 - US K67 produced after July 31, 2020 (2021 MY).

Copyright ©2020 MOTORRAD USA, a division of BMW of North America, LLC. All Rights Reserved

Vehicle produced August 1st 2020 and later (2021 MY) will arrive at your dealership with standard programming. However, customers may elect to have the optimized torque software installed. This can be performed at PDI or later as stated above at no cost to the customer for the initial programming.

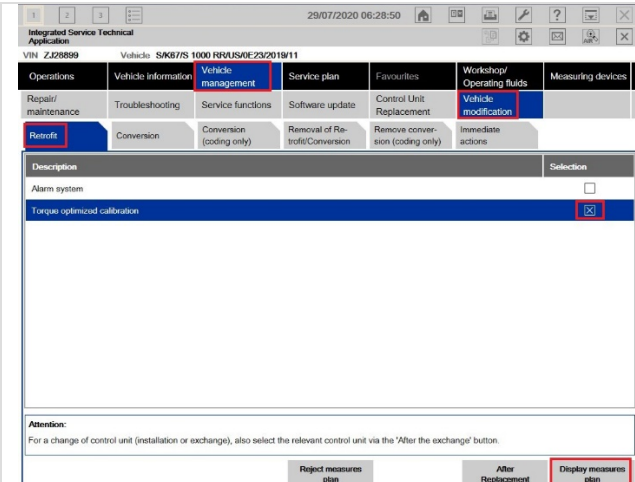
2021 MY vehicles will already have the new (main) noise emission control information label from the factory, therefore only the small label needs to be changed to reflect the programming status of the vehicle

	<p>Standard Torque label (7150 RPM) P/N 7 924 039.</p>
	<p>Optimized Torque label (6325 RPM) P/N 7 924 040.</p>

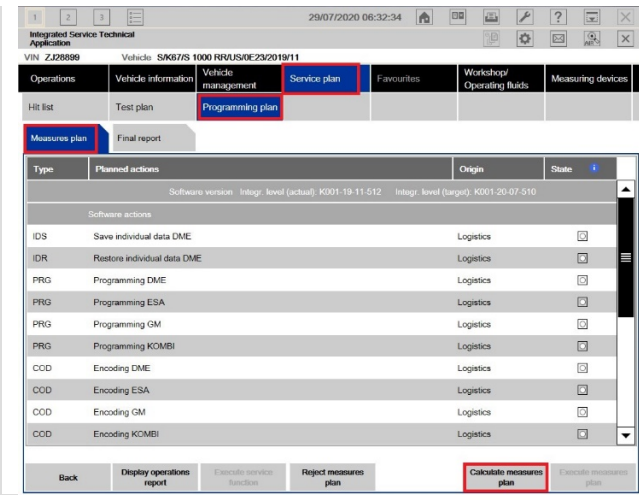
The owner’s manual is already updated therefore the attached supplement does not need to be provided

PROGRAMMING

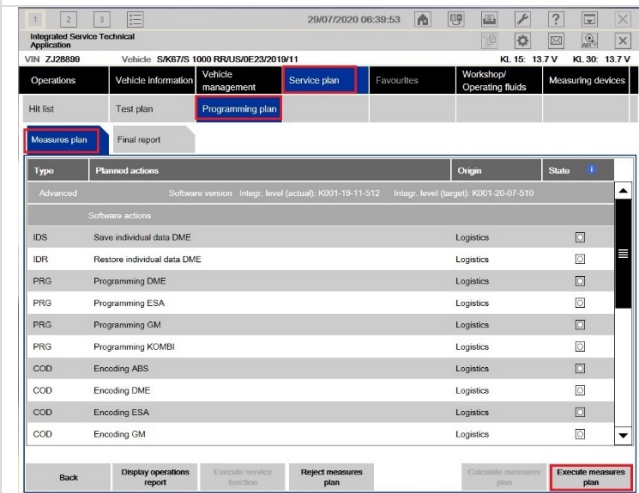
After identifying the vehicle in ISTA, Select: Vehicle management / Vehicle modification / Retrofit / click box for Torque optimized calibration / Select Display measures plan / Service plan / Programming plan / Measure plan / Calculate measures plan / Select Execute measures plan.

	<p>Select - Vehicle management / Vehicle modification / Retrofit / Click box for Torque optimized calibration / Select Display measures plan</p>
--	--

	<p>Service plan / Programming plan / Measure plan are displayed / Select - Calculate measures plan</p>
--	--



Select - Execute measure plan.



PARTS INFORMATION

Part Number	Description
71 22 7 924 038	Main Noise Emissions Label (VIN-specific, coded part)
71 22 7 924 039	Small Emissions Label Standard Programming (7150 rpm)
71 22 7 924 040	Small Emissions Label Torque Optimized Programming (6325 rpm)

WARRANTY INFORMATION

Defect Code:	13 61 90 02 00	Optimization of US 67 data status
Labor Operation:	Labor Allowance:	Description:

77 53 110

5 FRU

Upload control unit data status

Powered by [Froala Editor](#)

Supporting Materials

[picture_as_pdf supplement owners manual.pdf](#)

General view, left side



General view, left side

- 1 Noise emission control information

Engine

Rated output	205 hp (151 kW), at engine speed: 13000 min ⁻¹
– with Torque optimized calibration ^{OE}	180 hp (132 kW), at engine speed: 11500 min ⁻¹