

# Chassis/Supplier Recall

August 26, 2020

Units Affected: Freightliner units upfitted with an AxleTech Independent Front Suspension system (Please verify that your unit serial number is affected by reviewing the attached list in this CSR or by accessing your fleet on [connect.altec.com/login](http://connect.altec.com/login))

## **AxleTech Steering Shaft Replacement/Update**

Altec is committed to providing our customers reliable products from initial delivery throughout the useful life of the unit.

Altec has been notified of a customer satisfaction campaign by AxleTech/Meritor for certain Freightliner units equipped with an AxleTech Independent Front Suspension (IFS) system. Units with this suspension system may have a condition in which there is an uneven resistance felt when turning the steering wheel.

The inspection and repair will be completed by a Meritor servicing Freightliner Dealer.

### **Customers**

- Must complete the Vehicle Information section of the attached Pre-Call Worksheet.
- Must contact a Meritor servicing Freightliner servicing dealer to schedule an appointment, and provide the dealer with the information in the Vehicle Information section of the Pre-call Worksheet (call 866-668-7221 for assistance if required).

### **Meritor Servicing Freightliner Dealer**

- Will contact Meritor and order appropriate parts prior to scheduled appointment.
- Will replace the steering shaft of the affected unit and center the steering wheel at no charge.

### **Altec**

- Will notify customers of the campaign – a copy of the notice is attached to this CSR.
- Is communicating the information provided by Meritor Inc. and has no responsibility to provide the repairs or parts for the campaign. This campaign is not covered under the Altec Warranty Policy.

## Independent Front Suspension (IFS)

# STEERING SHAFT REPLACEMENT

## Hazard Alert Messages

Read and observe all Warning and Caution hazard alert messages in this publication. They provide information that can help prevent serious personal injury, damage to components, or both.

**⚠ WARNING**

**TO PREVENT SERIOUS EYE INJURY, ALWAYS WEAR SAFE EYE PROTECTION WHEN YOU PERFORM VEHICLE MAINTENANCE OR SERVICE.**

**PARK THE VEHICLE ON A LEVEL SURFACE. BLOCK THE WHEELS TO PREVENT THE VEHICLE FROM MOVING. SUPPORT THE VEHICLE WITH SAFETY STANDS. DO NOT WORK UNDER A VEHICLE SUPPORTED ONLY BY JACKS. JACKS CAN SLIP AND FALL OVER. SERIOUS PERSONAL INJURY AND DAMAGE TO COMPONENTS CAN RESULT.**

**TAKE CARE WHEN YOU USE LOCTITE® ADHESIVE TO AVOID SERIOUS PERSONAL INJURY. READ THE MANUFACTURER'S INSTRUCTIONS BEFORE USING THIS PRODUCT. FOLLOW THE INSTRUCTIONS CAREFULLY TO PREVENT IRRITATION TO THE EYES AND SKIN. IF LOCTITE ADHESIVE MATERIAL GETS INTO YOUR EYES, FOLLOW THE MANUFACTURER'S EMERGENCY PROCEDURES. HAVE YOUR EYES CHECKED BY A PHYSICIAN AS SOON AS POSSIBLE.**

**⚠ ASBESTOS AND NON-ASBESTOS FIBERS WARNING**

**SOME BRAKE LININGS CONTAIN ASBESTOS FIBERS, A CANCER AND LUNG DISEASE HAZARD. SOME BRAKE LININGS CONTAIN NON-ASBESTOS FIBERS, WHOSE LONG-TERM EFFECTS TO HEALTH ARE UNKNOWN. YOU MUST USE CAUTION WHEN YOU HANDLE BOTH ASBESTOS AND NON-ASBESTOS MATERIALS.**

## How to Obtain Additional Maintenance, Service and Product Information

Refer to Service Manual SSM-0100 - Commercial Independent Front Suspension. To obtain this publication, visit [axletech.com/en/support/service-manuals](http://axletech.com/en/support/service-manuals).

**HOW TO OBTAIN PARTS**

To order parts, email [Douglas.Greene@meritor.com](mailto:Douglas.Greene@meritor.com).

Description	Part Number
STEERING - SHAFT INTERM LWR	887501275E

## For Additional Support

If you have questions about the procedures in this bulletin, contact Meritor at 920-424-5480 (US and Canada) between 8:00 AM and 5:00 PM ET Monday through Friday.

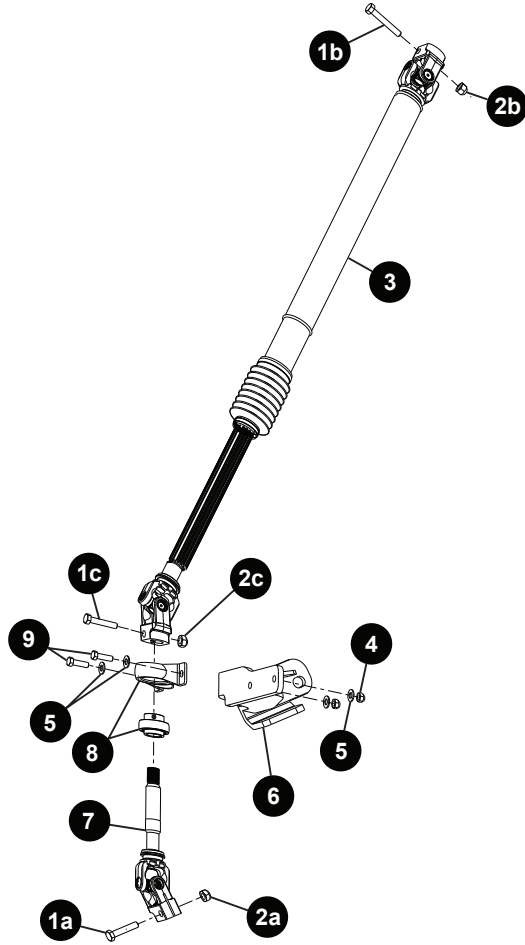
## Prepare the Vehicle for Service

Before you begin, perform these steps to prepare the vehicle for service:

1. Wear eye protection.
2. Park the vehicle on a level surface. Block the wheels to prevent the vehicle from moving.

## Purpose

This bulletin is to provide the procedures when replacing the IFS steering shaft. This bulletin applies to only 15 units currently installed on vehicles.



Item	Description
1	Capscrew
2	Nut
3	Steering Shaft - Upper
4	Nut
5	Washer
6	Column Bracket
7	Steering Shaft - Lower
8	Support Bearing & Bracket
9	Capscrew

## Removal Procedure

1. Remove the capscrew (1a) and nut (2a) securing the lower shaft (7) to the power steering gear assembly.
2. Mark the steering wheel location (in the cab) relative to the interior instrument panel (to enable re-alignment of steering wheel after new shaft installation) using marked tape or similar.
3. Loosen the set screw attaching the bearing (8) on the lower shaft.
4. Remove bearing housing attachment fasteners (4, 5, & 9) to allow bearing housing to float.
5. Separate the upper and lower steering shafts by removing the capscrew (1c) and nut (2c) and pulling apart.
6. Disengage the lower shaft (7) from the bearing (8).
7. Discard the removed lower steering shaft (7) PN 887501196E.

## Installation Procedure

1. Slide the bearing assembly (8) onto the new lower shaft (7) PN 887501275E.
2. Install the upper steering shaft (3) onto the lower steering shaft (7) splines.
3. Apply Loctite 243 blue threadlocker to the steering shaft capscrew (1c) with nut (2c) to secure the upper and lower steering shafts together. Tighten to 45-50 lbs. ft. (61-67 N·m). **T**
4. Install the new lower steering shaft (7) into the power steering gear assembly. Align the splines to ensure the steering wheel alignment marks previously made in the cab match up. It will be helpful to loosely re-install and align the support bearing bracket (8) during the spline and steering wheel alignment process in order to achieve an accurate final result.
5. Fully install the support bearing bracket (8) and attachment capscrews (4, 5, & 9) with Loctite 243 and tighten to 32-36 lbs. ft. (43-49 N·m). **T**
6. Apply Loctite 243 blue threadlocker to the capscrew (1a) and nut (2a) and tighten to 45-50 lbs. ft. (61-67 N·m). **T**
7. Tighten the bearing assembly (8) set screw.
8. Confirm that the wheels and steering wheel are aligned after reassembly and all face in the same direction.

## Return the Vehicle to Service

Before returning the vehicle to service, perform these steps:

1. Ensure the work area is clear of personnel and remove the vehicle safety stands.
2. Remove the wheel blocks.
3. Test drive the vehicle at low speed in an area with no personnel and ensure the steering and brakes are functioning properly.