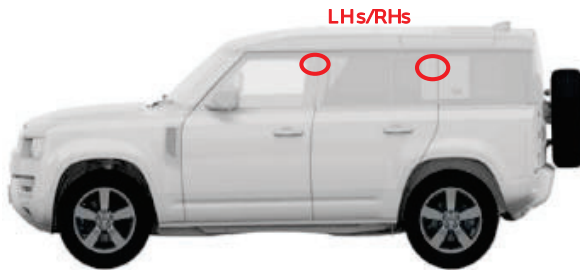


L663\_110 – REAR DOOR APERTURE SEALS CREASING-KINKING  
SSM75002 SERVICE GUIDE



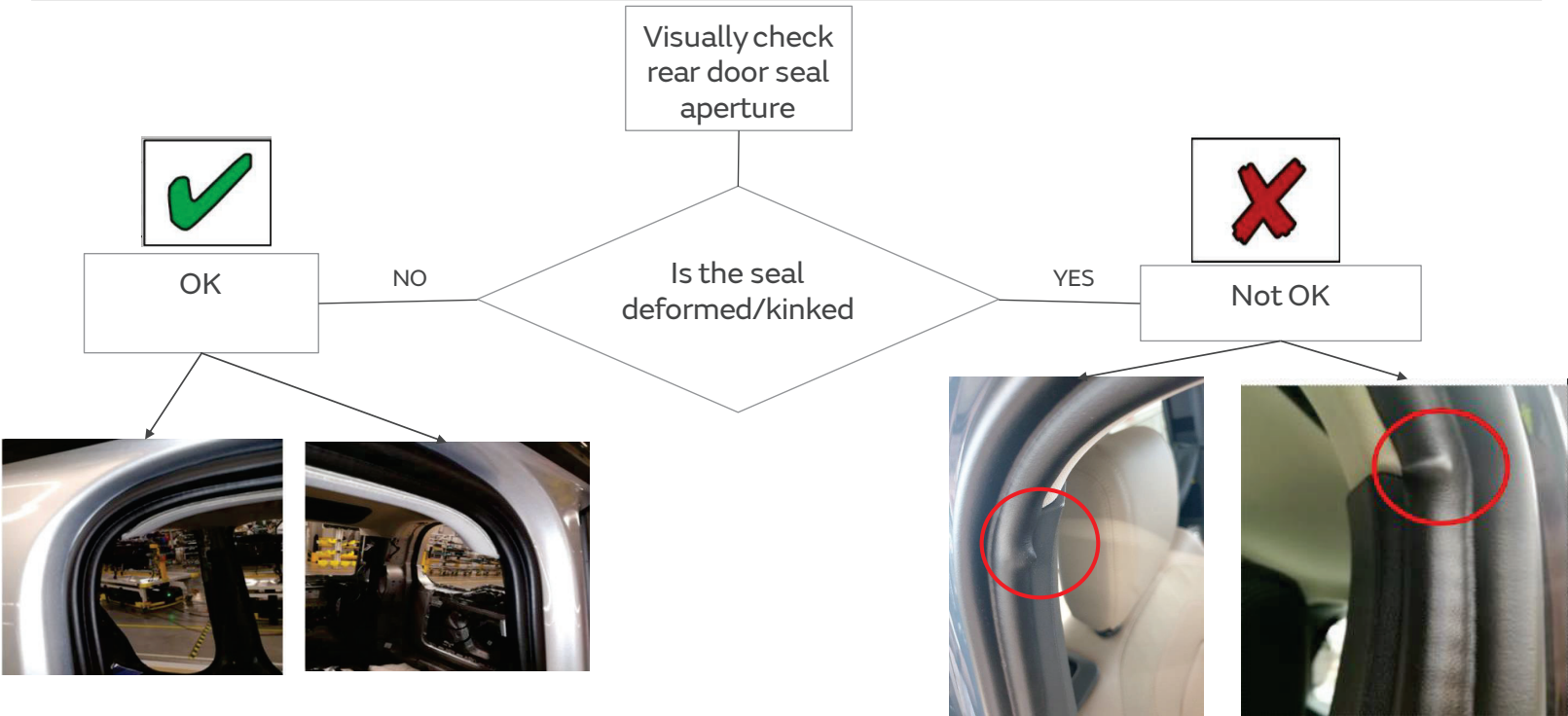
Service guide



LHs/RHs



# Identify the issue



**L663\_110 – Rear door aperture seals creasing-kinking**  
**CREASED-KINKED SECONDARY DOOR SEAL**

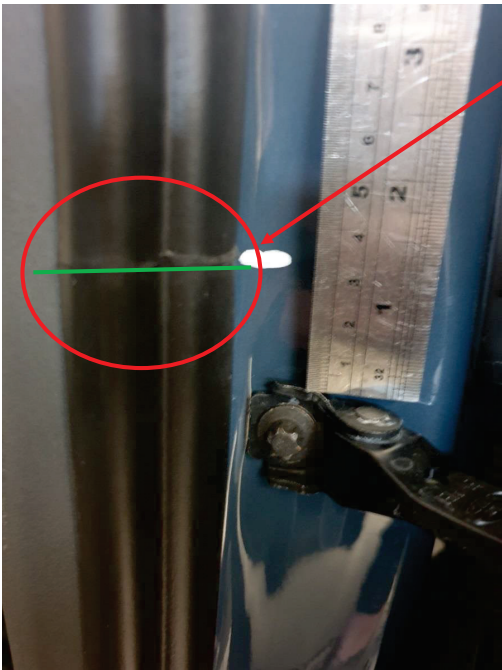


# L663\_110 – Rear door aperture seals kinking

## SEAL I.D & LOCATION MARKS



Secondary door seal manufacturing joint line  
location and identification line to door closure 3.5cm from top of the door check strap



**Remove for access:** C-Pillar upper [1]; C-Pillar lower[2]; Treadplate[3]; B-Pillar Lower [4] and B-Pillar upper [5]



# L663\_110 – Rear door aperture seals kinking CREASED-KINKED AREA



Once seal is removed lay out flat surface and identify the creased kinked area



# L663\_110 – Rear door aperture seals kinking

## RE-WORK TO THE DOOR SEAL



Before refitting and positioning the secondary door seal press the seal seating area together the full circumference of the seal to aid installation re-fitment.



# L663\_110 – Rear door aperture seals kinking

## RE-WORK TO THE DOOR SEAL



\*\*On refitting the seal to the door aperture re position the secondary door seal by 10cm from the original start position as per slide 4

This will straighten out the crease-kinked area for LH Door clockwise & RH Door anti-clock.

Left hand rear door  
Move the seal down Anti clock by 10cm



## Fitting Care Points



Step 1: **Process change:** Start fitting at C-post upper; continue to B-post – follow fitting stream - picture attached

Step 2: As per fitting diagram

Step 3: In C-post & B-post upper corners, fully rotate seal inboard – checking for kinks

*OBS: If kink present, re-work seal immediately by pulling the seal around the corner and continue to rotate inboard.*

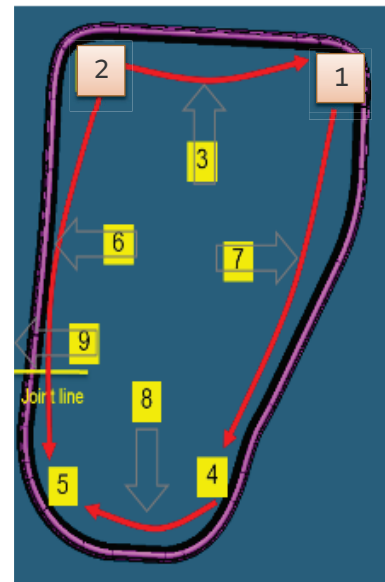


1. Rotating seal inboard-OK

1. Rotating seal outboard-NOK

## Step 2

Rear doors





# L663\_110 – Rear door aperture seals kinking POST RE-WORK CONDITION



Previously creased area

