

ATTENTION:

- GENERAL MANAGER
- PARTS MANAGER
- CLAIMS PERSONNEL
- SERVICE MANAGER

IMPORTANT - All Service Personnel Should Read and Initial in the boxes provided, right.

© 2015 Subaru of America, Inc. All rights reserved.



QUALITY DRIVEN® SERVICE

SERVICE BULLETIN

APPLICABILITY: All 2011MY+ Vehicles with FA or FB Engines **NUMBER:** 02-161-15R
SUBJECT: New Installation Procedure for Front Crankshaft Oil Seal **DATE:** 04/16/15
REVISED: 08/04/20

INTRODUCTION:

This bulletin announces a revised replacement procedure for installation of the front crankshaft oil seal.

PART INFORMATION:

- **806750080** (OIL SEAL 50X62X7) Front Crankshaft Oil Seal
- **806939060** (O-RING) O-Ring for Crankshaft Extension

COUNTERMEASURE IN PRODUCTION:

This new installation procedure was incorporated into production on SIA-built vehicles during early December, 2014 starting with the following:

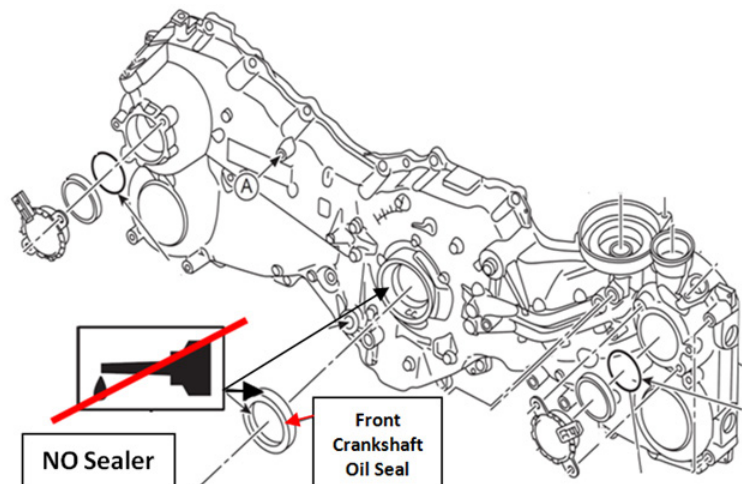
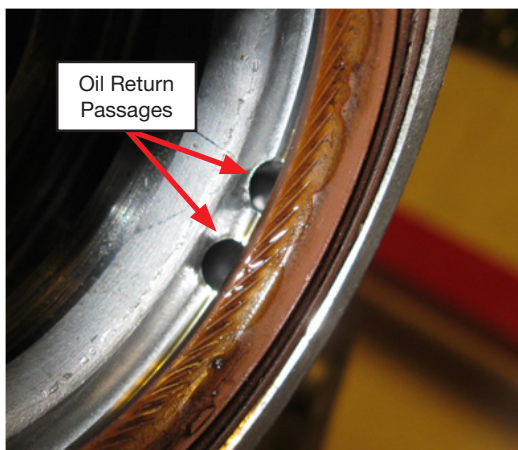
- **LEGACY:** F*038350
- **OUTBACK:** F*272496

NOTE: FHI-built engines did not utilize oil on the outside of the seal during engine assembly.

SERVICE PROCEDURE / INFORMATION:

Follow the procedure supplied in the applicable Service Manual for accessing and removing the front crankshaft oil seal. To enhance retention of the oil seal and to eliminate any chance of blocking the oil return passages in the timing chain cover, make sure the seal bore in the cover is clean, dry and free of any fluids or contamination.

IMPORTANT: Do not apply any oil or sealer to the outside or inside of the seal or seal bore in the timing cover before installation.



Continued...

CAUTION: VEHICLE SERVICING PERFORMED BY UNTRAINED PERSONS COULD RESULT IN SERIOUS INJURY TO THOSE PERSONS OR TO OTHERS.

Subaru Service Bulletins are intended for use by professional technicians ONLY. They are written to inform those technicians of conditions that may occur in some vehicles, or to provide information that could assist in the proper servicing of the vehicle. Properly trained technicians have the equipment, tools, safety instructions, and know-how to do the job correctly and safely. If a condition is described, DO NOT assume that this Service Bulletin applies to your vehicle, or that your vehicle will have that condition.

SUBARU OF AMERICA, INC. IS ISO 14001 COMPLIANT

ISO 14001 is the international standard for excellence in Environmental Management Systems. Please recycle or dispose of automotive products in a manner that is friendly to our environment and in accordance with all local, state and federal laws and regulations.

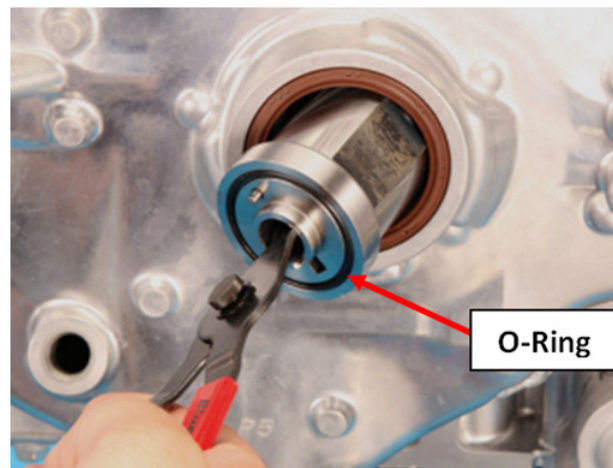
When installing the seal into the timing cover, the proper seal installer must be used: S/T# J-51973.

NOTE: J-51973 replaces the SSTs called for in the service manual (41399FG020 and 398437700).



S/T# J-51973

REMINDER: Whenever removing the crankshaft extension, the o-ring on the extension must always be replaced during reassembly as it is a **one-time use** part.



CAREFULLY tap the new oil seal into position flush with the face of the timing cover as shown in the photo below using a plastic hammer and the specified installation tool.

TIP: Use a piece of cardboard against the radiator cooling fins as extra protection against damage from the hammer.



Continued...

WARRANTY / CLAIM INFORMATION

For vehicles within the Basic New Car Limited and / or Powertrain Warranty period, or covered by a Subaru Added Security (SAS) Powertrain, Classic or Gold plan, this repair may be claimed using the following information:

LABOR DESCRIPTION	LABOR OPERATION #	FAIL CODE	LABOR TIME
Front Crankshaft Oil Seal R&R	B241-116	AAL-34	0.4
Engine Oil Leak Testing	C245-001		0.4

IMPORTANT REMINDERS:

- SOA strongly discourages the printing and/or local storage of service information as previously released information and electronic publications may be updated at any time.
- Always check for any open recalls or campaigns anytime a vehicle is in for servicing.
- Always refer to STIS for the latest service information before performing any repairs.