



## Service Bulletin

**02-158**

### Section

02 - Cab Exterior

### Description

Flush Mount Battery Box Washer Wear

### Release Date

8/25/2020

### Introduction

Peterbilt has determined that certain model 348, 365, 367, 382, 384, 386, 388, 389, 567, 579, and 587 trucks, built between 4/13/2010 and 3/16/2020 and equipped with a flush mounted battery box, utilized rubber washers that could rub through and cause the aluminum box mounting tabs to rub directly on the steel frame brackets. This could result in cracked battery box mounting angles.

### Resolution

#### Fix As Fail

If a customer comes into your dealership and demonstrates the condition above, use the procedure below to add the reinforcement bracket(s).

### Warranty

Through Standard Warranty, Peterbilt will pay for parts at dealer net plus applicable mark-up and labor:

- 0.6 hours of labor to install battery box reinforcement bracket(s). File a long form claim.
- File an additional claim for extraordinary circumstances, referencing 02-158 in the CCC.

For Field...	Enter...
Failure Location	014-005-004
Failure Type	450
Claim Type	N
	SRT 014-168 0.6 <a href="#">hours</a> to raise the battery box and

Labor	install reinforcement brackets. This includes up to 2 reinforcement installations as needed.
-------	--

**Take off parts disposition: Destroy parts 30 days after the claim has been paid.**

## **Parts**

Parts are available from PACCAR Parts.

Quantity	Part Number	Description
1 or 2 as needed	N77-6079	Battery box reinforcement bracket
4*	W34-1159-050	M12 Hex Bolt
8*	W34-1162-012	Washer
4*	HWC12514	Locknut

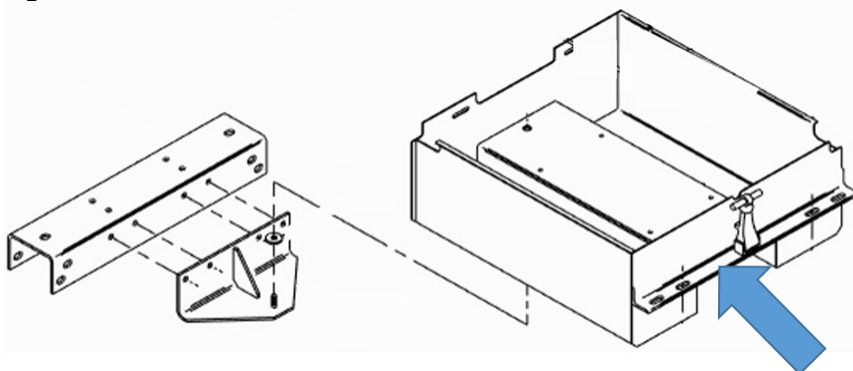
\* Additional hardware may be required to secure the reinforcement bracket if the corner(s) of the battery box are damaged. See Figure 3 in the Procedure section.

## **Procedure**

Please follow your dealership's safety procedures and precautions to ensure the vehicle can be safely repaired and maintained.

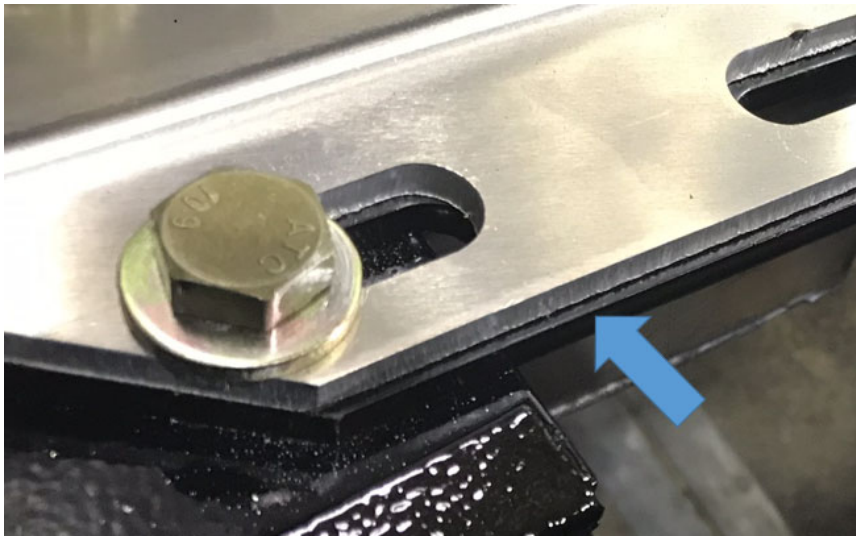
1. Determine how many reinforcement brackets are required based on the box type. Each mounting angle requires a reinforcement bracket. The example shown in Figure 1 has only one mounting angle.

**Figure 1**



2. Remove the lid and disconnect the negative battery cable coming from the chassis. If there is not enough slack to lift the box, additional cables may need to be disconnected.
3. Remove the bolts that attach the box to the frame brackets. The hardware will not be reused.
4. Carefully lift the box approximately 1 inch above the frame brackets. A hoist or a jack with blocks may be used.
5. Place the reinforcement bracket(s) between the box mounting angle(s) and the frame-mounted brackets as shown in Figure 2.

**Figure 2**



6. Lower the box into position, install the new hardware and secure the box.

- Additional hardware may be required to secure the reinforcement bracket(s) if the battery box angles are damaged, as shown in Figure 3. The damaged corner has been removed in the image.

**Figure 3**



7. Reconnect any cables and harnesses from the chassis and install the lid.

---

Authored by: PR

---

Access to PACCAR's Enterprise Portal is provided as a benefit of doing business with PACCAR. All applications and content accessed through this system are confidential and proprietary and the property of PACCAR Inc and its suppliers, and must be kept strictly confidential pursuant to the contract licensing such access. Disclosure, publication, release or distribution of any material found on PACCAR systems to any person other than employees with a need to know such information is strictly prohibited. All activity on this system is monitored. If PACCAR suspects or discovers any unauthorized activity, access may be immediately terminated without prior notification. Violators may be subject to legal action.

© Copyright 2020 PACCAR Inc. All rights reserved. We welcome your [feedback](#) on this page. For technical questions or concerns about this page, please contact the [DealerNet Webmaster](#).