



## INSTRUCTION TO SERVICE

<b>ITS: 58932</b>	
<b>SECTION:</b>	290 ELECTRICAL SCHEMATICS
<b>WRITTEN BY:</b>	Curtis Matthews
<b>SUBJECT:</b>	Reprogramming the CM0711 Gateway

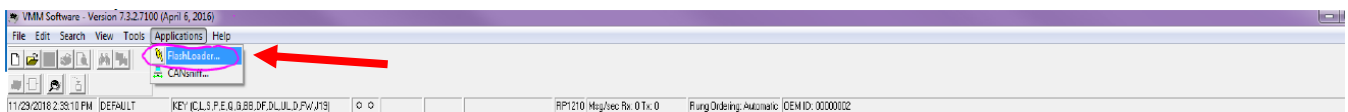
# ITS58932

THIS DOCUMENT AND THE CONTENTS DISCUSSED HEREIN ARE THE CONFIDENTIAL AND PROPRIETARY INFORMATION OF NEW FLYER INDUSTRIES CANADA ULC AND NEW FLYER OF AMERICA INC. AND ARE DISCLOSED BY NEW FLYER IN CONFIDENCE. THIS DOCUMENT AND THE CONTENTS HEREIN ARE NOT TO BE DISCLOSED BY THE INTENDED RECIPIENT WITHOUT THE PRIOR WRITTEN AUTHORIZATION OF NEW FLYER. ANY UNAUTHOIZED DISCLOSURE, REPRODUCTION OR OTHER DISTRIBUTION OF THIS DOCUMENT OR INFORMATION IS STRICTLY PROHIBITED AND MAY RESULT IN ACTION BEING TAKEN AGAINST THE PARTY MAKING THE UNAUTHORIZED DISCLOSURE. THIS DOCUMENT AND ALL COPIES HEREOF MUST BE RETURNED TO NEW FLYER UPON REQUEST.

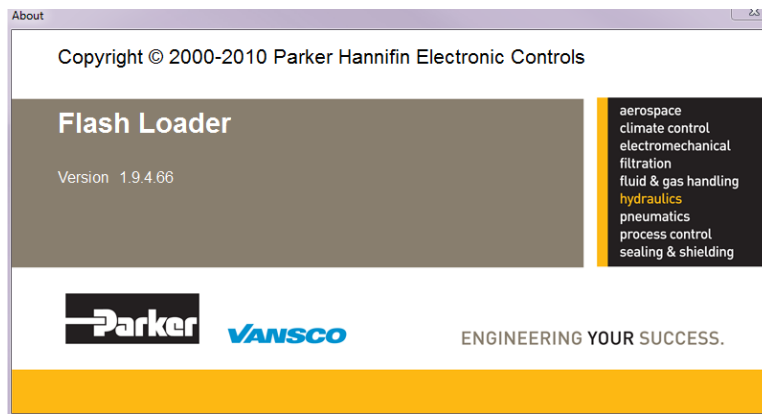
**PROCEDURE:**

**⚠ WARNING:** Please follow all instructions carefully. Do not skip steps or take shortcuts as it can result in bricking the CM0711. If the CM0711 is bricked, the bus will become undrivable. If this happens, please ship the bricked CM0711 back to New Flyer New Product Development (NPD).

1. Ensure VMM 7100 or later is installed because it should have Flash Loader v1.9 or newer on it.
  - a. To open flash loader open the VMM software and click Applications → click FlashLoader. See figure 1.
  - b. To check the version is v1.9 or later, click Help → click About. See figure 2.



**Figure 1: FlashLoader location**



**Figure 2: Flashloader version**

2. Make sure the bus is NOT in EV MODE. Turn the bus to Day Run or Night Run with EV MODE OFF.
3. Turn hazard lights on, to assure the bus is awake while programming the CM0711.
4. Connect a NEXIQ USB LINK to the 9-pin Vehicle Diagnostic Port behind the driver and USB cable to laptop.

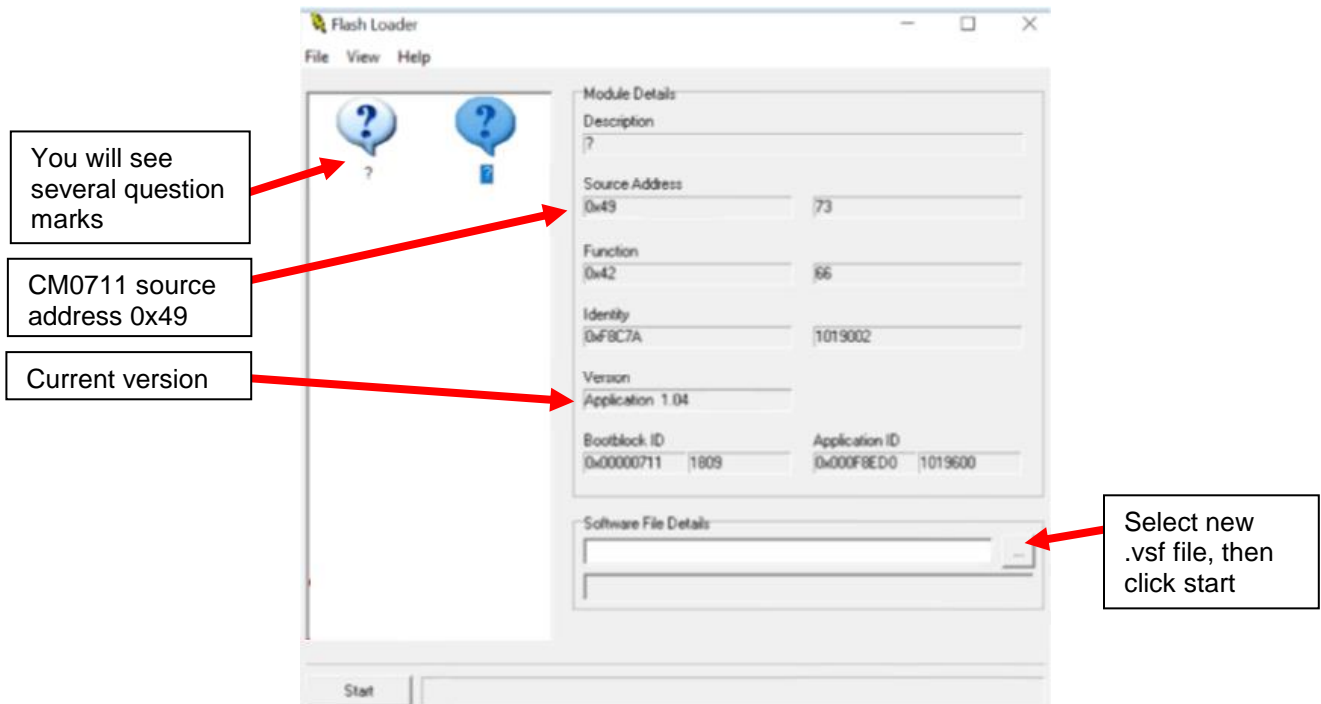
**👉 NOTE:** Make sure the NEXIQ USB LINK is a wired connection (NOT Bluetooth).

5. With the NEXIQ connected, in FlashLoader go to File → RP1210 Settings and make sure NEXIQ USB LINK J1939 Channel 1 is selected. Check this if you are having trouble getting connected.



## NEW FLYER

6. You will see several question marks and other devices on the left-hand side, find source address 0x49, this is the CM0711 (see figure 3).
  - a. The version shows what is currently loaded in the CM0711. Take a screenshot of what is currently loaded.
  - b. Select the new 1019607\_NFIL\_Electric\_Bus\_V5.00.vsf file you received and click start (It will take 1-2 minutes to download the program).



**Figure 3: CM0711 source address and current version**

7. After downloading finishes, follow the same process in step 5 and find source address 0x49. The Version # should now be updated to the program you just loaded. The following example in figure 4 is for loading 1019607\_NFIL\_Electric\_Bus\_V5.00.vsf. It is also important to notice that it is V5.00 Build 0.

Updated application:  
 version V5.00  
 Build 0

Module Details	
Description	?
Source Address	0x49 73
Function	0x42 66
ECU Instance	0x00 0
Identity	0xF8C7A 1019002
Version	Application 5.00
Parameter	Value
Boot Block Part Number	1809
Boot Block Version	V3.03 Build 5
Application Part Number	1019607
Application Version	V5.00 Build 0
Platform Software Part Number	1809
Platform Software Version	V2.15 Build 20

**Figure 4: CM0711 source address and updated version**

8. Turn the master-run switch OFF for at least 20 seconds. It takes at least 7 seconds for the CM0711 to power off after turning off the master-run switch, but 20 seconds is recommended to be safe.
9. Put the bus back into Day Run (not EV mode).
10. Open the rear panel and make sure the light on the CM0711 is flashing green and then orange. This indicates the CM0711 is operating.

**NOTE:** If the CM0711 light is off or steady red, it is bricked and will need to be sent back to NPD. Unfortunately, the bus will be undrivable without a function CM0711 so please contact NPD as soon as possible.



**Figure 5: Rear panel and CM0711 module location**

11. Make sure the bus can enter EV mode by cycling EV mode “ON” then “OFF”.
12. Download updated PLC program to Vansco.
13. Remove all tools and debris and return the bus to service condition.



**NEW FLYER**

### LABOUR ESTIMATE

	Operation	Men	Hours	Labour Time M X HR
1	Reprogramming the CM0711 Gateway	1	0.5	0.5

### SPECIAL TOOLS REQUIRED

Item	Part Number	Description	Qty. per RPSM	Units	Notes
1	6353474	NEXIQ USB Link	1	EA	(Not Bluetooth)