



INSTRUCTION TO SERVICE

ITS: 58835	
SECTION:	290 Electrical Schematics
WRITTEN BY:	Brandt Melville
SUBJECT:	VMM Program Download

ITS-58835

THIS ITS DOCUMENT SHOULD BE RETAINED AND REFERED TO FOR FUTURE MAINTENANCE UNTIL THE NEW FLYER PARTS AND/OR SERVICE MANUAL IS UPDATED TO REFLECT WORK DONE AS A RESULT OF THIS DOCUMENT. ENSURE THAT THIS DOCUMENT IS AVAILABLE FOR PARTS AND MAINTENANCE STAFF GOING FORWARD.

THIS DOCUMENT AND THE CONTENTS DISCUSSED HEREIN ARE THE CONFIDENTIAL AND PROPRIETARY INFORMATION OF NEW FLYER INDUSTRIES CANADA ULC AND NEW FLYER OF AMERICA INC. AND ARE DISCLOSED BY NEW FLYER IN CONFIDENCE. THIS DOCUMENT AND THE CONTENTS HEREIN ARE NOT TO BE DISCLOSED BY THE INTENDED RECIPIENT WITHOUT THE PRIOR WRITTEN AUTHORIZATION OF NEW FLYER. ANY UNAUTHOIZED DISCLOSURE, REPRODUCTION OR OTHER DISTRIBUTION OF THIS DOCUMENT OR INFORMATION IS STRICTLY PROHIBITED AND MAY RESULT IN ACTION BEING TAKEN AGAINST THE PARTY MAKING THE UNAUTHORIZED DISCLOSURE. THIS DOCUMENT AND ALL COPIES HEREOF MUST BE RETURNED TO NEW FLYER UPON REQUEST.

PROCEDURE FOR VMM PROGRAM DOWNLOAD:

1. Ensure the Master Run Switch is in the off position with the park brake applied and the bus batteries fully charged.
2. Ensure laptop battery is fully charged or plugged into a power source.
3. Turn on the hazard lights.
4. Connect a laptop with VMM software to the under-dash USB B connector located below the right side of the dash, above the pedals.
5. Open the revised PLC program in the VMM software.
6. Select Tools and Query VMMs. Refer to Figure 1.

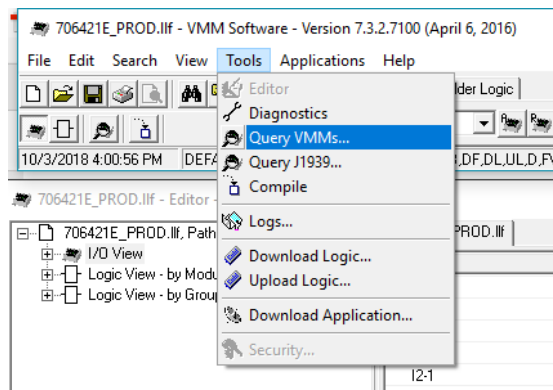


Figure 1: VMM Query

7. Ensure you are communicating with all the nodes in the query screen prior to downloading.
8. Select Download Logic.
9. Ensure the file path seen in Figure 2 below reflects the same file path as where you saved the VMM file. Ensure the correct file name and revision appear at the end of the file path. Contact your RPSM for the latest VMM program revision.

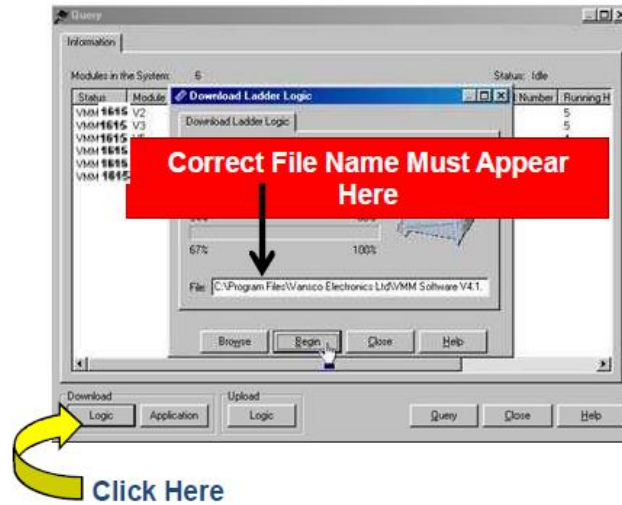


Figure 2: Downloading Logic File

10. The software will verify the correct number of VMMs are found. Do not download program if all VMMs are not located. If the correct number of VMMs were found, select Yes.

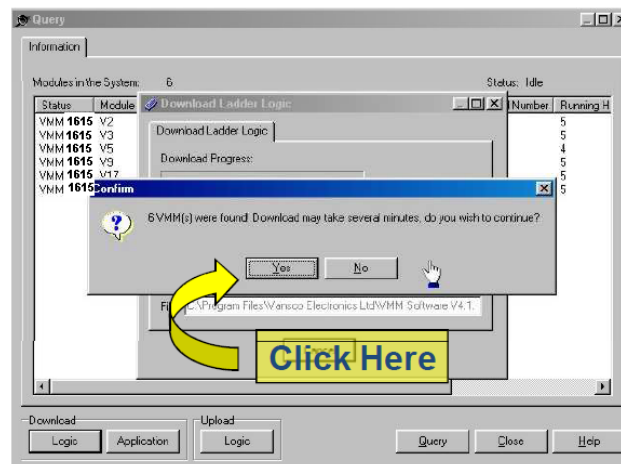


Figure 3: Correct Number of VMM Check

11. After the download is complete, close the download window and disconnect your laptop from the bus.



LABOUR ESTIMATE				
	Operation	Men	Hours	Labour Time M X HR
1	Programming	1	0.25	0.25

SPECIAL TOOLS REQUIRED					
Item	Part Number	Description	Qty. per Coach	Units	Notes
1		Laptop with VMM Software	1	EA	