



GROUP
FUE

MODEL
2021MY
K5 (DL3a)

NUMBER
048

DATE
August 2020

TECHNICAL SERVICE BULLETIN

**SUBJECT: SERVICE ACTION: LOW PRESSURE FUEL LINE ROUTING
INSPECTION AND/OR ADJUSTMENT (SA432)**

This bulletin provides information to inspect and if necessary, adjust the low pressure fuel line routing on some 2021MY K5 (DL3a) vehicles with GAMMA 1.6L T-GDI engine, produced from March 27, 2020 through July 23, 2020 which may NOT have been properly routed during assembly. The incorrectly routed fuel line may cause a Malfunction Indicator Lamp (MIL) with DTC P0087 and the vehicle may exhibit poor acceleration and/or hesitation during low speed operation. Kia is requesting the completion of this service action on all affected vehicles, including dealer stock, prior to delivery. Before conducting the procedure, verify the vehicle is included in the list of affected VINs.



* NOTICE

A Service Action is a repair program without customer notification that is performed during the warranty period. Any dealer requesting to perform this repair outside the warranty period will require DPSM approval.

Repair status for a VIN is provided on WebDCS (Service → Warranty Coverage → Warranty Coverage Inquiry → Campaign Information). Not completed Recall / Service Action reports are available on WebDCS (Consumer Affairs → Not Completed Recall → Recall VIN → Select Report), which includes a list of affected vehicles.

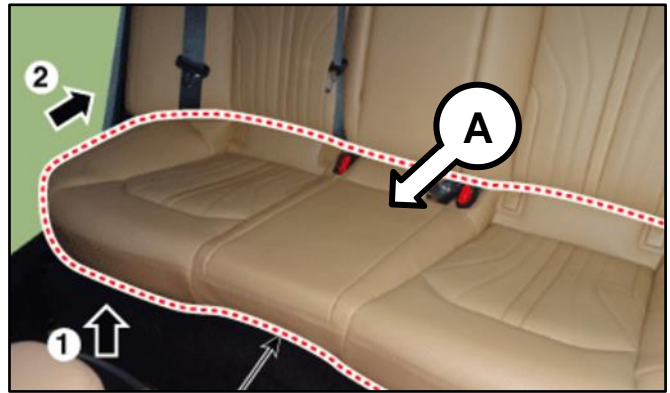
This issue number is SA432.

Printed TSB copy is for reference only; information may be updated at any time.
Always refer to KGIS for the latest information.

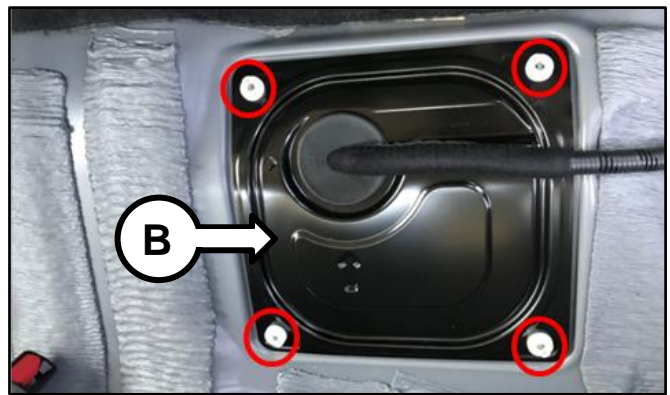
Circulate To: General Manager Service Manager Parts Manager
 Service Advisors Technicians Body Shop Manager Fleet Repair

Inspection Procedure:

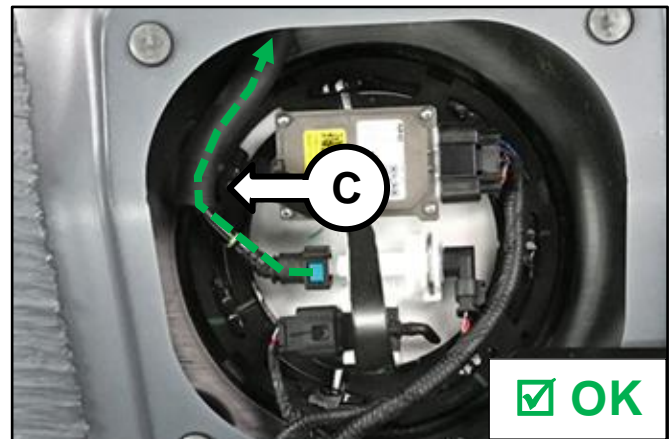
1. Remove the rear seat cushion assembly (A) by referring to the “Body (Interior and Exterior) → Rear Seat → Rear Seat Assembly → Repair procedures” chapter in the applicable Shop Manual on KGIS.



2. Remove the fuel pump service cover (B).

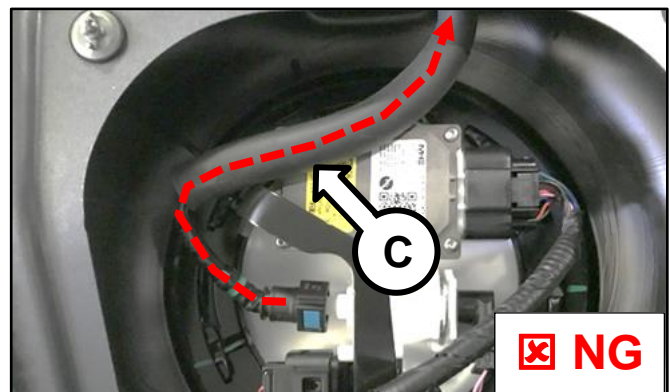


- 3a. Locate the low pressure fuel line (C) coming from the fuel pump module. The fuel line should be routed alongside the fuel pump module retaining ring and NOT crossed over the Fuel Pump Control Module (FPCM), towards the front of the vehicle.



Fuel line is routed properly (OK).

Fuel line is not routed properly No Good (NG).



SUBJECT:

SERVICE ACTION: LOW PRESSURE FUEL LINE ROUTING INSPECTION AND/OR ADJUSTMENT (SA432)

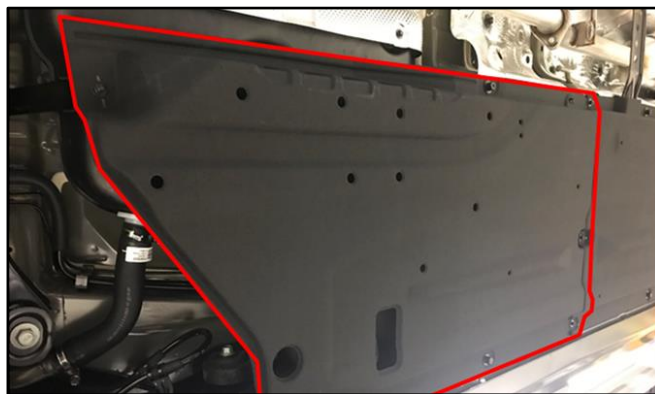
3b. Inspect the low pressure fuel line for kink(s) between the fuel tank and the floor pan.

- If the fuel line is not routed properly and/or a kink is found, (NG), then proceed to the 'Repair Procedure' outlined below to correct the routing of the fuel line.
- If the fuel line is routed properly and no kink is present, (OK), then this service action is complete.

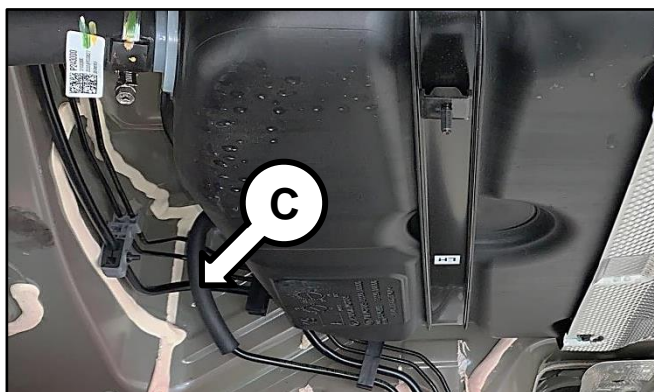


Repair Procedure:

1. Lift vehicle on hoist and remove the left rear lower cover.



2. Locate the low pressure fuel line (C).

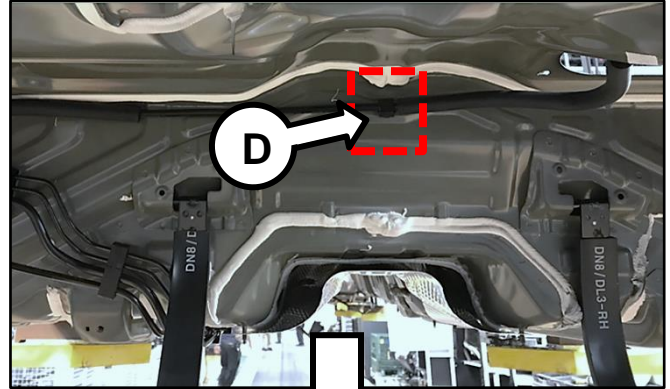


SUBJECT:

SERVICE ACTION: LOW PRESSURE FUEL LINE ROUTING INSPECTION AND/OR ADJUSTMENT (SA432)

- 3a. Locate the low pressure fuel line center retaining clip (D) shown. The clip will be used as a reference point for adjusting the fuel line.

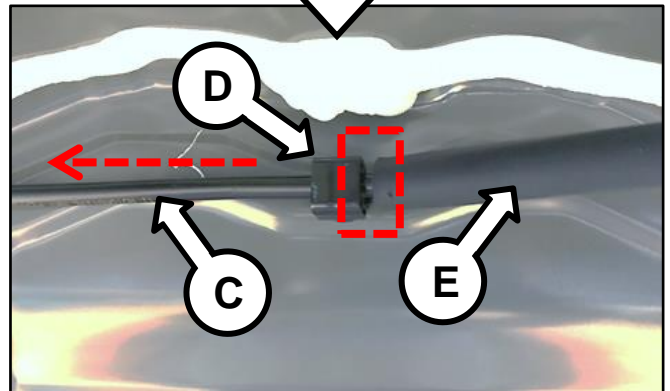
Note: The image is for reference use only, the fuel tank does **NOT** need to be removed.



- 3b. Adjust the low pressure fuel line (C) by carefully pulling the fuel line towards the left. The insulator (E) should be almost touching the center retaining clip (D).

★ NOTICE

When adjusting, be careful not to cause damage to the low pressure fuel line.



- 3c. Review the 'Inspection Procedure' steps 3a/3b and confirm the following:
1. The low pressure fuel line is routed towards the front of the vehicle.
 2. No kink is present.
4. Reinstall the removed parts in the reverse order of removal.
5. Confirm normal vehicle operation.

SUBJECT:

SERVICE ACTION: LOW PRESSURE FUEL LINE ROUTING INSPECTION AND/OR ADJUSTMENT (SA432)

AFFECTED VEHICLE RANGE:

Model	Production Date Range
K5 (DL3A)	March 27, 2020 to July 23, 2020

WARRANTY INFORMATION:

N Code: N99 C Code: C99

Claim Type	Causal P/N	Qty.	Repair Description	Labor Op Code	Op Time	Replacement P/N	Qty.
V	31310 L3500	0	(SA432) Low Pressure Fuel Line Inspection	200A05I0	0.3 M/H	N/A	0
			(SA432) Low Pressure Fuel Line Inspection and Adjustment	200A05R0	0.4 M/H		

* NOTICE

VIN inquiry data for this repair is provided for tracking purposes only. Kia retailers should reference SA432 when accessing the WebDCS system.

