

Spare Parts Requirements for Mirror Support (Mirror Attachment Point Finisher) - Observe Additional Measure Required Before Installation (99/20)

Vehicle Type: **911 Carrera (997)
Boxster (987)
Cayman (987)**

Model Year: **As of 2005 up to 2013**

Subject: **Mirror support (mirror attachment point finisher)**

Information: **To resolve parts backlogs and supply bottlenecks of the mirror supports, new mirror supports were procured without first performing leak tests on the electric plug contact. To ensure that the electric plug contact on the mirror support remains sealed over the service life of the vehicle, the electric plug contact on the mirror support must also be sealed before installing the new mirror support.**

Remedial Action: Before installing the new mirror support, remove the electric plug contact on the mirror support and seal it with sealant.

Parts Info: **Affected part numbers on which the procedure described here must be carried out before installation:**

Part No.	Designation
99773121916G2L	⇒ Mirror base, prime-coated - left
99773121917G2L	⇒ Mirror base, prime-coated - left
99773121918G2L	⇒ Mirror base, prime-coated - left
99773121919G2L	⇒ Mirror base, prime-coated - left
99773121920G2L	⇒ Mirror base, prime-coated - left
99773121921G2L	⇒ Mirror base, prime-coated - left
99773121922G2L	⇒ Mirror base, prime-coated - left
99773121923G2L	⇒ Mirror base, prime-coated - left
99773122016G2L	⇒ Mirror base, prime-coated - right
99773122017G2L	⇒ Mirror base, prime-coated - right
99773122018G2L	⇒ Mirror base, prime-coated - right
99773122019G2L	⇒ Mirror base, prime-coated - right
99773122020G2L	⇒ Mirror base, prime-coated - right
99773122021G2L	⇒ Mirror base, prime-coated - right

99773122022G2L	⇒ Mirror base, prime-coated - right
99773122023G2L	⇒ Mirror base, prime-coated - right

Required materials

Materials: **Required materials** (usually already available at the Porsche dealership):

Part No.	Designation	Qty.
00004330532	⇒ Sealant (Teroson)	600g (21 oz) container*

* approx. 10 g (0.35 oz) required per vehicle

Required tools

- Tools:
- Torque wrench, 2–10 Nm (1.5–7.5 ftlb.), e.g. **VAG 1783 Torque wrench, 2-10 Nm (1.5-7.5 ftlb.)**
 - Cartridge gun, e.g. **VAG 1628 Hand-cartridge gun**

Sealing connector housing on mirror support

Work Procedure: 1 Loosen and remove screws on the electric plug contact ⇒ *Screws on mirror support -1-* on the mirror support.



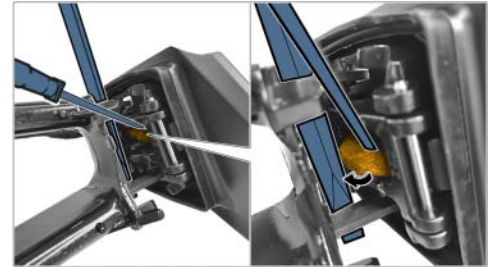
Screws on mirror support

- 2 Fold the mirror support folding mechanism forward in direction of travel and block it using a suitable object (e.g. a screwdriver) to prevent it from folding back to its original position.



Mirror support

- Remove electric wire harness for the mirror support from its guide using a screwdriver.



Wire harness guide in mirror support

- Pull plug contact with wire harness approx. 100 mm out of the mirror bracket.



Wire harness for mirror support

- Coat the back of the connector housing with sealant (Teroson), Part No. 00004330532, all the way around. Make sure to apply the sealant as far as the outer edge of the connector housing all the way around.



Information

Leave the sealant to dry for at least 1 hour before starting assembly.



Outer plug contact

- Install plug contact, install screws ⇒ *Screws on mirror support -1-* and tighten to **Tightening torque 3 Nm (2ftlb.)** .



Screws on mirror support

- Route electric wire harness correctly on the mirror support again. When doing so, make sure that it is routed correctly in the guide and the folding mechanism of the mirror support is not blocked or the wire harness damaged.



Wire harness routing for mirror support

- Fold the mirror support folding mechanism forward in direction of travel and remove the object used to secure it.



Mirror support

Invoicing

Invoicing: For documentation and warranty invoicing, enter the labor operations, PQIS coding and part numbers specified below in the warranty claim:

APOS	Labor operation	I No.
66934950	Reworking mirror support	

PQIS coding:

Location (FES5)	66930	Mirror support
Damage type (SA4)	2700	Electr. threaded connection, nut/bolt/screw loose

Parts Info: Required materials:

Part No.	Designation	Qty.
00004330532	Teroson	0.1 ea.*
* Only for warranty processing, i.e. approx. 60 g (2.1 oz)		

Important Notice: Technical Bulletins issued by Porsche Cars North America, Inc. are intended only for use by professional automotive technicians who have attended Porsche service training courses. They are written to inform those technicians of conditions that may occur on some Porsche vehicles, or to provide information that could assist in the proper servicing of a vehicle. Porsche special tools may be necessary in order to perform certain operations identified in these bulletins. Use of tools and procedures other than those Porsche recommends in these bulletins may be detrimental to the safe operation of your vehicle, and may endanger the people working on it. Properly trained Porsche technicians have the equipment, tools, safety instructions, and know-how to do the job properly and safely. Part numbers listed in these bulletins are for reference only. The work procedures updated electronically in the Porsche PIWIS diagnostic and testing device take precedence and, in the event of a discrepancy, the work procedures in the PIWIS Tester are the ones that must be followed.

© 2020 Porsche Cars North America, Inc.