

FLA COE  
FLB COE  
FLD Conventional  
Business Class  
FLC 112 Conventional

Century Class Conventional  
Argosy COE  
Cargo  
Columbia  
122SD and Coronado

> Business Class M2  
Cascadia  
> 108SD/114SD  
New Cascadia

**Freightliner  
Service Bulletin**

**Description of Revisions:** *This bulletin replaces the version dated 10/31/2019. The build date section has been added.*

## Vehicles Build Dates

This bulletin applies to vehicles conforming to EPA10 or newer emission standards manufactured through November 17, 2019.

The factory began installing the powertrain power distribution module (PTPDM) support bracket on the front wall of vehicles manufactured from November 18, 2019 to the present.

## General Information

Powertrain Power Distribution Module (PTPDM) protects circuits to the engine, transmission, and exhaust aftertreatment systems. This bulletin provides an alternative PTPDM mounting location that helps to reduce stress and vibrations that can be transmitted to the fuses and relays mounted in the PTPDM. This new bracket helps to reduce the risk of cracked fuses located in the PTPDM.

Follow the procedure below to replace the PTPDM and main PDM bracket.

## Parts

Parts	Description	Qty
A66-16733-000	Bracket, PTPDM FW MTD	1

**Table 1, Parts Required**

## Powertrain PDM and Main PDM Bracket Replacement

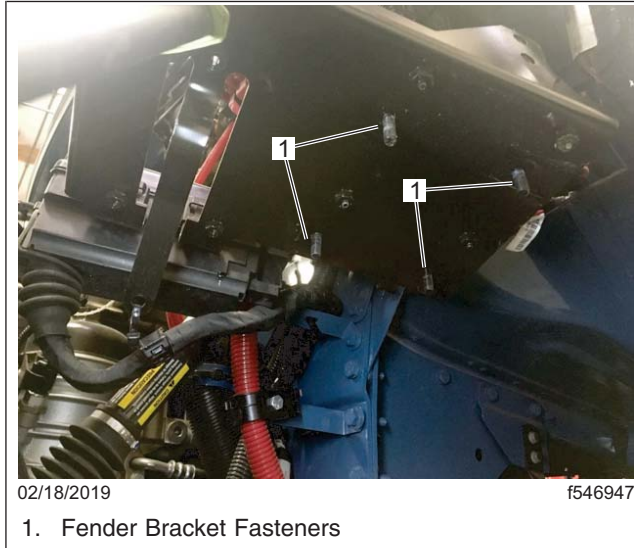
1. Park the vehicle on a level surface, shut down the engine, and set the parking brake. Chock the tires.
2. Disconnect the batteries.
3. Open the hood and remove the fasteners attaching the PTPDM fender bracket to the quarter fender, then remove the left quarter fender. See [Fig. 1](#).

**Freightliner  
Service Bulletin**

FLA COE  
FLB COE  
FLD Conventional  
Business Class  
FLC 112 Conventional

Century Class Conventional  
Argosy COE  
Cargo  
Columbia  
122SD and Coronado

> Business Class M2  
Cascadia  
> 108SD/114SD  
New Cascadia



**Fig. 1, Quarter Fender Fasteners**

4. Remove both the PTPDM and underhood PDM from the bracket.
5. Using a die grinder, cut along the line shown in [Fig. 2](#) to remove the PTPDM mounting tabs.



**Fig. 2, Cutting the Powertrain Power Distribution  
Module (PTPDM) Bracket Mounting Tabs**

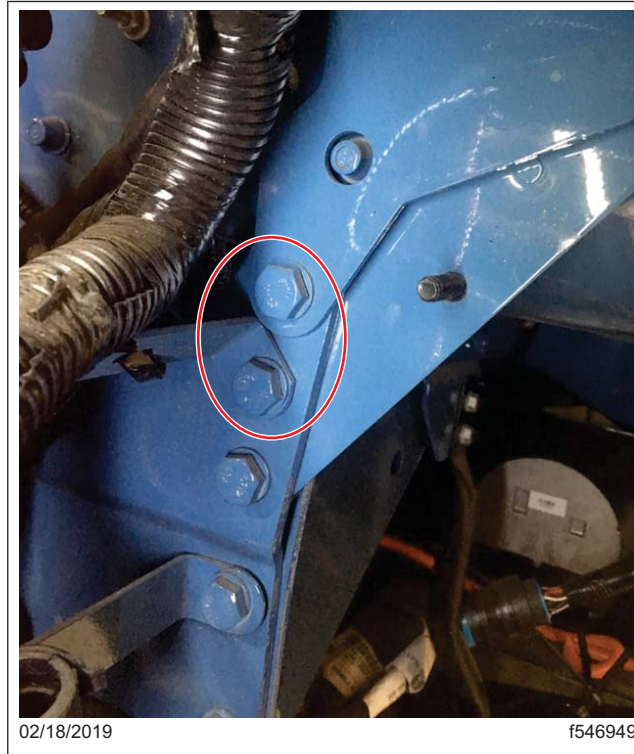
6. Remove the top two cab mount bolts from the cab and harness clipping bracket. See [Fig. 3](#).

FLA COE  
FLB COE  
FLD Conventional  
Business Class  
FLC 112 Conventional

Century Class Conventional  
Argosy COE  
Cargo  
Columbia  
122SD and Coronado

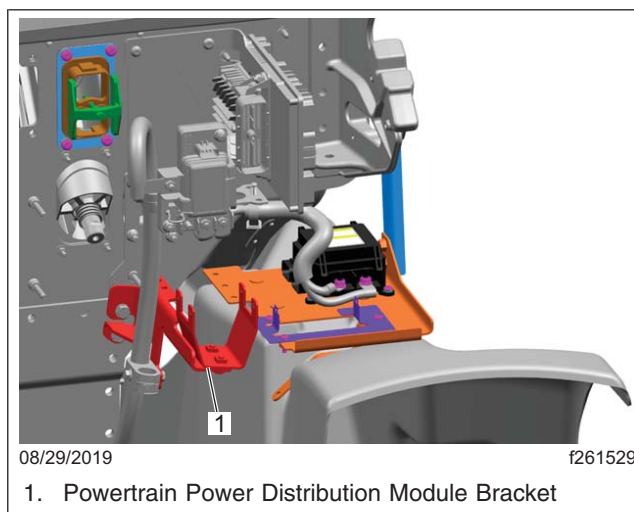
> Business Class M2  
Cascadia  
> 108SD/114SD  
New Cascadia

**Freightliner  
Service Bulletin**



**Fig. 3, Cab Mount Bolts**

7. Attach the PTPDM bracket on the cab using the previously removed bolts. Tighten the bolts 33 lbf·ft (44 N·m). See [Fig. 4](#).



**Fig. 4, New Powertrain Power Distribution Module (PTPDM) Bracket Installation**

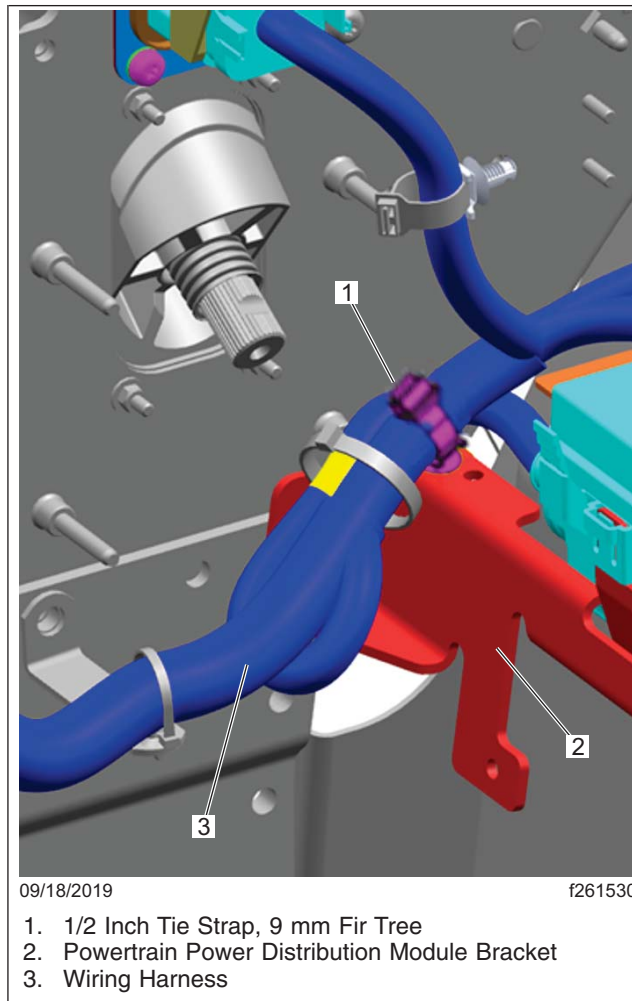
**Freightliner  
Service Bulletin**

FLA COE  
FLB COE  
FLD Conventional  
Business Class  
FLC 112 Conventional

Century Class Conventional  
Argosy COE  
Cargo  
Columbia  
122SD and Coronado

> Business Class M2  
Cascadia  
> 108SD/114SD  
New Cascadia

8. Position the PTPDM wiring harness, as needed, so that it exits the PTPDM housing horizontally, see [Fig. 5](#). Position the rubber grommet back into PTPDM housing.



**Fig. 5, Powertrain Power Distribution Module (PTPDM)  
Wiring Harness**

9. Route the PTPDM harness over the new bracket, and along the existing frontwall harnesses to allow room for mounting the PTPDM on the new frontwall bracket.
10. Install the PTPDM onto the new frontwall bracket, securing the harnesses with zip ties, as needed.
11. Install the underhood PDM onto the quarter fender PDM Bracket.
12. Install the quarter fender onto the cab using the original fasteners, then attach the PDM bracket to the quarter fender. Secure the harnesses with zip ties, as needed. See [Fig. 6](#).

FLA COE  
FLB COE  
FLD Conventional  
Business Class  
FLC 112 Conventional

Century Class Conventional  
Argosy COE  
Cargo  
Columbia  
122SD and Coronado

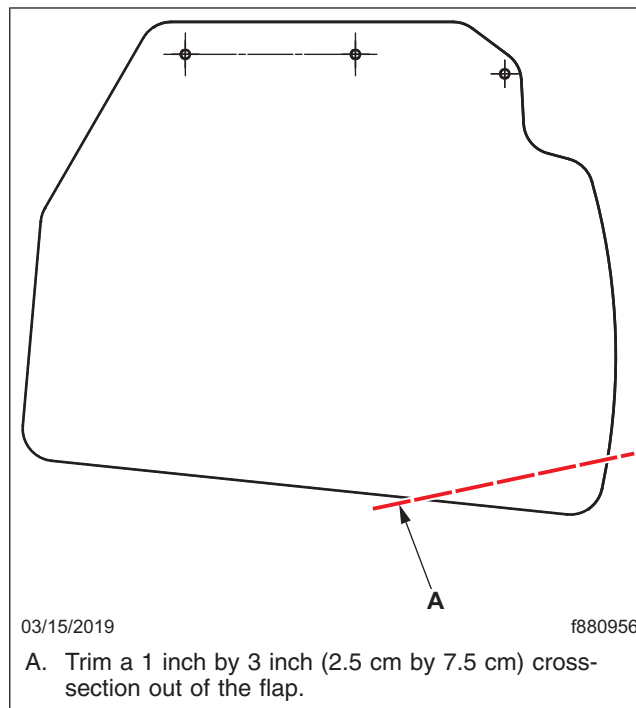
> Business Class M2  
Cascadia  
> 108SD/114SD  
New Cascadia

**Freightliner  
Service Bulletin**



**Fig. 6, Quarter Fender and Powertrain Power Distribution Module (PTPDM) Installed on the Vehicle**

13. Close the hood and check for proper clearance between PTPDM and flap. If there is insufficient clearance, trim a 1 inch by 3 inch (2.5 cm by 7.5 cm) cross-section out of the flap. See [Fig. 7](#).



**Fig. 7, Checking for Clearance**

14. Connect the batteries.

**Freightliner  
Service Bulletin**

 FLA COE  
 FLB COE  
 FLD Conventional  
 Business Class  
 FLC 112 Conventional

 Century Class Conventional  
 Argosy COE  
 Cargo  
 Columbia  
 122SD and Coronado

 > Business Class M2  
 Cascadia  
 > 108SD/114SD  
 New Cascadia

## Warranty

This procedure is warrantable only if the described condition exists and the repair is performed within the applicable base or extended coverage warranty period. If a failure is not found, this procedure is considered preventive and warranty does not apply.

Normal warranty applies. See [Table 2](#) for OWL VMRS codes and labor allowance information.

OWL VMRS Codes and Labor Allowance					
Primary Failed Part	Component Code	Cause Code	SRT Code	Description	Time: Hours
A06-81110-000	034-004-172	03	286-5101A	BRACKET, PT PDM, FRONTWALL MOUNTED, REPLACE	0.8 hrs

**Table 2, OWL VMRS Codes and Labor Allowance**